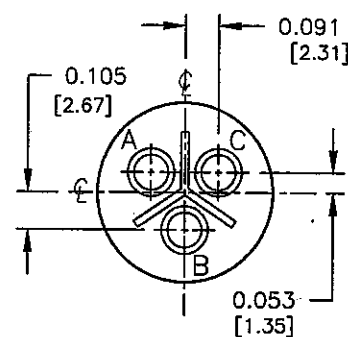
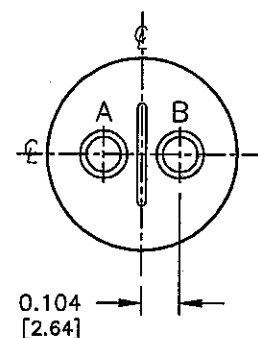


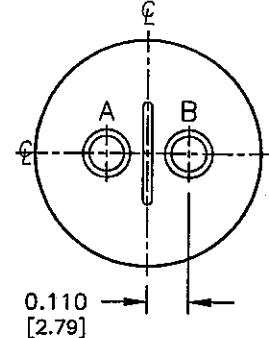
SIZE: 10SL-4
2-#16 CONTACTS



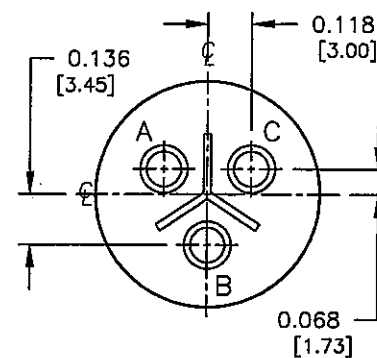
SIZE: 10SL-3
3-#16 CONTACTS



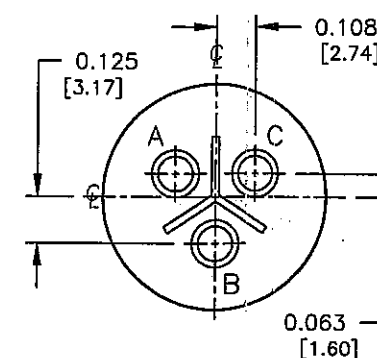
SIZE: 12S-3
2-#16 CONTACTS



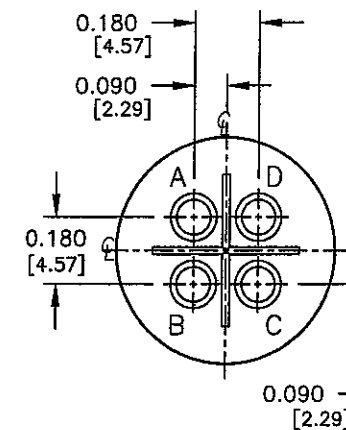
SIZE: 14S-9
2-#16 CONTACTS



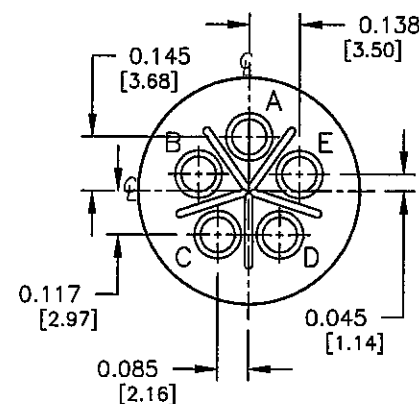
SIZE: 14S-1
3-#16 CONTACTS



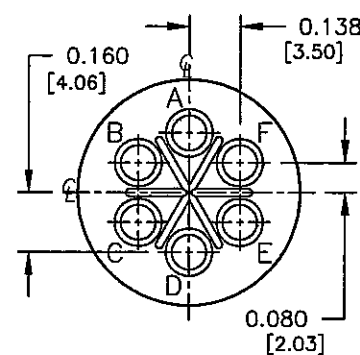
SIZE: 14S-7
3-#16 CONTACTS



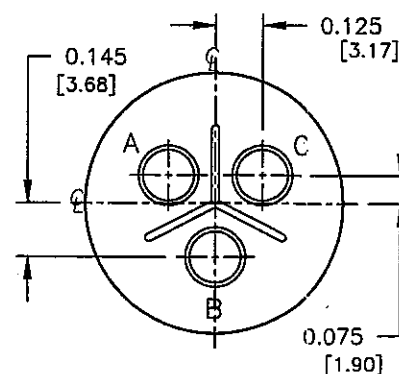
SIZE: 14S-2
4-#16 CONTACTS



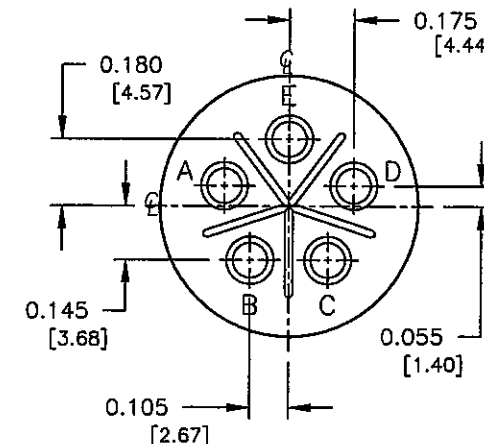
SIZE: 14S-5
5-#16 CONTACTS



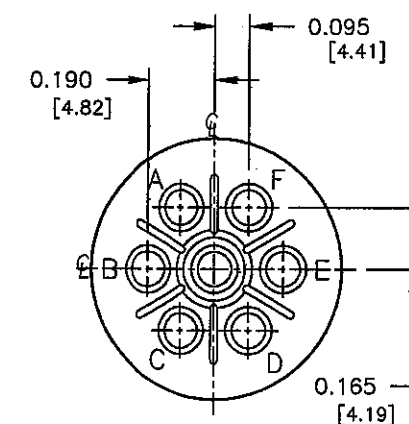
SIZE: 14S-6
6-#16 CONTACTS



SIZE: 16-10
3-#12 CONTACTS



SIZE: 16S-8
5-#16 CONTACTS



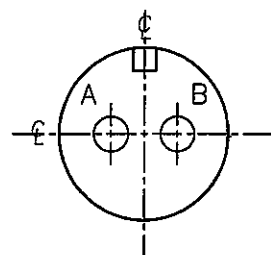
SIZE: 16S-1
7-#16 CONTACTS

WIRE VIEWS
(FOR PIN CONTACTS)

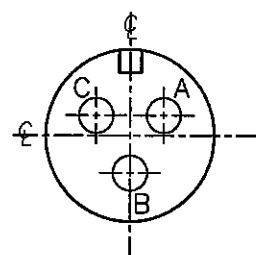
COPY

PART NUMBER: HPMQSTD

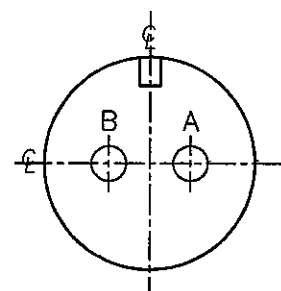
REV. INIT.	DATE	DESCRIPTION
A	11-12-03	CREATED DRAWING PER ECR #2672
ALL INFORMATION ILLUSTRATED IS THE PROPERTY OF CONNELL CORPORATION. UNAUTHORIZED REPRODUCTION OR DISTRIBUTION OF THIS DOCUMENT IS PROHIBITED.		
ALL UNITS ARE IN FEET, INCHES, FRACTION OF INCHES AND DECIMALS.		
UNLESS OTHERWISE SPECIFIED TOLERANCES: 3 PLACE DECIMALS ±.005 ANGLES ±1° FRACTIONS ±1/16		
CRITICAL CHARACTERISTIC FLAG PER SPEC. XXXX		
ORIG. DRAWN BY:	DATE:	
RCS	11-12-03	
CHECKED BY:	DATE:	
<i>John</i>	2/17/05	
APPROVED BY:	DATE:	
<i>John</i>	2/17/05	
SCALE	SIZE	SHEET
NTS	B	1 OF 8
FILE:	DIRECTORY:	PART NUMBER:
HPMQSTDH1	DETAILS	HPMQSTD
TITLE: HOLE PATTERNS MIL-E-QUAL SIZES: 10SL, 12S, 14S, 16 & 16S		REV. A



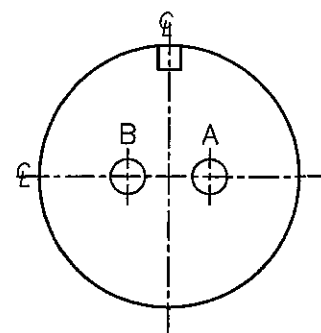
SIZE: 10SL-4
2-#16 CONTACTS



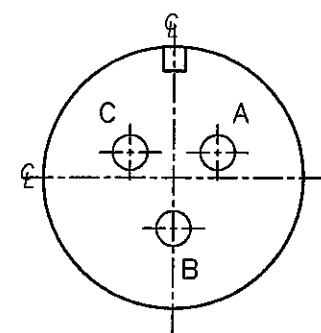
SIZE: 10SL-3
3-#16 CONTACTS



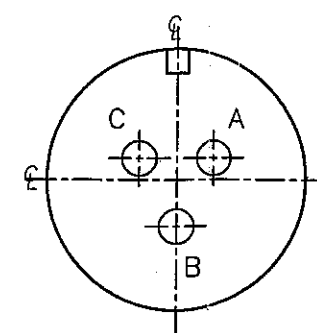
SIZE: 12S-3
2-#16 CONTACTS



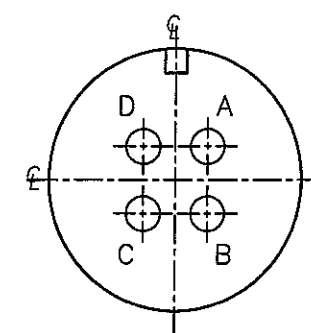
SIZE: 14S-9
2-#16 CONTACTS



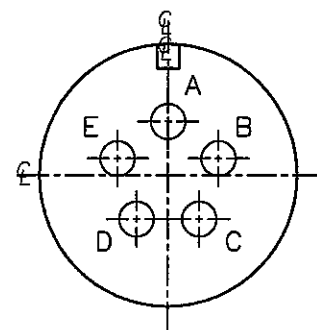
SIZE: 14S-1
3-#16 CONTACTS



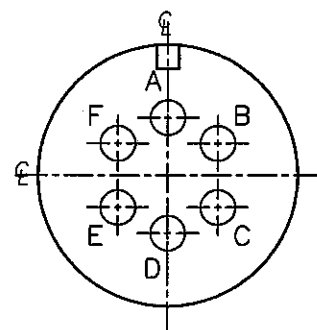
SIZE: 14S-7
3-#16 CONTACTS



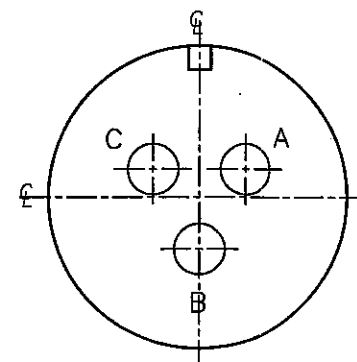
SIZE: 14S-2
4-#16 CONTACTS



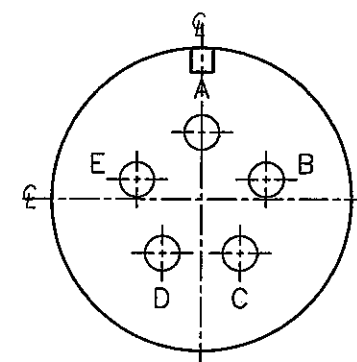
SIZE: 14S-5
5-#16 CONTACTS



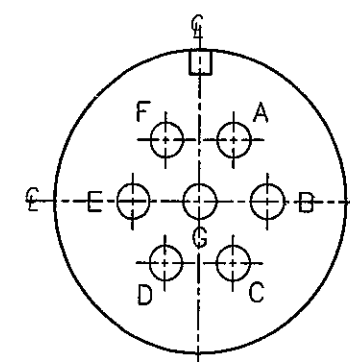
SIZE: 14S-6
6-#16 CONTACTS



SIZE: 16-10
3-#12 CONTACTS



SIZE: 16S-8
5-#16 CONTACTS



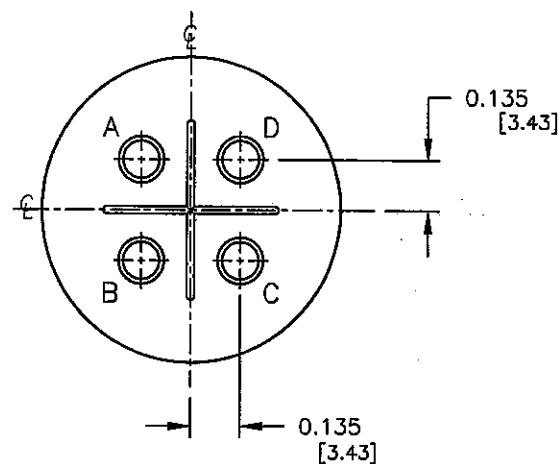
SIZE: 16S-1
7-#16 CONTACTS

FACE VIEWS
(FOR PIN CONTACTS)

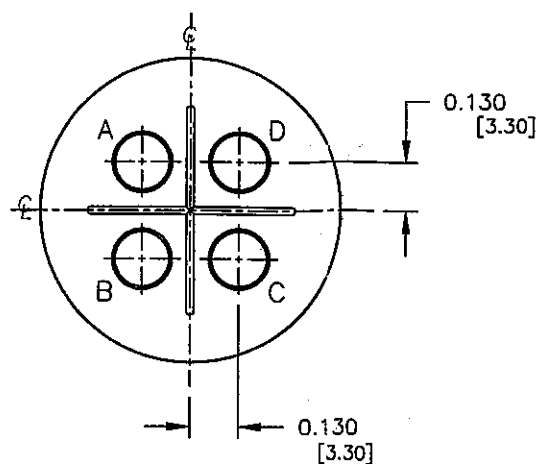
COPY

PART NUMBER: HPMQSTD

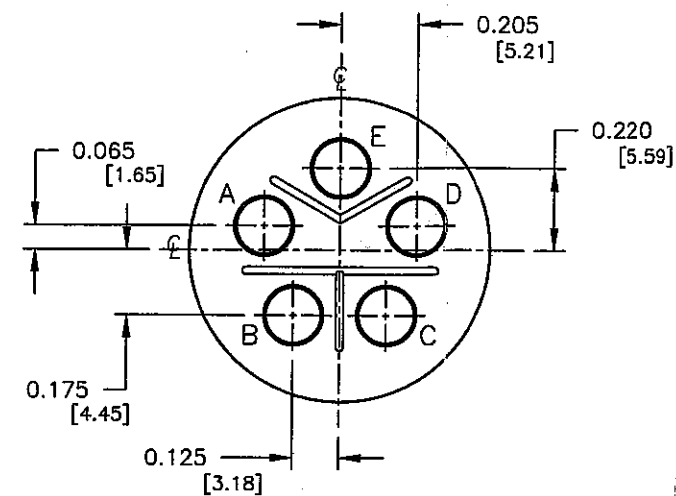
REV. INIT.	DATE	DESCRIPTION
A	RCS 11-12-03	CREATED DRAWING PER ECR #2672
<small>ALL INFORMATION ILLUSTRATED IS THE PROPERTY OF "CONXALL CORPORATION." UNAUTHORIZED DUPLICATION OR DISTRIBUTION OF THIS DOCUMENT IS PROHIBITED.</small>		
<small>ALL UNITS ARE IN FEET, INCHES, FRACTION OF INCHES AND DECIMALS.</small>		
<small>UNLESS OTHERWISE SPECIFIED TOLERANCES:</small>		
<small>3 PLACE DECIMALS ±.005</small>		
<small>ANGLES ±1°</small>		
<small>FRACTIONS ±1/16</small>		
<small>CRITICAL CHARACTERISTIC FLAG PER SPEC. XXXX</small>		
ORIG. DRAWN BY:	DATE:	
RCS	11-12-03	
CHECKED BY:	DATE:	
<i>bol</i>	2/17/05	
APPROVED BY:	DATE:	
<i>mt</i>	2/17/05	
SCALE	SIZE	SHEET
NTS	B	2 OF 8
FILE:	DIRECTORY:	PART NUMBER:
HPMQSTDH2	DETAILS	HPMQSTD
<small>601 E. WILDWOOD VILLA PARK, IL 60181</small>		<small>REV. A</small>



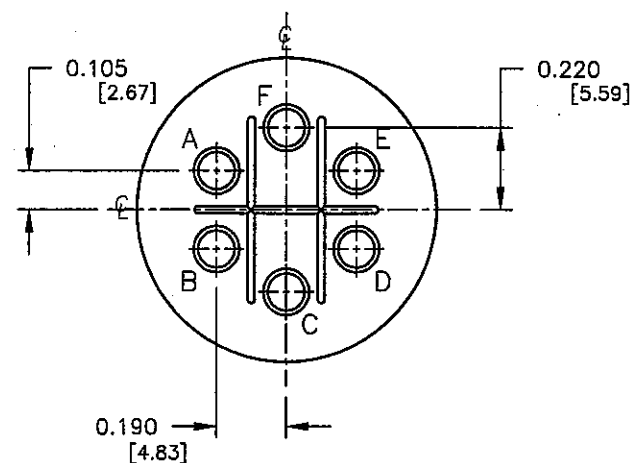
SIZE: 18-4
4-#16 CONTACTS



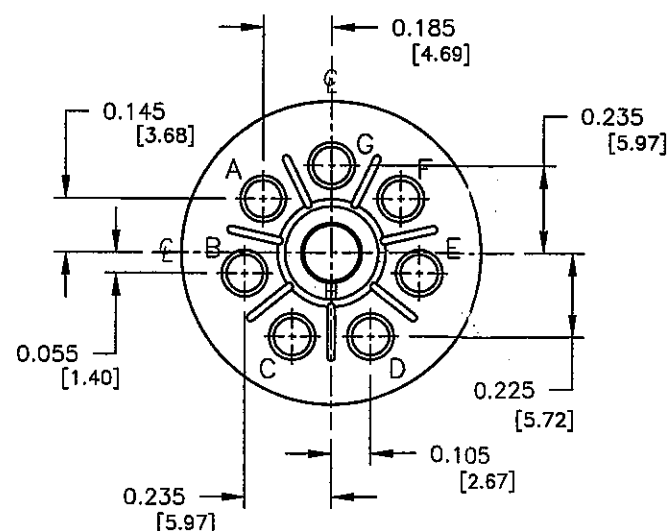
SIZE: 18-10
4-#12 CONTACTS



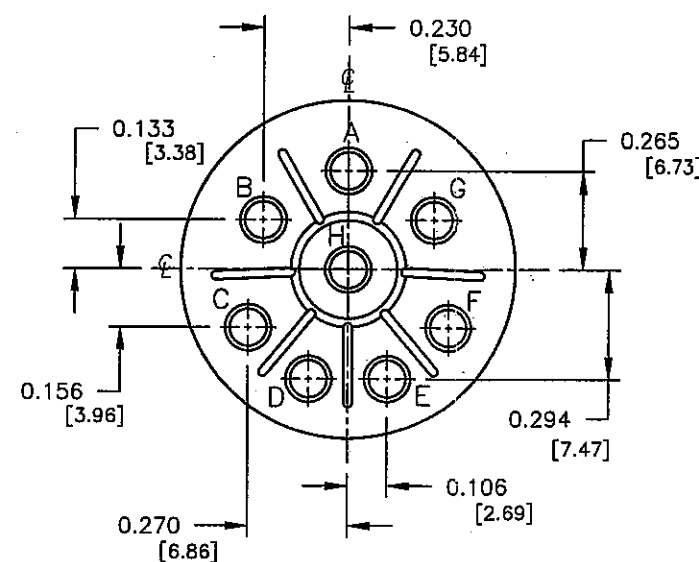
SIZE: 18-11
5-#12 CONTACTS



SIZE: 18-12
6-#16 CONTACTS



SIZE: 18-8
7-#16 CONTACTS
1-#12 CONTACTS



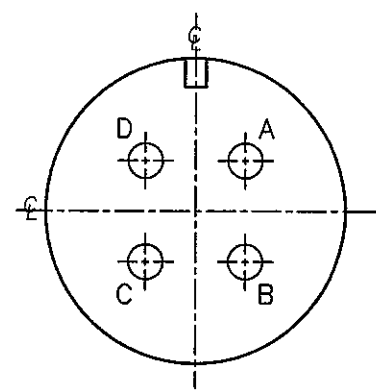
SIZE: 20-7
8-#16 CONTACTS

COPY

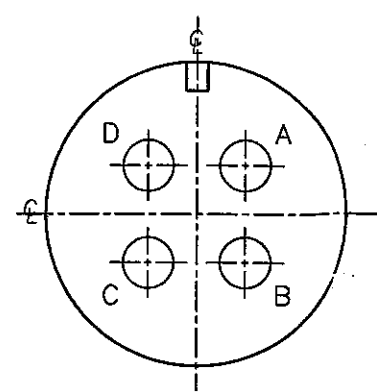
WIRE VIEWS
(FOR PIN CONTACTS)

PART NUMBER: HPMQSTD

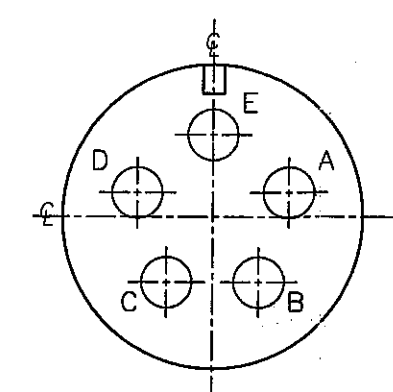
A	RCS	11-12-03	CREATED DRAWING PER ECR #2672
REV.	INIT.	DATE	DESCRIPTION
ALL INFORMATION ILLUSTRATED IS THE PROPERTY OF "CONZALL CORPORATION." UNAUTHORIZED DUPLICATION OR DISTRIBUTION OF THIS DOCUMENT IS PROHIBITED.			ORG. DRAWN BY: DATE: RCS 11-12-03 CHECKED BY: <i>Kahr</i> 2/17/05 APPROVED BY: <i>Kahr</i> 2/17/05 SCALE: SIZE: SHEET: NTS B 3 OF 8 FILE: DIRECTORY: HPMQSTD SH3 DETAILS PART NUMBER: HPMQSTD
ALL UNITS ARE IN FEET, INCHES, FRACTION OF INCHES AND DECIMALS. UNLESS OTHERWISE SPECIFIED: 3 PLACE DECIMALS ±.005 ANGLES ±1° FRACTIONS ±1/16 CRITICAL CHARACTERISTIC FLAG PER SPEC. XXXX			601 E. WILDWOOD VILLA PARK, IL 60181 TITLE: HOLE PATTERNS MIL-E-QUAL SIZES: 18 & 20 CUSTOMER:



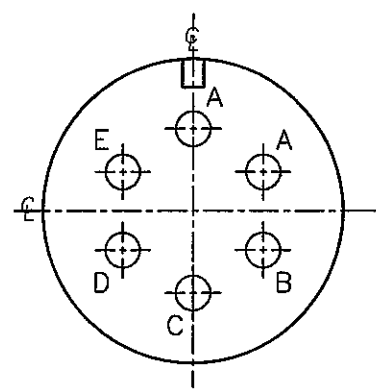
SIZE: 18-4
4-#16 CONTACTS



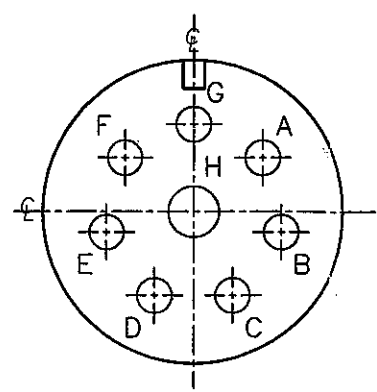
SIZE: 18-10
4-#12 CONTACTS



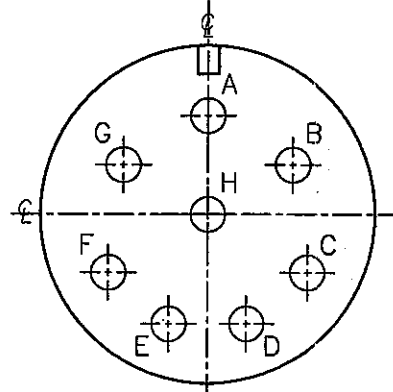
SIZE: 18-11
5-#12 CONTACTS



SIZE: 18-12
6-#16 CONTACTS



SIZE: 18-8
7-#16 CONTACTS
1-#12 CONTACTS



SIZE: 20-7
8-#16 CONTACTS

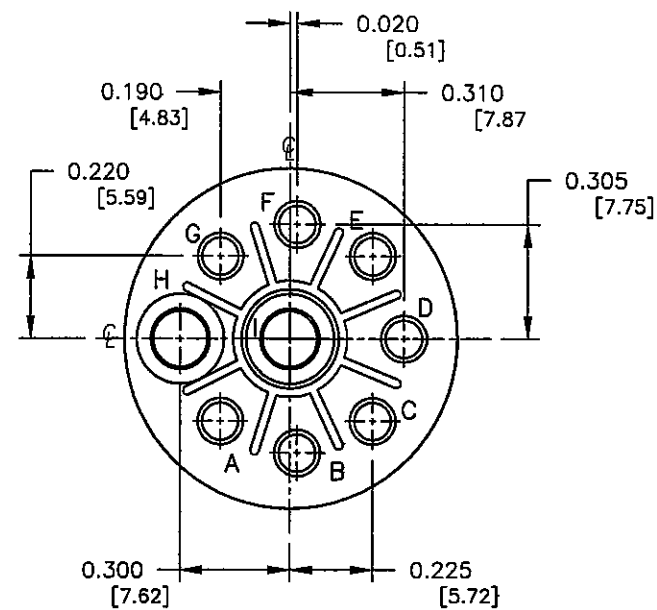
COPY

FACE VIEWS
(FOR PIN CONTACTS)

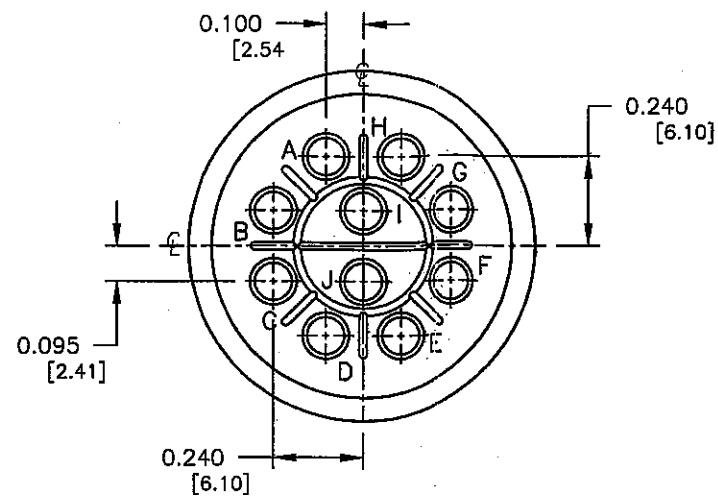
PART NUMBER: HPMQSTD

A	RCS	11-12-03	CREATED DRAWING PER ECR #2672
REV.	INIT.	DATE	DESCRIPTION
ALL INFORMATION ILLUSTRATED IS THE PROPERTY OF CONZALL CORPORATION. UNAUTHORIZED DUPLICATION OR DISTRIBUTION OF THIS DOCUMENT IS PROHIBITED.			
ALL UNITS ARE IN FEET, INCHES, FRACTION OF INCHES AND DECIMALS. UNLESS OTHERWISE SPECIFIED TOLERANCES: 3 PLACE DECIMALS ±.005 ANGLES ±1° FRACTIONS ±1/16 ▽ = CRITICAL CHARACTERISTIC FLAG PER SPEC. XXXX			ORG. DRAWN BY: RCS CHECKED BY: <i>ROL</i> 2/17/05 APPROVED BY: <i>MC</i> 2/17/05 SCALE: NTS B 4 OF 8 FILE: HPMQSTD4 DIRECTORY: DETAILS
TITLE: HOLE PATTERNS MIL-E-QUAL SIZES: 18 & 20 CUSTOMER:			PART NUMBER: HPMQSTD REV. A

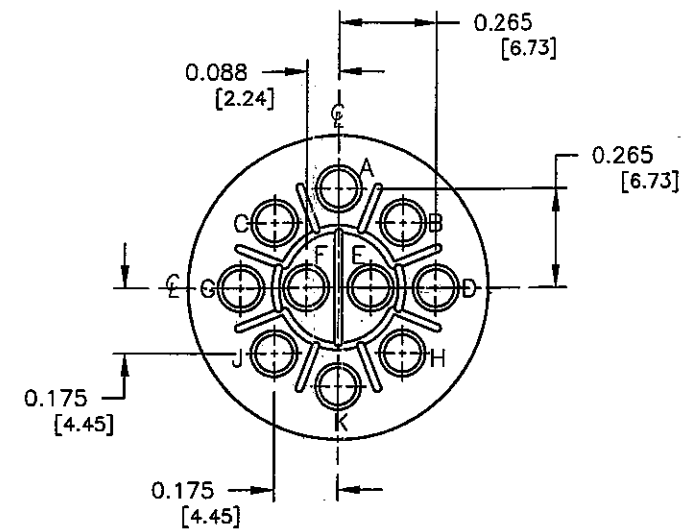
MFG. ENG. *Jahn* 2/17/05



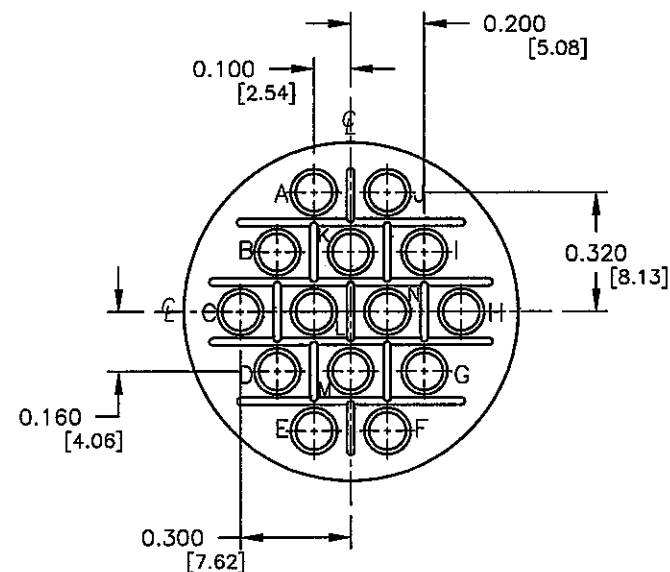
SIZE: 20-16
7-#16 CONTACTS
2-#12 CONTACTS



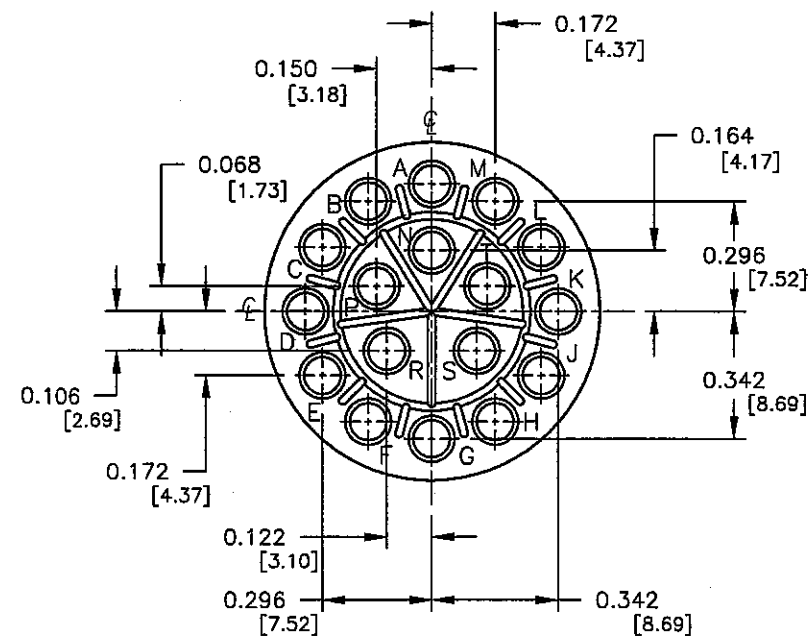
SIZE: 18-1
10-#16 CONTACTS



SIZE: 18-19
10-#16 CONTACTS



SIZE: 20-27
14-#16 CONTACTS



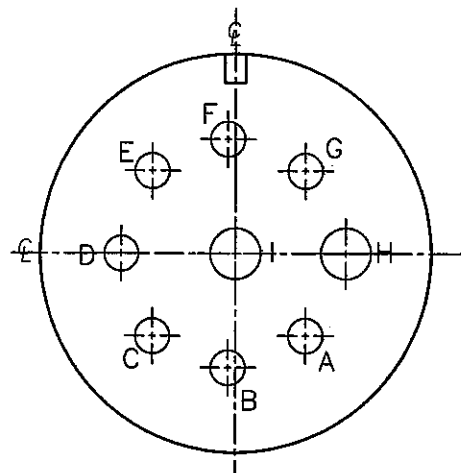
SIZE: 20-29
17-#16 CONTACTS

COPY

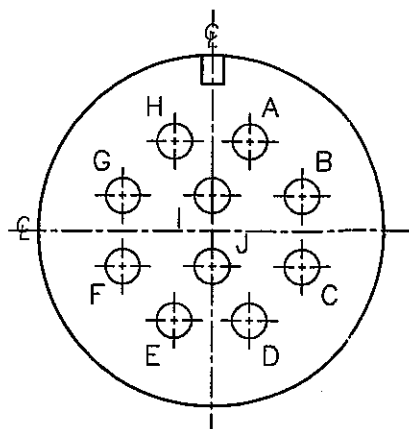
WIRE VIEWS
(FOR PIN CONTACTS)

A	RCS	11-12-03	CREATED DRAWING PER ECR #2672
REV.	INIT.	DATE	DESCRIPTION
ALL INFORMATION ILLUSTRATED IS THE PROPERTY OF CONNELL CORPORATION. UNAUTHORIZED DUPLICATION OR DISTRIBUTION OF THIS DOCUMENT IS PROHIBITED.			ORIG. DRAWN BY: DATE: RCS 11-12-03 CHECKED BY: <i>RL</i> 2/17/05 APPROVED BY: <i>MD</i> 2/17/05 UNLESS OTHERWISE SPECIFIED TOLERANCES: 3 PLACE DECIMALS ±.005 ANGLES ±1° FRACTIONS ±1/16 CRITICAL CHARACTERISTIC FLAG PER SPEC. XXXX
SCALE: SIZE: SHEET: NTS: B 5 OF 8 FILE: HPMQSTDH5 DETAILS PART NUMBER: HPMQSTD			601 E. WILDWOOD VILLA PARK, IL 60181 TITLE: HOLE PATTERNS MIL-E-QUAL SIZES: 18 & 20 CUSTOMER:
REV. A			

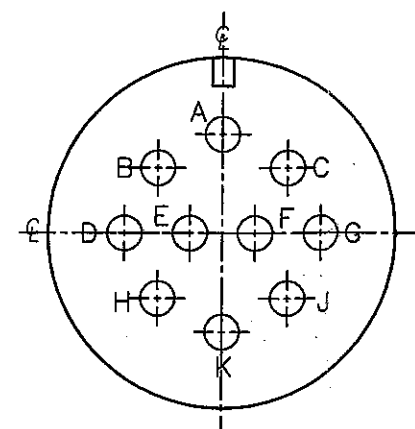
PART NUMBER: HPMQSTD



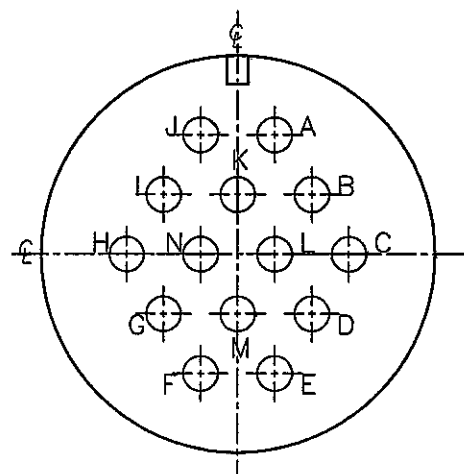
SIZE: 20-16
7-#16 CONTACTS
2-#12 CONTACTS



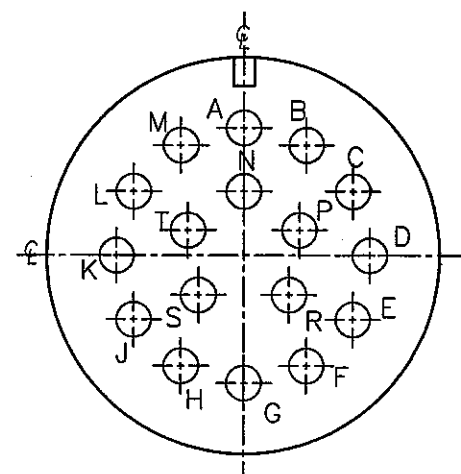
SIZE: 18-1
10-#16 CONTACTS



SIZE: 18-19
10-#16 CONTACTS



SIZE: 20-27
14-#16 CONTACTS



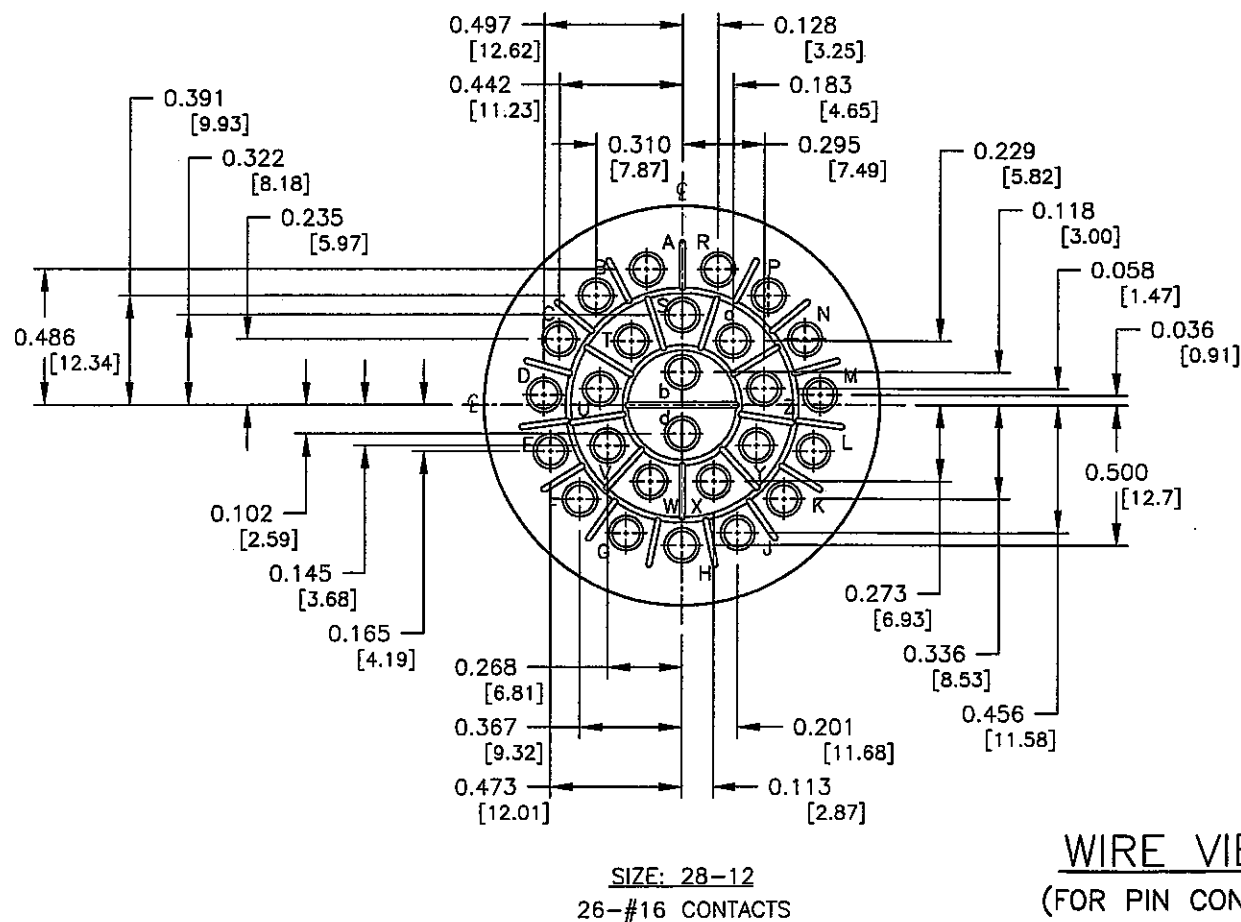
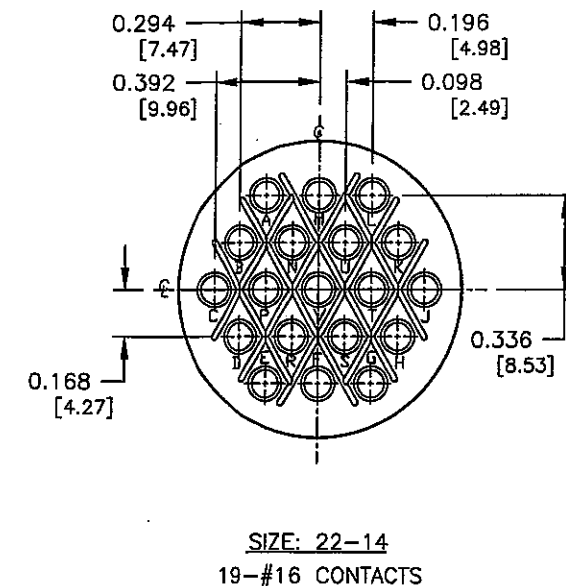
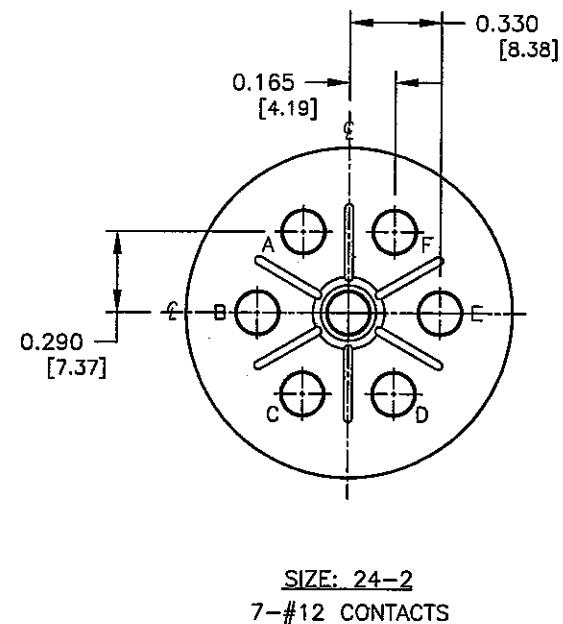
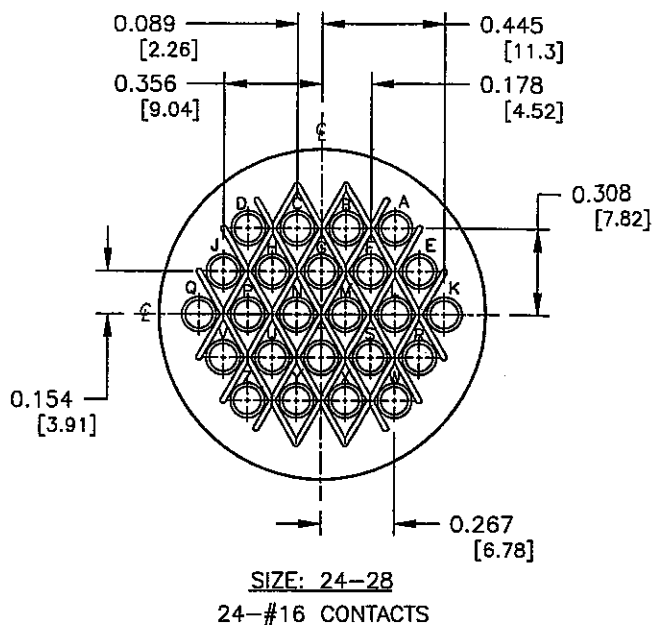
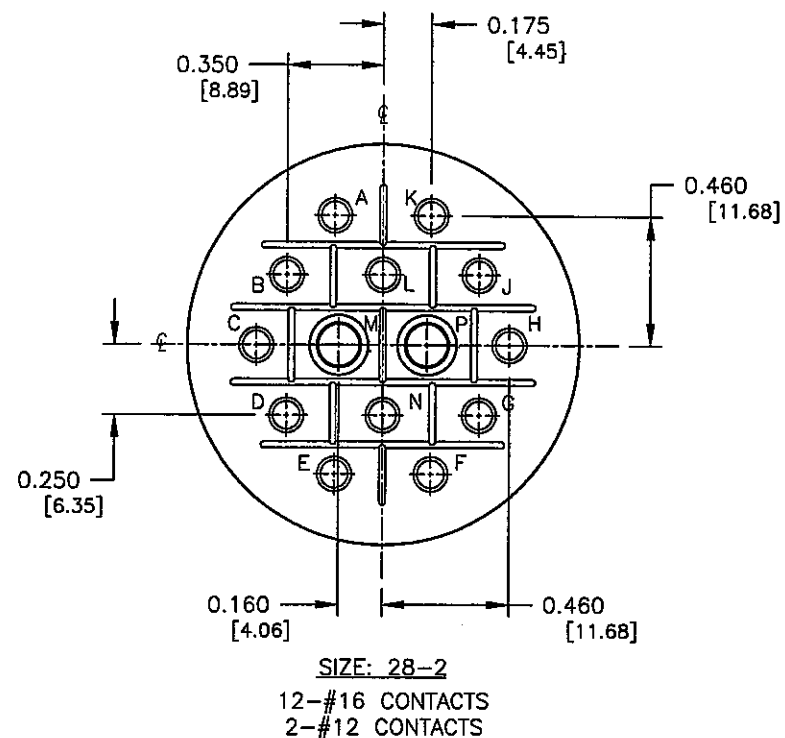
SIZE: 20-29
17-#16 CONTACTS

FACE VIEWS
(FOR PIN CONTACTS)

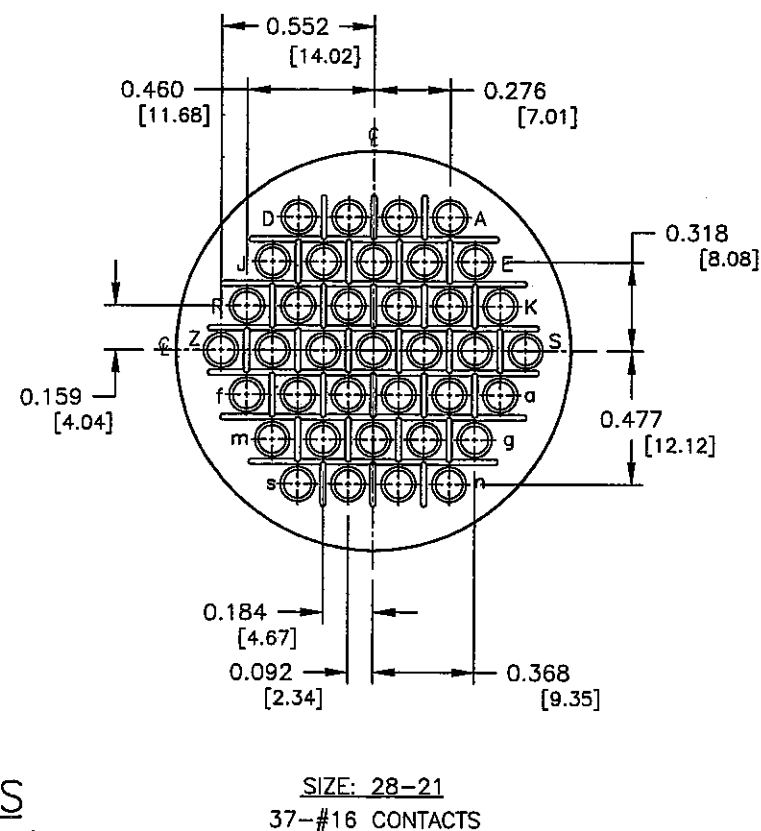
COPY

PART NUMBER: HPMQSTD

A	RCS	11-12-03	CREATED DRAWING PER ECR #2672
REV.	INIT.	DATE	DESCRIPTION
<small>ALL INFORMATION ILLUSTRATED IS THE PROPERTY OF CONXALL CORPORATION. UNAUTHORIZED DUPLICATION OR DISTRIBUTION OF THIS DOCUMENT IS PROHIBITED.</small>			<small>ORIG. DRAWN BY: DATE:</small> RCS 11-12-03
<small>ALL UNITS ARE IN FEET, INCHES, FRACTION OF INCHES AND DECIMALS.</small>			
<small>UNLESS OTHERWISE SPECIFIED TOLERANCES:</small> 3 PLACE DECIMALS ±.005 ANGLES ±1° FRACTIONS ±1/16			
<small>APPROVED BY:</small> <i>gahr</i> 2/17/05			<small>601 E. WILDWOOD VILLA PARK, IL 60181</small>
<small>SCALE: SIZE: SHEET</small> NTS B 6 OF 8			<small>TITLE:</small> HOLE PATTERNS MIL-E-QUAL SIZES: 18 & 20
<small>FILE: DIRECTORY: PART NUMBER:</small> HPMQSTD5H6 DETAILS HPMQSTD			<small>REV. A</small>



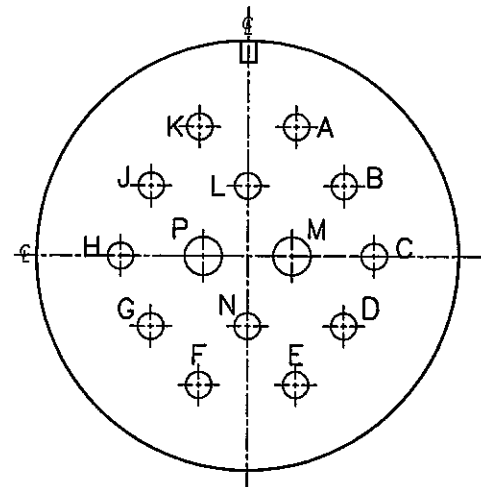
WIRE VIEWS
(FOR PIN CONTACTS)



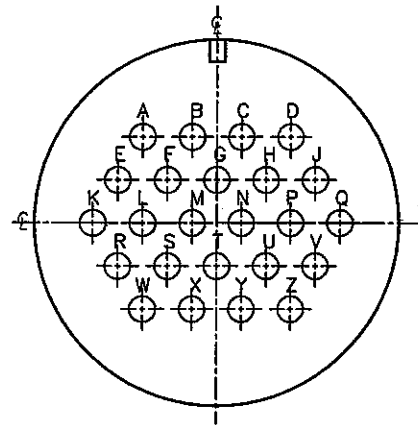
COPY

PART NUMBER: HPMQSTD

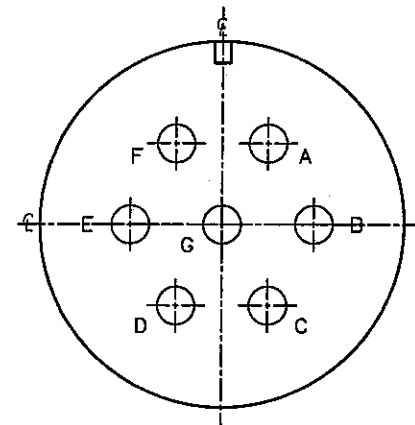
REV. A	INIT. RCS	DATE 11-12-03	DESCRIPTION CREATED DRAWING PER ECR #2672
ALL INFORMATION ILLUSTRATED IS THE PROPERTY OF CONZALL CORPORATION. UNAUTHORIZED REPRODUCTION OR DISTRIBUTION OF THIS DOCUMENT IS PROHIBITED.			ORIG. DRAWN BY: DATE: RCS 11-12-03
ALL UNITS ARE IN FEET, INCHES, FRACTION OF INCHES AND DECIMALS.			CHECKED BY: <i>John</i> 2/17/05
UNLESS OTHERWISE SPECIFIED TOLERANCES: 3 PLACE DECIMALS ±.005 ANGLES ±1° FRACTIONS ±1/16			APPROVED BY: <i>John</i> 2/17/05
CRITICAL CHARACTERISTIC FLAG PER SPEC. XXXX			SCALE: SIZE 7 OF 8
FILE: HPMQSTD7			DIRECTORY: DETAILS
PART NUMBER: HPMQSTD			CUSTOMER: 601 E. WILDWOOD VILLA PARK, IL 60181
			TITLE: HOLE PATTERNS MIL-E-QUAL SIZES: 22, 24 & 28
			REV. A



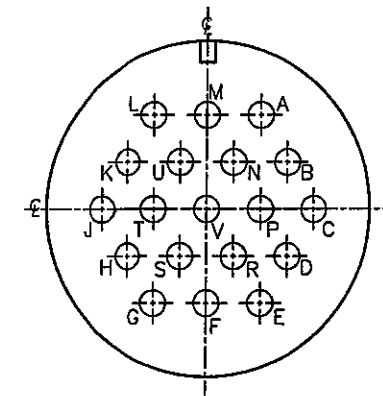
SIZE: 28-2
12-#16 CONTACTS
2-#12 CONTACTS



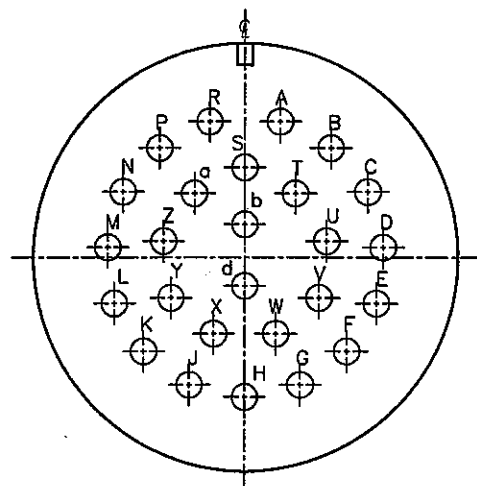
SIZE: 24-28
24-#16 CONTACTS



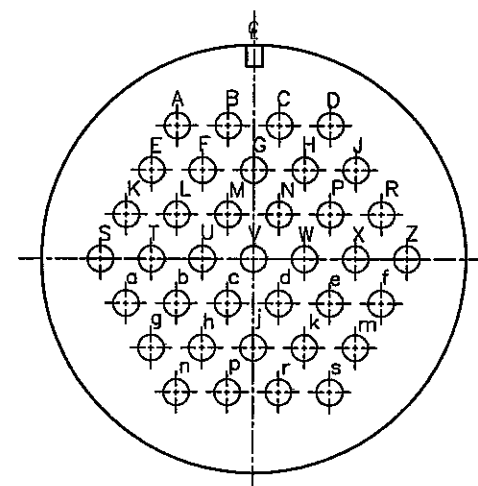
SIZE: 24-2
7-#12 CONTACTS



SIZE: 22-14
19-#16 CONTACTS



SIZE: 28-12
26-#16 CONTACTS



SIZE: 28-21
37-#16 CONTACTS

FACE VIEWS
(FOR PIN CONTACTS)

COPY

PART NUMBER: HPMQSTD

REV. A	RCS	11-12-03	CREATED DRAWING PER ECR #2672
REV. INIT.	DATE	DESCRIPTION	
ALL INFORMATION ILLUSTRATED IS THE PROPERTY OF CONXALL CORPORATION. UNAUTHORIZED DUPLICATION OR DISTRIBUTION OF THIS DOCUMENT IS PROHIBITED.		ORIG. DRAWN BY: RCS	DATE: 11-12-03
ALL UNITS ARE IN FEET, INCHES, FRACTION OF INCHES AND DECIMALS.		CHECKED BY: [Signature]	DATE: 2/17/05
UNLESS OTHERWISE SPECIFIED TOLERANCES:		APPROVED BY: [Signature]	DATE: 2/17/05
3 PLACE DECIMALS ±.005		SCALE: NTS	SIZE: B
ANGLES ±1/16		FRACTIONS ±1/16	SHEET 8 OF 8
△ = CRITICAL CHARACTERISTIC FLAG PER SPEC. XXXX		FILE: HPMQSTD	DIRECTORY: SHE DETAILS
		CUSTOMER: 601 E. WILDWOOD VILLA PARK, IL 60181	TITLE: HOLE PATTERNS MIL-E-QUAL SIZES: 22, 24 & 28
		PART NUMBER: HPMQSTD	REV. A

Mouser Electronics

Authorized Distributor

Click to View Pricing, Inventory, Delivery & Lifecycle Information:

[Switchcraft:](#)

[CXC3102A14S5P](#)