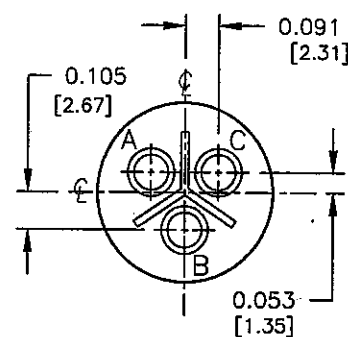
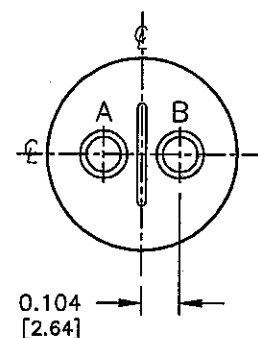


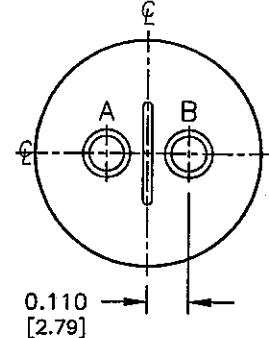
SIZE: 10SL-4
2-#16 CONTACTS



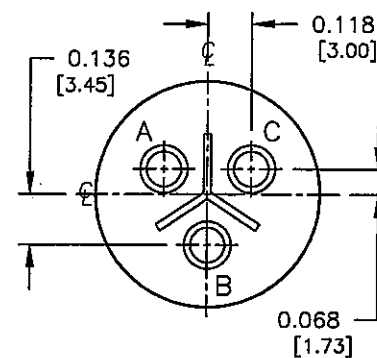
SIZE: 10SL-3
3-#16 CONTACTS



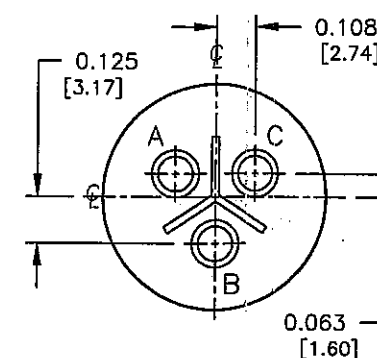
SIZE: 12S-3
2-#16 CONTACTS



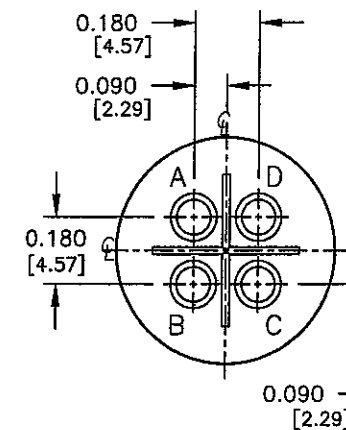
SIZE: 14S-9
2-#16 CONTACTS



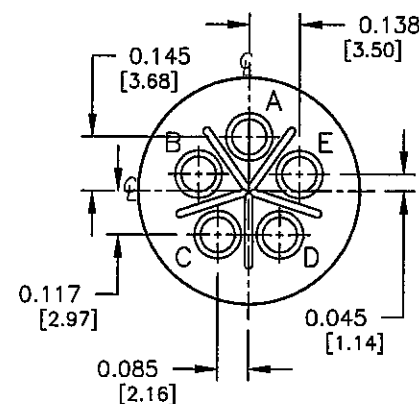
SIZE: 14S-1
3-#16 CONTACTS



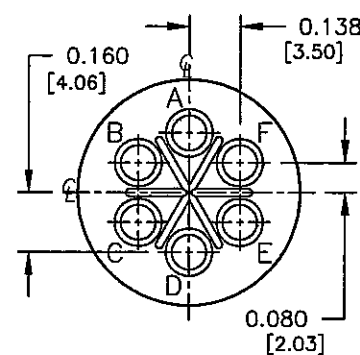
SIZE: 14S-7
3-#16 CONTACTS



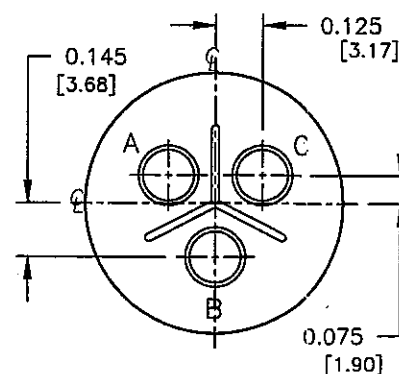
SIZE: 14S-2
4-#16 CONTACTS



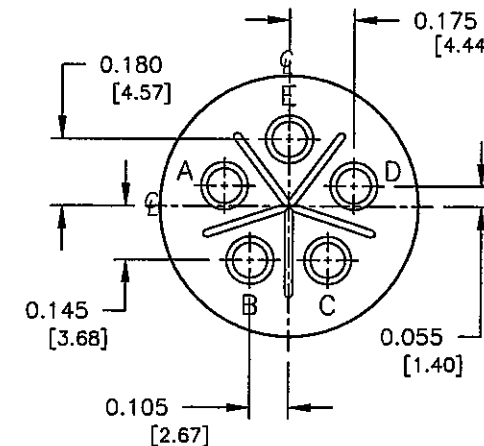
SIZE: 14S-5
5-#16 CONTACTS



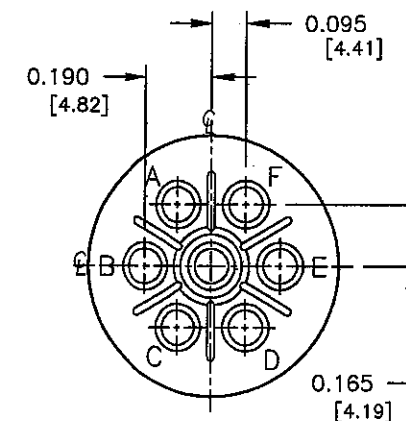
SIZE: 14S-6
6-#16 CONTACTS



SIZE: 16-10
3-#12 CONTACTS



SIZE: 16S-8
5-#16 CONTACTS



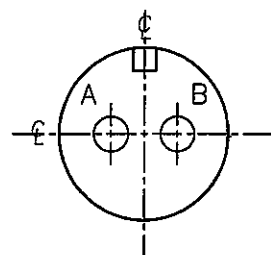
SIZE: 16S-1
7-#16 CONTACTS

WIRE VIEWS
(FOR PIN CONTACTS)

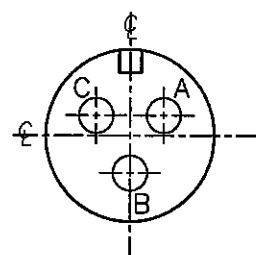
COPY

PART NUMBER: HPMQSTD

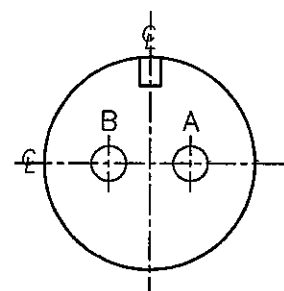
REV. INIT.	DATE	DESCRIPTION
A	11-12-03	CREATED DRAWING PER ECR #2672
ALL INFORMATION ILLUSTRATED IS THE PROPERTY OF CONNELL CORPORATION. UNAUTHORIZED REPRODUCTION OR DISTRIBUTION OF THIS DOCUMENT IS PROHIBITED.		
ALL UNITS ARE IN FEET, INCHES, FRACTION OF INCHES AND DECIMALS.		
UNLESS OTHERWISE SPECIFIED TOLERANCES: 3 PLACE DECIMALS ±.005 ANGLES ±1° FRACTIONS ±1/16		
CRITICAL CHARACTERISTIC FLAG PER SPEC. XXXX		
ORIG. DRAWN BY:	DATE:	
RCS	11-12-03	
CHECKED BY:	DATE:	
<i>John</i>	2/17/05	
APPROVED BY:	DATE:	
<i>John</i>	2/17/05	
SCALE	SIZE	SHEET
NTS	B	1 OF 8
FILE:	DIRECTORY:	PART NUMBER:
HPMQSTDH1	DETAILS	HPMQSTD
TITLE: HOLE PATTERNS MIL-E-QUAL SIZES: 10SL, 12S, 14S, 16 & 16S		
CUSTOMER:		
REV. A		



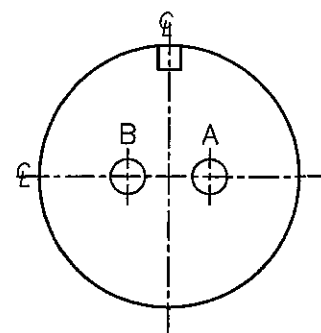
SIZE: 10SL-4
2-#16 CONTACTS



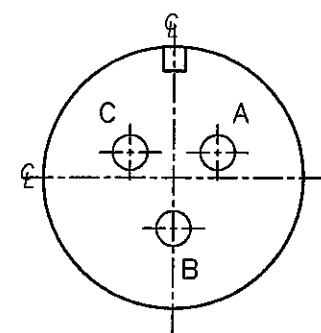
SIZE: 10SL-3
3-#16 CONTACTS



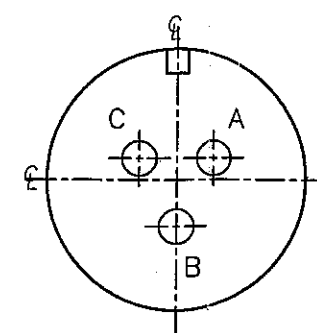
SIZE: 12S-3
2-#16 CONTACTS



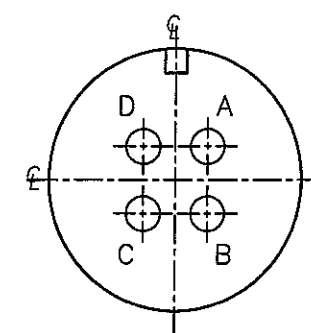
SIZE: 14S-9
2-#16 CONTACTS



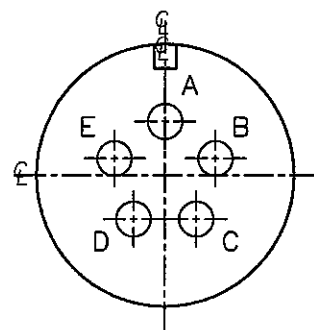
SIZE: 14S-1
3-#16 CONTACTS



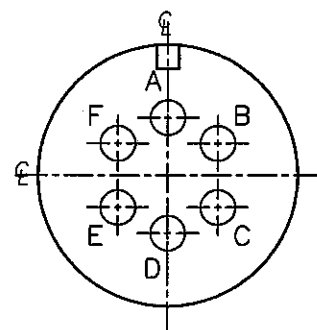
SIZE: 14S-7
3-#16 CONTACTS



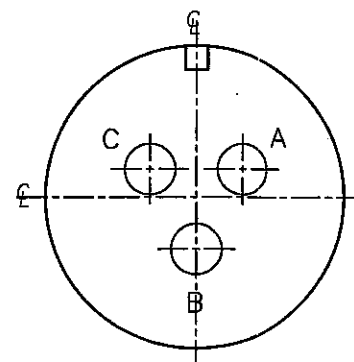
SIZE: 14S-2
4-#16 CONTACTS



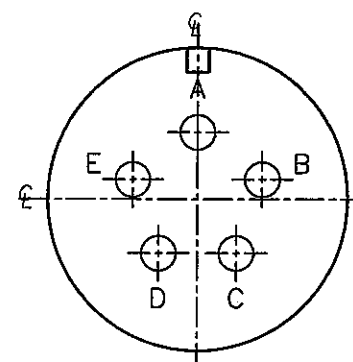
SIZE: 14S-5
5-#16 CONTACTS



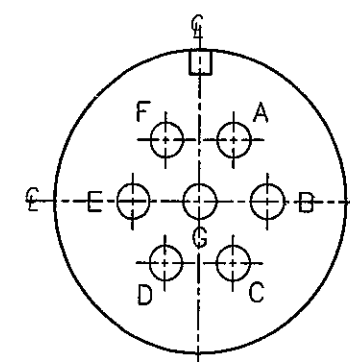
SIZE: 14S-6
6-#16 CONTACTS



SIZE: 16-10
3-#12 CONTACTS



SIZE: 16S-8
5-#16 CONTACTS



SIZE: 16S-1
7-#16 CONTACTS

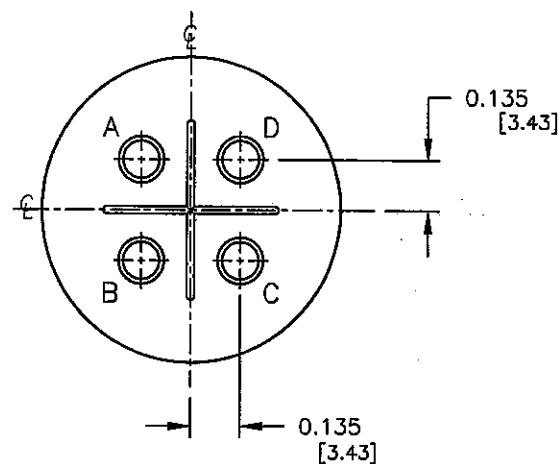
FACE VIEWS
(FOR PIN CONTACTS)

COPY

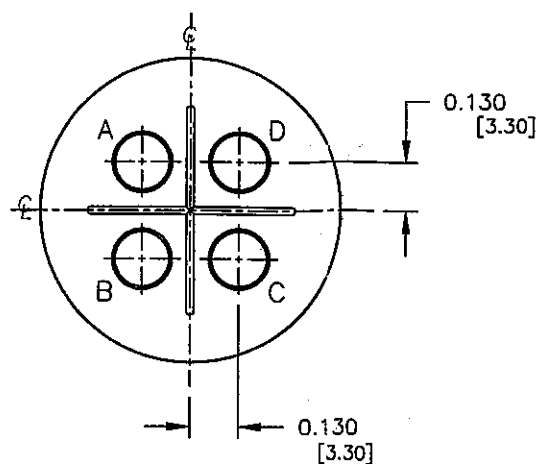
PART NUMBER: HPMQSTD

A	RCS	11-12-03	CREATED DRAWING PER ECR #2672
REV.	INIT.	DATE	DESCRIPTION
<small>ALL INFORMATION ILLUSTRATED IS THE PROPERTY OF "CONXALL CORPORATION." UNAUTHORIZED DUPLICATION OR DISTRIBUTION OF THIS DOCUMENT IS PROHIBITED.</small>			<small>ORIG. DRAWN BY: DATE:</small> RCS 11-12-03
<small>ALL UNITS ARE IN FEET, INCHES, FRACTION OF INCHES AND DECIMALS.</small>			<small>CHECKED BY:</small> <i>bol</i> 2/17/05
<small>UNLESS OTHERWISE SPECIFIED TOLERANCES:</small> 3 PLACE DECIMALS ±.005 ANGLES ±1° FRACTIONS ±1/16			<small>APPROVED BY:</small> <i>mt</i> 2/17/05
<small>3 PLACE DECIMALS ±.005</small> <small>ANGLES ±1°</small> <small>FRACTIONS ±1/16</small>			<small>SCALE</small> NTS <small>SIZE</small> B <small>SHEET</small> 2 OF 8
<small>CRITICAL CHARACTERISTIC FLAG PER SPEC. XXXX</small>			<small>FILE:</small> HPMQSTDH2 <small>DIRECTORY:</small> DETAILS
<small>PART NUMBER:</small> HPMQSTD			<small>REV.:</small> A

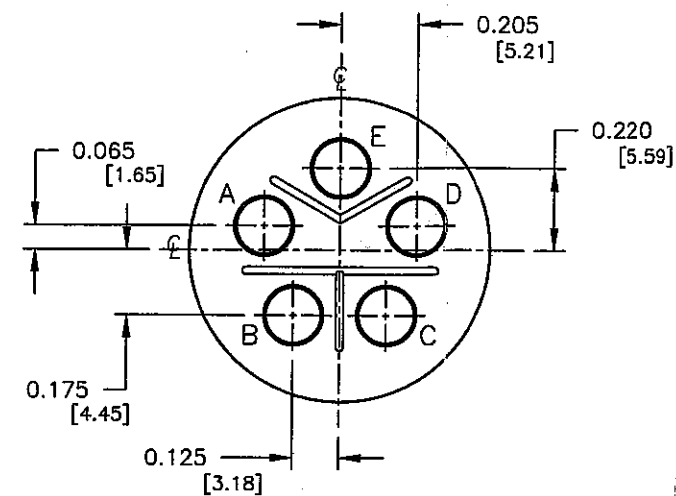
Conxall
601 E. WILDWOOD VILLA PARK, IL 60181
TITLE: HOLE PATTERNS
MIL-E-QUAL SIZES:
10SL, 12S, 14S, 16 & 16S
CUSTOMER:



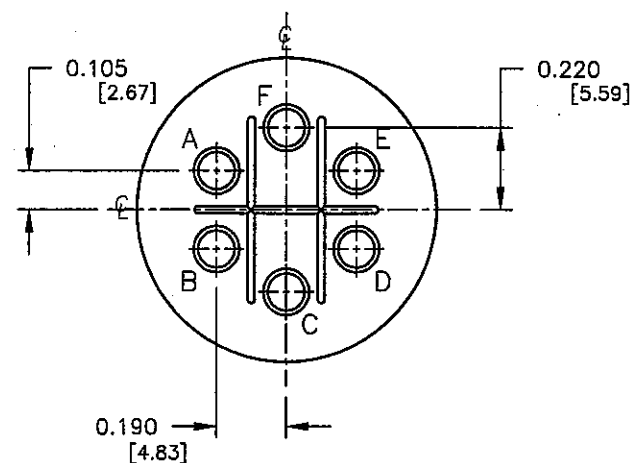
SIZE: 18-4
4-#16 CONTACTS



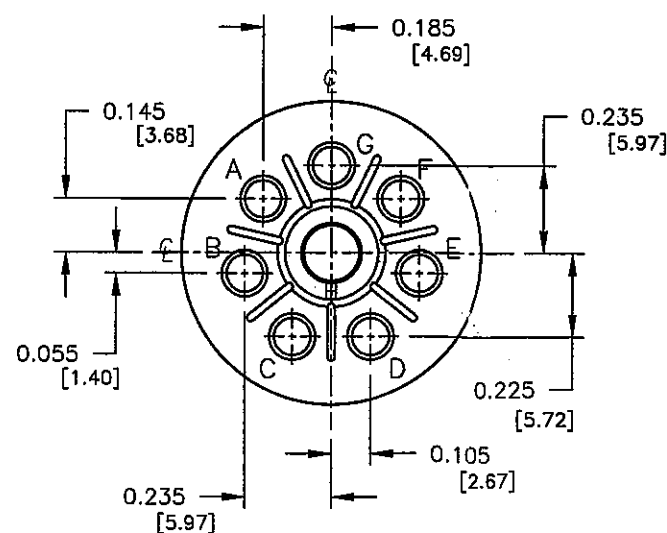
SIZE: 18-10
4-#12 CONTACTS



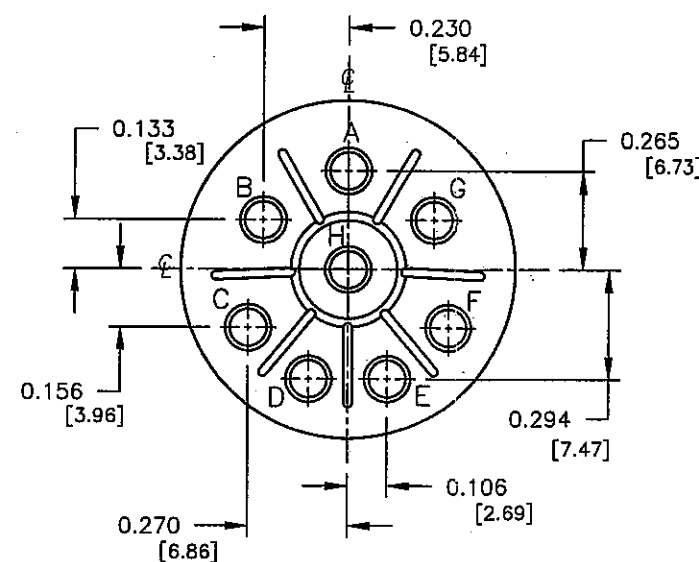
SIZE: 18-11
5-#12 CONTACTS



SIZE: 18-12
6-#16 CONTACTS



SIZE: 18-8
7-#16 CONTACTS
1-#12 CONTACTS



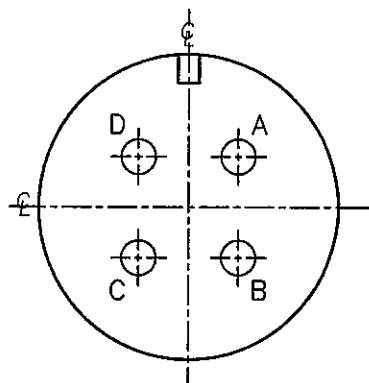
SIZE: 20-7
8-#16 CONTACTS

COPY

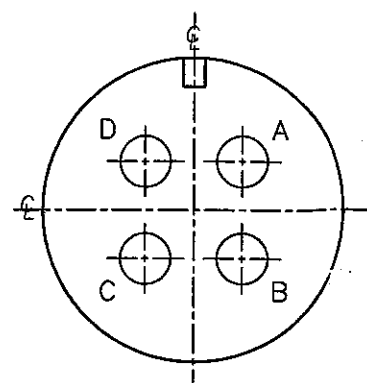
WIRE VIEWS
(FOR PIN CONTACTS)

PART NUMBER: HPMQSTD

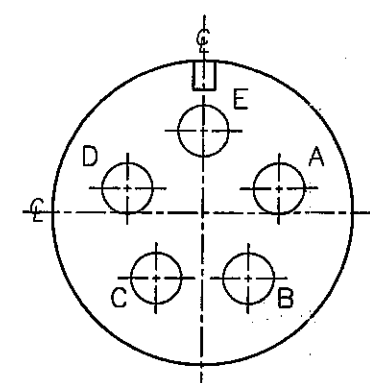
A	RCS	11-12-03	CREATED DRAWING PER ECR #2672
REV.	INIT.	DATE	DESCRIPTION
ALL INFORMATION ILLUSTRATED IS THE PROPERTY OF "CONZALL CORPORATION." UNAUTHORIZED DUPLICATION OR DISTRIBUTION OF THIS DOCUMENT IS PROHIBITED.			ORG. DRAWN BY: RCS DATE: 11-12-03 CHECKED BY: <i>Kahn</i> 2/17/05 APPROVED BY: <i>Kahn</i> 2/17/05
ALL UNITS ARE IN FEET, INCHES, FRACTION OF INCHES AND DECIMALS. UNLESS OTHERWISE SPECIFIED: 3 PLACE DECIMALS ±.005 ANGLES ±1° FRACTIONS ±1/16			601 E. WILDWOOD VILLA PARK, IL 60181 TITLE: HOLE PATTERNS MIL-E-QUAL SIZES: 18 & 20
FILE: HPMQSTD DIRECTORY: DETAILS			CUSTOMER: HPMQSTD PART NUMBER: HPMQSTD REV. A



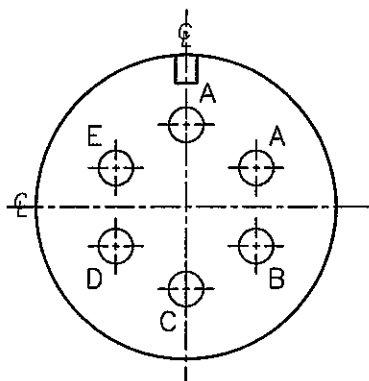
SIZE: 18-4
4-#16 CONTACTS



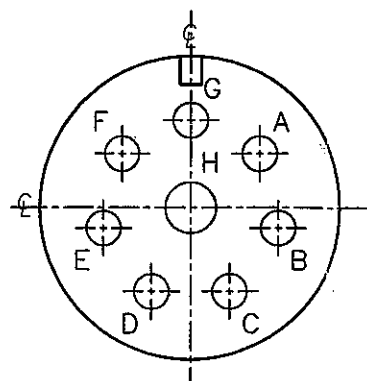
SIZE: 18-10
4-#12 CONTACTS



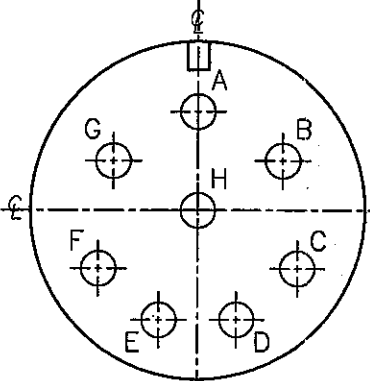
SIZE: 18-11
5-#12 CONTACTS



SIZE: 18-12
6-#16 CONTACTS



SIZE: 18-8
7-#16 CONTACTS
1-#12 CONTACTS



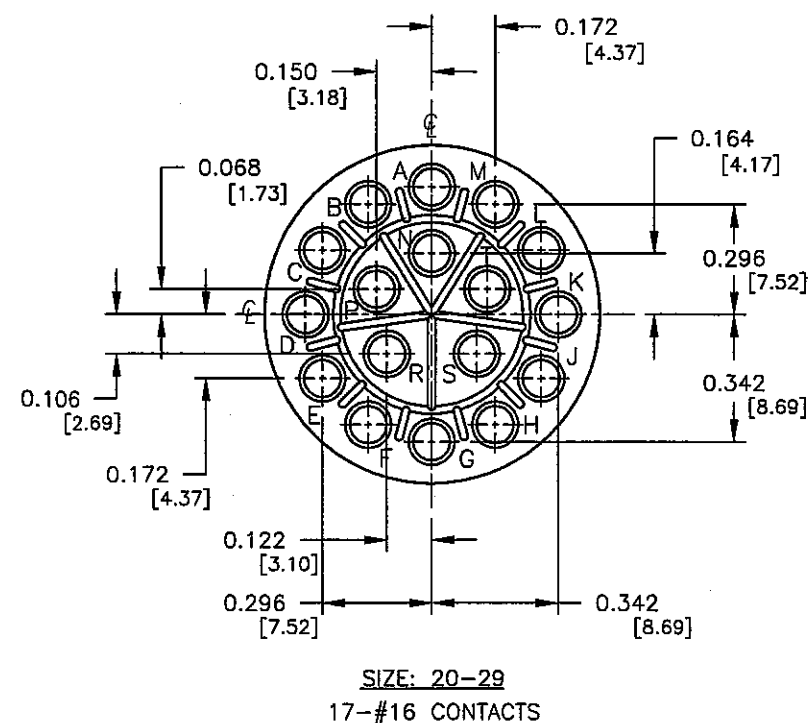
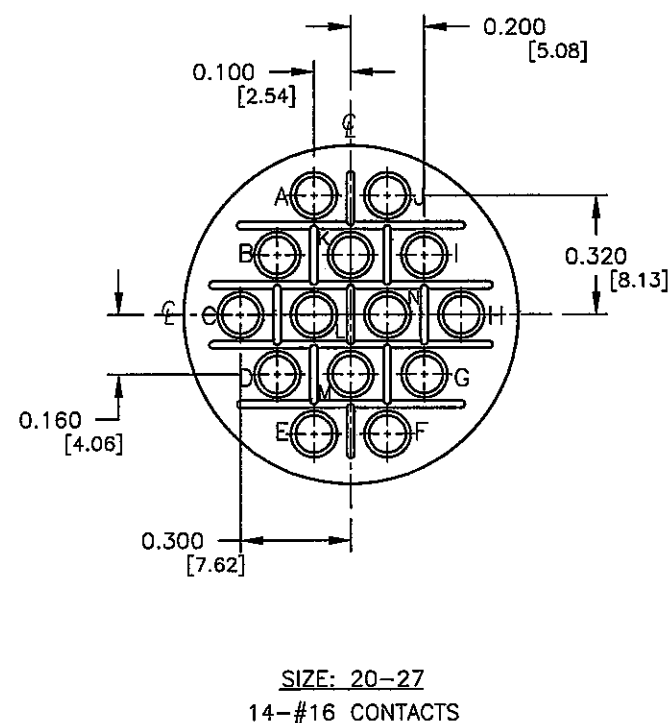
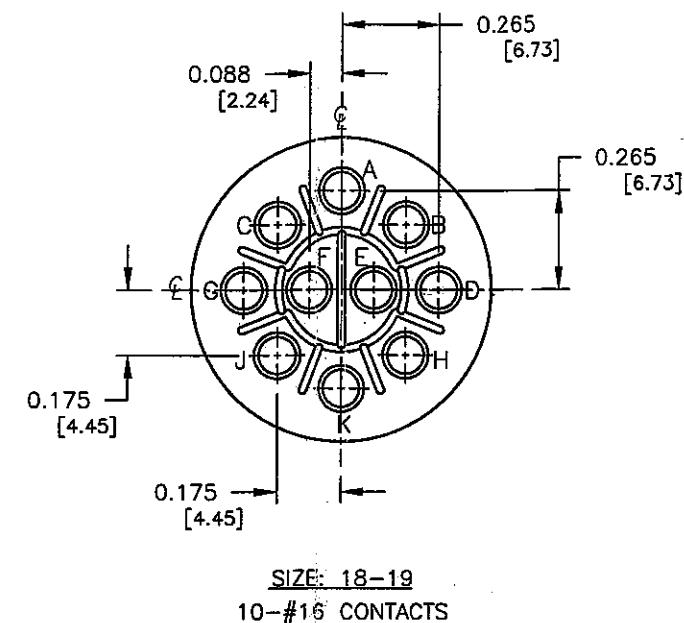
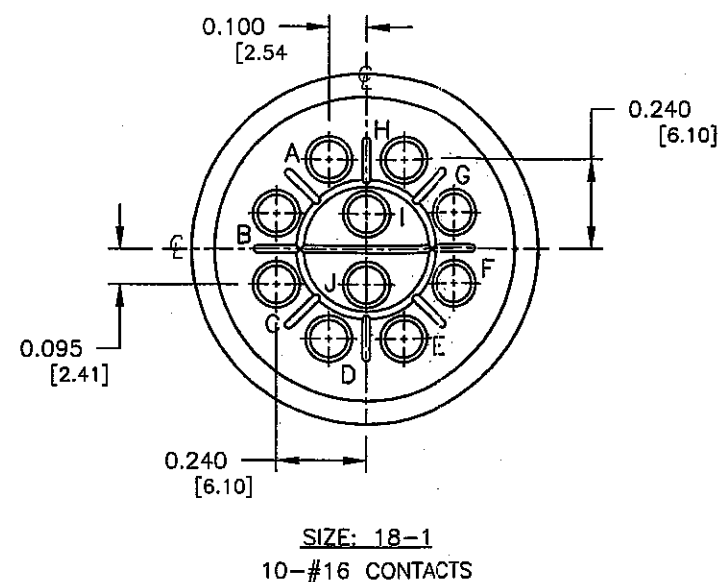
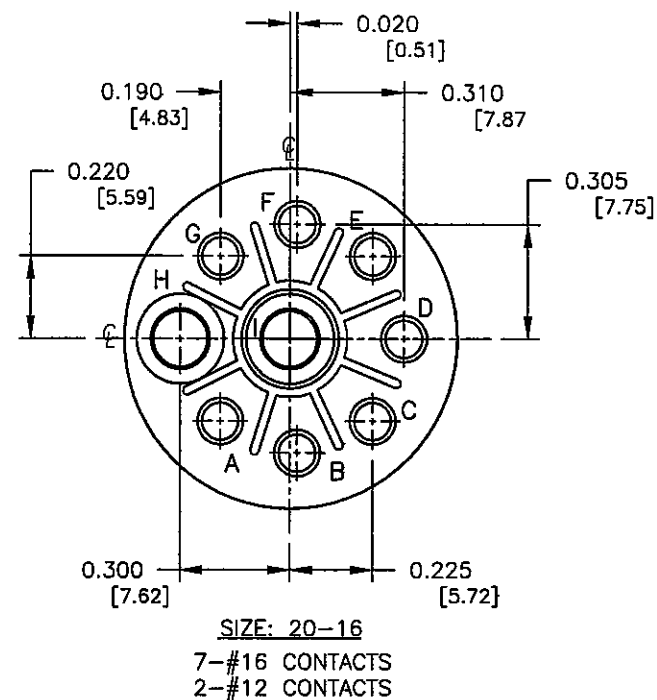
SIZE: 20-7
8-#16 CONTACTS

COPY

FACE VIEWS
(FOR PIN CONTACTS)

PART NUMBER: HPMQSTD

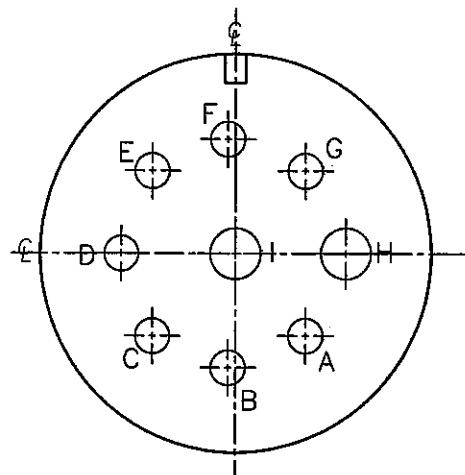
A	RCS	11-12-03	CREATED DRAWING PER ECR #2672
REV.	INIT.	DATE	DESCRIPTION
<small>ALL INFORMATION ILLUSTRATED IS THE PROPERTY OF CONZALL CORPORATION. UNAUTHORIZED DUPLICATION OR DISTRIBUTION OF THIS DOCUMENT IS PROHIBITED.</small>			<small>ORIG. DRAWN BY: DATE:</small> RCS 11-12-03
<small>ALL UNITS ARE IN FEET, INCHES, FRACTION OF INCHES AND DECIMALS.</small>			<small>CHECKED BY:</small> <i>ROL</i> 2/17/05
<small>UNLESS OTHERWISE SPECIFIED TOLERANCES:</small>			<small>APPROVED BY:</small> <i>ROL</i> 2/17/05
<small>3 PLACE DECIMALS ±.005</small>			<small>SCALE SIZE 4 SHEET</small> NTS B 4 OF 8
<small>ANGLES ±1°</small>			<small>TITLE:</small> HOLE PATTERNS MIL-E-QUAL SIZES: 18 & 20
<small>FRACTIONS ±1/16</small>			<small>CUSTOMER:</small>
<small>CRITICAL CHARACTERISTIC FLAG PER SPEC. XXXX</small>			<small>FILE:</small> HPMQSTD4 <small>DIRECTORY:</small> DETAILS <small>PART NUMBER:</small> HPMQSTD
			<small>REV.:</small> A



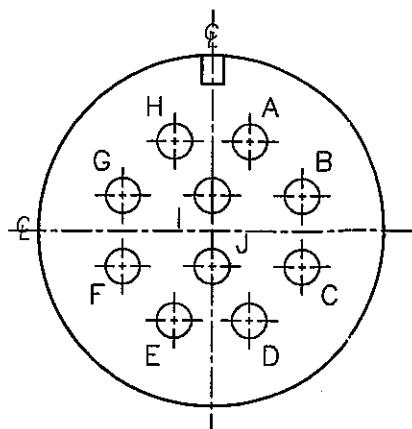
COPY

WIRE VIEWS
 (FOR PIN CONTACTS)

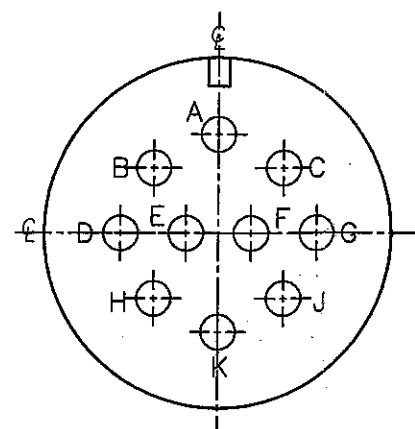
REV.	INIT.	DATE	DESCRIPTION
A	RCS	11-12-03	CREATED DRAWING PER ECR #2672
ALL INFORMATION ILLUSTRATED IS THE PROPERTY OF CONXALL CORPORATION. UNAUTHORIZED DUPLICATION OR DISTRIBUTION OF THIS DOCUMENT IS PROHIBITED.			
ALL UNITS ARE IN FEET, INCHES, FRACTION OF INCHES AND DECIMALS.			
UNLESS OTHERWISE SPECIFIED TOLERANCES:			
3 PLACE DECIMALS ±.005			
ANGLES ±1°			
FRACTIONS ±1/16			
CRITICAL CHARACTERISTIC FLAG PER SPEC. XXXX			
ORIGIN: DRAWN BY: DATE: 11-12-03 CHECKED BY: JAL 2/17/05 APPROVED BY: JMD 2/17/05			601 E. WILDWOOD VILLA PARK, IL 60181 TITLE: HOLE PATTERNS MIL-E-QUAL SIZES: 18 & 20
SCALE	SIZE	SHEET	CUSTOMER:
NTS	B	5 OF 8	
FILE:	DIRECTORY:	PART NUMBER:	REV.:
HPMQSTD5H5	DETAILS	HPMQSTD	A



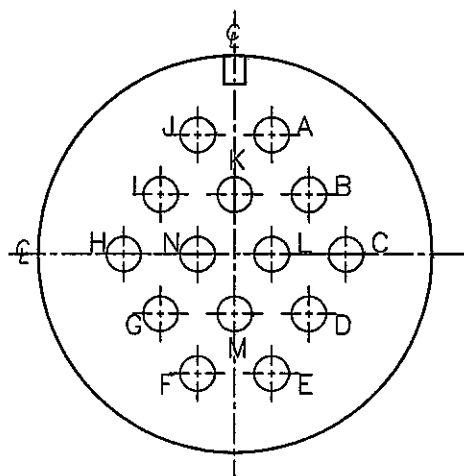
SIZE: 20-16
7-#16 CONTACTS
2-#12 CONTACTS



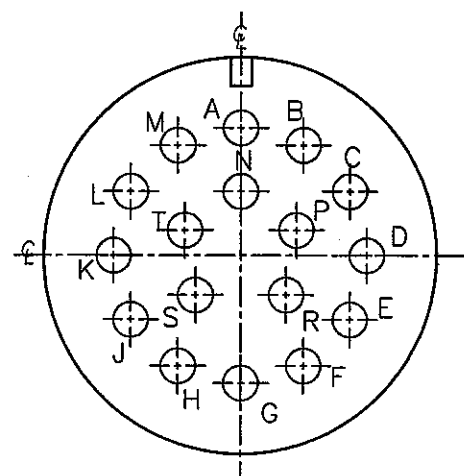
SIZE: 18-1
10-#16 CONTACTS



SIZE: 18-19
10-#16 CONTACTS



SIZE: 20-27
14-#16 CONTACTS



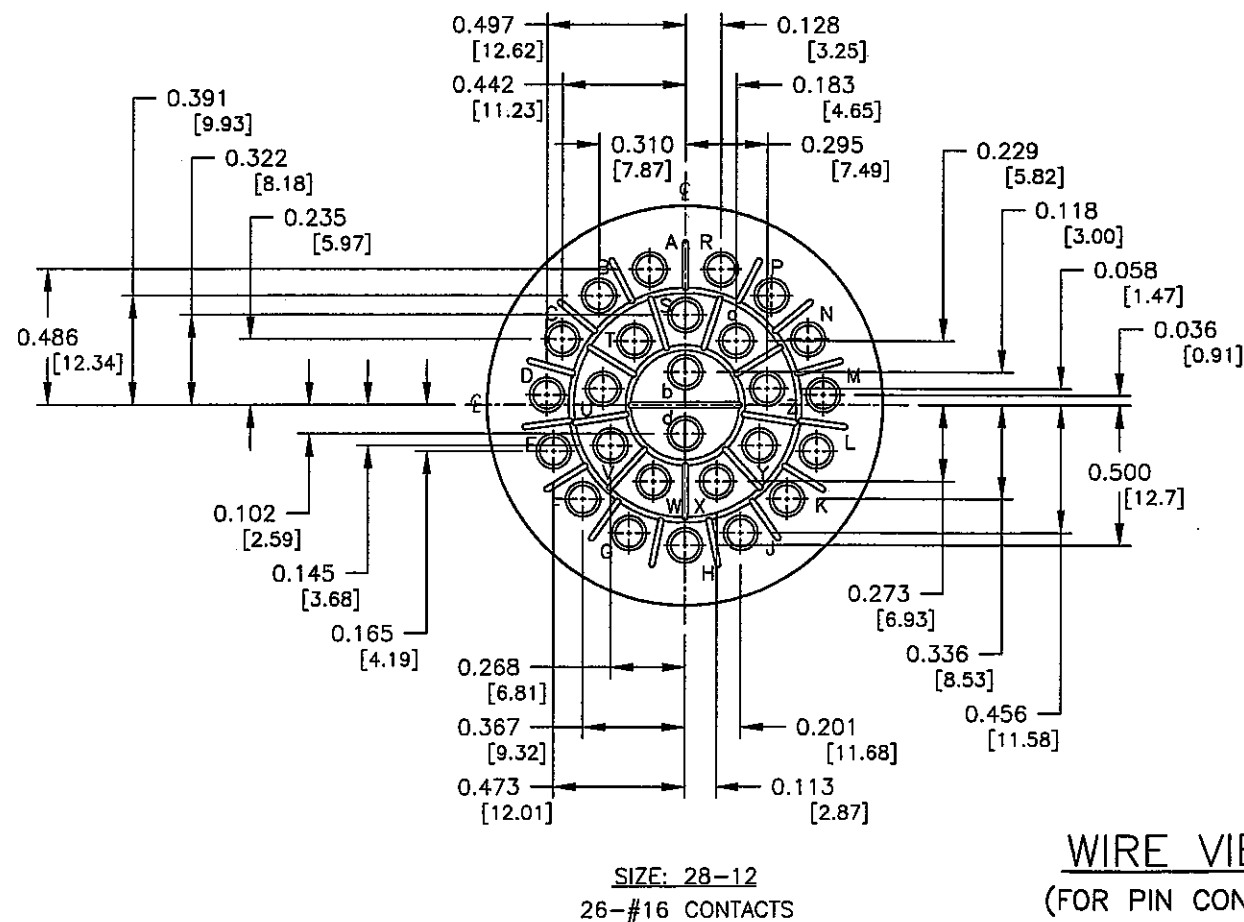
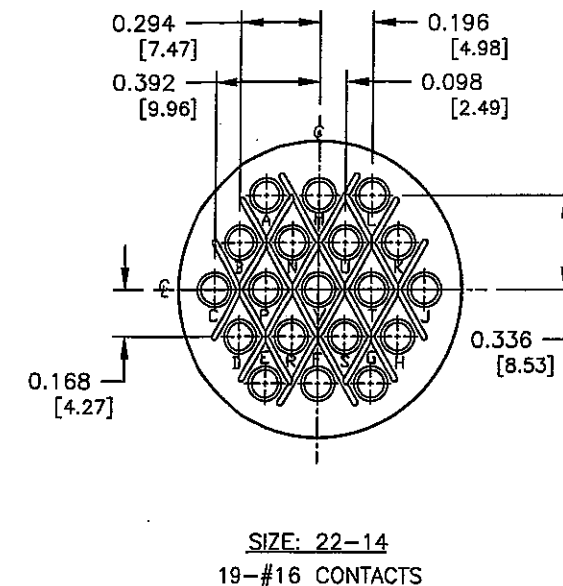
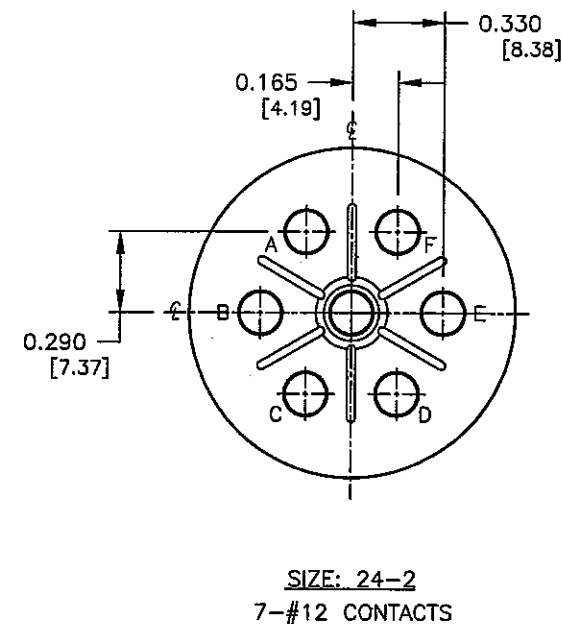
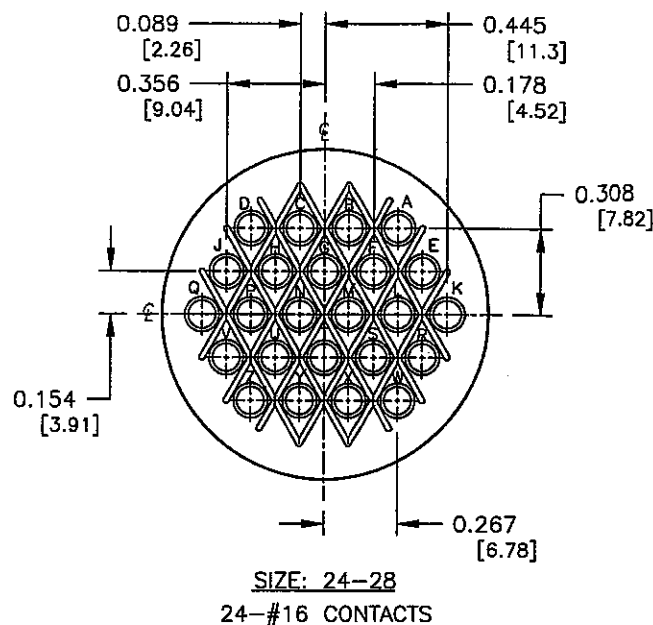
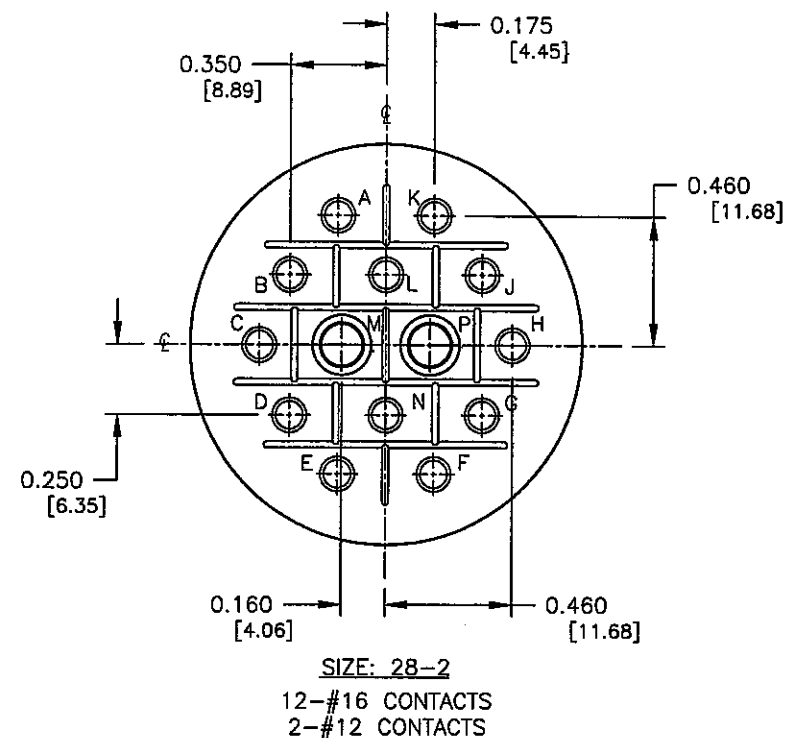
SIZE: 20-29
17-#16 CONTACTS

FACE VIEWS
(FOR PIN CONTACTS)

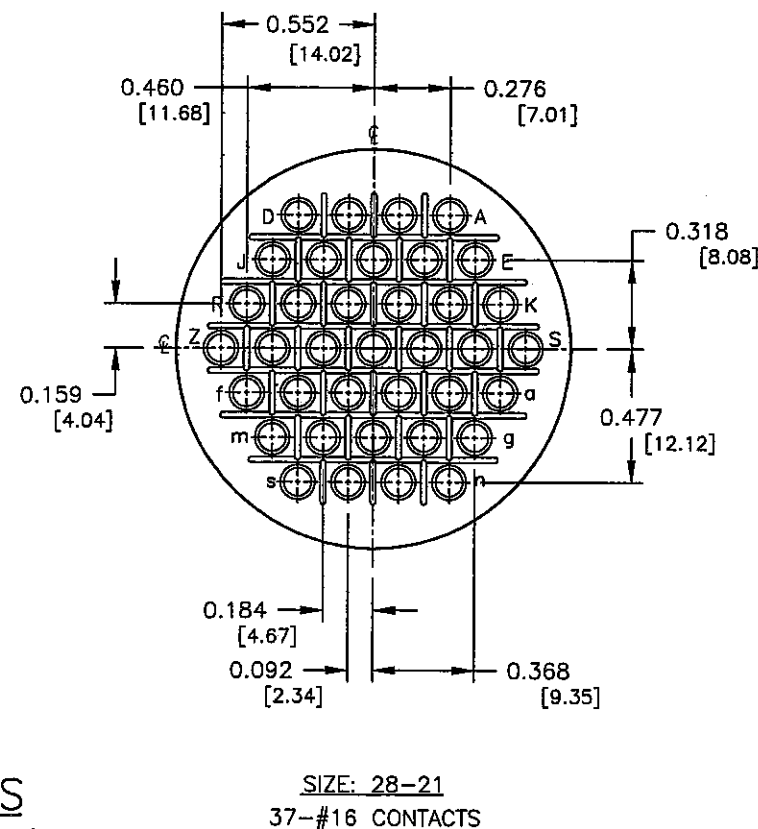
COPY

PART NUMBER: HPMQSTD

A	RCS	11-12-03	CREATED DRAWING PER ECR #2672
REV.	INIT.	DATE	DESCRIPTION
<small>ALL INFORMATION ILLUSTRATED IS THE PROPERTY OF CONXALL CORPORATION. UNAUTHORIZED DUPLICATION OR DISTRIBUTION OF THIS DOCUMENT IS PROHIBITED.</small>			<small>ORIG. DRAWN BY: DATE:</small> RCS 11-12-03
<small>ALL UNITS ARE IN FEET, INCHES, FRACTION OF INCHES AND DECIMALS.</small>			
<small>UNLESS OTHERWISE SPECIFIED TOLERANCES:</small> 3 PLACE DECIMALS ±.005 ANGLES ±1° FRACTIONS ±1/16			
<small>APPROVED BY:</small> <i>gahr</i> 2/17/05			<small>601 E. WILDWOOD VILLA PARK, IL 60181</small>
<small>SCALE</small> NTS B 6 OF 8			<small>TITLE:</small> HOLE PATTERNS MIL-E-QUAL SIZES: 18 & 20
<small>FILE:</small> HPMQSTD5HG			<small>CUSTOMER:</small> PART NUMBER: HPMQSTD
<small>REVISIONS:</small> A			<small>REV.</small> A



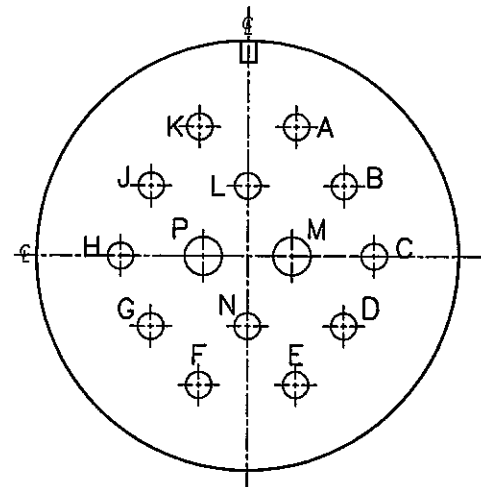
WIRE VIEWS
(FOR PIN CONTACTS)



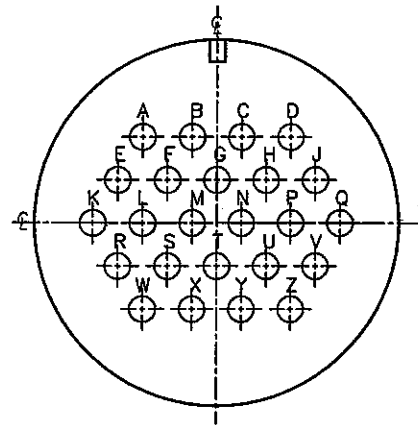
COPY

PART NUMBER: HPMQSTD

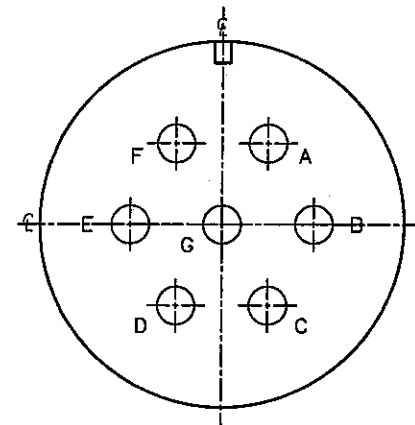
A		RCS	11-12-03	CREATED DRAWING PER ECR #2672	
REV.	INIT.	DATE		DESCRIPTION	
ALL INFORMATION ILLUSTRATED IS THE PROPERTY OF "CONXALL CORPORATION." UNAUTHORIZED DUPLICATION OR DISTRIBUTION OF THIS DOCUMENT IS PROHIBITED.				ORIG. DRAWN BY:	DATE:
				RCS	11-12-03
				CHECKED BY:	
				<i>WOL</i>	<i>2/17/05</i>
ALL UNITS ARE IN FEET, INCHES, FRACTION OF INCHES AND DECIMALS.				APPROVED BY:	
				<i>WOL</i>	<i>2/17/05</i>
UNLESS OTHERWISE SPECIFIED TOLERANCES:				SCALE	SIZE
3 PLACE DECIMALS ±.005				NTS	B
ANGLES ±1°				7 OF 8	
FRACTIONS ±1/16				FILE:	DIRECTORY:
▽ = CRITICAL CHARACTERISTIC FLAG PER SPEC. XXXX				HPMQSTD7	DETAILS
				PART NUMBER:	HPMQSTD
				TITLE: HOLE PATTERNS MIL-E-EQUAL SIZES: 22, 24 & 28	
				CUSTOMER: 601 E. WILDWOOD VILLA PARK, IL 60181	
				REV. A	



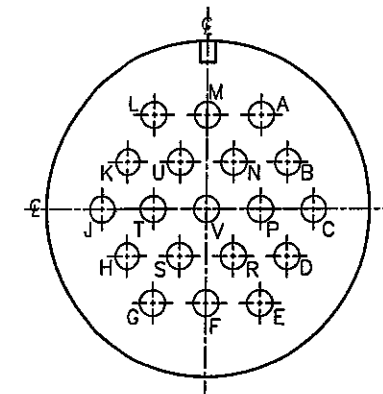
SIZE: 28-2
12-#16 CONTACTS
2-#12 CONTACTS



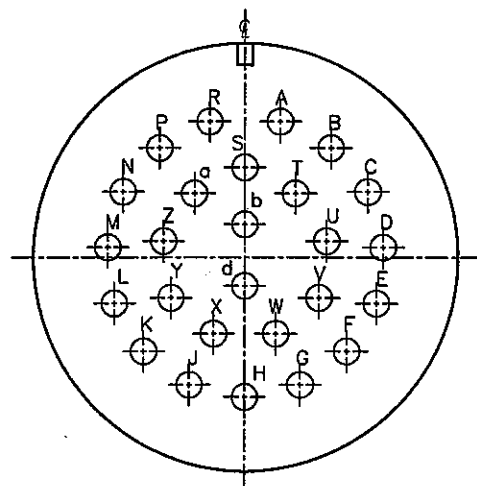
SIZE: 24-28
24-#16 CONTACTS



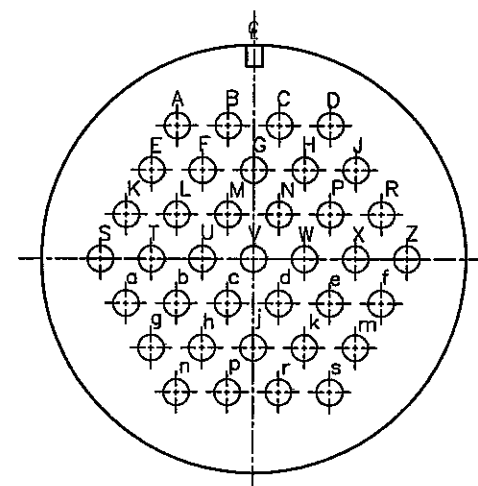
SIZE: 24-2
7-#12 CONTACTS



SIZE: 22-14
19-#16 CONTACTS



SIZE: 28-12
26-#16 CONTACTS



SIZE: 28-21
37-#16 CONTACTS

FACE VIEWS
(FOR PIN CONTACTS)

COPY

PART NUMBER: HPMQSTD

A	RCS	11-12-03	CREATED DRAWING PER ECR #2672
REV.	INIT.	DATE	DESCRIPTION
ALL INFORMATION ILLUSTRATED IS THE PROPERTY OF CONXALL CORPORATION. UNAUTHORIZED DUPLICATION OR DISTRIBUTION OF THIS DOCUMENT IS PROHIBITED.			ORIG. DRAWN BY: DATE: RCS 11-12-03 CHECKED BY: <i>2/17/05</i> APPROVED BY: <i>2/17/05</i>
ALL UNITS ARE IN FEET, INCHES, FRACTION OF INCHES AND DECIMALS. UNLESS OTHERWISE SPECIFIED TOLERANCES: 3 PLACE DECIMALS ±.005 ANGLES ±1/16 FRACTIONS ±1/16 ▽ = CRITICAL CHARACTERISTIC FLAG PER SPEC. XXXX			conxall 601 E. WILDWOOD VILLA PARK, IL 60181 TITLE: HOLE PATTERNS MIL-E-QUAL SIZES: 22, 24 & 28 CUSTOMER:
SCALE	SIZE	SHEET	FILE
NTS	B	8 OF 8	DIRECTORY: HPMQSTD SHE DETAILS
PART NUMBER: HPMQSTD			REV. A

Mouser Electronics

Authorized Distributor

Click to View Pricing, Inventory, Delivery & Lifecycle Information:

[Switchcraft:](#)

[CXC3102A14S1P](#)