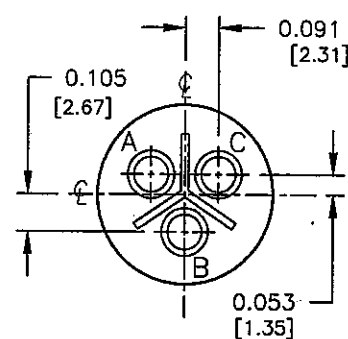
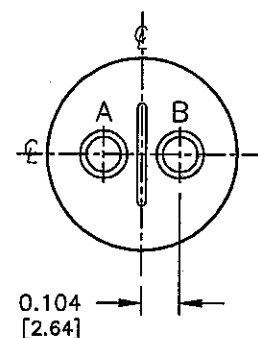


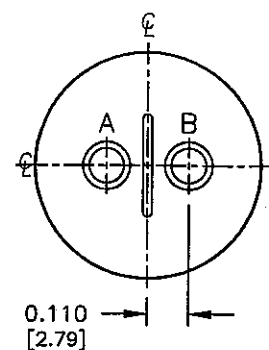
SIZE: 10SL-4  
2-#16 CONTACTS



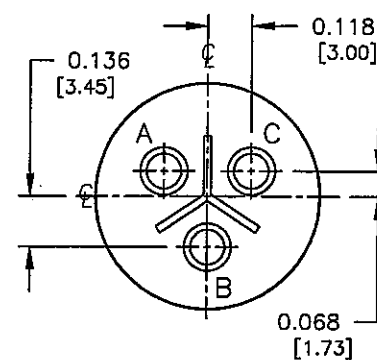
SIZE: 10SL-3  
3-#16 CONTACTS



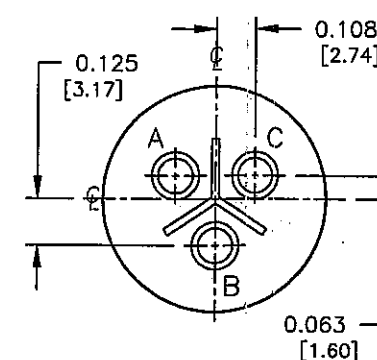
SIZE: 12S-3  
2-#16 CONTACTS



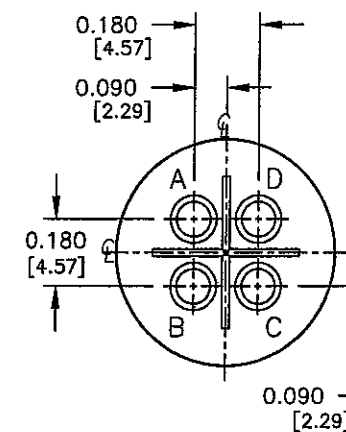
SIZE: 14S-9  
2-#16 CONTACTS



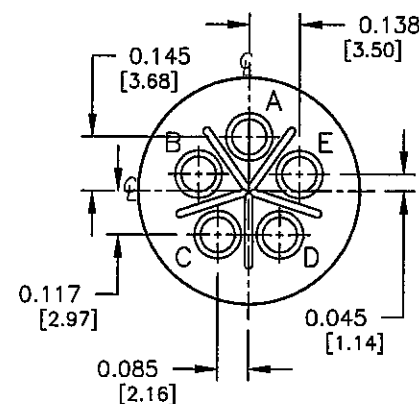
SIZE: 14S-1  
3-#16 CONTACTS



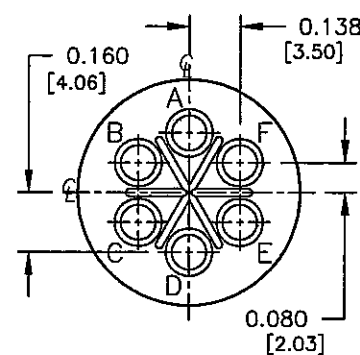
SIZE: 14S-7  
3-#16 CONTACTS



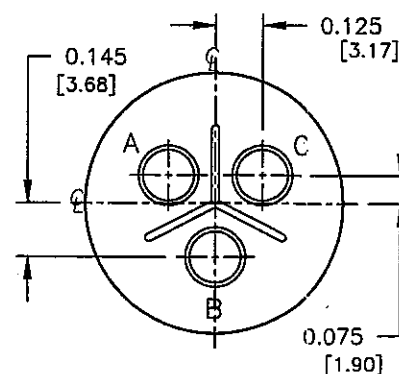
SIZE: 14S-2  
4-#16 CONTACTS



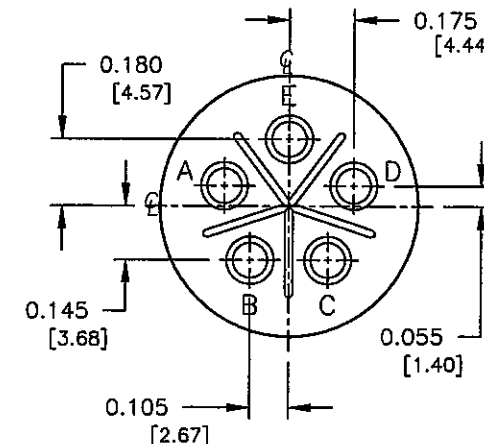
SIZE: 14S-5  
5-#16 CONTACTS



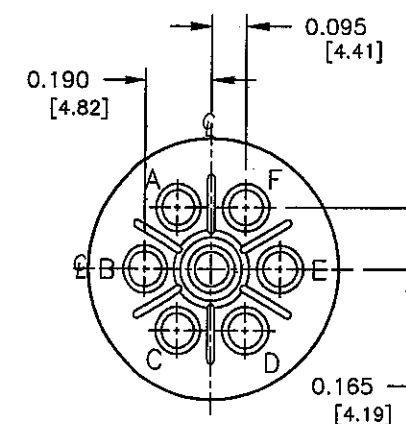
SIZE: 14S-6  
6-#16 CONTACTS



SIZE: 16-10  
3-#12 CONTACTS



SIZE: 16S-8  
5-#16 CONTACTS



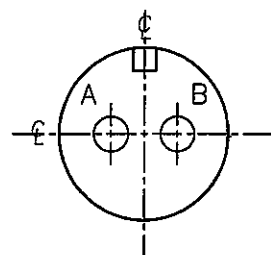
SIZE: 16S-1  
7-#16 CONTACTS

WIRE VIEWS  
(FOR PIN CONTACTS)

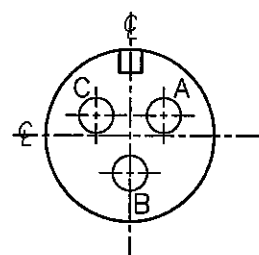
**COPY**

PART NUMBER: HPMQSTD

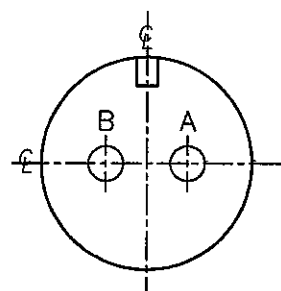
REV. INIT.	DATE	DESCRIPTION
A	11-12-03	CREATED DRAWING PER ECR #2672
ALL INFORMATION ILLUSTRATED IS THE PROPERTY OF CONNELL CORPORATION. UNAUTHORIZED REPRODUCTION OR DISTRIBUTION OF THIS DOCUMENT IS PROHIBITED.		
ALL UNITS ARE IN FEET, INCHES, FRACTION OF INCHES AND DECIMALS.		
UNLESS OTHERWISE SPECIFIED TOLERANCES:		
3 PLACE DECIMALS ±.005		
ANGLES ±1°		
FRACTIONS ±1/16		
CRITICAL CHARACTERISTIC FLAG PER SPEC. XXXX		
FILE:	DIRECTORY:	PART NUMBER:
HPMQSTDH1	DETAILS	HPMQSTD
601 E. WILLOWOOD VILLA PARK, IL 60181 TITLE: HOLE PATTERNS MIL-E-QUAL SIZES: 10SL, 12S, 14S, 16 & 16S CUSTOMER:		
REV. A		



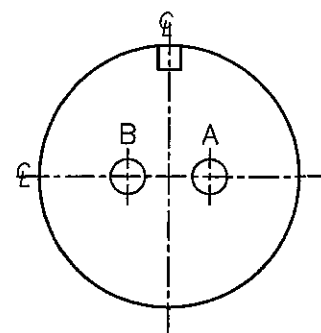
SIZE: 10SL-4  
2-#16 CONTACTS



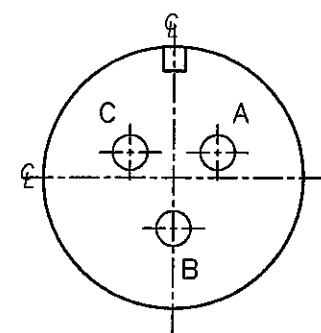
SIZE: 10SL-3  
3-#16 CONTACTS



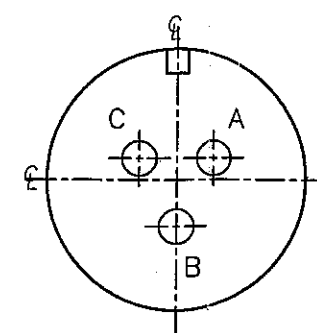
SIZE: 12S-3  
2-#16 CONTACTS



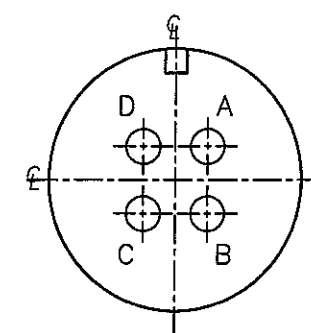
SIZE: 14S-9  
2-#16 CONTACTS



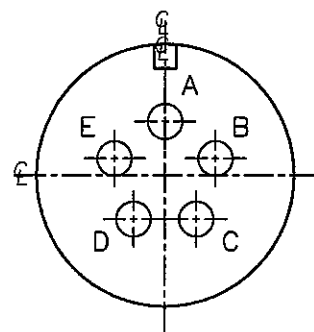
SIZE: 14S-1  
3-#16 CONTACTS



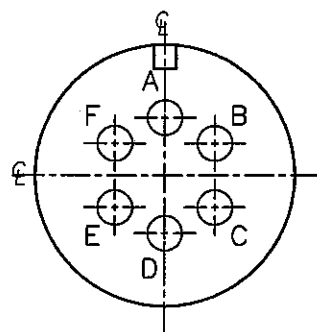
SIZE: 14S-7  
3-#16 CONTACTS



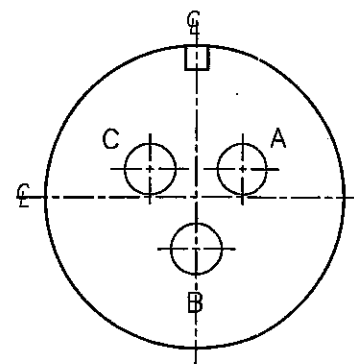
SIZE: 14S-2  
4-#16 CONTACTS



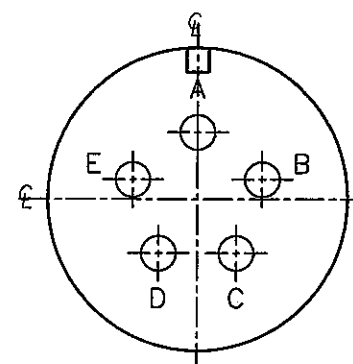
SIZE: 14S-5  
5-#16 CONTACTS



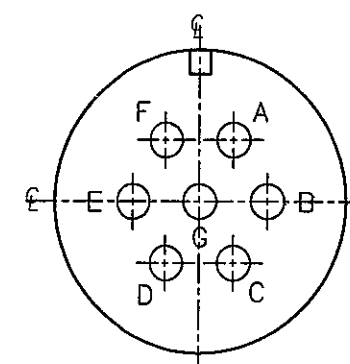
SIZE: 14S-6  
6-#16 CONTACTS



SIZE: 16-10  
3-#12 CONTACTS



SIZE: 16S-8  
5-#16 CONTACTS



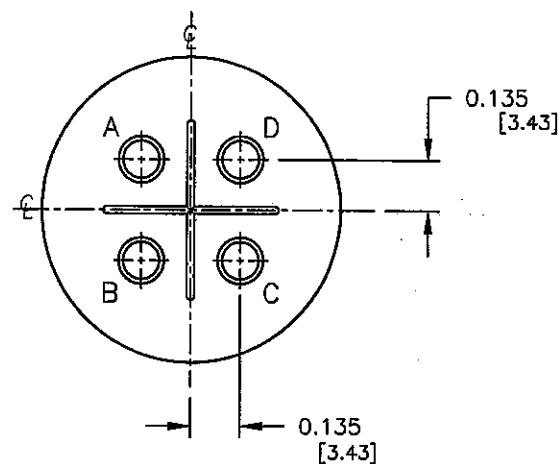
SIZE: 16S-1  
7-#16 CONTACTS

FACE VIEWS  
(FOR PIN CONTACTS)

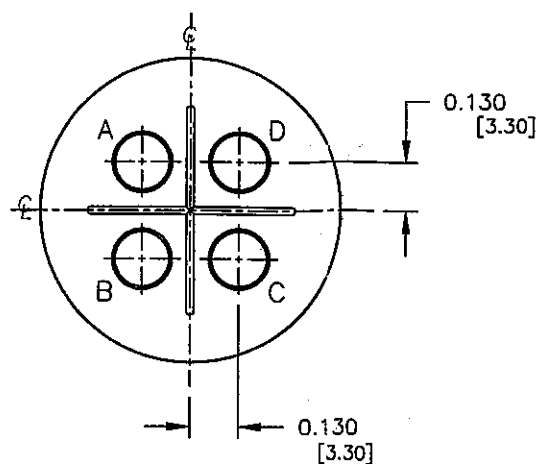
COPY

PART NUMBER: HPMQSTD

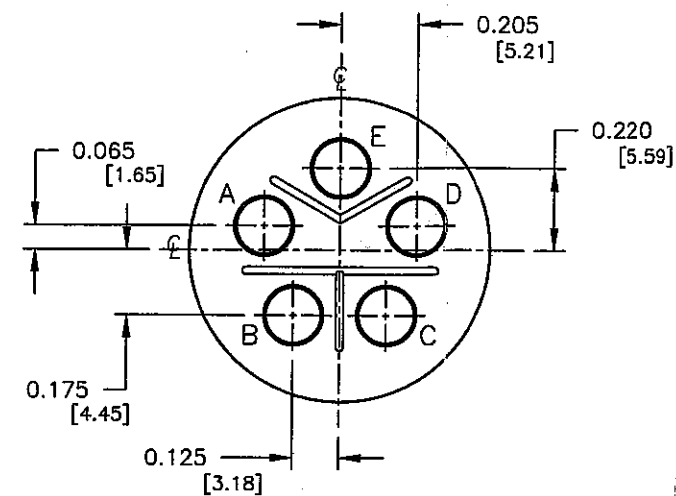
A	RCS	11-12-03	CREATED DRAWING PER ECR #2672
REV.	INIT.	DATE	DESCRIPTION
<small>ALL INFORMATION ILLUSTRATED IS THE PROPERTY OF "CONXALL CORPORATION." UNAUTHORIZED DUPLICATION OR DISTRIBUTION OF THIS DOCUMENT IS PROHIBITED.</small>			<small>ORIG. DRAWN BY: DATE:</small> RCS 11-12-03
<small>ALL UNITS ARE IN FEET, INCHES, FRACTION OF INCHES AND DECIMALS.</small>			<small>CHECKED BY:</small> <i>bol</i> 2/17/05
<small>UNLESS OTHERWISE SPECIFIED TOLERANCES:</small> 3 PLACE DECIMALS ±.005 ANGLES ±1° FRACTIONS ±1/16			<small>APPROVED BY:</small> <i>bol</i> 2/17/05
<small>3 PLACE DECIMALS ±.005</small> <small>ANGLES ±1°</small> <small>FRACTIONS ±1/16</small>			<small>SCALE</small> NTS <small>SIZE</small> B <small>SHEET</small> 2 OF 8
<small>CRITICAL CHARACTERISTIC FLAG PER SPEC. XXXX</small>			<small>FILE:</small> HPMQSTDH2 DETAILS
<small>601 E. WILDWOOD VILLA PARK, IL 60181</small>			<small>TITLE:</small> HOLE PATTERNS MIL-E-QUAL SIZES: 10SL, 12S, 14S, 16 & 16S
<small>PART NUMBER:</small> HPMQSTD			<small>REV.</small> A



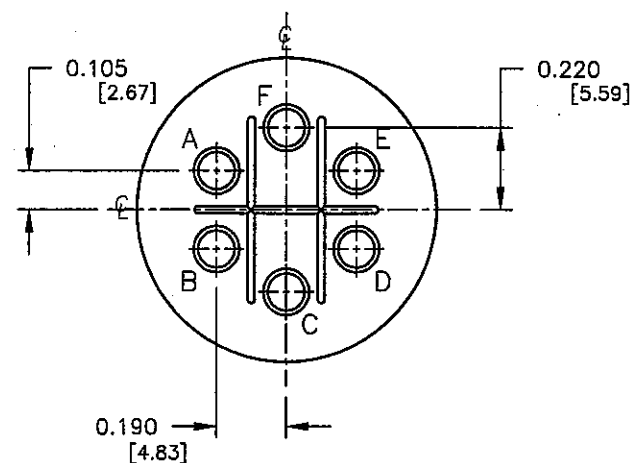
SIZE: 18-4  
4-#16 CONTACTS



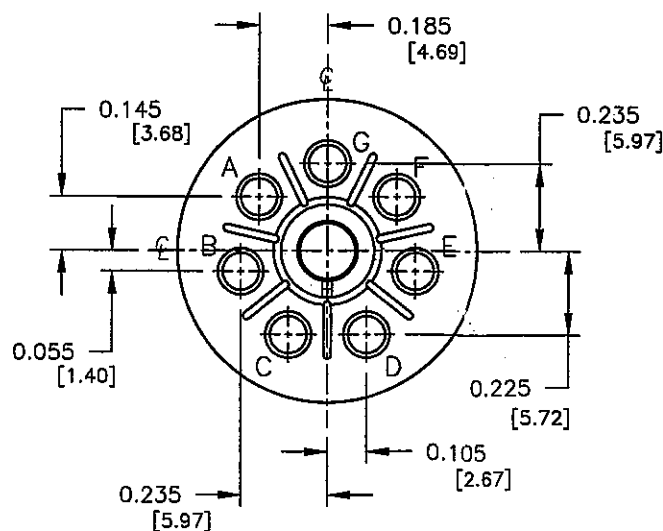
SIZE: 18-10  
4-#12 CONTACTS



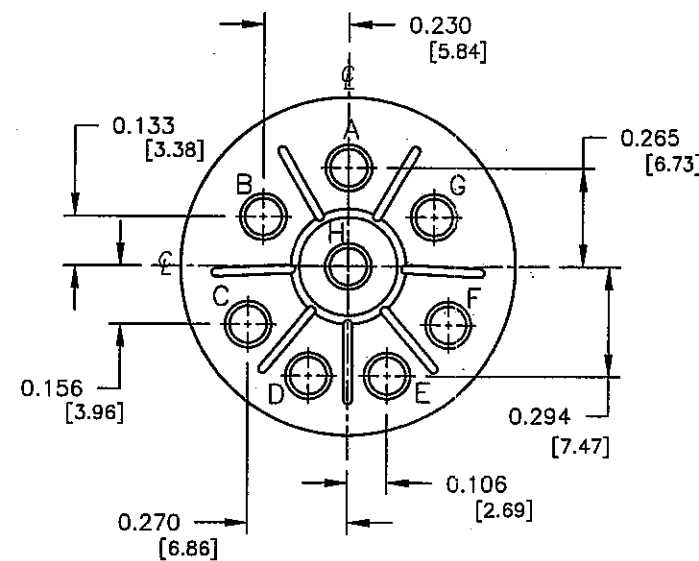
SIZE: 18-11  
5-#12 CONTACTS



SIZE: 18-12  
6-#16 CONTACTS



SIZE: 18-8  
7-#16 CONTACTS  
1-#12 CONTACTS



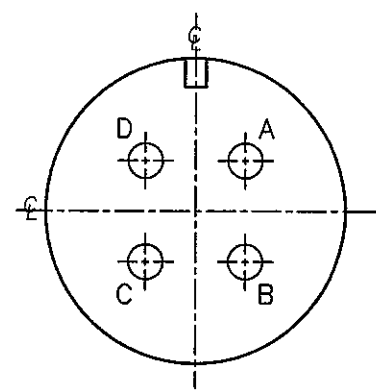
SIZE: 20-7  
8-#16 CONTACTS

COPY

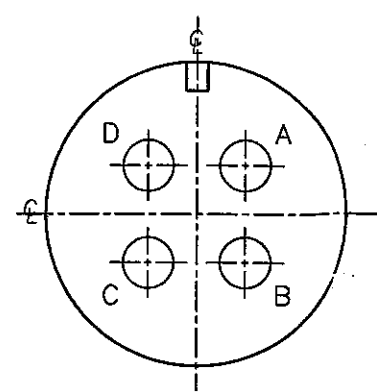
WIRE VIEWS  
(FOR PIN CONTACTS)

PART NUMBER: HPMQSTD

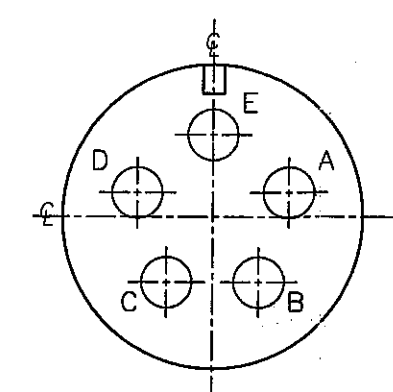
A	RCS	11-12-03	CREATED DRAWING PER ECR #2672
REV.	INIT.	DATE	DESCRIPTION
ALL INFORMATION ILLUSTRATED IS THE PROPERTY OF "CONZALL CORPORATION." UNAUTHORIZED DUPLICATION OR DISTRIBUTION OF THIS DOCUMENT IS PROHIBITED.			ORG. DRAWN BY: RCS DATE: 11-12-03 CHECKED BY: <i>Kahr</i> 2/17/05 APPROVED BY: <i>Kahr</i> 2/17/05 SCALE: NTS SIZE: B SHEET: 3 OF 8 FILE: HPMQSTD DIRECTORY: DETAILS
ALL UNITS ARE IN FEET, INCHES, FRACTION OF INCHES AND DECIMALS. UNLESS OTHERWISE SPECIFIED: 3 PLACE DECIMALS ±.005 ANGLES ±1° FRACTIONS ±1/16 CRITICAL CHARACTERISTIC FLAG PER SPEC. XXXX			601 E. WILDWOOD VILLA PARK, IL 60181 TITLE: HOLE PATTERNS MIL-E-QUAL SIZES: 18 & 20 CUSTOMER: PART NUMBER: HPMQSTD REV. A



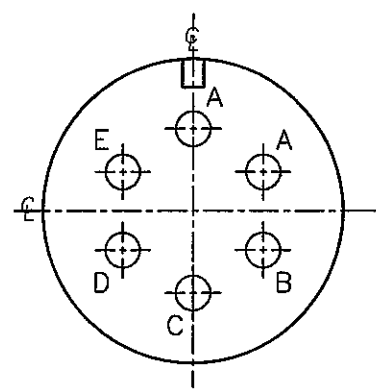
SIZE: 18-4  
4-#16 CONTACTS



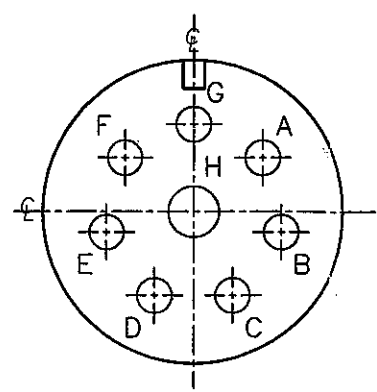
SIZE: 18-10  
4-#12 CONTACTS



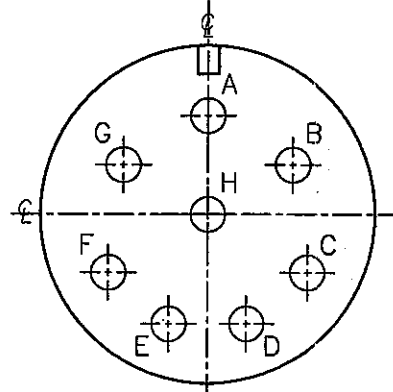
SIZE: 18-11  
5-#12 CONTACTS



SIZE: 18-12  
6-#16 CONTACTS



SIZE: 18-8  
7-#16 CONTACTS  
1-#12 CONTACTS



SIZE: 20-7  
8-#16 CONTACTS

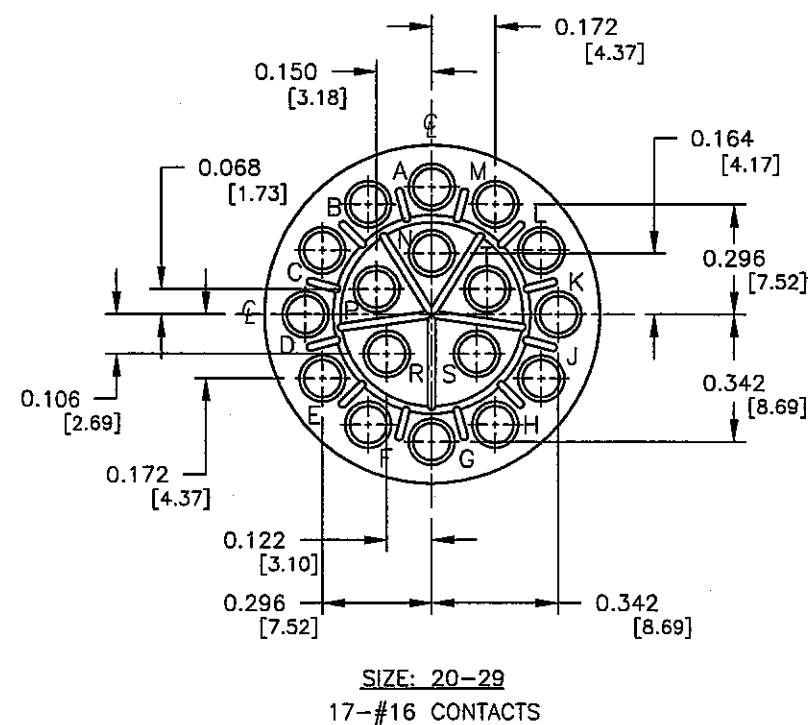
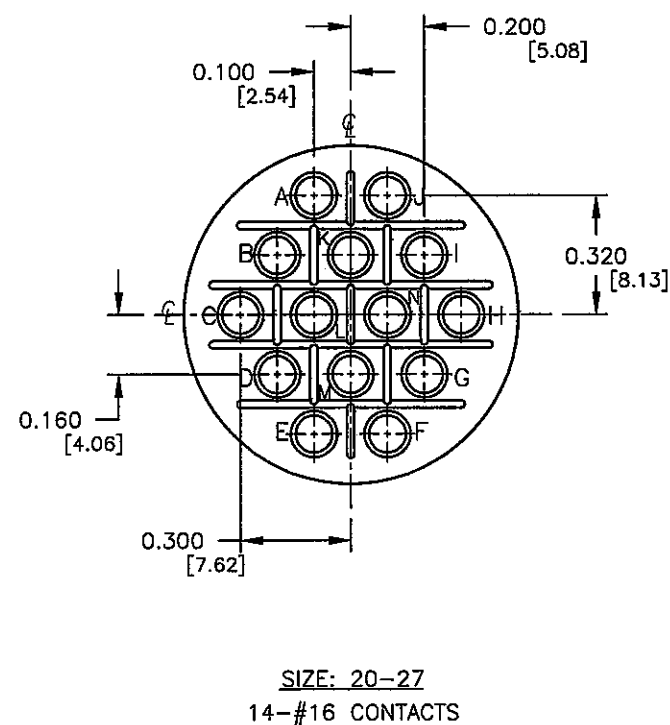
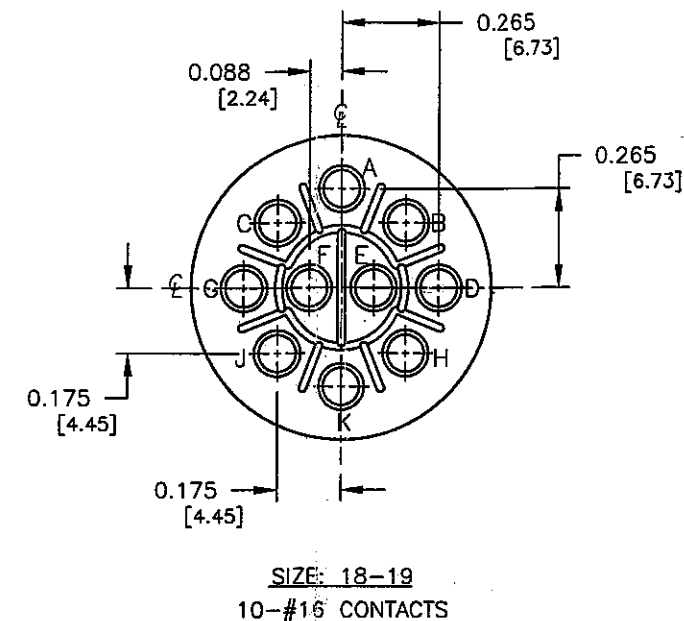
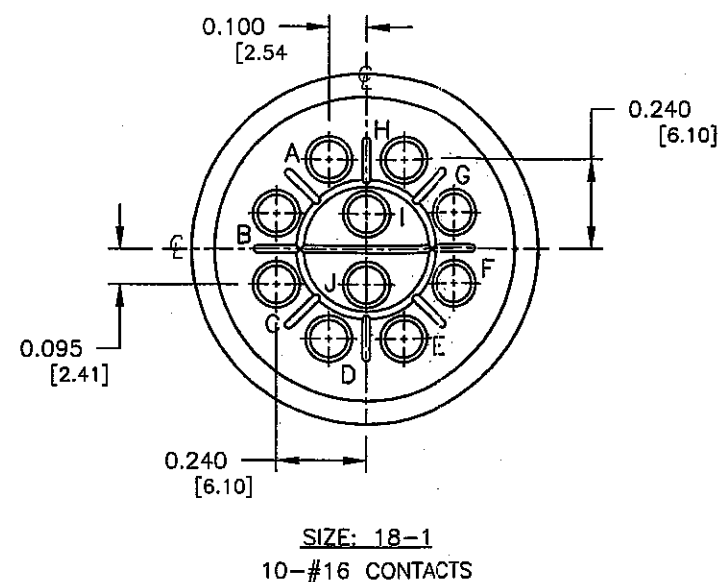
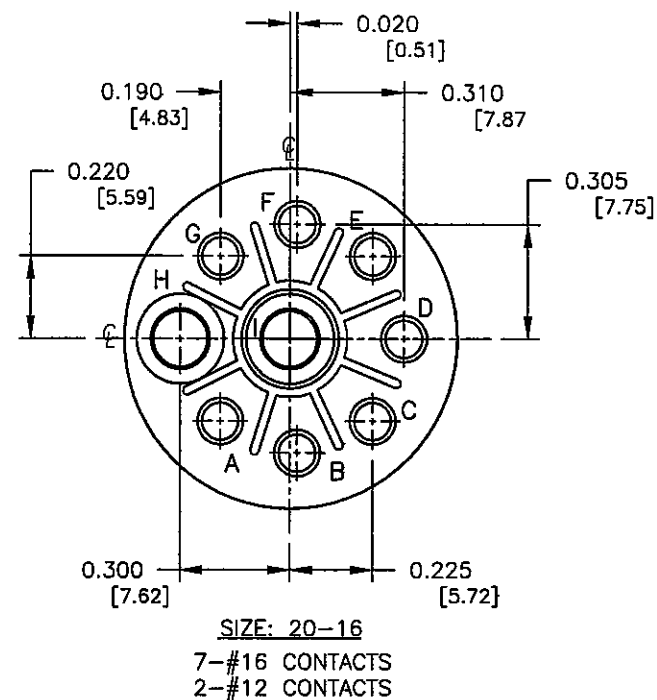
COPY

FACE VIEWS  
(FOR PIN CONTACTS)

PART NUMBER: HPMQSTD


A	RCS	11-12-03	CREATED DRAWING PER ECR #2672
REV.	INIT.	DATE	DESCRIPTION
<small>ALL INFORMATION ILLUSTRATED IS THE PROPERTY OF CONZALL CORPORATION. UNAUTHORIZED DUPLICATION OR DISTRIBUTION OF THIS DOCUMENT IS PROHIBITED.</small>			<small>ORIG. DRAWN BY: DATE:</small> RCS 11-12-03
<small>ALL UNITS ARE IN FEET, INCHES, FRACTION OF INCHES AND DECIMALS.</small>			
<small>UNLESS OTHERWISE SPECIFIED TOLERANCES:</small> 3 PLACE DECIMALS ±.005 ANGLES ±1° FRACTIONS ±1/16			
<small>FILE:</small> HPMQSTD4			<small>601 E. WILDWOOD VILLA PARK, IL 60181</small> <small>TITLE: HOLE PATTERNS MIL-E-QUAL SIZES: 18 &amp; 20</small> <small>CUSTOMER:</small> PART NUMBER: HPMQSTD
<small>REV. A</small>			<small>4 OF 8</small>

MFG. APPROVED BY: DATE: 2/17/05  
 ENG. Jahn

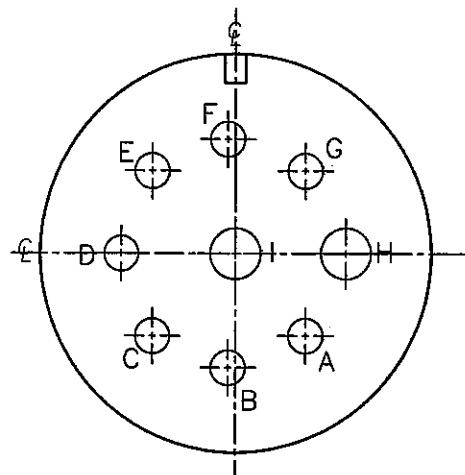


COPY

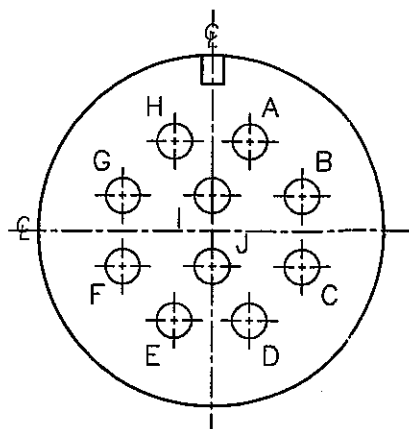
WIRE VIEWS  
 (FOR PIN CONTACTS)

A RCS 11-12-03			CREATED DRAWING PER ECR #2672		
REV. INIT. DATE			DESCRIPTION		
ALL INFORMATION ILLUSTRATED IS THE PROPERTY OF "CONVALL CORPORATION." UNAUTHORIZED DUPLICATION OR DISTRIBUTION OF THIS DOCUMENT IS PROHIBITED.			ORIG. DRAWN BY: DATE:		
			RCS 11-12-03		
ALL UNITS ARE IN FEET, INCHES, FRACTION OF INCHES AND DECIMALS.			CHECKED BY:		601 E. WILDWOOD VILLA PARK, IL 60181
			JAL 2/17/05		
UNLESS OTHERWISE SPECIFIED TOLERANCES: 3 PLACE DECIMALS ±.005 ANGLES ±1° FRACTIONS ±1/16			APPROVED BY:		TITLE: HOLE PATTERNS MIL-E-EQUAL SIZES: 18 & 20
			JMD 2/17/05		
▷ CRITICAL CHARACTERISTIC FLAG PER SPEC. XXXX			SCALE	SIZE	SHEET
			NTS	B	5 OF 8
FILE: HPMQSTDH5			DIRECTORY:		PART NUMBER: HPMQSTD
			DETAILS		
					REV. A

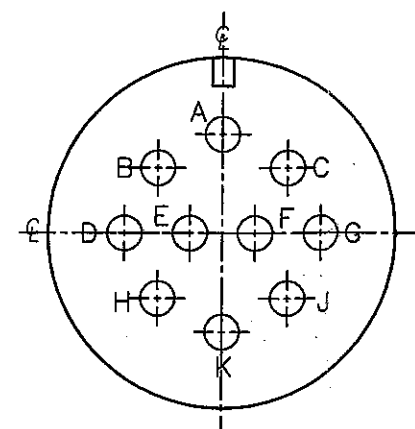
PART NUMBER: HPMQSTD



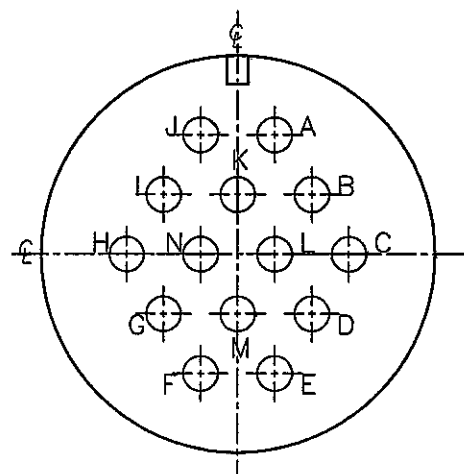
SIZE: 20-16  
7-#16 CONTACTS  
2-#12 CONTACTS



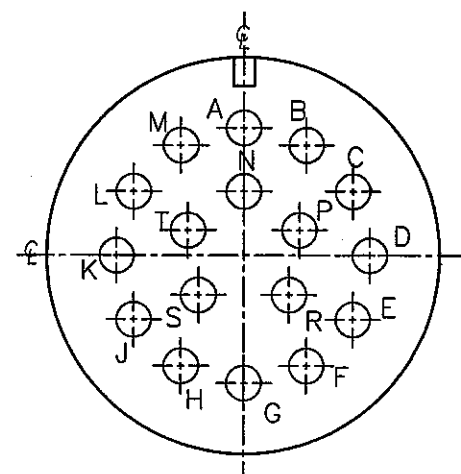
SIZE: 18-1  
10-#16 CONTACTS



SIZE: 18-19  
10-#16 CONTACTS



SIZE: 20-27  
14-#16 CONTACTS




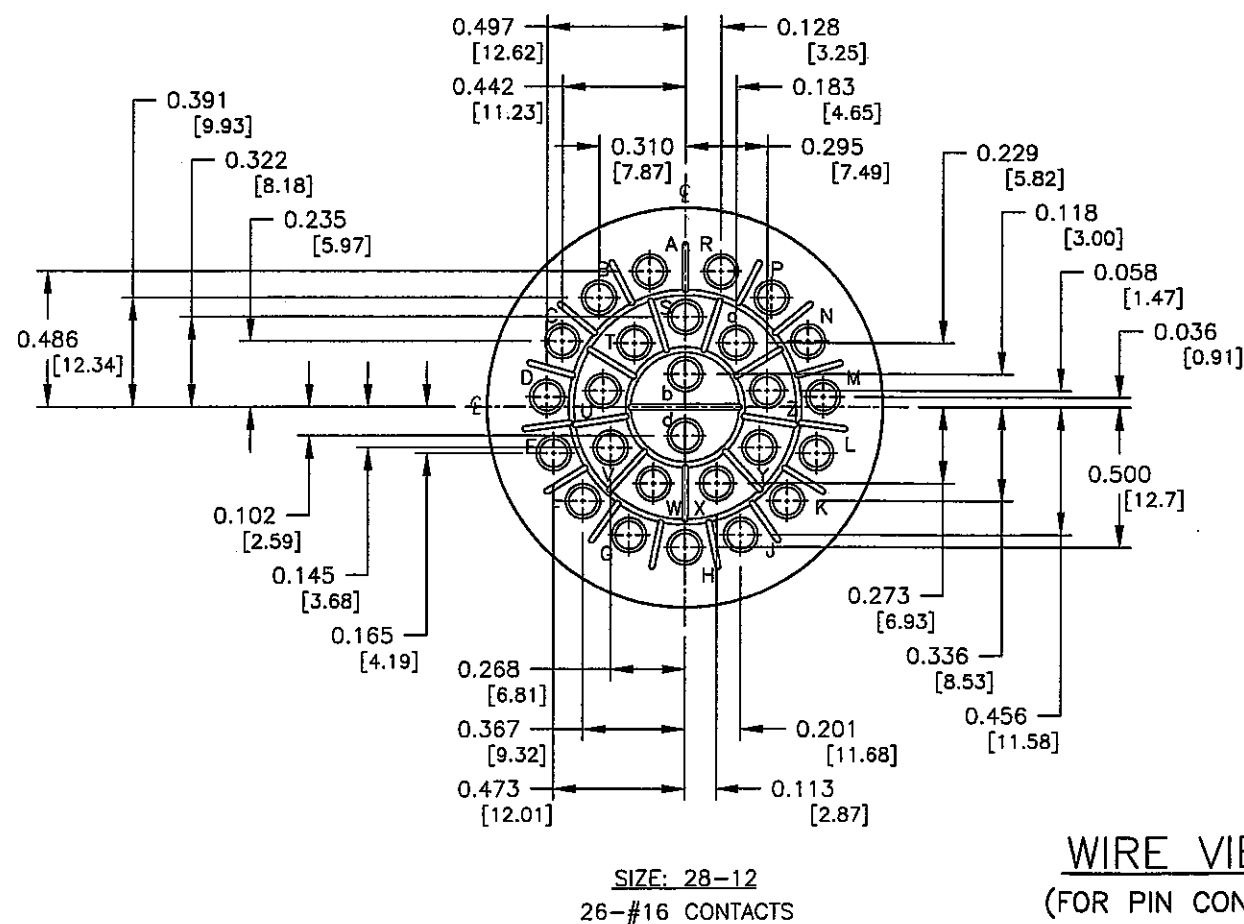
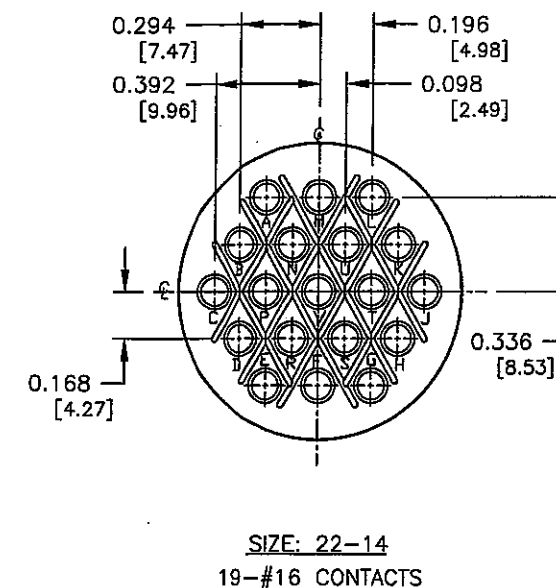
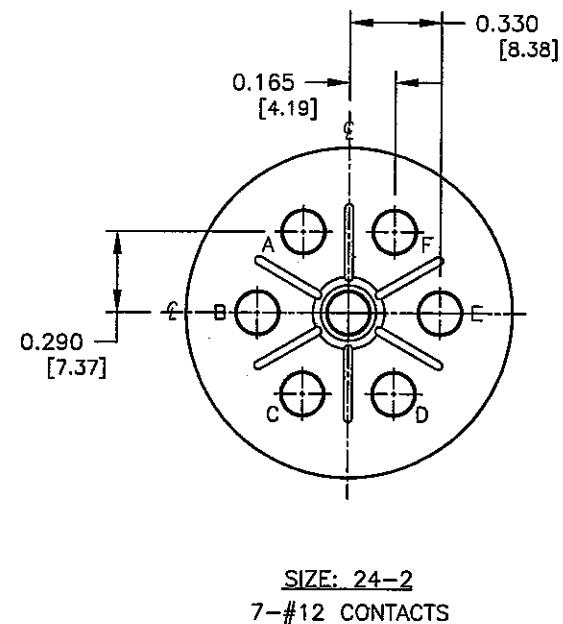
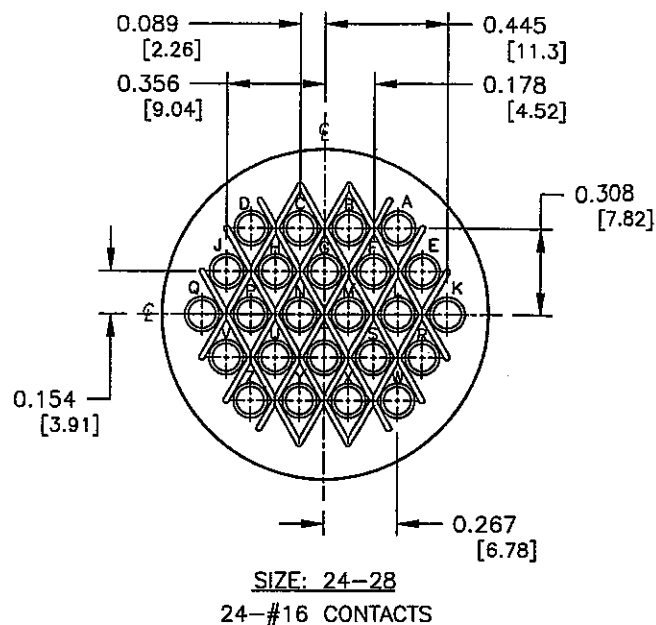
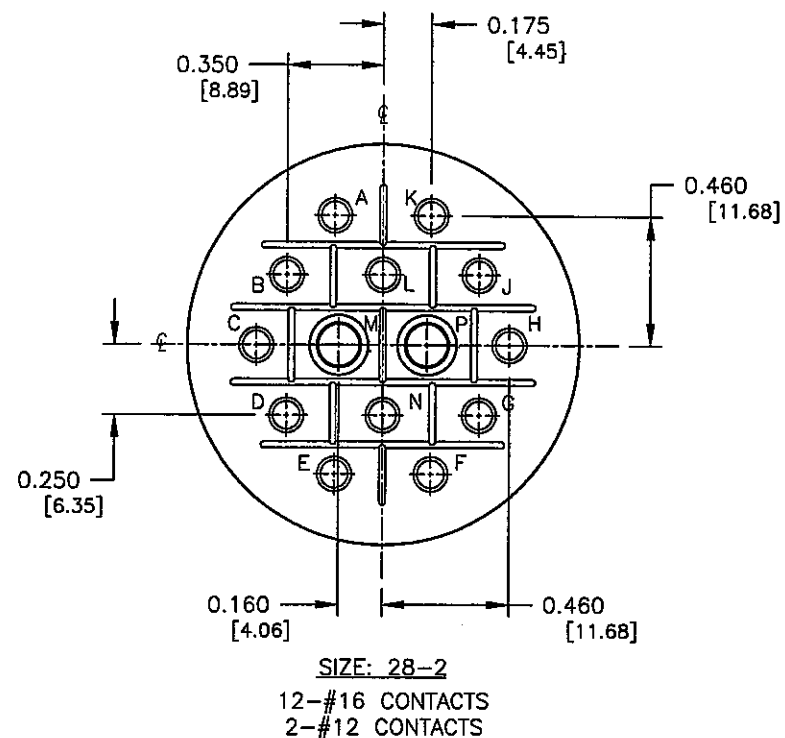
SIZE: 20-29  
17-#16 CONTACTS

FACE VIEWS  
(FOR PIN CONTACTS)

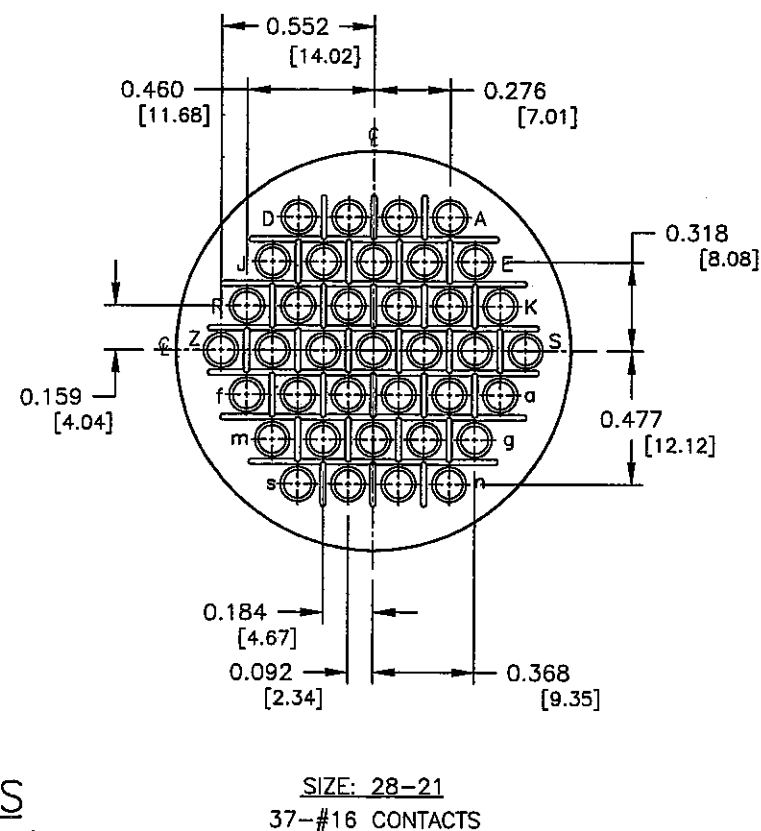
COPY

PART NUMBER: HPMQSTD

A	RCS	11-12-03	CREATED DRAWING PER ECR #2672
REV.	INIT.	DATE	DESCRIPTION
ALL INFORMATION ILLUSTRATED IS THE PROPERTY OF CONXALL CORPORATION. UNAUTHORIZED DUPLICATION OR DISTRIBUTION OF THIS DOCUMENT IS PROHIBITED.			
ALL UNITS ARE IN FEET, INCHES, FRACTION OF INCHES AND DECIMALS. UNLESS OTHERWISE SPECIFIED TOLERANCES: 3 PLACE DECIMALS ±.005 ANGLES ±1° FRACTIONS ±1/16 ▽ = CRITICAL CHARACTERISTIC FLAG PER SPEC. XXXX			ORG. DRAWN BY: DATE: RCS 11-12-03 CHECKED BY: <i>gahr</i> 2/17/05 APPROVED BY: <i>gahr</i> 2/17/05 SCALE: SIZE: SHEET: NTS B 6 OF 8 FILE: DIRECTORY: PART NUMBER: HPMQSTD HPMQSTD5HG DETAILS
601 E. WILDWOOD VILLA PARK, IL 60181 TITLE: HOLE PATTERNS MIL-E-QUAL SIZES: 18 & 20 CUSTOMER:			REV. A



WIRE VIEWS  
(FOR PIN CONTACTS)

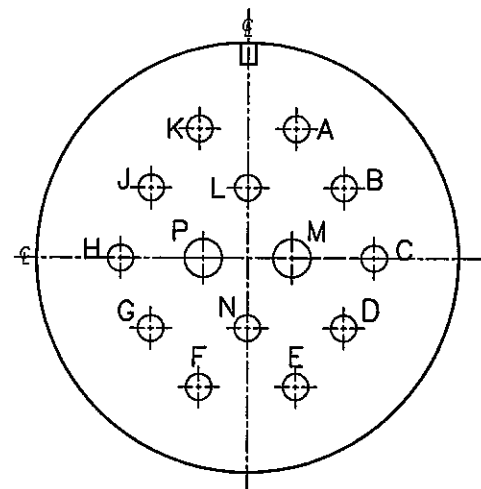


COPY

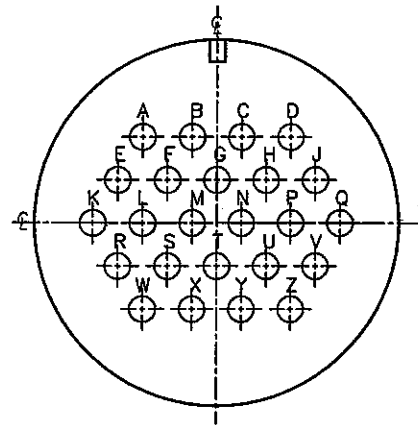
PART NUMBER: HPMQSTD

REV. A	INIT. RCS	DATE 11-12-03	DESCRIPTION CREATED DRAWING PER ECR #2672
ALL INFORMATION ILLUSTRATED IS THE PROPERTY OF CONZALL CORPORATION. UNAUTHORIZED REPRODUCTION OR DISTRIBUTION OF THIS DOCUMENT IS PROHIBITED.			ORIG. DRAWN BY: DATE: RCS 11-12-03
ALL UNITS ARE IN FEET, INCHES, FRACTION OF INCHES AND DECIMALS.			CHECKED BY: <i>John</i> 2/17/05
UNLESS OTHERWISE SPECIFIED TOLERANCES: 3 PLACE DECIMALS ±.005 ANGLES ±1° FRACTIONS ±1/16			APPROVED BY: <i>John</i> 2/17/05
CRITICAL CHARACTERISTIC FLAG PER SPEC. XXXX			SCALE: SIZE 7 OF 8
FILE: HPMQSTD7			DIRECTORY: DETAILS
PART NUMBER: HPMQSTD			CUSTOMER: 601 E. WILDWOOD VILLA PARK, IL 60181
			TITLE: HOLE PATTERNS MIL-E-QUAL SIZES: 22, 24 & 28
			REV. A

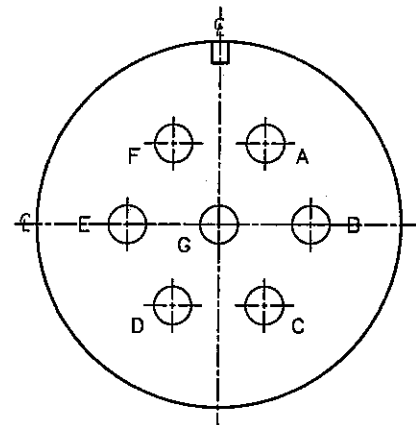
MFG. ENG. APPROVED BY: DATE: 5/14/15



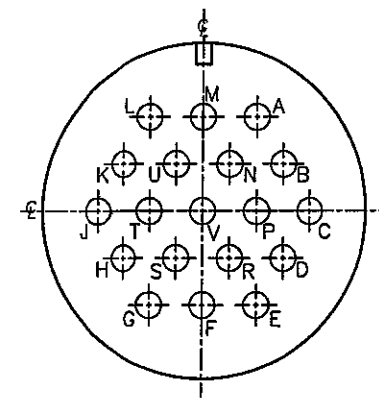
SIZE: 28-2  
12-#16 CONTACTS  
2-#12 CONTACTS



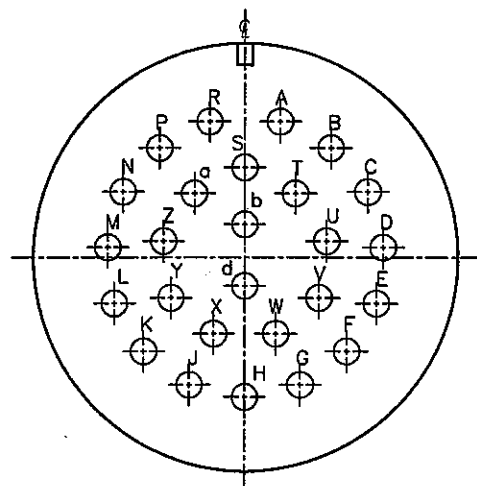
SIZE: 24-28  
24-#16 CONTACTS



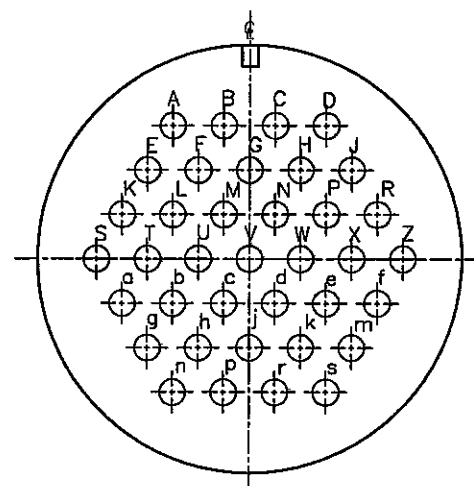
SIZE: 24-2  
7-#12 CONTACTS



SIZE: 22-14  
19-#16 CONTACTS



SIZE: 28-12  
26-#16 CONTACTS



SIZE: 28-21  
37-#16 CONTACTS

FACE VIEWS  
(FOR PIN CONTACTS)

COPY

PART NUMBER: HPMQSTD

A	RCS	11-12-03	CREATED DRAWING PER ECR #2672
REV.	INIT.	DATE	DESCRIPTION
ALL INFORMATION ILLUSTRATED IS THE PROPERTY OF CONXALL CORPORATION. UNAUTHORIZED DUPLICATION OR DISTRIBUTION OF THIS DOCUMENT IS PROHIBITED.			ORIG. DRAWN BY: DATE: RCS 11-12-03
ALL UNITS ARE IN FEET, INCHES, FRACTION OF INCHES AND DECIMALS.			CHECKED BY: <i>2/17/05</i>
UNLESS OTHERWISE SPECIFIED TOLERANCES:			APPROVED BY: <i>2/17/05</i>
3 PLACE DECIMALS ±.005			SCALE: NTS
ANGLES ±1/16			SIZE: B
FRACTIONS ±1/16			SHEET: 8 OF 8
▽ = CRITICAL CHARACTERISTIC FLAG PER SPEC. XXXX			DIRECTORY: HPMQSTD SHE DETAILS
TITLE: HOLE PATTERNS MIL-E-QUAL SIZES: 22, 24 & 28			CUSTOMER: 601 E. WILDWOOD VILLA PARK, IL 60181
PART NUMBER: HPMQSTD			REV. A



# Mouser Electronics

Authorized Distributor

Click to View Pricing, Inventory, Delivery & Lifecycle Information:

[Switchcraft:](#)

[CXS3102A10SL3P](#)