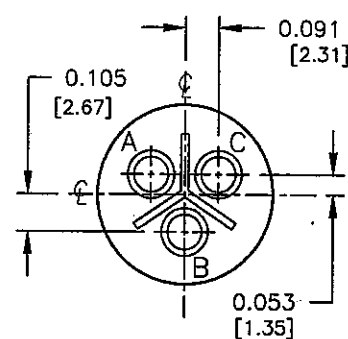
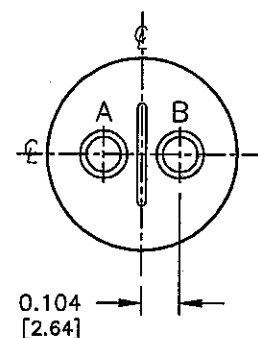


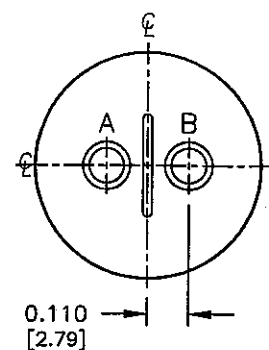
SIZE: 10SL-4
2-#16 CONTACTS



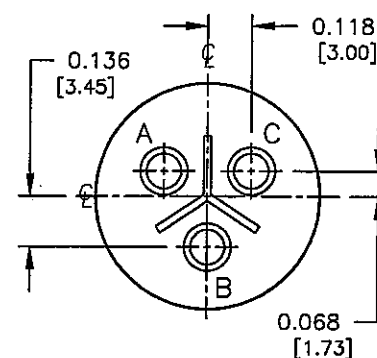
SIZE: 10SL-3
3-#16 CONTACTS



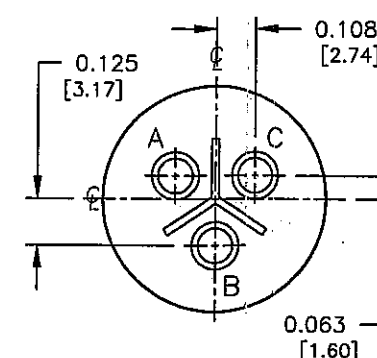
SIZE: 12S-3
2-#16 CONTACTS



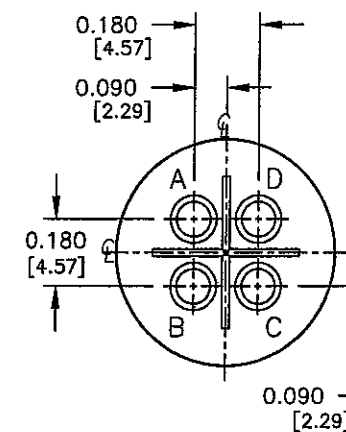
SIZE: 14S-9
2-#16 CONTACTS



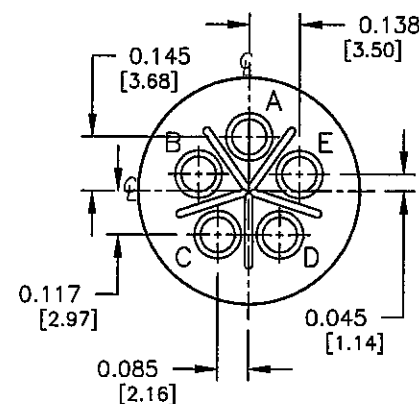
SIZE: 14S-1
3-#16 CONTACTS



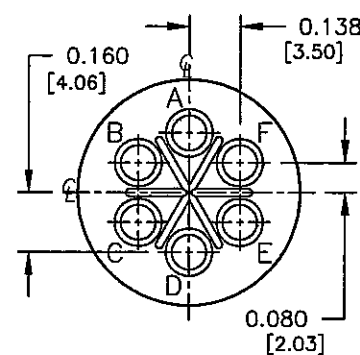
SIZE: 14S-7
3-#16 CONTACTS



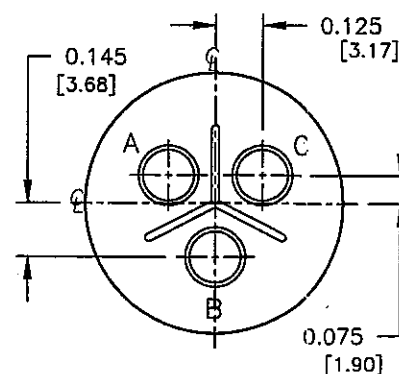
SIZE: 14S-2
4-#16 CONTACTS



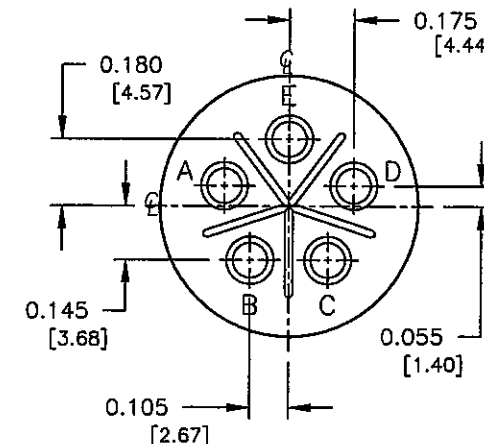
SIZE: 14S-5
5-#16 CONTACTS



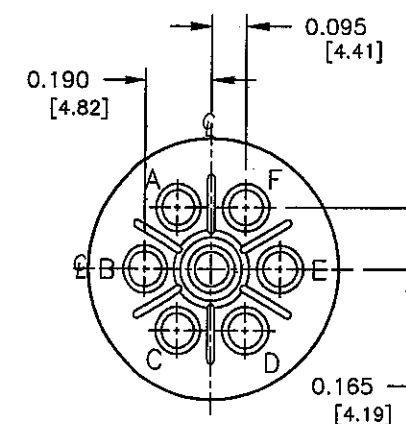
SIZE: 14S-6
6-#16 CONTACTS



SIZE: 16-10
3-#12 CONTACTS



SIZE: 16S-8
5-#16 CONTACTS



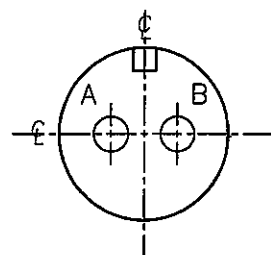
SIZE: 16S-1
7-#16 CONTACTS

WIRE VIEWS
(FOR PIN CONTACTS)

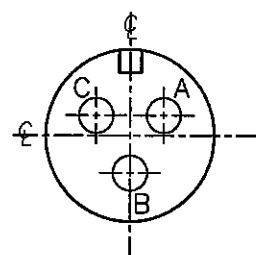
COPY

PART NUMBER: HPMQSTD

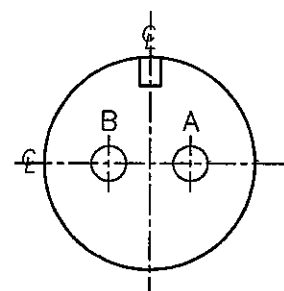
REV. INIT.	DATE	DESCRIPTION
A	11-12-03	CREATED DRAWING PER ECR #2672
ALL INFORMATION ILLUSTRATED IS THE PROPERTY OF CONNELL CORPORATION. UNAUTHORIZED REPRODUCTION OR DISTRIBUTION OF THIS DOCUMENT IS PROHIBITED.		
ALL UNITS ARE IN FEET, INCHES, FRACTION OF INCHES AND DECIMALS.		
UNLESS OTHERWISE SPECIFIED TOLERANCES: 3 PLACE DECIMALS ±.005 ANGLES ±1° FRACTIONS ±1/16		
CRITICAL CHARACTERISTIC FLAG PER SPEC. XXXX		
FILE:	DIRECTORY:	PART NUMBER:
HPMQSTDH1	DETAILS	HPMQSTD
601 E. WILLOWOOD VILLA PARK, IL 60181 TITLE: HOLE PATTERNS MIL-E-QUAL SIZES: 10SL, 12S, 14S, 16 & 16S CUSTOMER:		
11-12-03 2/17/05 2/17/05		1 OF 8 A



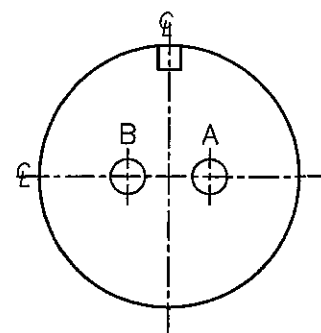
SIZE: 10SL-4
2-#16 CONTACTS



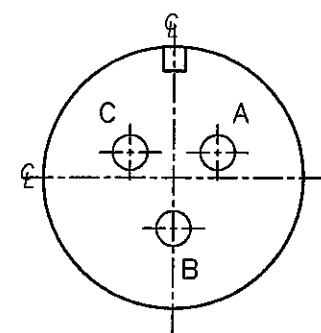
SIZE: 10SL-3
3-#16 CONTACTS



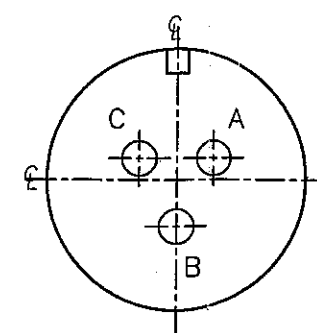
SIZE: 12S-3
2-#16 CONTACTS



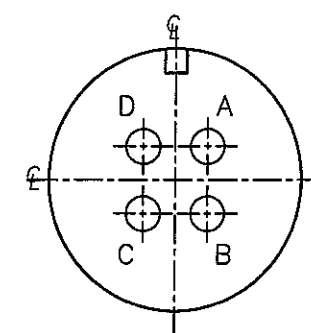
SIZE: 14S-9
2-#16 CONTACTS



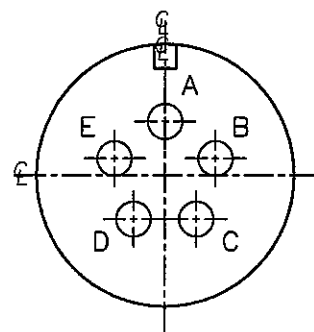
SIZE: 14S-1
3-#16 CONTACTS



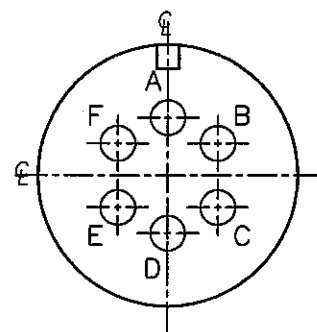
SIZE: 14S-7
3-#16 CONTACTS



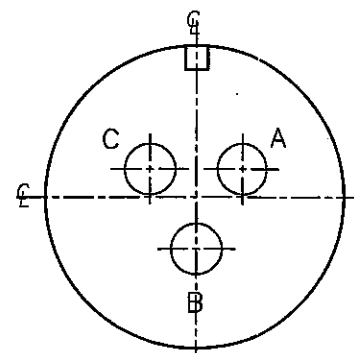
SIZE: 14S-2
4-#16 CONTACTS



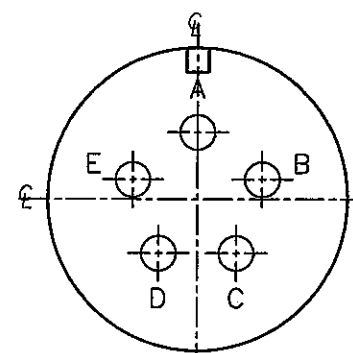
SIZE: 14S-5
5-#16 CONTACTS



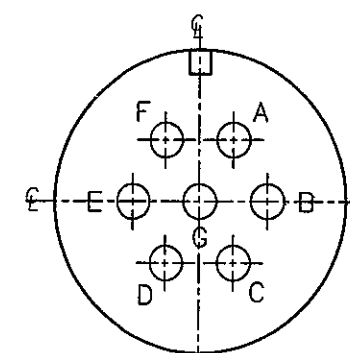
SIZE: 14S-6
6-#16 CONTACTS



SIZE: 16-10
3-#12 CONTACTS



SIZE: 16S-8
5-#16 CONTACTS



SIZE: 16S-1
7-#16 CONTACTS

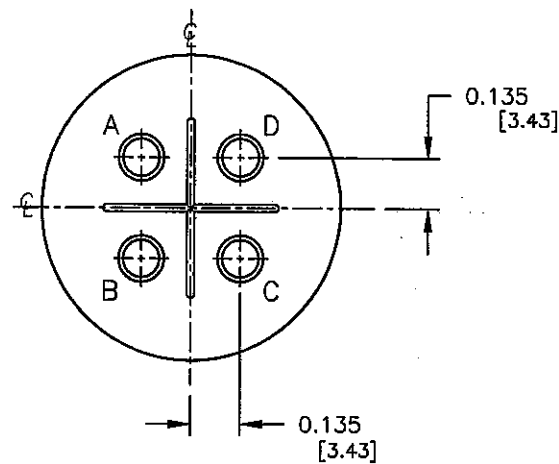
FACE VIEWS
(FOR PIN CONTACTS)

COPY

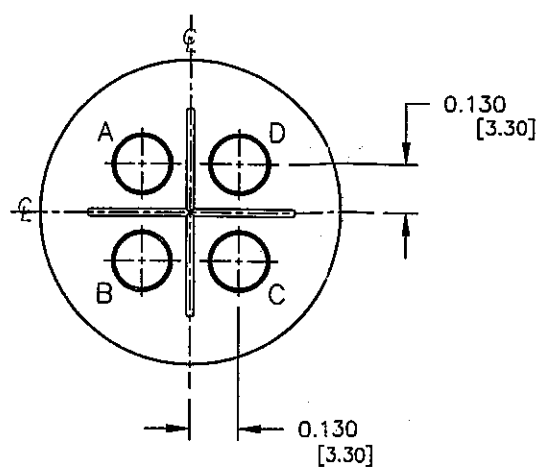
PART NUMBER: HPMQSTD

A	RCS	11-12-03	CREATED DRAWING PER ECR #2672
REV.	INIT.	DATE	DESCRIPTION
<small>ALL INFORMATION ILLUSTRATED IS THE PROPERTY OF "CONXALL CORPORATION." UNAUTHORIZED DUPLICATION OR DISTRIBUTION OF THIS DOCUMENT IS PROHIBITED.</small>			<small>ORIG. DRAWN BY: DATE:</small> RCS 11-12-03
<small>ALL UNITS ARE IN FEET, INCHES, FRACTION OF INCHES AND DECIMALS.</small>			<small>CHECKED BY:</small> <i>bol</i> 2/17/05
<small>UNLESS OTHERWISE SPECIFIED TOLERANCES:</small> 3 PLACE DECIMALS ±.005 ANGLES ±1° FRACTIONS ±1/16			<small>APPROVED BY:</small> <i>bol</i> 2/17/05
<small>3 PLACE DECIMALS ±.005</small> <small>ANGLES ±1°</small> <small>FRACTIONS ±1/16</small>			<small>SCALE</small> NTS <small>SIZE</small> B <small>SHEET</small> 2 OF 8
<small>CRITICAL CHARACTERISTIC FLAG PER SPEC. XXXX</small>			<small>FILE:</small> HPMQSTDH2 <small>DIRECTORY:</small> DETAILS
<small>PART NUMBER:</small> HPMQSTD			<small>REV.:</small> A

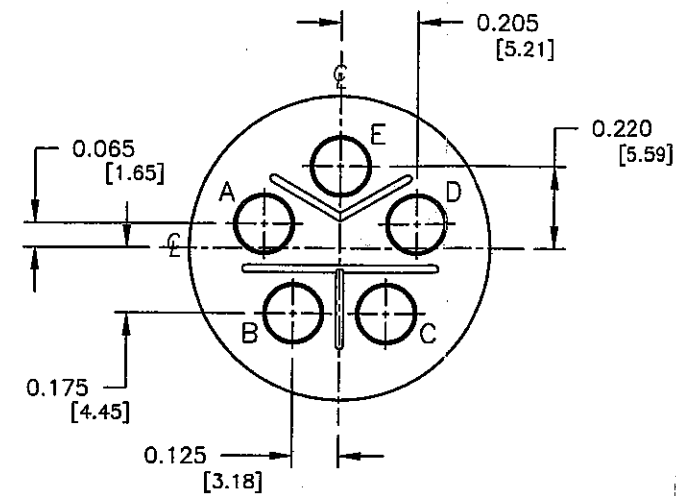
Conxall
601 E. WILDWOOD VILLA PARK, IL 60181
TITLE: HOLE PATTERNS
MIL-E-QUAL SIZES:
10SL, 12S, 14S, 16 & 16S
CUSTOMER:



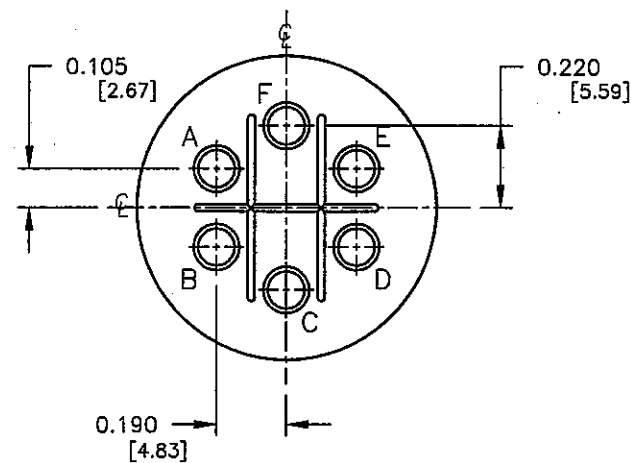
SIZE: 18-4
4-#16 CONTACTS



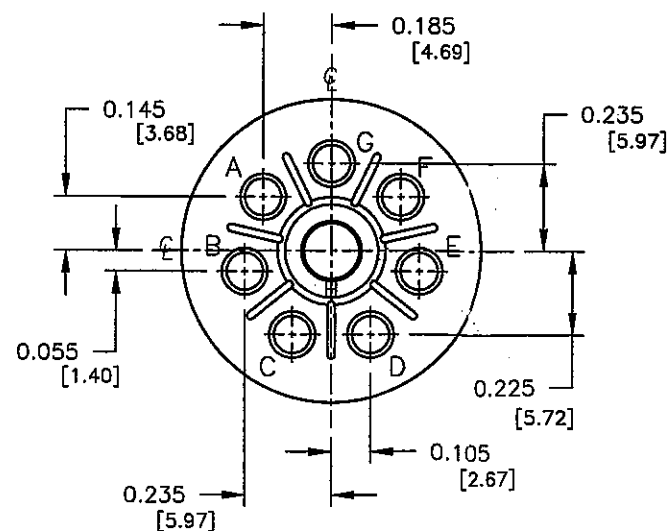
SIZE: 18-10
4-#12 CONTACTS



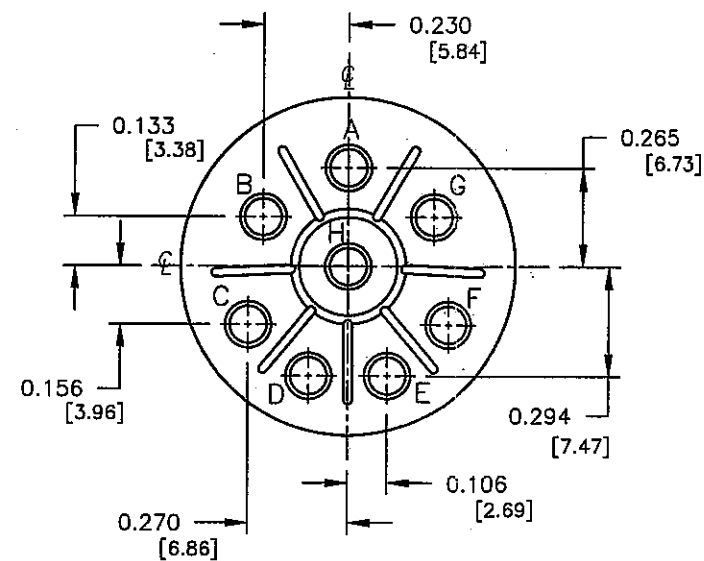
SIZE: 18-11
5-#12 CONTACTS



SIZE: 18-12
6-#16 CONTACTS



SIZE: 18-8
7-#16 CONTACTS
1-#12 CONTACTS

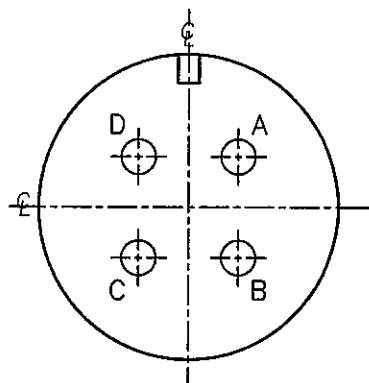


SIZE: 20-7
8-#16 CONTACTS

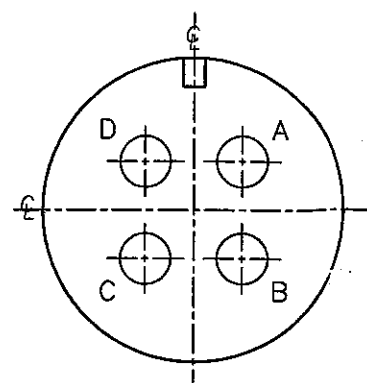
COPY

WIRE VIEWS
(FOR PIN CONTACTS)

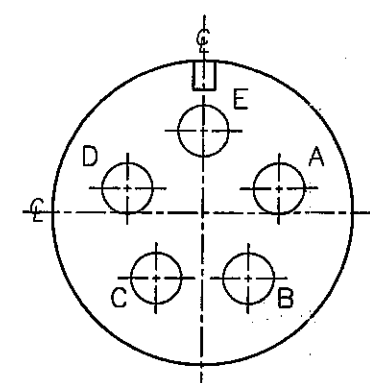
A	RCS	11-12-03	CREATED DRAWING PER ECR #2672
REV.	INIT.	DATE	DESCRIPTION
ALL INFORMATION ILLUSTRATED IS THE PROPERTY OF "CONZALL CORPORATION." UNAUTHORIZED DUPLICATION OR DISTRIBUTION OF THIS DOCUMENT IS PROHIBITED.			ORG. DRAWN BY: RCS DATE: 11-12-03 CHECKED BY: <i>Kahr</i> 2/17/05 APPROVED BY: <i>Kahr</i> 2/17/05 SCALE: NTS SIZE: B SHEET: 3 OF 8 FILE: HPMQSTD DIRECTORY: DETAILS
ALL UNITS ARE IN FEET, INCHES, FRACTION OF INCHES AND DECIMALS. UNLESS OTHERWISE SPECIFIED: 3 PLACE DECIMALS ±.005 ANGLES ±1° FRACTIONS ±1/16 CRITICAL CHARACTERISTIC FLAG PER SPEC. XXXX			601 E. WILDWOOD VILLA PARK, IL 60181 TITLE: HOLE PATTERNS MIL-E-QUAL SIZES: 18 & 20 CUSTOMER: PART NUMBER: HPMQSTD REV. A



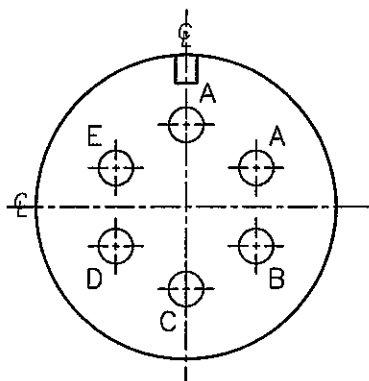
SIZE: 18-4
4-#16 CONTACTS



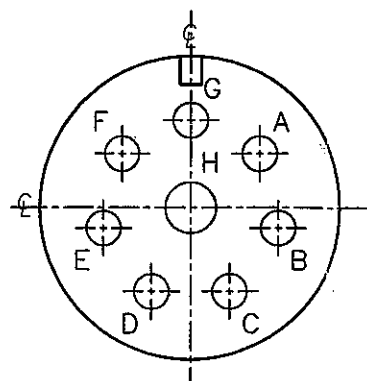
SIZE: 18-10
4-#12 CONTACTS



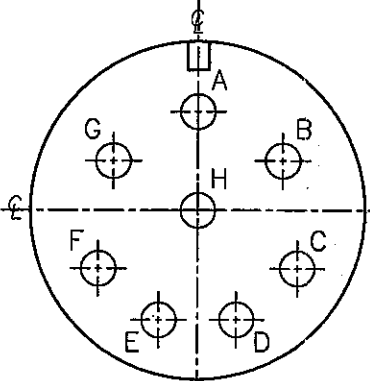
SIZE: 18-11
5-#12 CONTACTS



SIZE: 18-12
6-#16 CONTACTS



SIZE: 18-8
7-#16 CONTACTS
1-#12 CONTACTS



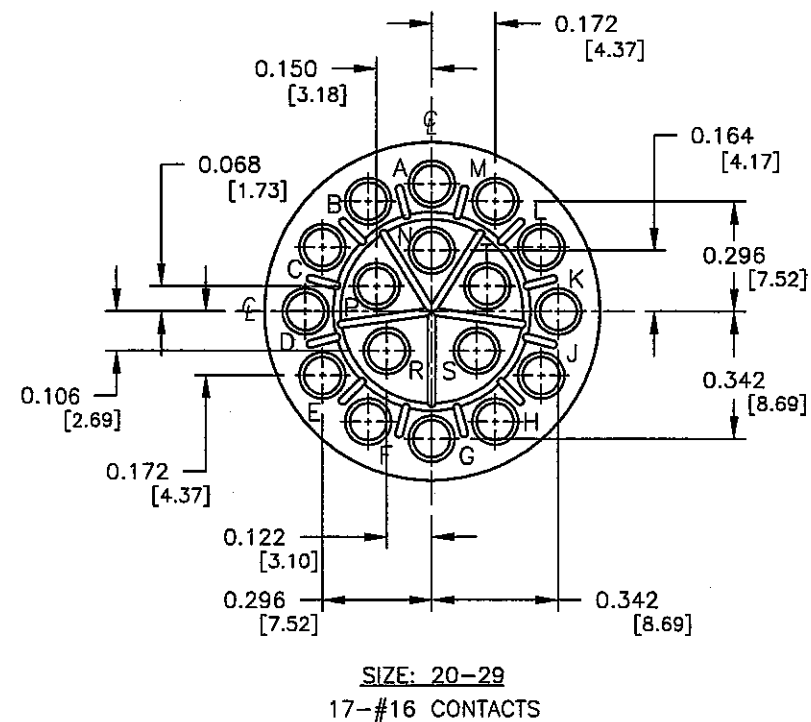
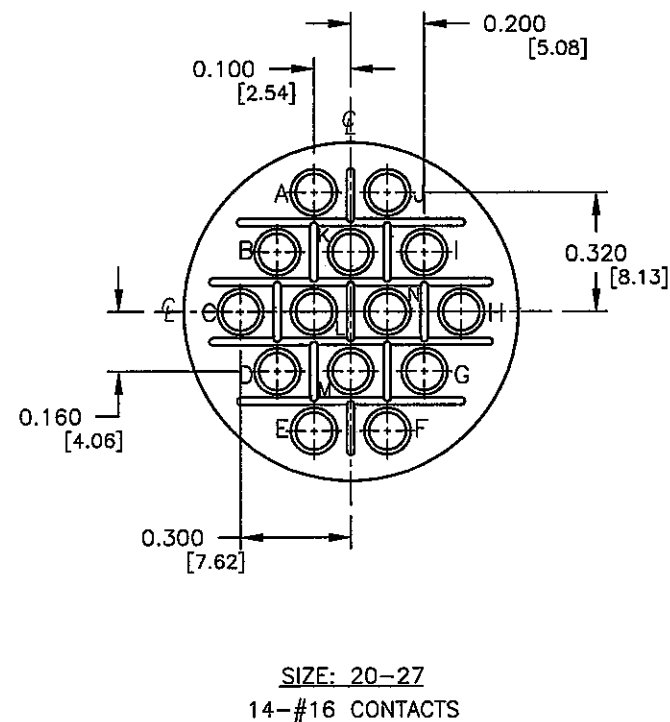
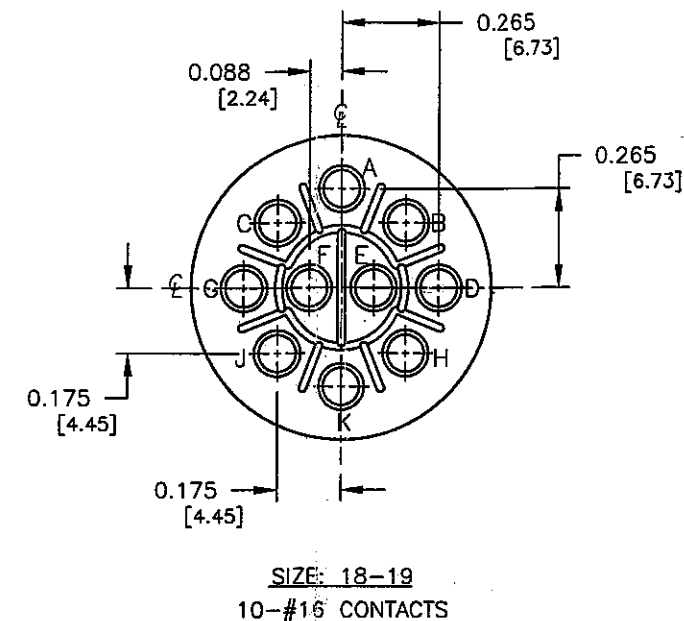
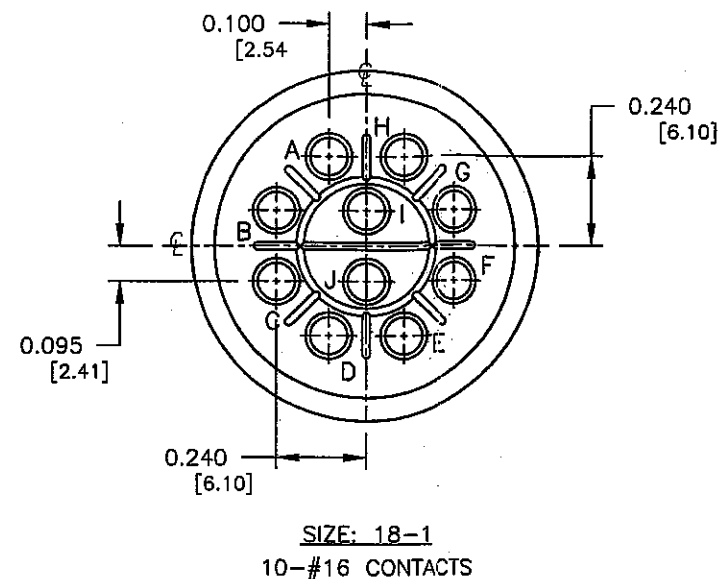
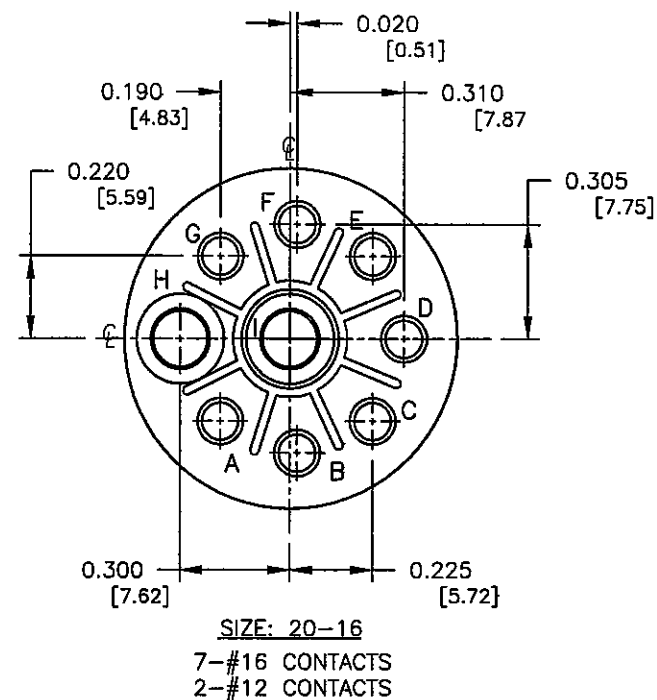
SIZE: 20-7
8-#16 CONTACTS

COPY

FACE VIEWS
(FOR PIN CONTACTS)

PART NUMBER: HPMQSTD

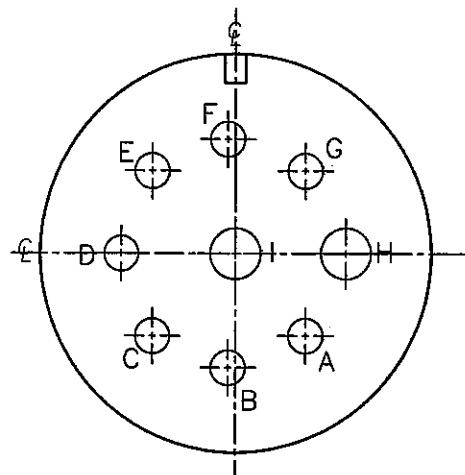
A	RCS	11-12-03	CREATED DRAWING PER ECR #2672
REV.	INIT.	DATE	DESCRIPTION
ALL INFORMATION ILLUSTRATED IS THE PROPERTY OF CONZALL CORPORATION. UNAUTHORIZED DUPLICATION OR DISTRIBUTION OF THIS DOCUMENT IS PROHIBITED.			ORIG. DRAWN BY: RCS DATE: 11-12-03 CHECKED BY: <i>ROL</i> 2/17/05 APPROVED BY: <i>MC</i> 2/17/05 SCALE: NTS B 4 OF 8 FILE: HPMQSTD4 DIRECTORY: DETAILS
ALL UNITS ARE IN FEET, INCHES, FRACTION OF INCHES AND DECIMALS. UNLESS OTHERWISE SPECIFIED TOLERANCES: 3 PLACE DECIMALS ±.005 ANGLES ±1° FRACTIONS ±1/16 CRITICAL CHARACTERISTIC FLAG PER SPEC. XXXX			601 E. WILDWOOD VILLA PARK, IL 60181 TITLE: HOLE PATTERNS MIL-E-QUAL SIZES: 18 & 20 CUSTOMER: PART NUMBER: HPMQSTD REV. A



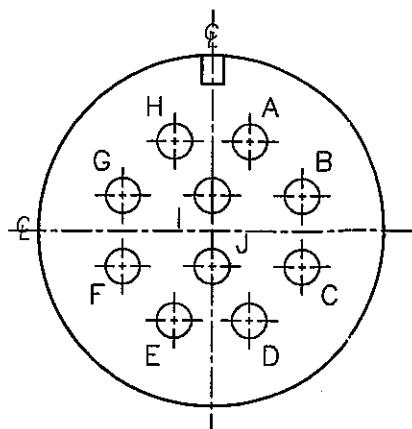
COPY

WIRE VIEWS
 (FOR PIN CONTACTS)

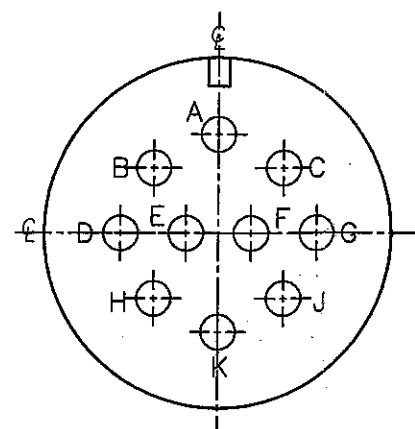
REV.	INIT.	DATE	DESCRIPTION
A	RCS	11-12-03	CREATED DRAWING PER ECR #2672
ALL INFORMATION ILLUSTRATED IS THE PROPERTY OF CONXALL CORPORATION. UNAUTHORIZED DUPLICATION OR DISTRIBUTION OF THIS DOCUMENT IS PROHIBITED.			
ALL UNITS ARE IN FEET, INCHES, FRACTION OF INCHES AND DECIMALS.			
UNLESS OTHERWISE SPECIFIED TOLERANCES:			
3 PLACE DECIMALS ±.005			
ANGLES ±1°			
FRACTIONS ±1/16			
CRITICAL CHARACTERISTIC FLAG PER SPEC. XXXX			
ORIGIN: DRAWN BY: DATE: 11-12-03 CHECKED BY: JAL 2/17/05 APPROVED BY: JMD 2/17/05			601 E. WILDWOOD VILLA PARK, IL 60181 TITLE: HOLE PATTERNS MIL-E-QUAL SIZES: 18 & 20
SCALE	SIZE	SHEET	CUSTOMER:
NTS	B	5 OF 8	
FILE:	DIRECTORY:	PART NUMBER:	REV.:
HPMQSTDH5	DETAILS	HPMQSTD	A



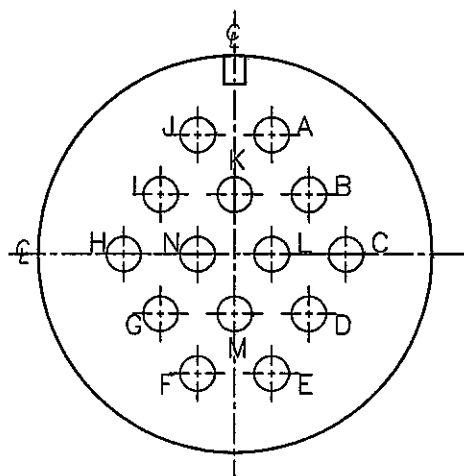
SIZE: 20-16
7-#16 CONTACTS
2-#12 CONTACTS



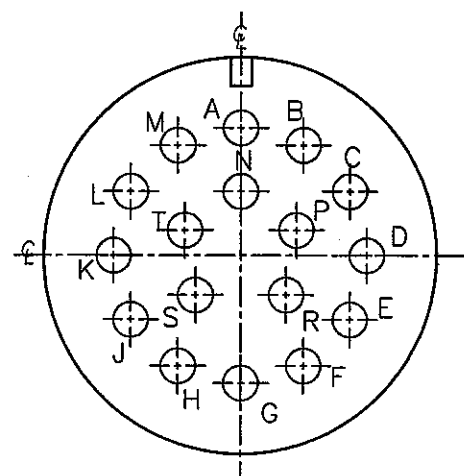
SIZE: 18-1
10-#16 CONTACTS



SIZE: 18-19
10-#16 CONTACTS



SIZE: 20-27
14-#16 CONTACTS



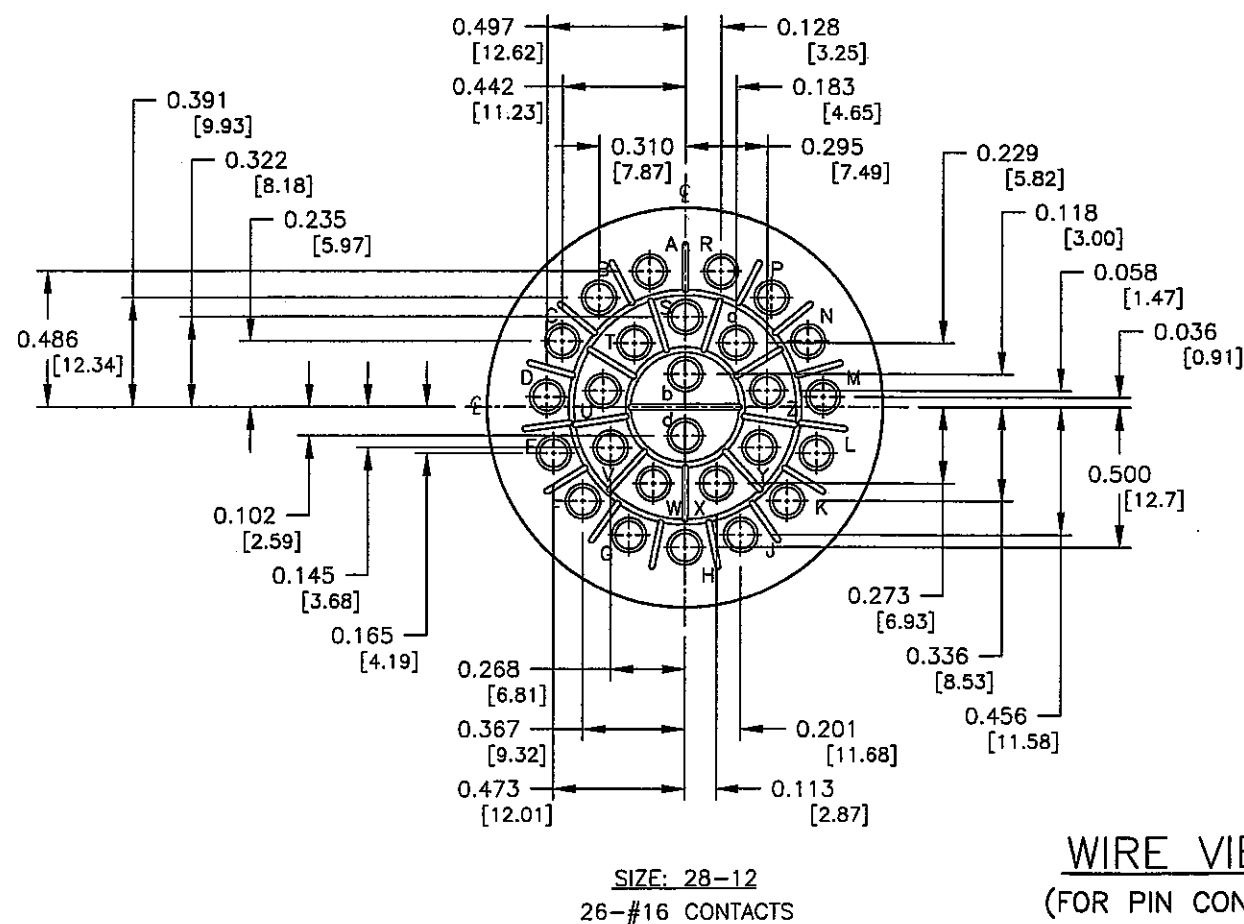
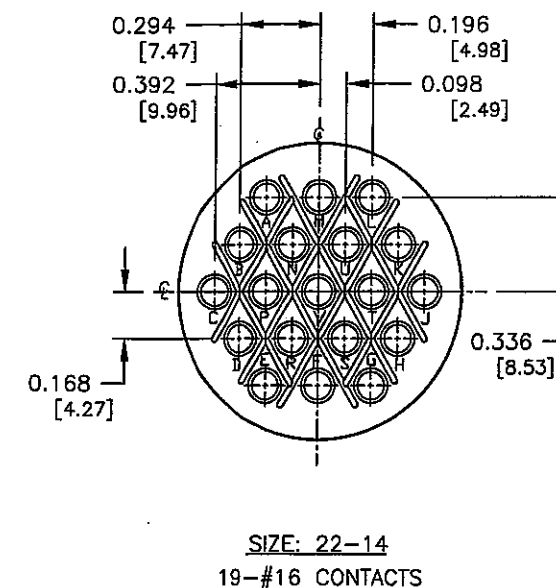
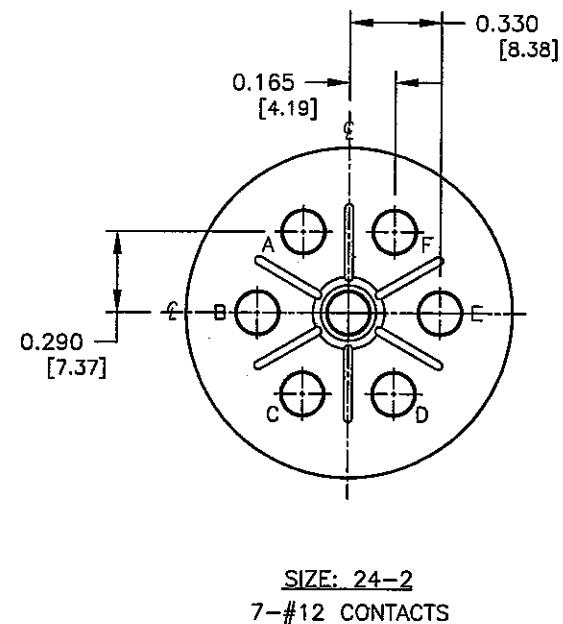
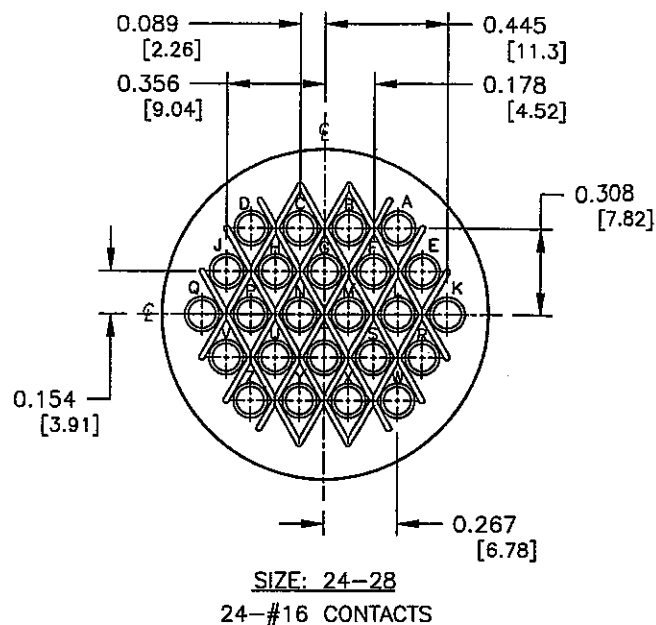
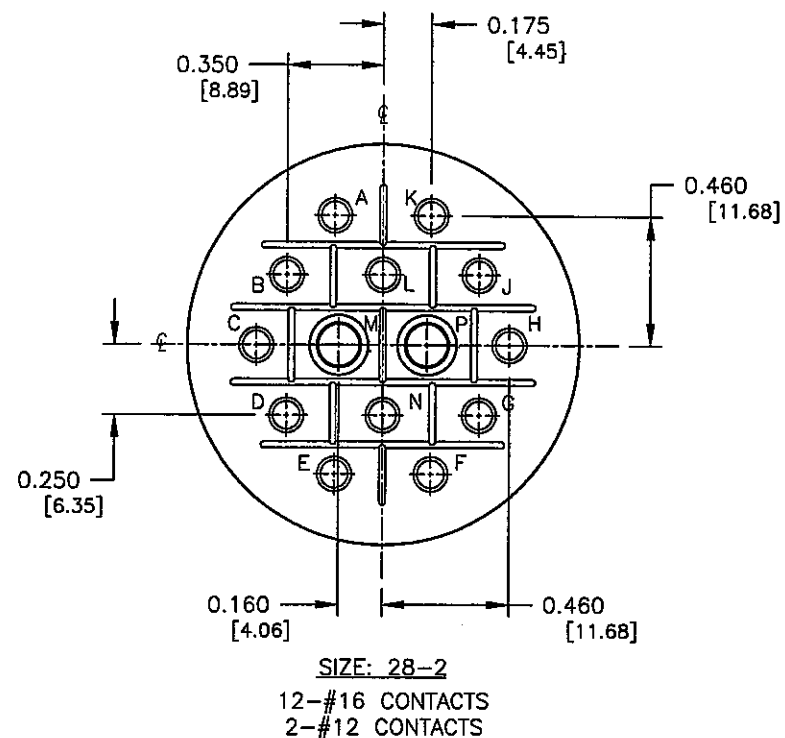
SIZE: 20-29
17-#16 CONTACTS

FACE VIEWS
(FOR PIN CONTACTS)

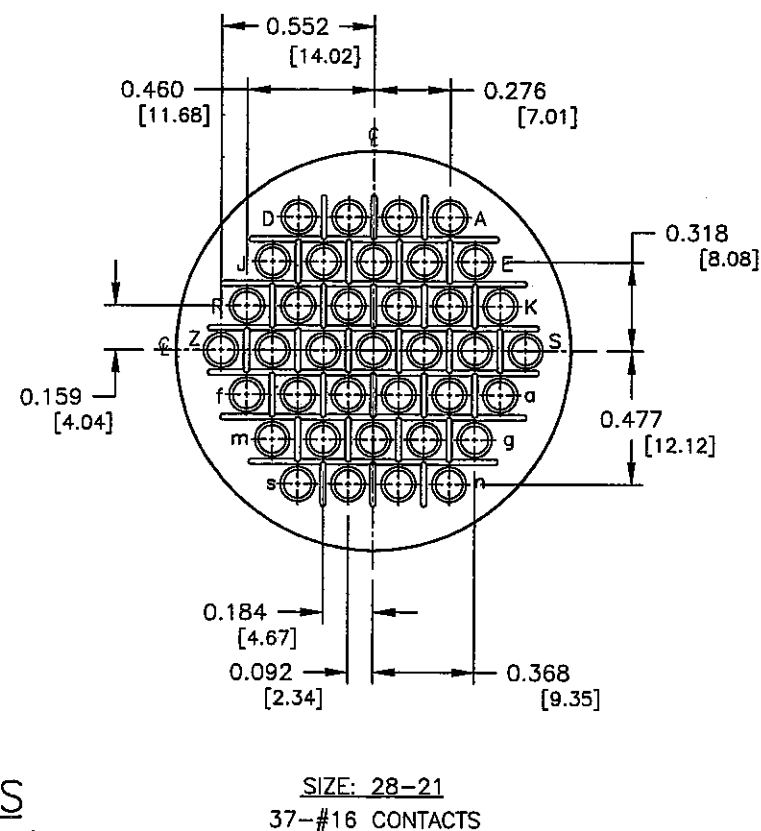
COPY

PART NUMBER: HPMQSTD

A	RCS	11-12-03	CREATED DRAWING PER ECR #2672
REV.	INIT.	DATE	DESCRIPTION
<small>ALL INFORMATION ILLUSTRATED IS THE PROPERTY OF CONXALL CORPORATION. UNAUTHORIZED DUPLICATION OR DISTRIBUTION OF THIS DOCUMENT IS PROHIBITED.</small>			<small>ORIG. DRAWN BY: DATE:</small> RCS 11-12-03
<small>ALL UNITS ARE IN FEET, INCHES, FRACTION OF INCHES AND DECIMALS.</small>			
<small>UNLESS OTHERWISE SPECIFIED TOLERANCES:</small> 3 PLACE DECIMALS ±.005 ANGLES ±1° FRACTIONS ±1/16			
<small>APPROVED BY:</small> <i>gahr</i> 2/17/05			<small>601 E. WILDWOOD VILLA PARK, IL 60181</small>
<small>CHECKED BY:</small> <i>gahr</i> 2/17/05			<small>TITLE:</small> HOLE PATTERNS MIL-E-QUAL SIZES: 18 & 20
<small>SCALE:</small> NTS B 6 OF 8			<small>CUSTOMER:</small>
<small>FILE:</small> HPMQSTD5HG			<small>PART NUMBER:</small> HPMQSTD
<small>DIRECTORY:</small> DETAILS			<small>REV.</small> A



WIRE VIEWS
(FOR PIN CONTACTS)

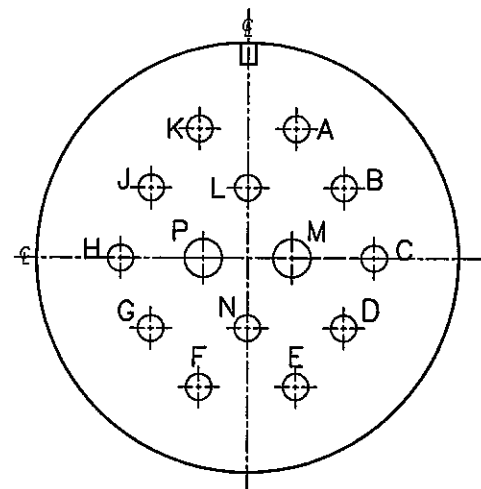


COPY

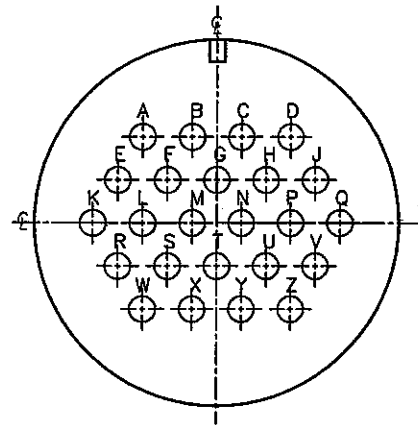
PART NUMBER: HPMQSTD

REV. A	INIT. RCS	DATE 11-12-03	DESCRIPTION CREATED DRAWING PER ECR #2672
ALL INFORMATION ILLUSTRATED IS THE PROPERTY OF CONZALL CORPORATION. UNAUTHORIZED REPRODUCTION OR DISTRIBUTION OF THIS DOCUMENT IS PROHIBITED.			ORIG. DRAWN BY: DATE: RCS 11-12-03
ALL UNITS ARE IN FEET, INCHES, FRACTION OF INCHES AND DECIMALS.			CHECKED BY: <i>John</i> 2/17/05
UNLESS OTHERWISE SPECIFIED TOLERANCES: 3 PLACE DECIMALS ±.005 ANGLES ±1° FRACTIONS ±1/16			APPROVED BY: <i>John</i> 2/17/05
CRITICAL CHARACTERISTIC FLAG PER SPEC. XXXX			SCALE: SIZE 7 OF 8
FILE: HPMQSTD7			DIRECTORY: DETAILS
PART NUMBER: HPMQSTD			CUSTOMER: 601 E. WILDWOOD VILLA PARK, IL 60181
			TITLE: HOLE PATTERNS MIL-E-QUAL SIZES: 22, 24 & 28
			REV. A

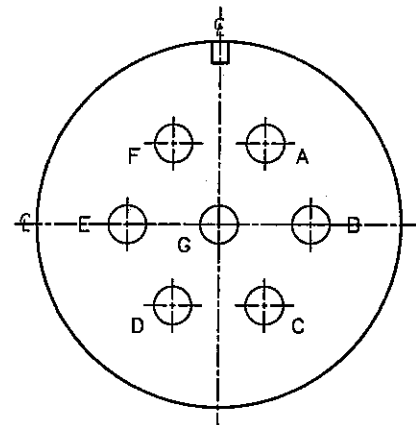
MFG. ENG. APPROVED BY: DATE: 5/14/15



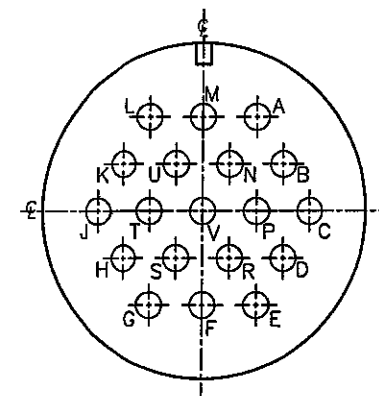
SIZE: 28-2
12-#16 CONTACTS
2-#12 CONTACTS



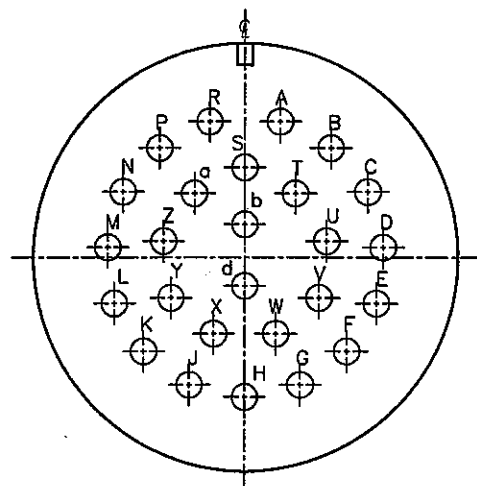
SIZE: 24-28
24-#16 CONTACTS



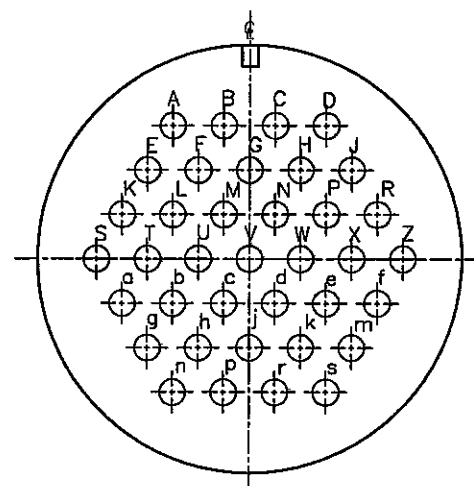
SIZE: 24-2
7-#12 CONTACTS



SIZE: 22-14
19-#16 CONTACTS



SIZE: 28-12
26-#16 CONTACTS



SIZE: 28-21
37-#16 CONTACTS

FACE VIEWS
(FOR PIN CONTACTS)

COPY

PART NUMBER: HPMQSTD

A	RCS	11-12-03	CREATED DRAWING PER ECR #2672
REV.	INIT.	DATE	DESCRIPTION
ALL INFORMATION ILLUSTRATED IS THE PROPERTY OF CONXALL CORPORATION. UNAUTHORIZED DUPLICATION OR DISTRIBUTION OF THIS DOCUMENT IS PROHIBITED.			ORIG. DRAWN BY: DATE: RCS 11-12-03
ALL UNITS ARE IN FEET, INCHES, FRACTION OF INCHES AND DECIMALS.			CHECKED BY: 2/17/05
UNLESS OTHERWISE SPECIFIED TOLERANCES:			APPROVED BY: 2/17/05
3 PLACE DECIMALS ±.005			SCALE: SIZE: SHEET
ANGLES ±1°			NTS B 8 OF 8
FRACTIONS ±1/16			FILE: DIRECTORY: HPMQSTDSDSHE DETAILS
= CRITICAL CHARACTERISTIC FLAG PER SPEC. XXXX			PART NUMBER: HPMQSTD
			REV. A

Mouser Electronics

Authorized Distributor

Click to View Pricing, Inventory, Delivery & Lifecycle Information:

[Switchcraft:](#)

[CXS3102A1819P](#)