

8X 0.025
[0.64]
SQUARE

0.18±0.02
[4.5±0.5]

LIQUID
GLUE
SILICONE

0.283 [7.18] 2X 0.100 [2.54]

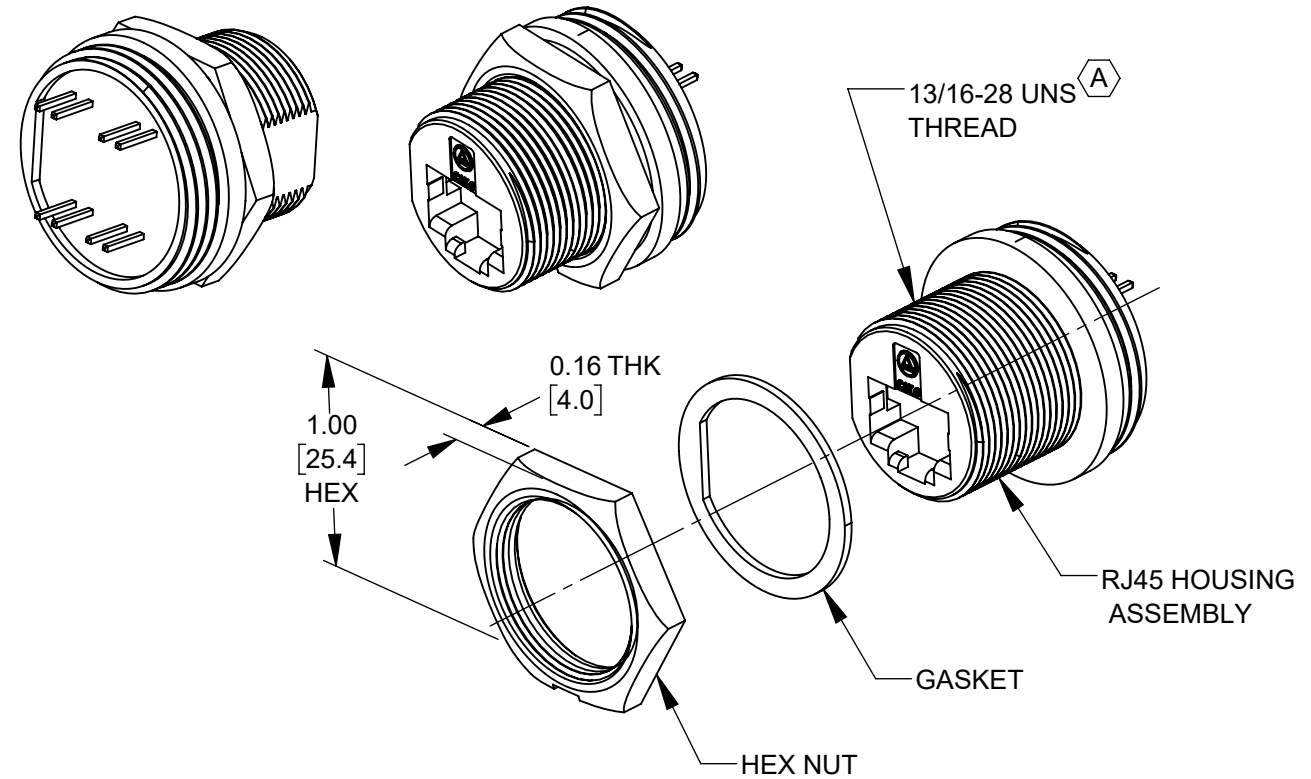
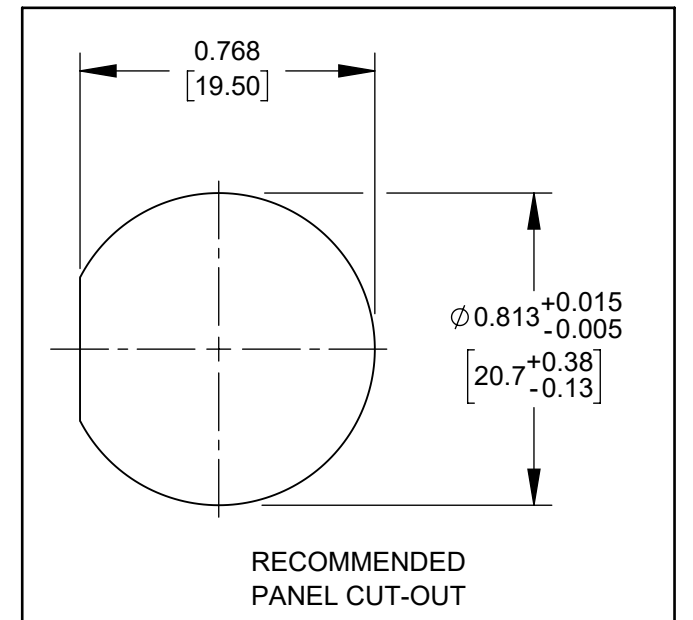
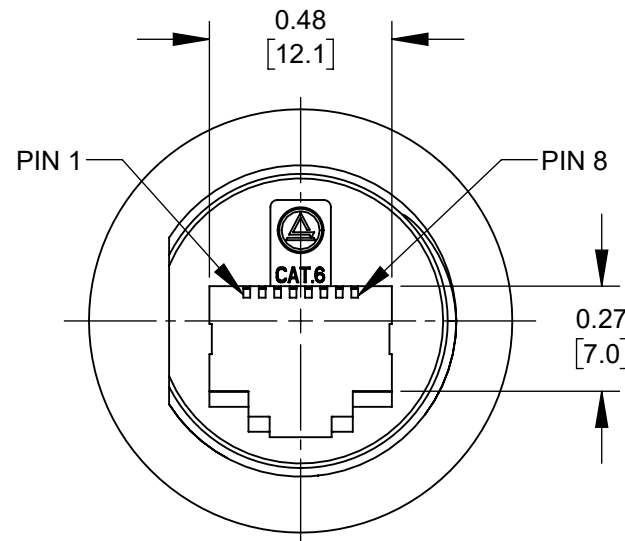
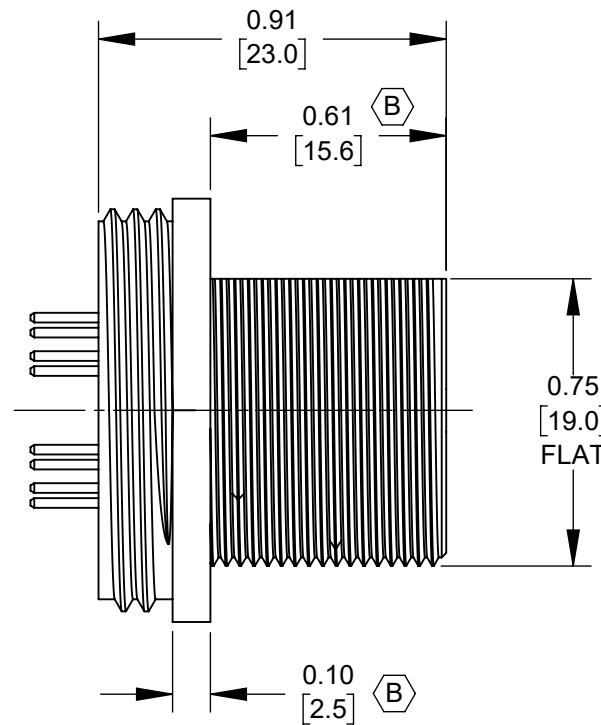
0.265 [6.73]

0.218 [5.53]

(B) FLAT ON
FRONT THREAD
OF HOUSING

0.205 [5.20] 2X 0.100 [2.54]

PCB LAYOUT
COMPONENT SIDE



CUSTOMER DRAWING

NOTES:

1. IP67 RATED WHEN PROPERLY ASSEMBLED.
2. PANEL THICKNESS MAX OF 0.169 [4.30].
3. ALL PARTS SHIPPED ASSEMBLED.
4. MATERIALS;
HOUSING AND PANEL NUT - NYLON, BLACK
GASKET- EPDM RUBBER, BLACK
5. THIS PRODUCT IS RoHS COMPLIANT.

| REV | ECO NUMBER | DATE | BY | APVD |
|-----------|------------|----------|----|------|
| B | 28436 | 11/01/21 | PC | TJK |
| A | 28311 | 08/24/20 | PC | TJK |
| REVISIONS | | | | |

UNLESS OTHERWISE SPECIFIED

1. ALL DIMENSIONS IN INCHES [mm]
- TWO PLACE DECIMALS ±0.02 [0.5]
- THREE PLACE DECIMALS ±0.005 [0.13]

DO NOT SCALE DRAWING

THIS DRAWING DESCRIBES A DESIGN CONSIDERED PROPRIETARY IN NATURE, DEVELOPED AND MANUFACTURED BY SWITCHCRAFT INC. AND IS RELEASED ON A CONFIDENTIAL BASIS FOR IDENTIFICATION PURPOSES ONLY.

| | | | | | | | | | |
|---|--|----------|-----------------------|--------------|------------------------|--------------|--|--------|----------|
| SIZE | | WIDTH | | MULT | | LBS/M | | TEMPER | |
| FINISH SPEC No. | | | | | MATERIAL SPEC No. | | | | |
| FIRST USED ON | | | | SCALE 2:1 | | Switchcraft® | | | |
| DATE DRAWN 6/23/20 | | BY FM | CHKD FM 6/23/20 | | APVD TJK 7/31/20 | | | | |
| | | | | | | SHEET 1 OF 1 | | | |
| NAME RJ45 CAT6 PANEL MOUNT, UNSHIELDED JACK, PC TERMINAL | | | | | PART No. ENDP6PC | | | | REV B |

SolidWorks CAD File (B)

Mouser Electronics

Authorized Distributor

Click to View Pricing, Inventory, Delivery & Lifecycle Information:

Switchcraft:

ENDP6PC