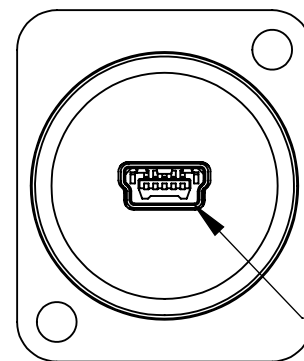
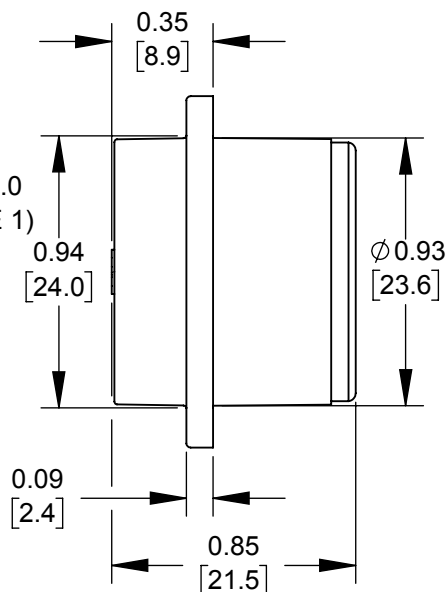


FRONT VIEW

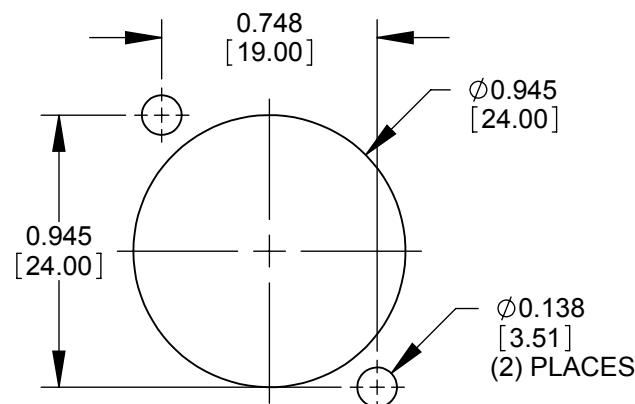
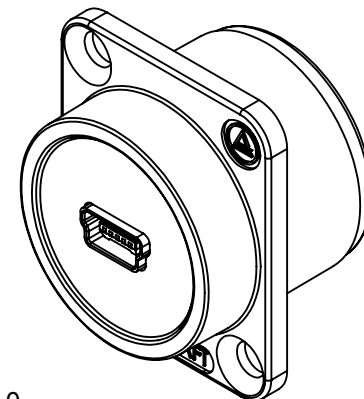
✓  $\phi 0.138$  [3.50] THRU  
 $\phi 0.230$  [5.84] x 82°  
 (2) PLACES

MINI USB 2.0  
 (SEE NOTE 1)



REAR VIEW

MINI USB 2.0  
 (SEE NOTE 1)



RECOMMENDED  
 PANEL CUT-OUT

**CUSTOMER DRAWING**

NOTES:

1. RECEPTACLE IS USB 2.0 MINI TYPE "B".
2. MATERIALS:  
 USB 2.0 MINI -  
 INSULATOR - THERMOPLASTIC, BLACK  
 SHELL - COPPER ALLOY, NICKEL PLATED  
 CONTACTS - COPPER ALLOY, GOLD PLATED  
 PCB - FR4  
 EH HOUSING - THERMOPLASTIC, BLACK
3. THIS PRODUCT IS RoHS COMPLIANT.

					THIS DRAWING DESCRIBES A DESIGN CONSIDERED PROPRIETARY IN NATURE, DEVELOPED AND MANUFACTURED BY SWITCHCRAFT INC. AND IS RELEASED ON A CONFIDENTIAL BASIS FOR IDENTIFICATION PURPOSES ONLY.				
					SIZE	WIDTH	MULT	LBS/M	TEMPER
					FINISH			MATERIAL	
					SPEC No.			SPEC No.	
					FIRST USED ON		SCALE		Switchcraft®
					DATE DRAWN	BY	CHKD	APVD	
					8/22/18	JGK	*	*	
					NAME			PART No.	REV
					EH USB 2.0 MINI FEED-THRU, RoHS			EHUSBMNMN	0A
REVISIONS					DO NOT SCALE DRAWING				
0A	PDR 18003	8/22/18	JGK	*					
REV	ECO NUMBER	DATE	BY	APVD					

SolidWorks CAD File



# Mouser Electronics

Authorized Distributor

Click to View Pricing, Inventory, Delivery & Lifecycle Information:

Switchcraft:

[EHUSBMNMPKG](#) [EHUSBMNMN](#)