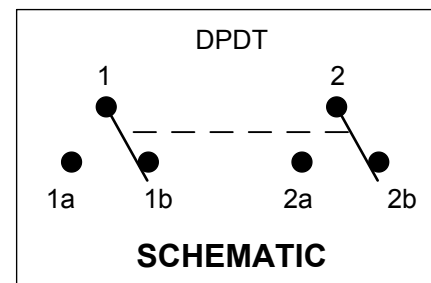
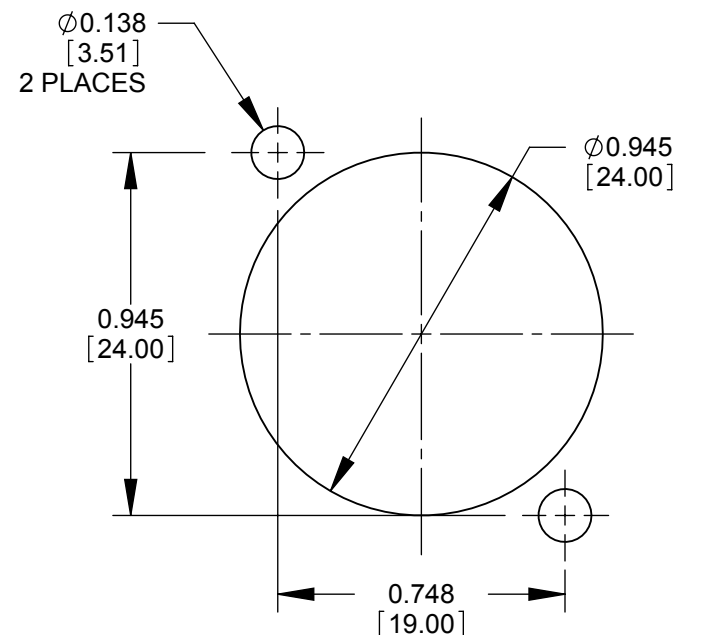


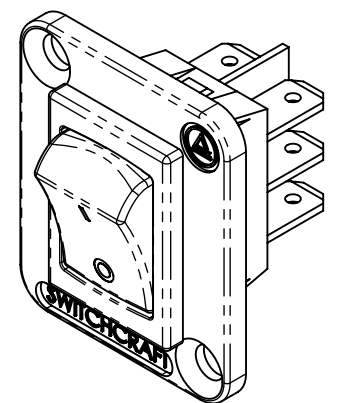
REAR VIEW  
TERMINAL ARRANGEMENT



SCHEMATIC



RECOMMENDED  
PANEL CUT-OUT



CUSTOMER DRAWING

NOTES:

- SWITCH SPECIFICATIONS:  
RECTANGULAR ROCKER SWITCH, UL RECOGNIZED  
BLACK WITH WHITE "I/O" MARKINGS  
CIRCUIT: DPDT  
CIRCUIT FUNCTION: ON-ON  
RATING: 16A @ 125-250 VAC, 105° C per UL1054  
CONTACT RESISTANCE: 0.01Ω MAX. AT 10mA (INITIAL)  
INSULATION RESISTANCE: 10<sup>9</sup>MΩ MIN.  
DIELECTRIC WITHSTANDING VOLTAGE: 2,500 V FOR 1 MINUTE  
ELECTRICAL LIFE: 100,000 CYCLES, NO LOAD, MINIMUM  
TERMINAL STYLE: 0.187" [4.75] QUICK CONNECT TABS, SILVER PLATED
- MATERIAL:  
FLANGE - ZINC, SEE TABLE FOR FINISH  
SWITCH HOUSING AND KNOB - THERMOPLASTIC  
SWITCH TERMINALS & CONTACTS - COPPER ALLOY, AND/OR  
COPPER ALLOY SILVER PLATED
- FOR FLANGE MOUNTING SCREWS TO BE SHIPPED WITH ASSEMBLY,  
ADD THE SUFFIX "PKG" TO THE PART NUMBER.
- THESE PRODUCTS ARE RoHS COMPLIANT.

PART NUMBER	FLANGE FINISH
EHRRSL	NICKEL
EHRRSLB	BLACK

					<div>UNLESS OTHERWISE SPECIFIED</div> <div>1. ALL DIMENSIONS IN INCHES</div> <div>- TWO PLACE DECIMALS    ±0.02</div> <div>- THREE PLACE DECIMALS    ±0.005</div>	THIS DRAWING DESCRIBES A DESIGN CONSIDERED PROPRIETARY IN NATURE, DEVELOPED AND MANUFACTURED BY SWITCHCRAFT INC. AND IS RELEASED ON A CONFIDENTIAL BASIS FOR IDENTIFICATION PURPOSES ONLY.														
						SIZE	WIDTH		MULT		LBS/M		TEMPER							
						FINISH SPEC No.						MATERIAL SPEC No.								
						FIRST USED ON *				SCALE 2:1		<div>Switchcraft®</div>								
						DATE DRAWN	BY	CHKD		APVD										
A	26781	6-9-11	TO	TJK		07/28/09	BS	PNK		SRC		SHEET 1 OF 1								
								01/31/11		01/31/11										
REV	ECO NUMBER	DATE	BY	APVD		NAME    EH SERIES DPDT RECTANGULAR ROCKER SWITCH, RoHS										PART No. EHRRSL SERIES				REV A
REVISIONS						DO NOT SCALE DRAWING														

# Mouser Electronics

Authorized Distributor

Click to View Pricing, Inventory, Delivery & Lifecycle Information:

Switchcraft:

[EHRRSL](#) [EHRRSLB](#) [EHRRSLBPKG](#) [EHRRSLPKG](#)