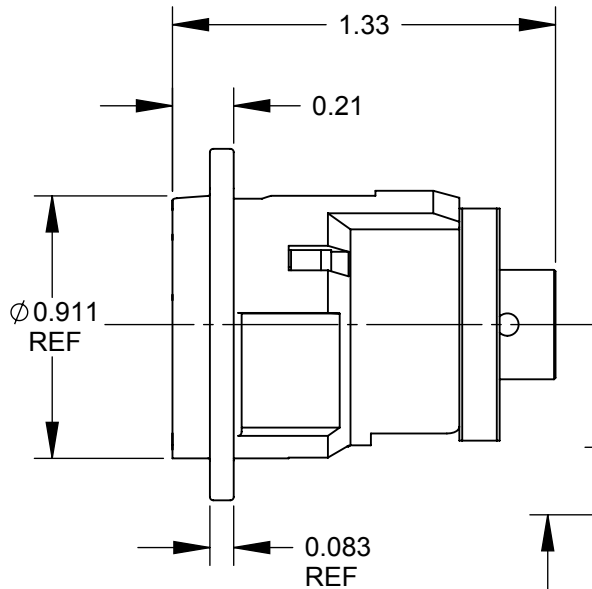
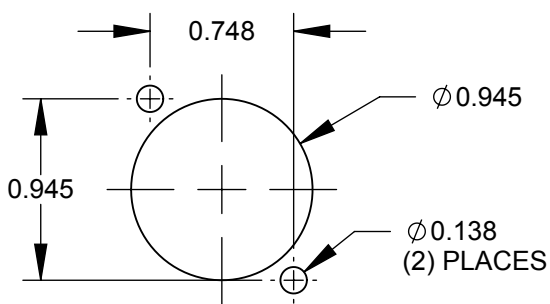
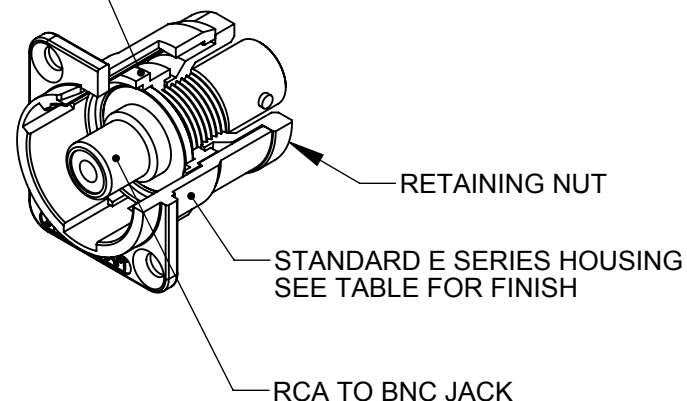


✓  $\varnothing 0.138$  THRU  
 $\varnothing 0.230 \times 82^\circ$   
(2) PLACES REF



HOUSING INSERT



RECOMMENDED  
PANEL CUT-OUT

NOTES:

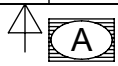
1. MATERIALS:  
HOUSING - ZINC ALLOY  
HOUSING INSERT - THERMOPLASTIC, BLACK  
RETAINING NUT - THERMOPLASTIC, BLACK  
RCA TO BNC JACK - COPPER ALLOY, NICKEL PLATED
2. THIS PRODUCT IS RoHS COMPLIANT.

PART NUMBER	HOUSING FINISH
EHRCABNCX	NICKEL
EHRCABNCBX	BLACK CHROME

**CUSTOMER DRAWING**

					<div>UNLESS OTHERWISE SPECIFIED</div> <div>1. ALL DIMENSIONS IN INCHES</div> <div>- TWO PLACE DECIMALS     ±0.02</div> <div>- THREE PLACE DECIMALS    ±0.005</div>	THIS DRAWING DESCRIBES A DESIGN CONSIDERED PROPRIETARY IN NATURE, DEVELOPED AND MANUFACTURED BY SWITCHCRAFT INC. AND IS RELEASED ON A CONFIDENTIAL BASIS FOR IDENTIFICATION PURPOSES ONLY.							
						SIZE	WIDTH		MULT	LBS/M	TEMPER		
						FINISH				MATERIAL			
						SPEC No.				SPEC No.			
						FIRST USED ON			SCALE 1.5:1		<div>Switchcraft®</div>		
B	26415	7/17/09	RS	TJK		DATE DRAWN 8/31/06	BY RF	CHKD RF 8/31/06	APVD TJK 8/31/06				
A	26104	9/28/06	RF	TJK		SHEET    1                      OF    1							
REV	ECO NUMBER	DATE	BY	APVD	NAME				PART No.		REV		
REVISIONS					DO NOT SCALE DRAWING					E SERIES RCA TO BNC, RoHS			
									EHRCABNC_X SERIES		B		

SolidWorks CAD File



# Mouser Electronics

Authorized Distributor

Click to View Pricing, Inventory, Delivery & Lifecycle Information:

Switchcraft:

[EHRCABNCX](#) [EHRCABNCBPKG](#) [EHRCABNCB](#) [EHRCABNCXPKG](#) [EHRCABNCBXPKG](#) [EHRCABNCBX](#)