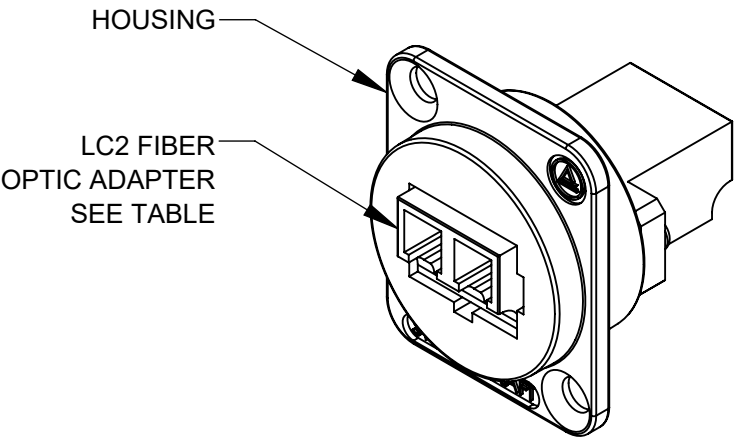
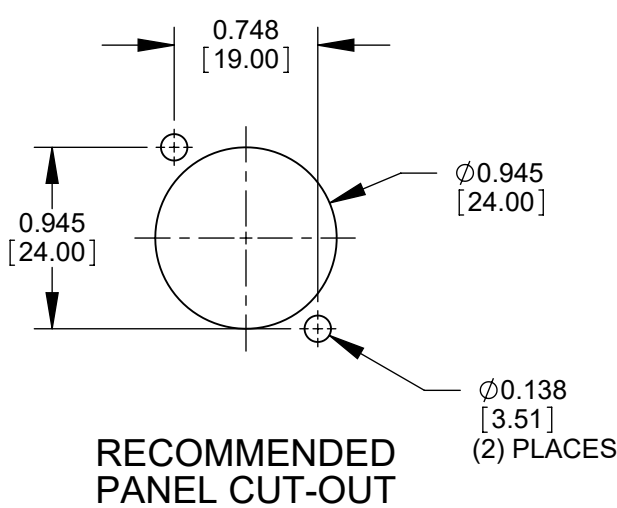
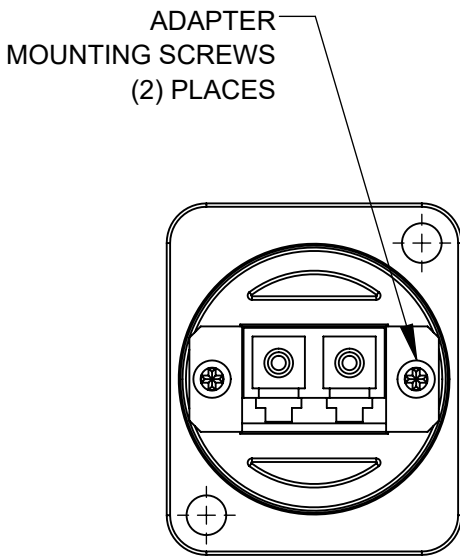
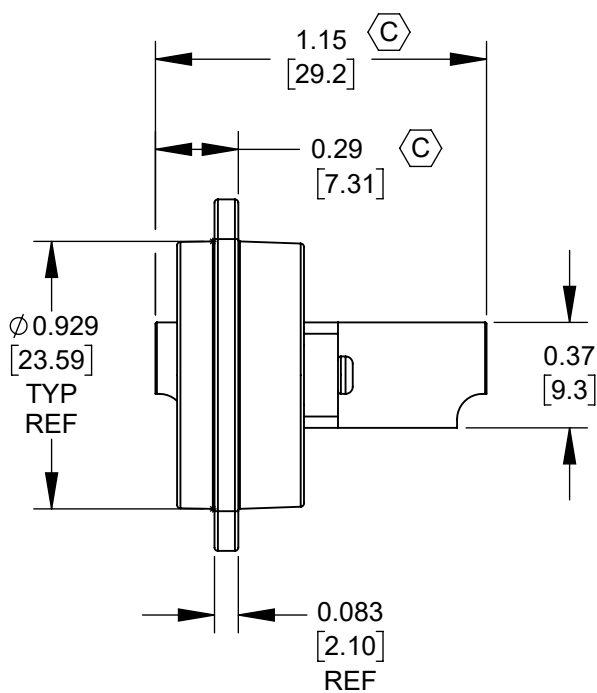
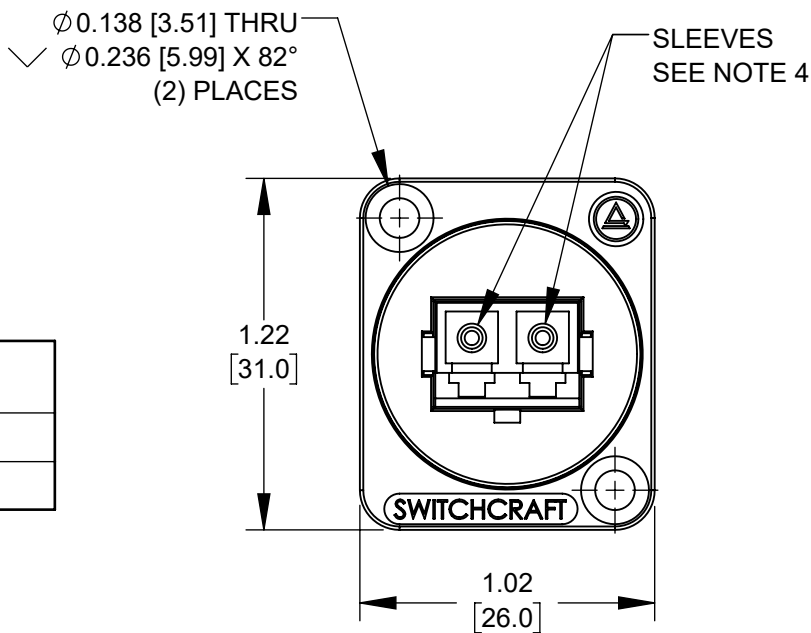


ALTERNATIVE DESIGN C



PART NUMBER	LC2 ADAPTER	ADAPTER COLOR
EHLC2	SINGLE-MODE	BLUE
EHLC2M	MULTI-MODE	BEIGE



NOTES:

1. INSERTION LOSS: 0.75 dB MAX.
2. OPERATION TEMP: -20°C TO +70°C.
3. PRODUCT COMES WITH DUST CAPS. (NOT SHOWN)
4. MATERIALS:
 - SLEEVE:
 - SINGLE-MODE - CERAMIC (ZIRCONIA)
 - MULTI-MODE - PHOSPHORUS BRONZE
 - HOUSING - DELRIN, BLACK
 - ADAPTER - THERMOPLASTIC
 - SCREWS - STEEL, NICKEL PLATED
 - ADAPTER MOUNTING CLIPS - STAINLESS STEEL
5. FOR MOUNTING SCREWS TO BE SHIPPED WITH ASSEMBLY AND INDIVIDUALING PACKAGING, ADD SUFFIX -PKG TO PART NUMBER.
6. WHEN MOUNTING ASSEMBLY, USE A SCREW TORQUE OF 10 INCH-POUNDS MAXIMUM.
7. THIS PRODUCT IS RoHS COMPLIANT.

CUSTOMER DRAWING

						THIS DRAWING DESCRIBES A DESIGN CONSIDERED PROPRIETARY IN NATURE, DEVELOPED AND MANUFACTURED BY SWITCHCRAFT INC. AND IS RELEASED ON A CONFIDENTIAL BASIS FOR IDENTIFICATION PURPOSES ONLY.																	
						UNLESS OTHERWISE SPECIFIED 1. ALL DIMENSIONS IN INCHES [mm] - TWO PLACE DECIMALS ±0.02 [0.5] - THREE PLACE DECIMALS ±0.005 [0.13]	SIZE		WIDTH		MULT		LBS/M		TEMPER								
							FINISH						MATERIAL										
							SPEC No.						SPEC No.										
							FIRST USED ON				SCALE 1.5:1		Switchcraft®										
C	28516	06/27/22	PC	TJK			DATE DRAWN		BY	CHKD		APVD											
B	27239	1/3/14	TO	TJK			11/07/07		JGK	RS 5/21/09		TJK 7/16/09											
A	26348	2/27/09	RS	TJK									SHEET 1 OF 1										
REV	ECO NUMBER	DATE	BY	APVD		NAME E SERIES LC TO LC						PART No.				REV							
REVISIONS						DO NOT SCALE DRAWING						FIBER OPTIC ADAPTER, RoHS						EHLC2_SERIES				C	

Mouser Electronics

Authorized Distributor

Click to View Pricing, Inventory, Delivery & Lifecycle Information:

Switchcraft:

[EHLC2](#) [EHLC2M](#)