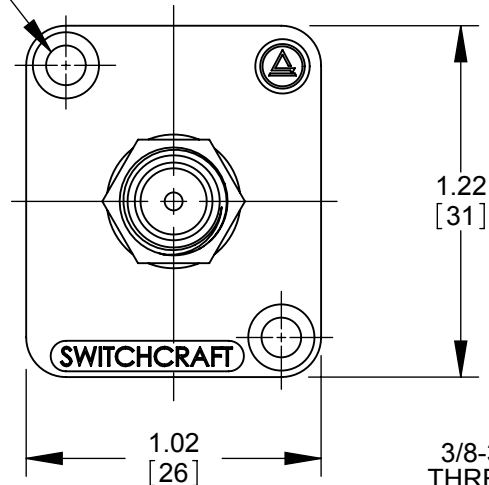
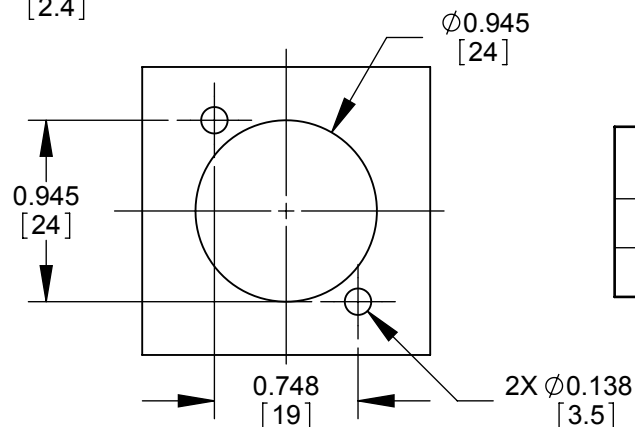
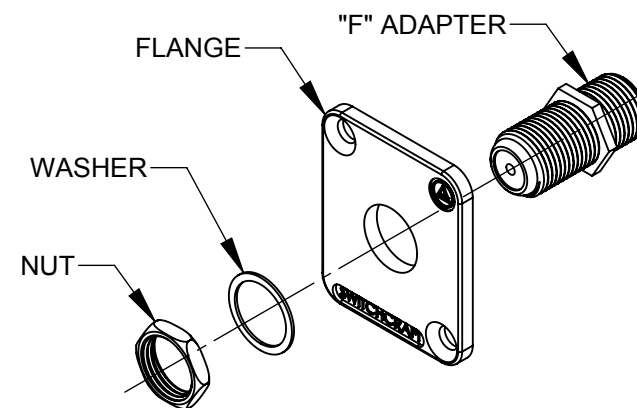
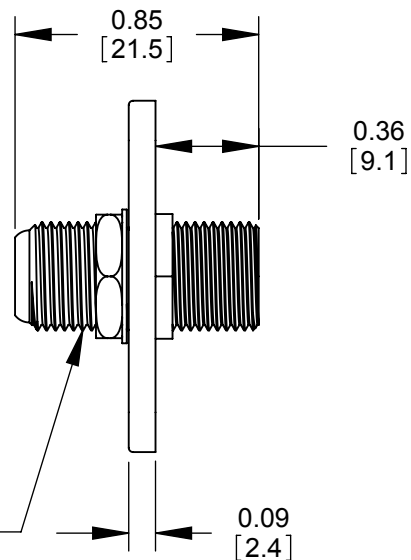


Ø0.14 HOLE
✓ Ø0.23 X 82° (2 PLCS)



3/8-32 UNEF
THREAD TYP



RECOMMENDED PANEL CUT-OUT
SCALE 1:1

PART NUMBER	FLANGE FINISH
EHFF2	NICKEL PLATED
EHFF2B	BLACK CHROME

NOTES:

- MATERIAL:
FLANGE - ZINC
- FOR MOUNTING SCREWS TO BE SHIPPED WITH ASSEMBLY,
ADD THE SUFFIX "PKG" TO THE PART NUMBER.
- THESE PRODUCTS ARE RoHS COMPLIANT.

CUSTOMER DRAWING

					<div>UNLESS OTHERWISE SPECIFIED</div> <div>1. ALL DIMENSIONS IN INCHES</div> <div>- TWO PLACE DECIMALS ±0.02</div> <div>- THREE PLACE DECIMALS ±0.005</div>	THIS DRAWING DESCRIBES A DESIGN CONSIDERED PROPRIETARY IN NATURE, DEVELOPED AND MANUFACTURED BY SWITCHCRAFT INC. AND IS RELEASED ON A CONFIDENTIAL BASIS FOR IDENTIFICATION PURPOSES ONLY.										
						SIZE	WIDTH		MULT		LBS/M		TEMPER			
						FINISH						MATERIAL				
						SPEC No.						SPEC No.				
						FIRST USED ON				SCALE		<div>Switchcraft®</div>				
										3:2						
						DATE DRAWN	BY	CHKD		APVD		<div>SHEET 1 OF 1</div>				
A	26327	2/4/09	JEB	TJK	06/30/08	BS	JEB		TJK							
REV	ECO NUMBER	DATE	BY	APVD							PART No.		REV			
REVISIONS					DO NOT SCALE DRAWING						EH SERIES FEMALE "F" TO "F" ADAPTER, RoHS					
											EHFF2_SERIES					
											A					

DO NOT SCALE DRAWING

SolidWorks CAD File



Mouser Electronics

Authorized Distributor

Click to View Pricing, Inventory, Delivery & Lifecycle Information:

Switchcraft:

[EHFW800X2BPKG](#) [EHFW2BXPKG](#) [EHFF2](#) [EHFF2B](#) [EHFF2BPKG](#) [EHFF2PKG](#) [EHFWX2XPKG](#)