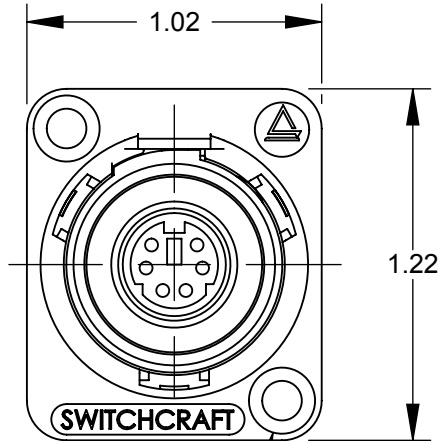
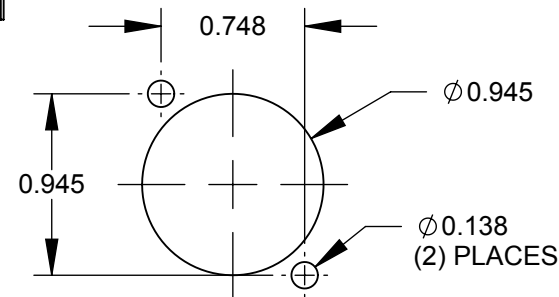
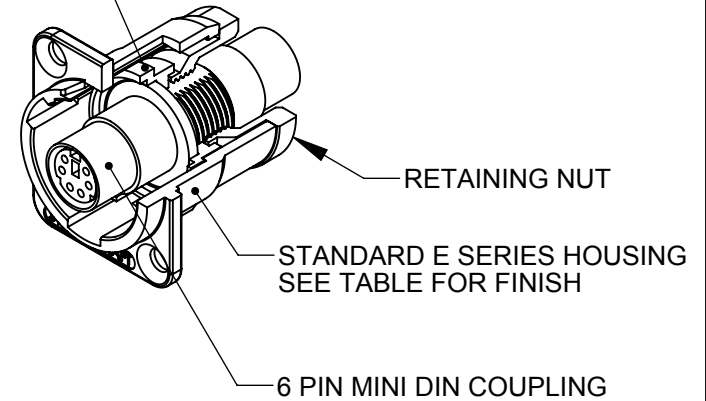
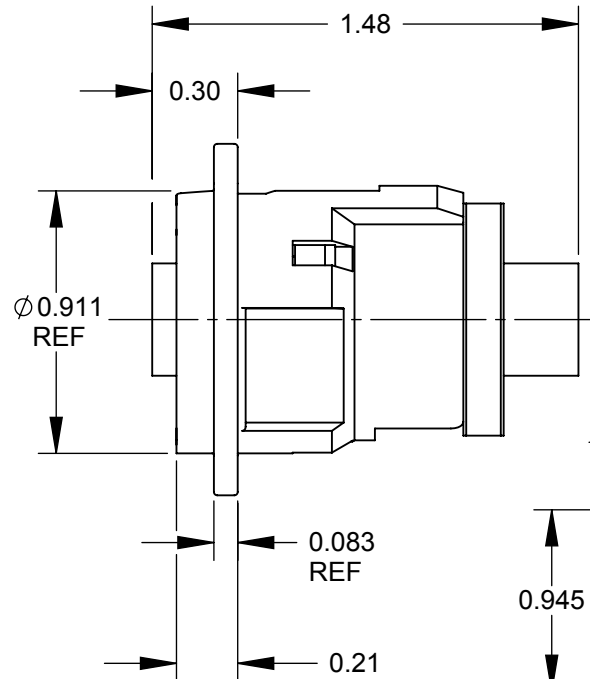




HOUSING INSERT



✓ $\phi 0.138$ THRU
 $\phi 0.230 \times 82^\circ$
(2) PLACES REF



RECOMMENDED
PANEL CUT-OUT

NOTES:

- MATERIALS:
HOUSING - ZINC ALLOY
HOUSING INSERT - THERMOPLASTIC, BLACK
RETAINING NUT - THERMOPLASTIC, BLACK
MINI DIN COUPLING - COPPER ALLOY, NICKEL PLATED
- THIS PRODUCT IS RoHS COMPLIANT.

PART NUMBER	HOUSING FINISH
EH6MD2X	NICKEL
EH6MD2BX	BLACK CHROME

CUSTOMER DRAWING

					<div>UNLESS OTHERWISE SPECIFIED</div> <div>1. ALL DIMENSIONS IN INCHES</div> <div>- TWO PLACE DECIMALS ±0.02</div> <div>- THREE PLACE DECIMALS ±0.005</div>	THIS DRAWING DESCRIBES A DESIGN CONSIDERED PROPRIETARY IN NATURE, DEVELOPED AND MANUFACTURED BY SWITCHCRAFT INC. AND IS RELEASED ON A CONFIDENTIAL BASIS FOR IDENTIFICATION PURPOSES ONLY.				
						SIZE	WIDTH	MULT	LBS/M	TEMPER
						FINISH			MATERIAL	
						SPEC No.			SPEC No.	
						FIRST USED ON		SCALE 1.5:1		<div>Switchcraft®</div> <div>SHEET 1 OF 1</div>
B	26415	7/17/09	RS	TJK	DATE DRAWN	BY	CHKD	APVD		
A	26020	9/28/06	RF	TJK	9/28/06	RF	9/28/06	9/28/06		
REV	ECO NUMBER	DATE	BY	APVD	NAME E SERIES CONNECTOR, 6 PIN MINI DIN FEEDTHROUGH, RoHS				PART No. EH6MD2_X SERIES	REV B
REVISIONS					DO NOT SCALE DRAWING					

SolidWorks CAD File



Mouser Electronics

Authorized Distributor

Click to View Pricing, Inventory, Delivery & Lifecycle Information:

Switchcraft:

[EH6MD2BXPKG](#) [EH6MD2XPKG](#)