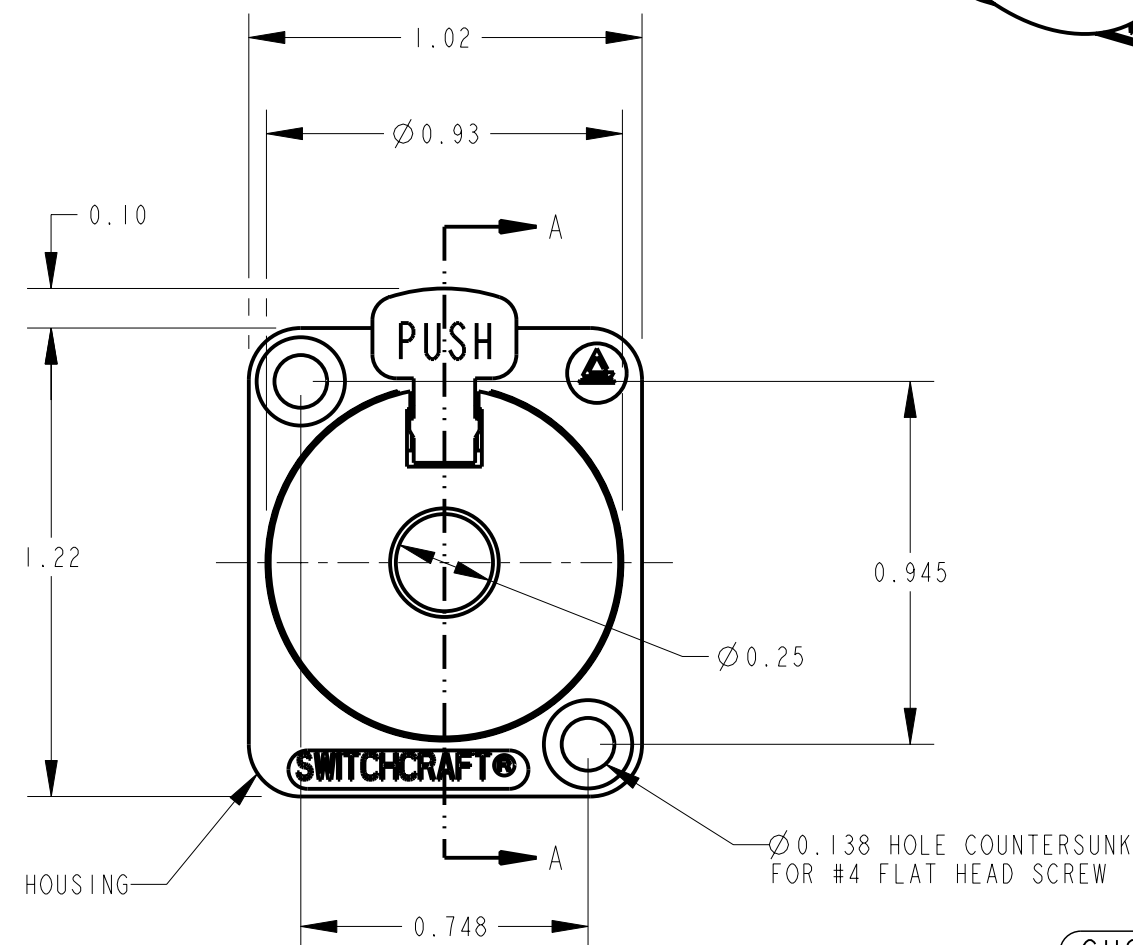
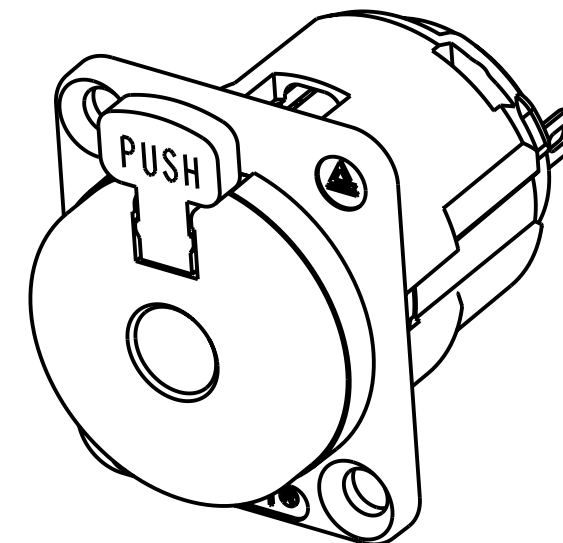


SECTION A-A



CUSTOMER DRAWING

NOTES:

- MATES WITH SWITCHCRAFT PART NO. 250 PLUG.
- MOUNTING HOLE:  $\varnothing 0.938$
- MATERIALS:  
HOUSING: ZINC ALLOY, SATIN NICKEL PLATED  
PLUG HOUSING: THERMOPLASTIC, BLACK  
LATCH: THERMOPLASTIC, RED  
LATCH RELEASE: ZINC ALLOY, NICKEL PLATED  
SLEEVE & TIP SPRINGS: NICKEL SILVER, ELECTRO-TIN PLATED  
TORSION & RETURN SPRINGS: MUSIC WIRE, TINNED
- THIS PRODUCT IS RoHS COMPLIANT.

REV	ECO NUMBER	DATE	BY	APVD
B	18079	3-5-93	TJK	TJK
REVISIONS				

- ★ STAR SYMBOL DENOTES CRITICAL DIMENSION
- UNLESS OTHERWISE SPECIFIED
- ALL DIMENSIONS IN INCHES  
- TWO PLACE DECIMALS  $\pm 0.01$   
- THREE PLACE DECIMALS  $\pm 0.005$   
- ANGLES  $\pm 1^\circ$   
- ALL DIA. CONCENTRIC WITHIN 0.005 T.I.R.
  - FEATURES ON THE SAME CENTERLINE MUST BE ALIGNED WITHIN  $\pm 0.002$
  - REMOVE ALL BURRS

DO NOT SCALE DRAWING

THIS DRAWING DESCRIBES A DESIGN CONSIDERED PROPRIETARY IN NATURE, DEVELOPED AND MANUFACTURED BY SWITCHCRAFT INC. AND IS RELEASED ON A CONFIDENTIAL BASIS FOR IDENTIFICATION PURPOSES ONLY.									
SIZE		WIDTH		MULT		LBS/M		TEMPER	
FINISH SPEC No.					MATERIAL SPEC No.				
FIRST USED ON				SCALE 2:1		<b>Switchcraft</b>			
DATE DRAWN	BY	CHKD		APVD					
1/24/12	TJK	TJK 1/24/12		TJK 1/24/12					
NAME "E" SERIES - 1/4" 2 CONDUCTOR LOCKING JACK. RoHS						PART No. E1111		REV B	

# Mouser Electronics

Authorized Distributor

Click to View Pricing, Inventory, Delivery & Lifecycle Information:

[Switchcraft:](#)

[E111L](#)