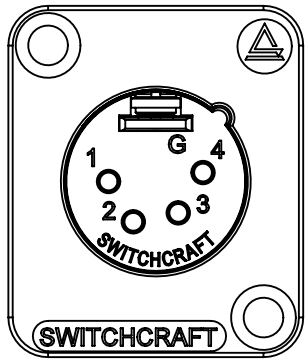
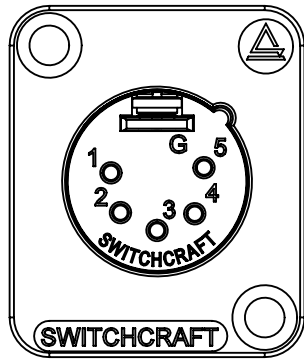


DE3M
3 PIN



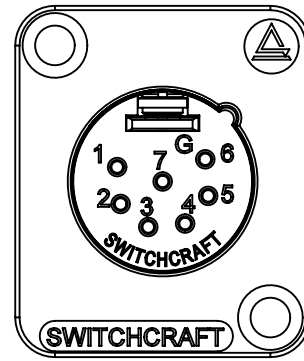
DE4M
4 PIN



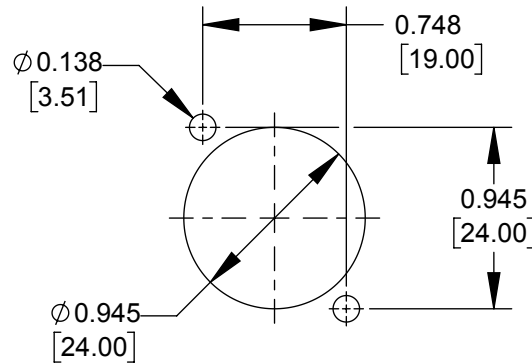
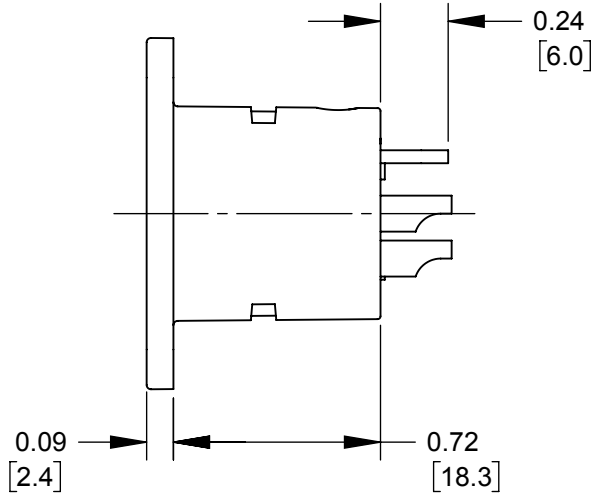
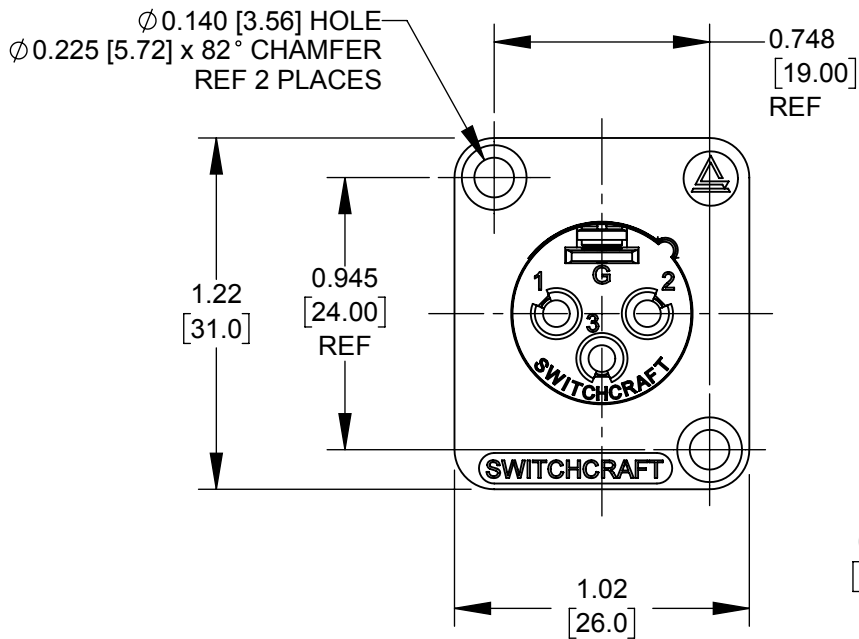
DE5M
5 PIN



DE6M
6 PIN



DE7M
7 PIN



DE **M**

NUMBER OF CONTACTS

3 - 3 CONTACTS
4 - 4 CONTACTS
5 - 5 CONTACTS
6 - 6 CONTACTS
7 - 7 CONTACTS

MALE CONNECTOR

CONTACT PLATING
BLANK - SILVER (STANDARD)
AU - GOLD

HOUSING FINISH
BLANK - NICKEL HOUSING WITH GREEN INSERT
B - BLACK EPOXY HOUSING WITH BLACK INSERT
W - WHITE EPOXY HOUSING WITH GREEN INSERT **(B)**

BLANK - BULK PACKAGING
PKG - INDIVIDUAL PACKAGE
WITH #4-40 x 0.50 LONG SCREWS

NOTES:

1. MATERIALS:

HOUSING - ZINC ALLOY, NICKEL PLATED OR BLACK PAINTED OR WHITE PAINTED
INSERT SCREW - STAINLESS STEEL
INSERT - THERMOPLASTIC, GREEN OR BLACK
CONTACT PINS - COPPER ALLOY, SILVER OR GOLD PLATED
SOLDER TERMINAL - COPPER ALLOY, TIN PLATED

2. THESE PARTS ARE RoHS COMPLIANT.

REV	ECO NUMBER	DATE	BY	APVD
B	27480	04-17-15	PC	TJK
A	27401	02-13-15	PC	TJK
REVISIONS				

UNLESS OTHERWISE SPECIFIED	
1. ALL DIMENSIONS IN INCHES [mm]	
- TWO PLACE DECIMALS ±0.02 [0.5]	
- THREE PLACE DECIMALS ±0.005 [0.13]	
DO NOT SCALE DRAWING	

THIS DRAWING DESCRIBES A DESIGN CONSIDERED PROPRIETARY IN NATURE, DEVELOPED AND MANUFACTURED BY SWITCHCRAFT INC. AND IS RELEASED ON A CONFIDENTIAL BASIS FOR IDENTIFICATION PURPOSES ONLY.									
SIZE		WIDTH		MULT		LBS/M		TEMPER	
FINISH					MATERIAL				
SPEC No.					SPEC No.				
FIRST USED ON				SCALE		Switchcraft®			
				3:2					
DATE DRAWN		BY	CHKD	APVD					
12-19-12		SRC	SRC	TJK					
		12-19-12		2-13-15		SHEET 1 OF 1			
NAME D SERIES MALE QG WITH EH SERIES MOUNTING					PART No. DE3M - DE7M SERIES				REV B

Mouser Electronics

Authorized Distributor

Click to View Pricing, Inventory, Delivery & Lifecycle Information:

[Switchcraft:](#)

[DE4MW](#)