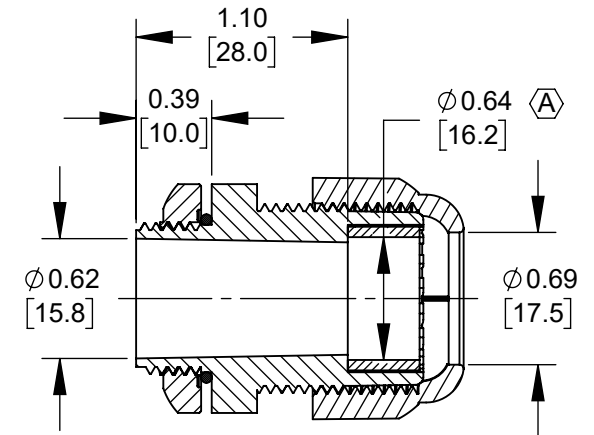
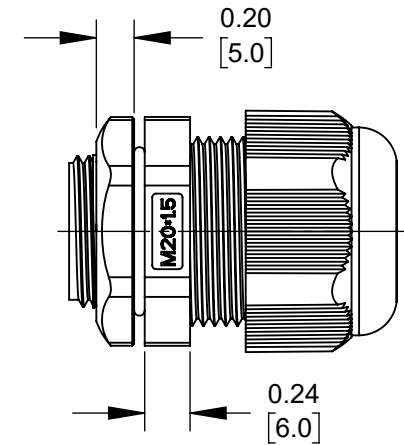
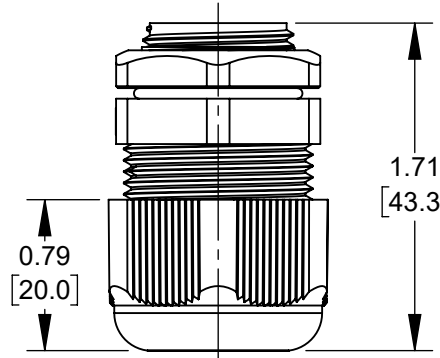
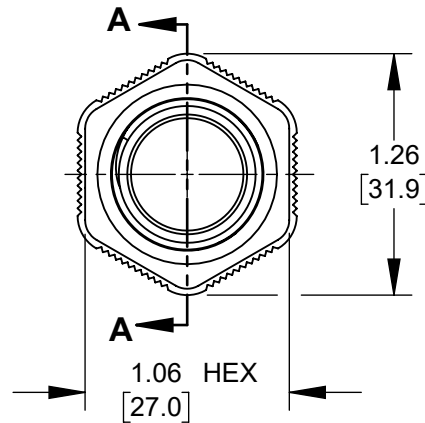


NOTES:

1. CABLE RANGE: $\varnothing 0.315-0.630$ [8.0-16.0].
2. RECOMMENDED MOUNTING HOLE: $\varnothing 0.813$ [20.64].
- Ⓑ 3. IP68 RATED WHEN PROPERLY ASSEMBLED.
IMMERSED IN 1.8M WATER FOR 24 HOURS.
4. ALL PARTS SHIPPED ASSEMBLED.
5. MATERIALS:
SEAL NUT, CLAMP NUT, HEX NUT -
BLACK, THERMOPLASTIC UL746C (F1) UV RATED Ⓒ
O-RING AND SEAL RING - BLACK, SILICONE.
6. THIS PRODUCT IS RoHS COMPLIANT.



SECTION A-A

CUSTOMER DRAWING

					<div>UNLESS OTHERWISE SPECIFIED</div> <div>1. ALL DIMENSIONS IN INCHES [mm]</div> <div>- TWO PLACE DECIMALS ±0.02 [0.5]</div> <div>- THREE PLACE DECIMALS ±0.005 [0.13]</div>	THIS DRAWING DESCRIBES A DESIGN CONSIDERED PROPRIETARY IN NATURE, DEVELOPED AND MANUFACTURED BY SWITCHCRAFT INC. AND IS RELEASED ON A CONFIDENTIAL BASIS FOR IDENTIFICATION PURPOSES ONLY.						
						SIZE	WIDTH	MULT	LBS/M	TEMPER		
						FINISH			MATERIAL			
						SPEC No.			SPEC No.			
C	28375	03/30/21	PC	TJK		FIRST USED ON		SCALE		<div>Switchcraft®</div>		
B	28315	09/09/20	PC	TJK			1:1					
A	28308	07/31/20	PC	TJK	DATE DRAWN	BY	CHKD	APVD				
					5/4/20	FM	FM	TJK				
							5/4/20	7/10/20				
REV	ECO NUMBER	DATE	BY	APVD	NAME M20 X 1.5 CABLE GLAND, CABLE RANGE Ø8.0 - 16.0mm					PART No. CGM20N63		REV C
REVISIONS					DO NOT SCALE DRAWING							

Mouser Electronics

Authorized Distributor

Click to View Pricing, Inventory, Delivery & Lifecycle Information:

[Switchcraft:](#)

[CGM20N63](#)