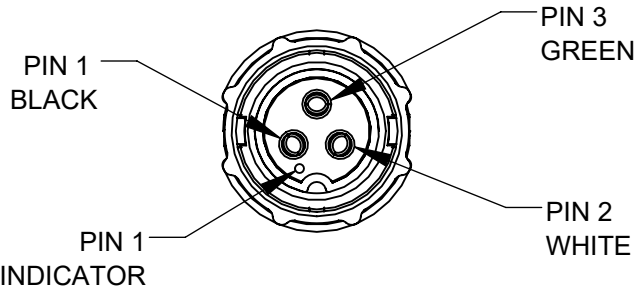


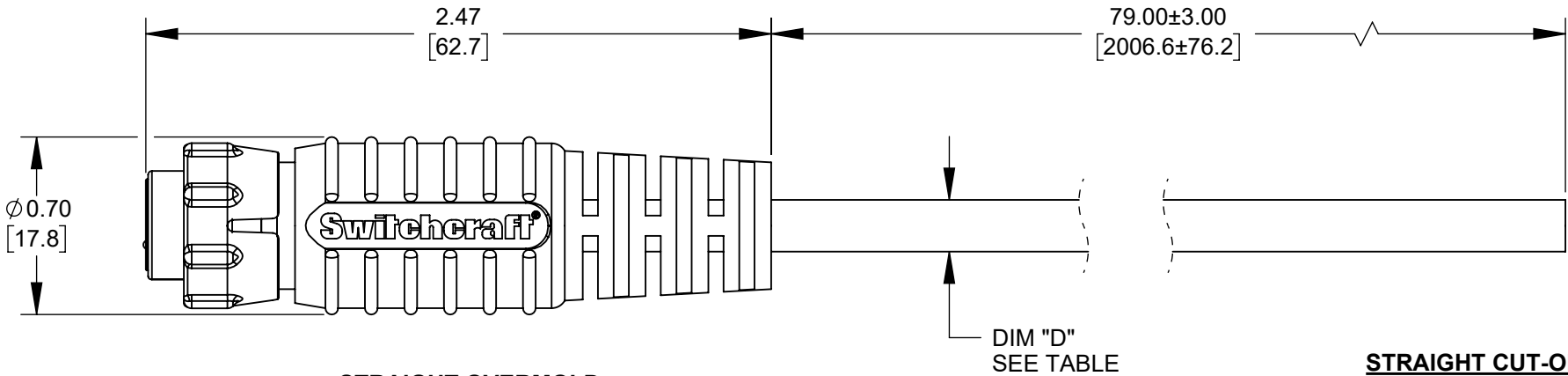
CAEN3C2F1607990  
2-PIN FEMALE

2 CONDUCTOR  
16 AWG CABLE  
BLACK PVC



CAEN3C3F1607990  
3-PIN FEMALE

3 CONDUCTOR  
16 AWG CABLE  
BLACK PVC



**STRAIGHT OVERMOLD**  
**FEMALE EN3C - 16GA CONTACTS**  
OVERMOLD - THERMOPLASTIC, BLACK  
CONNECTOR - THERMOPLASTIC, BLACK  
CONTACTS - COPPER ALLOY, GOLD PLATED

PART NUMBER	NUMBER OF CONTACTS	DIM "D" CABLE DIAMETER
CAEN3C2F1607990	2	Ø0.204 [5.18] REF
CAEN3C3F1607990	3	Ø0.275 [6.99] REF

CUSTOMER DRAWING

NOTES:

1. THIS PRODUCT IS RoHS COMPLIANT.

					<div>UNLESS OTHERWISE SPECIFIED</div> <div>1. ALL DIMENSIONS IN INCHES [mm]</div> <div>- TWO PLACE DECIMALS ±0.02 [0.5]</div> <div>- THREE PLACE DECIMALS ±0.005 [0.13]</div>	THIS DRAWING DESCRIBES A DESIGN CONSIDERED PROPRIETARY IN NATURE, DEVELOPED AND MANUFACTURED BY SWITCHCRAFT INC. AND IS RELEASED ON A CONFIDENTIAL BASIS FOR IDENTIFICATION PURPOSES ONLY.											
						SIZE	WIDTH		MULT		LBS/M		TEMPER				
						FINISH SPEC No.						MATERIAL SPEC No.					
						FIRST USED ON				SCALE 3:2		Switchcraft®					
						DATE DRAWN 8-27-21	BY CC	CHKD CC 8-27-21		APVD TJK 10-7-21							
A	28435	10-14-21	PC	TJK													
REV	ECO NUMBER	DATE	BY	APVD							NAME FEMALE EN3C OVERMOLDED TO 16 AWG CABLE, SCO		PART No. CAEN3C_F1607990		REV A		
REVISIONS					DO NOT SCALE DRAWING												

# Mouser Electronics

Authorized Distributor

Click to View Pricing, Inventory, Delivery & Lifecycle Information:

Switchcraft:

[CAEN3C2F1607990](#) [CAEN3C3F1607990](#)