

5/8 O.D. WASHER
STEEL, NICKEL PLATED

3/8 -32 THREAD

1/2 HEX LOCKNUT
BRASS, NICKEL PLATED

NOTES:

1. MATERIALS:

FRAME - STEEL, NICKEL PLATED

BUSHING - BRASS, NICKEL PLATED

SPRING - NICKEL SILVER, SPRING TEMPER

CONTACTS - FINE SILVER

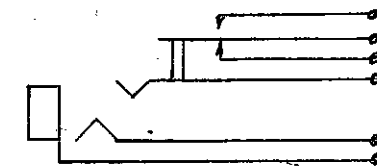
SPACERS - PHENOLIC

TERMINALS - HOT SOLDER DIPPED LEAD FREE

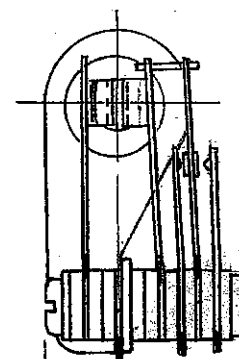
TWIN NUT & SCREWS - STEEL, NICKEL PLATED

2. ALL DIMENSIONS SHOWN ARE
FOR REFERENCE ONLY.

3. THIS PRODUCT IS RoHS COMPLIANT.



SCHEMATIC CIRCUIT



938 MAX 1/16 MAX

CUSTOMER DRAWING

| DATE | BY | REVISION | ISS |
|--------|----|----------|-----|
| 6-5-08 | TO | 25884 | A |

| | | | |
|---|--|---------------|----------------------|
| THIS DRAWING DESCRIBES A DESIGN CONSIDERED PROPRIETARY IN NATURE, DEVELOPED AND MANUFACTURED BY SWITCHCRAFT, INC., AND IS RELEASED ON A CONFIDENTIAL BASIS FOR IDENTIFICATION PURPOSE ONLY. | | | |
| UNLESS OTHERWISE SPECIFIED: | | DRAWN BY | DATE |
| 1. DECIMAL DIMENSIONS ± .005 | | TO | 5/31/13 |
| 2. FRACTIONAL DIMENSIONS ± 1/64 | | CHECKED BY | DATE |
| 3. ANGLES ± 1/2° | | TJC | 5/31/13 |
| 4. ALL DIA'S CONCENTRIC WITHIN .002 T.I.R. | | APPROVED BY | DATE |
| 5. ALL DIMENSIONS IN INCHES | | TJC | 5/31/13 |
| 6. FOR THREADS USE UNIFIED PLUG AND RING GAGES ONLY. | | SCALE | FINISH |
| 7. REMOVE ALL BURRS. | | FULL | |
| 8. PART TO BE FABRICATED AS SPECIFIED. MAKE NO DIMENSIONAL ALLOWANCES FOR APPLIED FINISHES, I.E., PLATING, PAINTING, ETC. | | FIRST USED ON | PER FINISH SPEC. NO. |
| 9. HOLES OR BORE CENTERLINE MUST BE ALIGNED WITHIN ±.002 | | NAME | MATERIAL |
| DO NOT SCALE DRAWING | | SF JAX, RoHS | PER MAT. SPEC. NO. |
| | | PART NO. | ISSUE |
| | | C55BX | A |
| | | SHEET 1 OF 1 | |

Mouser Electronics

Authorized Distributor

Click to View Pricing, Inventory, Delivery & Lifecycle Information:

[Switchcraft:](#)

[C55BX](#)