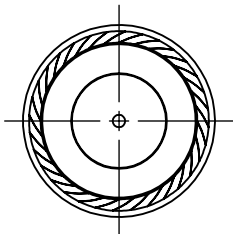
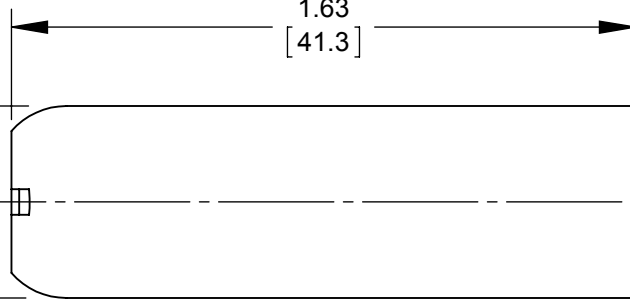
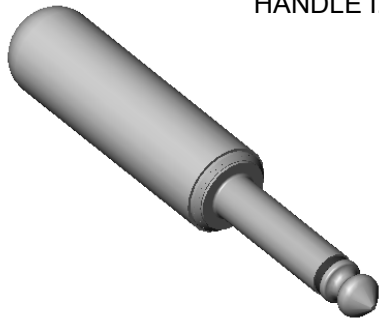


Ø 0.50
[12.7]

Ø 0.297 REF
[7.54]
HANDLE I.D.



SLEEVE TERMINAL
AND CABLE CLAMP

7/16-20 UNF
THREADS

TIP TERMINAL

0.063
[1.60]
REF

1.20
[30.6]

0.98
[25.0]

0.85
[21.5]

Ø 0.25
[6.3]

Ø 0.47
[11.9]

SLEEVE

TIP

NOTES:

1. MATERIALS:
TIP ROD & PLUG BODY - BRASS, NICKEL PLATED
TERMINALS & CABLE CLAMP - BRASS, TIN PLATED
SCREWS - STEEL, NICKEL PLATED
INSULATORS - PHENOLIC & MYLAR
HANDLE - THERMOPLASTIC, RED

2. THIS PRODUCT IS RoHS COMPLIANT.

CUSTOMER DRAWING

					<div>UNLESS OTHERWISE SPECIFIED</div> <div>1. ALL DIMENSIONS IN INCHES</div> <div>- TWO PLACE DECIMALS ±0.02</div> <div>- THREE PLACE DECIMALS ±0.005</div>	THIS DRAWING DESCRIBES A DESIGN CONSIDERED PROPRIETARY IN NATURE, DEVELOPED AND MANUFACTURED BY SWITCHCRAFT INC. AND IS RELEASED ON A CONFIDENTIAL BASIS FOR IDENTIFICATION PURPOSES ONLY.							
						SIZE	WIDTH		MULT	LBS/M	TEMPER		
						FINISH				MATERIAL			
						SPEC No.				SPEC No.			
						FIRST USED ON			SCALE		<div>Switchcraft®</div>		
						DATE DRAWN	BY	CHKD	APVD				
A	27792	10-14-16	TO	TJK		11-14-16	TO	TO	TJK				
REV	ECO NUMBER	DATE	BY	APVD	NAME				PART No.		REV		
REVISIONS					DO NOT SCALE DRAWING		2 CONDUCTOR COMMERCIAL PHONE PLUG, RoHS				C245X		A

SolidWorks CAD File



Mouser Electronics

Authorized Distributor

Click to View Pricing, Inventory, Delivery & Lifecycle Information:

[Switchcraft:](#)

[C245X](#)