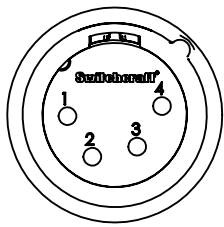
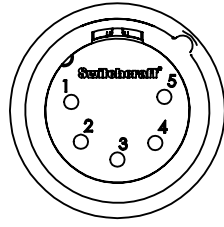


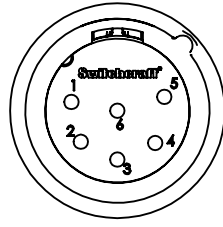
3 PIN



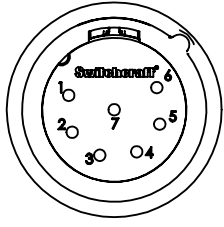
4 PIN



5 PIN



6 PIN



7 PIN

CONTACT PINS AS VIEWED FACING MALE CONNECTOR

AAA

M

Z

SERIES: **Q-G° CONNECTOR**

OF CONTACT PINS: **3, 4, 5, 6, OR 7**

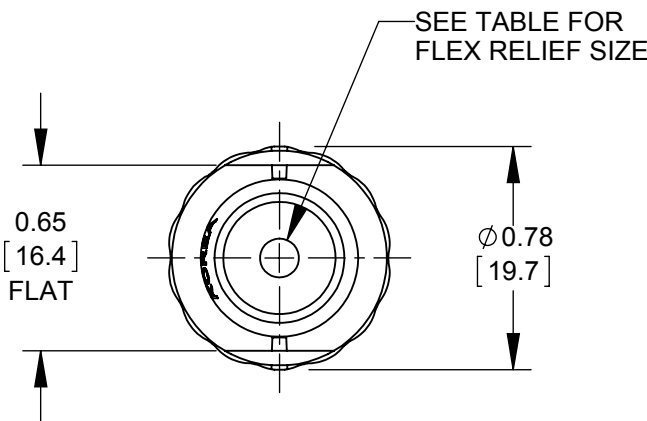
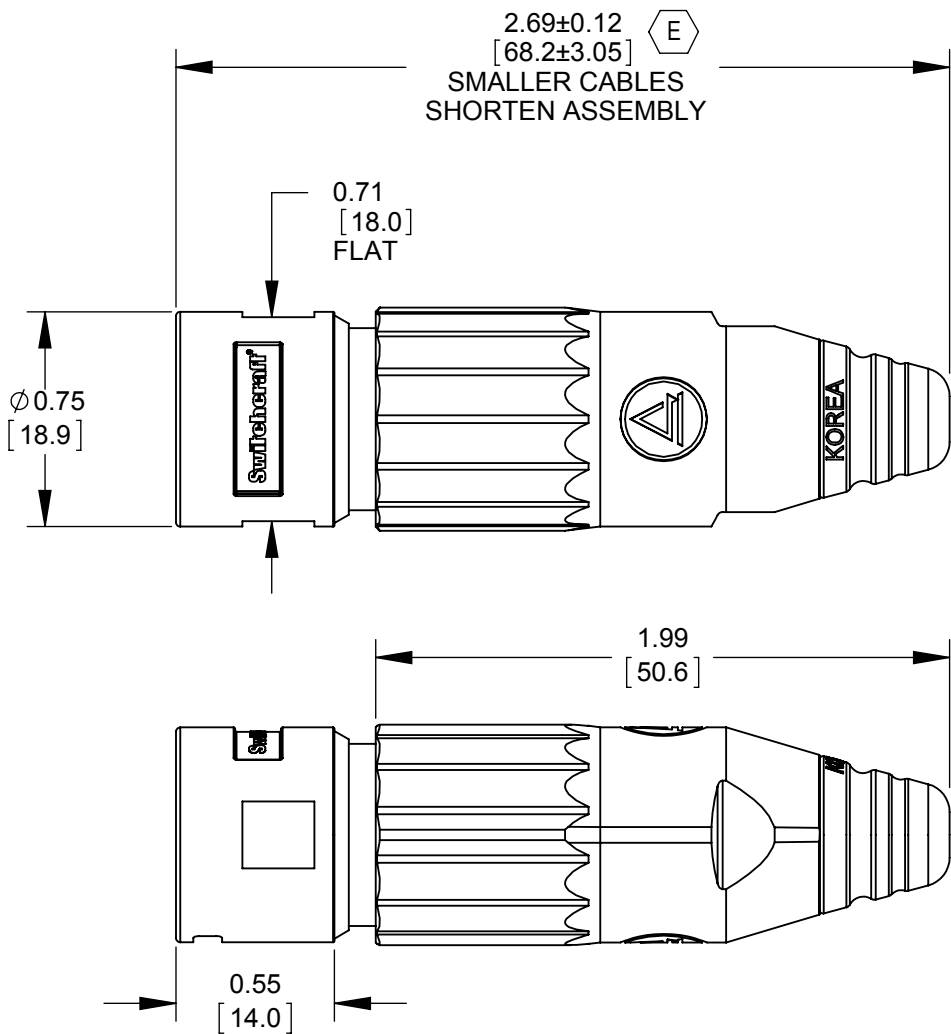
GENDER: **MALE**

HANDLE STYLE:
BLANK - METAL HANDLE (SEE FINISH BELOW)
P - PLASTIC HANDLE, BLACK

FINISH:
BLANK - NICKEL HANDLE & CONNECTOR, WITH BLACK FLEX RELIEF & GREEN INSERT
B - BLACK HANDLE & CONNECTOR, WITH BLACK FLEX RELIEF & BLACK INSERT
W - WHITE HANDLE & NICKEL FINISH CONNECTOR WITH WHITE FLEX RELIEF & GREEN INSERT

CONTACT PIN PLATING:
BLANK - SILVER
AU - GOLD

FLEX RELIEF STYLE:
BLANK - FLEX RELIEF I.D. 0.135 [3.4mm]
RECOMMENDED CABLE O.D. 0.100 - 0.220 [2.5mm - 5.6mm]
L - FLEX RELIEF I.D. 0.225 [5.7mm]
RECOMMENDED CABLE O.D. 0.220 - 0.285 [5.6mm - 7.2mm]



CUSTOMER DRAWING

- NOTES:
- CONNECTORS AND HANDLES ARE SHIPPED SIDE BY SIDE OR IN BULK.
 - MATERIALS:

E

HANDLE METAL - ZINC ALLOY, NICKEL PLATED OR BLACK OR WHITE PAINTED.

E

HANDLE PLASTIC - THERMOPLASTIC, BLACK
CABLE CLAMP - THERMOPLASTIC, BLACK
FLEX RELIEF - THERMOPLASTIC, BLACK OR WHITE.
HOUSING - ZINC ALLOY, NICKEL PLATED OR BLACK SATIN CHROME PLATED
INSULATOR - THERMOPLASTIC, GREEN OR BLACK
GROUND TERMINAL - SPECIAL COPPER ALLOY
CONTACT PINS - COPPER ALLOY, SILVER PLATED OR GOLD PLATED
 - THESE PRODUCTS ARE RoHS COMPLIANT.

REV	ECO NUMBER	DATE	BY	APVD
F	27473	03/27/15	PC	TJK
E	27081	01/25/13	BL	TJK
D	25711	10-17-07	JGK	TJK
C	24940	3-11-05	JL	TJK
B	24552	10-13-03	JL	BRH
A	24446	8-12-03	JL	BRH
REVISIONS				

☆ STAR SYMBOL DENOTES CRITICAL DIMENSION

UNLESS OTHERWISE SPECIFIED

1. ALL DIMENSIONS IN INCHES
- TWO PLACE DECIMALS ±0.01
- THREE PLACE DECIMALS ±0.005
- ANGLES ±1°
- ALL DIA. CONCENTRIC WITHIN 0.005 T.I.R.

2. FEATURES ON THE SAME CENTERLINE
MUST BE ALIGNED WITHIN ±0.002

3. REMOVE ALL BURRS

DO NOT SCALE DRAWING

THIS DRAWING DESCRIBES A DESIGN CONSIDERED PROPRIETARY IN NATURE, DEVELOPED AND MANUFACTURED BY SWITCHCRAFT INC. AND IS RELEASED ON A CONFIDENTIAL BASIS FOR IDENTIFICATION PURPOSES ONLY.									
SIZE		WIDTH		MULT		LBS/M		TEMPER	
FINISH SPEC No.					MATERIAL SPEC No.				
FIRST USED ON				SCALE 1.5:1		Switchcraft®			
DATE DRAWN	BY	CHKD		APVD					
03-10-03	BRH	BRH		BRH					
		8-12-03		8-12-03		SHEET 1 OF 1			
NAME					PART No.				REV
MALE XLR CONNECTOR, RoHS					AAA_MZ SERIES				F

Mouser Electronics

Authorized Distributor

Click to View Pricing, Inventory, Delivery & Lifecycle Information:

[Switchcraft:](#)

[AAA4MZ](#) [AAA6MZ](#) [AAA3MPZ](#) [AAA3MBAUZ](#) [AAA3MPBZ](#) [AAA3MZ](#) [AAA3MBZ](#) [AAA4MBAUZ](#) [AAA4MBZ](#)
[AAA4MPZ](#) [AAA5MBAUZ](#) [AAA5MBZ](#) [AAA5MPZ](#) [AAA5MZ](#) [AAA6MBAUZ](#) [AAA6MBZ](#) [AAA6MPZ](#) [AAA7MBAUZ](#)
[AAA7MBZ](#) [AAA7MPZ](#) [AAA7MZ](#) [AAA5MWZ](#) [AAA4MWZ](#) [AAA3MWZ](#) [AAA5MAUZ](#) [AAA6MWZ](#) [AAA7MWZ](#)