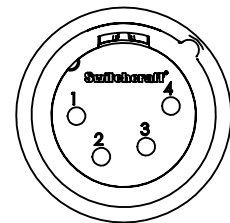
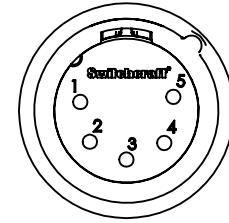


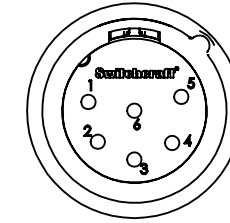
3 PIN



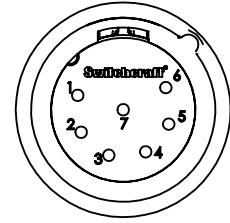
4 PIN



5 PIN



6 PIN



7 PIN

CONTACT PINS AS VIEWED FACING MALE CONNECTOR

AAA

M

Z

SERIES: **Q-G° CONNECTOR**

OF CONTACT PINS: **3, 4, 5, 6, OR 7**

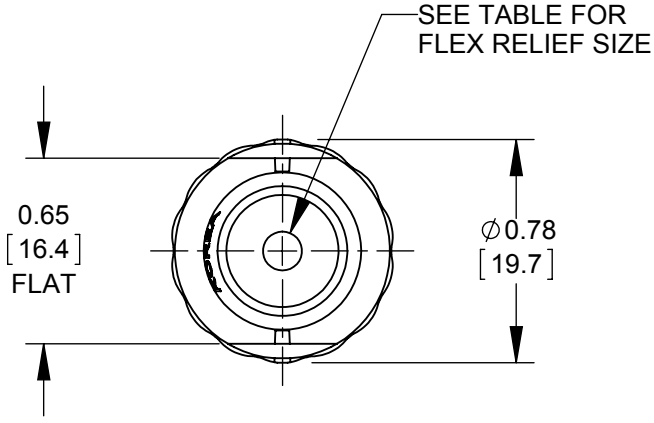
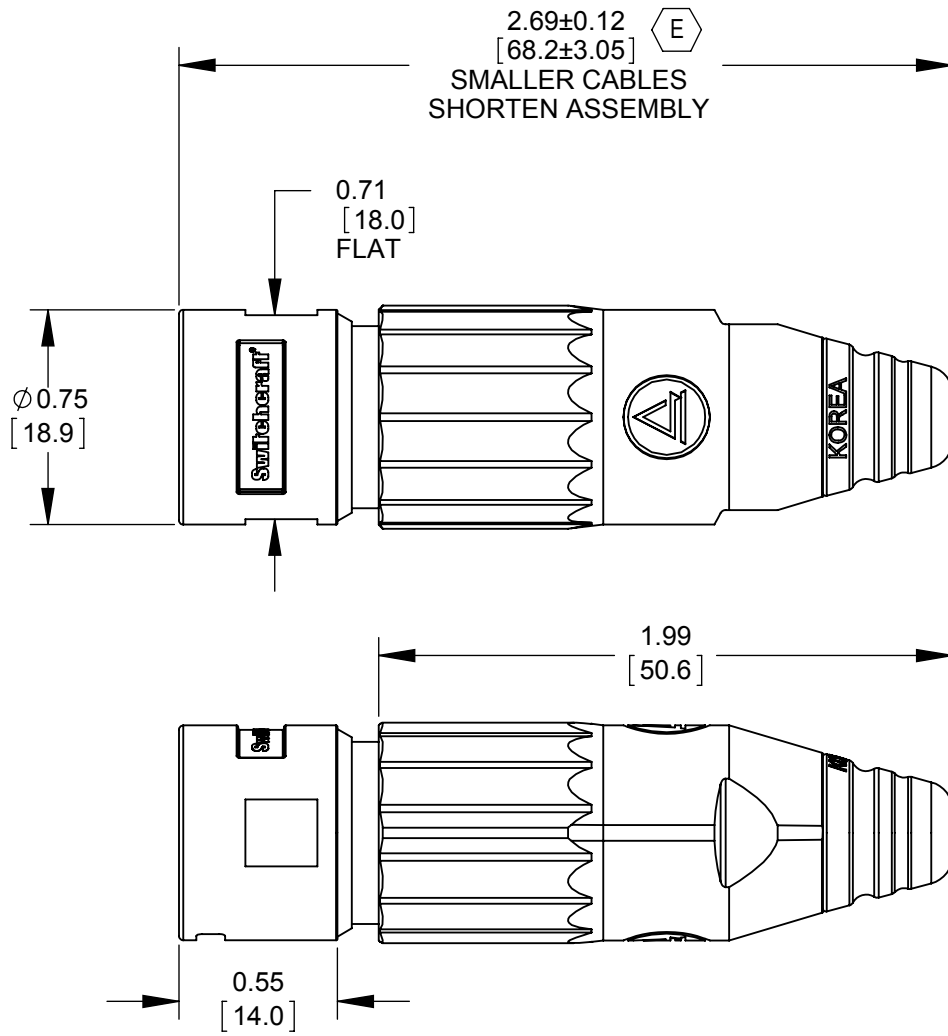
GENDER: **MALE**

HANDLE STYLE:
BLANK - METAL HANDLE (SEE FINISH BELOW)
P - PLASTIC HANDLE, BLACK

FINISH:
BLANK - NICKEL HANDLE & CONNECTOR, WITH BLACK FLEX RELIEF & GREEN INSERT
B - BLACK HANDLE & CONNECTOR, WITH BLACK FLEX RELIEF & BLACK INSERT
W - WHITE HANDLE & NICKEL FINISH CONNECTOR WITH WHITE FLEX RELIEF & GREEN INSERT

CONTACT PIN PLATING:
BLANK - SILVER
AU - GOLD

FLEX RELIEF STYLE:
BLANK - FLEX RELIEF I.D. 0.135 [3.4mm] RECOMMENDED CABLE O.D. 0.100 - 0.220 [2.5mm - 5.6mm]
L - FLEX RELIEF I.D. 0.225 [5.7mm] RECOMMENDED CABLE O.D. 0.220 - 0.285 [5.6mm - 7.2mm]



CUSTOMER DRAWING

- NOTES:
- CONNECTORS AND HANDLES ARE SHIPPED SIDE BY SIDE OR IN BULK.
 - MATERIALS:
E HANDLE METAL - ZINC ALLOY, NICKEL PLATED OR BLACK OR WHITE PAINTED.
HANDLE PLASTIC - THERMOPLASTIC, BLACK
CABLE CLAMP - THERMOPLASTIC, BLACK
FLEX RELIEF - THERMOPLASTIC, BLACK OR WHITE.
HOUSING - ZINC ALLOY, NICKEL PLATED OR BLACK SATIN CHROME PLATED
INSULATOR - THERMOPLASTIC, GREEN OR BLACK
GROUND TERMINAL - SPECIAL COPPER ALLOY
CONTACT PINS - COPPER ALLOY, SILVER PLATED OR GOLD PLATED
 - THESE PRODUCTS ARE RoHS COMPLIANT.

					☆ STAR SYMBOL DENOTES CRITICAL DIMENSION	THIS DRAWING DESCRIBES A DESIGN CONSIDERED PROPRIETARY IN NATURE, DEVELOPED AND MANUFACTURED BY SWITCHCRAFT INC. AND IS RELEASED ON A CONFIDENTIAL BASIS FOR IDENTIFICATION PURPOSES ONLY.										
F	27473	03/27/15	PC	TJK	<div>UNLESS OTHERWISE SPECIFIED</div> <div>1. ALL DIMENSIONS IN INCHES - TWO PLACE DECIMALS ±0.01 - THREE PLACE DECIMALS ±0.005 - ANGLES ±1° - ALL DIA. CONCENTRIC WITHIN 0.005 T.I.R.</div> <div>2. FEATURES ON THE SAME CENTERLINE MUST BE ALIGNED WITHIN ±0.002</div> <div>3. REMOVE ALL BURRS</div>	SIZE		WIDTH		MULT		LBS/M		TEMPER		
E	27081	01/25/13	BL	TJK		FINISH SPEC No.					MATERIAL SPEC No.					
D	25711	10-17-07	JGK	TJK		FIRST USED ON				SCALE 1.5:1		<div>Switchcraft®</div> <div>SHEET 1 OF 1</div>				
C	24940	3-11-05	JL	TJK		DATE DRAWN	BY	CHKD	APVD							
B	24552	10-13-03	JL	BRH		03-10-03	BRH	BRH	BRH							
A	24446	8-12-03	JL	BRH												
REV	ECO NUMBER	DATE	BY	APVD							PART No.					
REVISIONS					DO NOT SCALE DRAWING	MALE XLR CONNECTOR, RoHS					AAA_MZ SERIES					REV F

Mouser Electronics

Authorized Distributor

Click to View Pricing, Inventory, Delivery & Lifecycle Information:

Switchcraft:

[AAA4MZ](#) [AAA4MWZ](#)