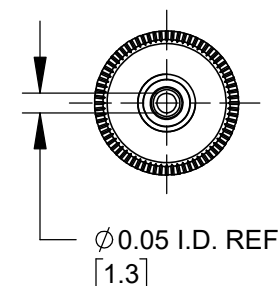
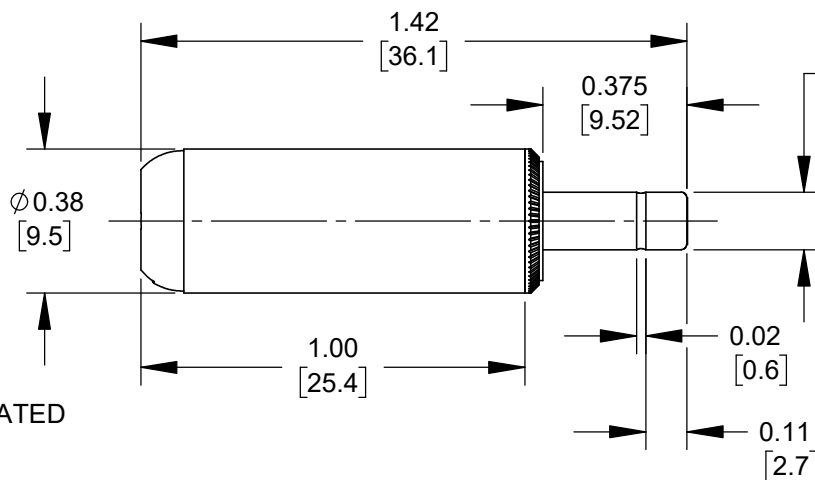
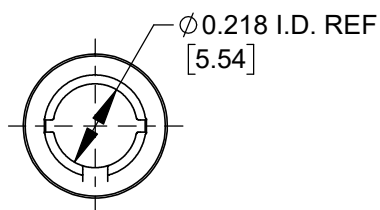


PART NUMBER	HANDLE COLOR
860Z	BLACK
865Z	RED



NOTES:

1. MATERIALS:

CONDUCTORS - COPPER ALLOY, NICKEL PLATED
 TERMINALS - COPPER ALLOY, TIN PLATED
 INSULATORS & HANDLE - THERMOPLASTIC

2. THIS PRODUCT IS RoHS COMPLIANT.

CUSTOMER DRAWING

					<div>UNLESS OTHERWISE SPECIFIED</div> <div>1. ALL DIMENSIONS IN INCHES [mm]</div> <div>- TWO PLACE DECIMALS ±0.02 [0.5]</div> <div>- THREE PLACE DECIMALS ±0.005 [0.13]</div>	THIS DRAWING DESCRIBES A DESIGN CONSIDERED PROPRIETARY IN NATURE, DEVELOPED AND MANUFACTURED BY SWITCHCRAFT INC. AND IS RELEASED ON A CONFIDENTIAL BASIS FOR IDENTIFICATION PURPOSES ONLY.					
						SIZE *	WIDTH *	MULT *	LBS/M *	TEMPER *	
						FINISH SPEC No. *			MATERIAL SPEC No. *		
						FIRST USED ON *		SCALE 2:1		<div>Switchcraft®</div>	
						DATE DRAWN 11/05/19	BY AM	CHKD AM 03/08/24	APVD AM 03/08/24		
A	28644	02/14/24	PC	TJK		SHEET 1 OF 1					
REV	ECO NUMBER	DATE	BY	APVD	PART No. 860Z-865Z						
REVISIONS					DO NOT SCALE DRAWING	NAME Ø 0.05 [1.3]mm x 0.375 LONG IMPROVED POWER PLUG, RoHS					REV A

DO NOT SCALE DRAWING

SolidWorks CAD File



Mouser Electronics

Authorized Distributor

Click to View Pricing, Inventory, Delivery & Lifecycle Information:

[Switchcraft:](#)

[860Z](#)