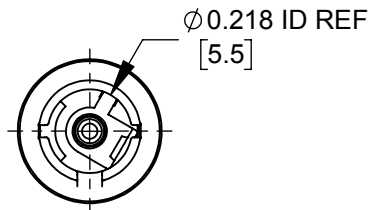
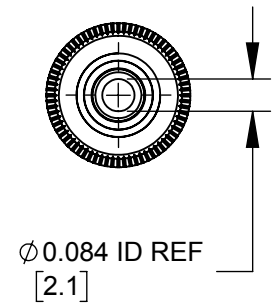
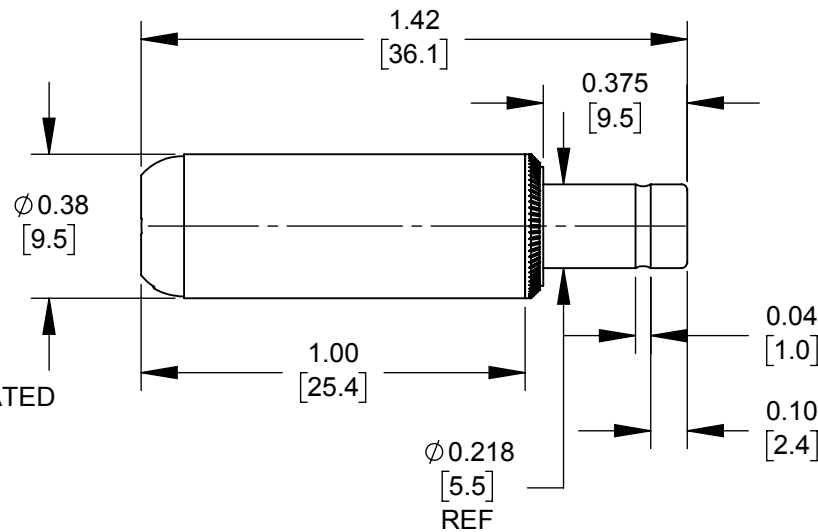


PART NUMBER	HANDLE COLOR
762Z	BLACK
763Z	RED



NOTES:

- MATERIALS:
CONDUCTORS - COPPER ALLOY, NICKEL PLATED
TERMINALS - COPPER ALLOY, TIN PLATED
INSULATORS & HANDLE - THERMOPLASTIC
- THIS PRODUCT IS RoHS COMPLIANT.



CUSTOMER DRAWING

					<div>UNLESS OTHERWISE SPECIFIED</div> <div>1. ALL DIMENSIONS IN INCHES [mm]</div> <div>- TWO PLACE DECIMALS ±0.02 [0.5]</div> <div>- THREE PLACE DECIMALS ±0.005 [0.13]</div>	THIS DRAWING DESCRIBES A DESIGN CONSIDERED PROPRIETARY IN NATURE, DEVELOPED AND MANUFACTURED BY SWITCHCRAFT INC. AND IS RELEASED ON A CONFIDENTIAL BASIS FOR IDENTIFICATION PURPOSES ONLY.					
						SIZE *	WIDTH *	MULT *	LBS/M *	TEMPER *	
						FINISH *			MATERIAL *		
						SPEC No. *			SPEC No. *		
						FIRST USED ON *		SCALE 2:1		<div>Switchcraft®</div>	
						DATE DRAWN	BY	CHKD *	APVD *		
0A	FIRST DRAWN	10/23/19	AM	*		10/23/19	AM	*	*		
REV	ECO NUMBER	DATE	BY	APVD							
REVISIONS					DO NOT SCALE DRAWING	NAME Ø 0.084 [2.1]mm X 0.375 LONG IMPROVED POWER PLUG, RoHS			PART No. 762Z-763Z		REV 0A

SolidWorks CAD File



Mouser Electronics

Authorized Distributor

Click to View Pricing, Inventory, Delivery & Lifecycle Information:

[Switchcraft:](#)

[762Z](#)