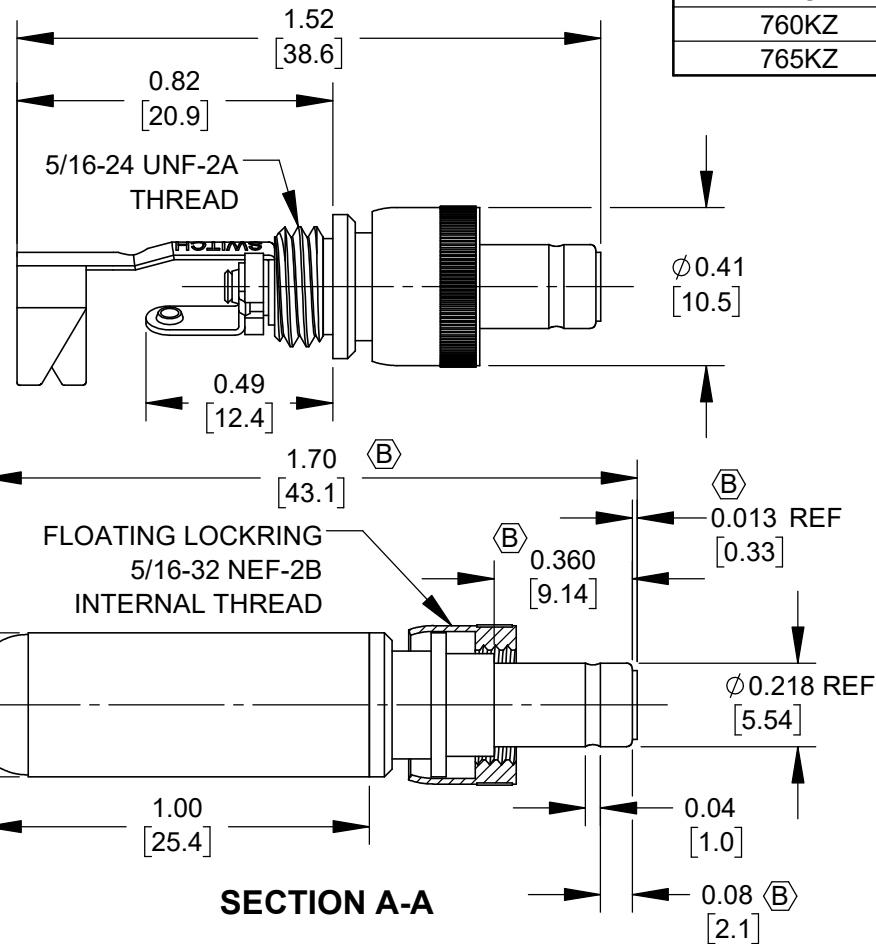


NOTES:

1. MATERIALS:

CONDUCTORS & LOCKRING - BRASS, NICKEL PLATED
 TERMINALS - BRASS, TIN PLATED
 INSULATORS & HANDLE - THERMOPLASTIC

2. THIS PRODUCT IS RoHS COMPLIANT.



PART NUMBER	HANDLE COLOR
760KZ	BLACK
765KZ	RED

CUSTOMER DRAWING

					THIS DRAWING DESCRIBES A DESIGN CONSIDERED PROPRIETARY IN NATURE, DEVELOPED AND MANUFACTURED BY SWITCHCRAFT INC. AND IS RELEASED ON A CONFIDENTIAL BASIS FOR IDENTIFICATION PURPOSES ONLY.				
					SIZE *	WIDTH *	MULT *	LBS/M *	TEMPER *
					FINISH *	MATERIAL *			
					SPEC No. *	SPEC No. *			
					FIRST USED ON *	SCALE 2:1			
B	28735	04/21/25	PC	TJK	DATE DRAWN	BY	CHKD	APVD	Switchcraft®
A	28644	02/14/24	PC	TJK	10/24/19	AM	02/28/24	02/28/24	
REV	ECO NUMBER	DATE	BY	APVD	NAME			PART No.	REV
REVISIONS					DO NOT SCALE DRAWING			760KZ-765KZ	B
					SolidWorks CAD File				

SolidWorks CAD File



Mouser Electronics

Authorized Distributor

Click to View Pricing, Inventory, Delivery & Lifecycle Information:

[Switchcraft:](#)

[760KZ](#)