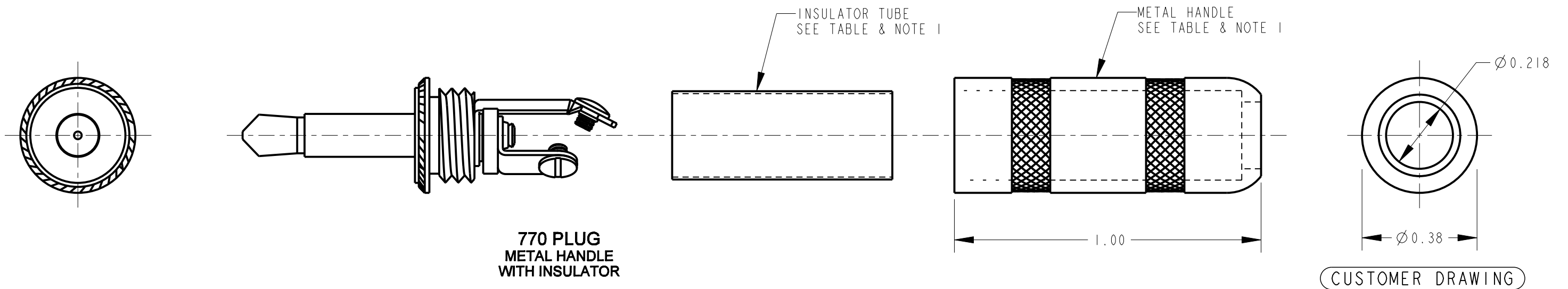


| PART NUMBER | HANDLE - MATERIAL AND FINISH                      |
|-------------|---|
| 740         | THERMOPLASTIC, BLACK                              |
| 745         | THERMOPLASTIC, RED                                |
| 770         | BRASS, NICKEL PLATED<br>WITH MYLAR INSULATOR TUBE |



NOTES:

- SCREWS, HANDLE AND INSULATOR SHIPPED UNASSEMBLED.
- MATES WITH SWITCHCRAFT #41 JACK.
- MATERIALS:  
PLUG BODY - BRASS, NICKEL PLATED  
TIP ROD - BRASS, NICKEL PLATED  
PLUG INSULATORS - PHENOLIC & MYLAR  
TERMINALS - BRASS, TIN PLATED  
SCREWS - BRASS, NICKEL PLATED  
HANDLE AND INSULATOR TUBE - SEE TABLE
- THESE PRODUCTS ARE RoHS COMPLIANT.

|           |            |          |     |      |   |  |           |                       |                      |            |                                 |  |        |          |  |
|-----------|------------|----------|-----|------|---|--|-----------|-----------------------|----------------------|------------|---------------------------------|--|--------|----------|--|
|           |            |          |     |      | ★ STAR SYMBOL DENOTES CRITICAL DIMENSION  | THIS DRAWING DESCRIBES A DESIGN CONSIDERED PROPRIETARY IN NATURE, DEVELOPED AND MANUFACTURED BY SWITCHCRAFT INC. AND IS RELEASED ON A CONFIDENTIAL BASIS FOR IDENTIFICATION PURPOSES ONLY. |           |                       |                      |            |                                 |  |        |          |  |
|           |            |          |     |      | UNLESS OTHERWISE SPECIFIED<br><br>1. ALL DIMENSIONS IN INCHES<br>- TWO PLACE DECIMALS ±0.01<br>- THREE PLACE DECIMALS ±0.005<br>- ANGLES ±1°<br>- ALL DIA. CONCENTRIC WITHIN 0.005 T.I.R.<br><br>2. FEATURES ON THE SAME CENTERLINE<br>MUST BE ALIGNED WITHIN ±0.002<br><br>3. REMOVE ALL BURRS | SIZE   | WIDTH     |                       | MULT                 |            | LBS/M                           |  | TEMPER |          |  |
|           |            |          |     |      |   | FINISH<br>SPEC No.   |           |                       |                      |            | MATERIAL<br>SPEC No.            |  |        |          |  |
|           |            |          |     |      |   | FIRST USED ON  |           |                       | SCALE<br>3:1         |            | <b>Switchcraft</b> <sup>®</sup> |  |        |          |  |
| D         | 27210      | 10-18-13 | TO  | TJK  |   | DATE DRAWN<br>19-May-64  | BY<br>JRT | CHKD<br>CJD<br>7-6-64 | APVD<br>LG<br>7-7-64 | SHEET   OF |                                 |  |        |          |  |
| C         | 26777      | 5-23-11  | TJK | TJK  |   | NAME<br>TINI PLUG, 2 CONDUCTOR<br>WITH SCREW TERMINALS, RoHS   |           |                       |                      |            | PART No.<br>740 745 770         |  |        | REV<br>D |  |
| REV       | ECO NUMBER | DATE     | BY  | APVD | SHEET   OF  |  |           |                       |                      |            | REV                             |  |        |          |  |
| REVISIONS |            |          |     |      | DO NOT SCALE DRAWING  |  |           |                       |                      |            |                                 |  |        |          |  |

# Mouser Electronics

Authorized Distributor

Click to View Pricing, Inventory, Delivery & Lifecycle Information:

Switchcraft:

745 740 770