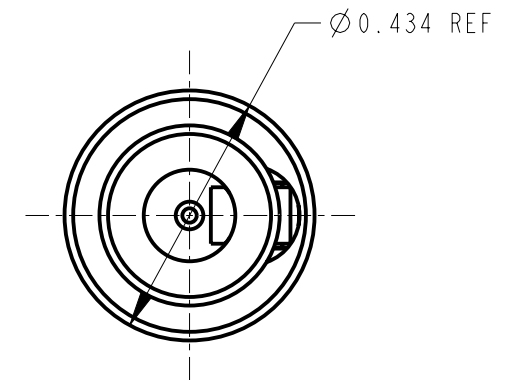


NOTE:

1. HARDWARE NOT SHOWN.



MATERIAL:

MOUNTING BUSHING: COPPER ALLOY, NICKEL PLATED.

HOUSING: LEXAN, BLACK.

PIN, SPRING AND TERMINALS: COPPER ALLOY, SILVER PLATED.

INSULATORS: PHENOLIC.

HARDWARE: HEX NUT: BRASS, NICKEL PLATED
FLAT WASHER: STEEL NICKEL PLATED.



CIRCUIT DIAGRAM

CUSTOMER DRAWING

★ STAR SYMBOL DENOTES CRITICAL DIMENSION

UNLESS OTHERWISE SPECIFIED

- ALL DIMENSIONS IN INCHES
-TWO PLACE DECIMALS ± 0.01
-THREE PLACE DECIMALS ± 0.005
-ANGLES $\pm 1^\circ$
-ALL DIA. CONCENTRIC WITHIN 0.005 T.I.R.

- FEATURES ON THE SAME CENTERLINE MUST BE ALIGNED WITHIN ± 0.002

- REMOVE ALL BURRS

DO NOT SCALE DRAWING

THIS DRAWING DESCRIBES A DESIGN CONSIDERED PROPRIETARY IN NATURE, DEVELOPED AND MANUFACTURED BY SWITCHCRAFT INC. AND IS RELEASED ON A CONFIDENTIAL BASIS FOR IDENTIFICATION PURPOSES ONLY.

SIZE		WIDTH		MULT		LBS/M		TEMPER	
FINISH SPEC No.					MATERIAL SPEC No.				
FIRST USED ON			SCALE 3:1		Switchcraft®				
DATE DRAWN	BY	CHKD	APVD						
22-Dec-98	RC	MW 12-22-98	MW 12-22-98		SHEET OF				
NAME MINIATURE POWER JACK					PART No. 732A			REV A	

REV	ECO NUMBER	DATE	BY	APVD
A	FIRST DRAWN	12-22-98	RC	MW
REVISIONS				

Mouser Electronics

Authorized Distributor

Click to View Pricing, Inventory, Delivery & Lifecycle Information:

[Switchcraft:](#)

[732A](#)