



5555 N. Elston Ave. • Chicago, Illinois 60630
Phone: (312) 792-2700 • TWX: 910-221-5199

DW "Multi-Switch"® Switch Specifications

U.S. Pat. No. 3,517,140 Canadian Pat. No. 882,307

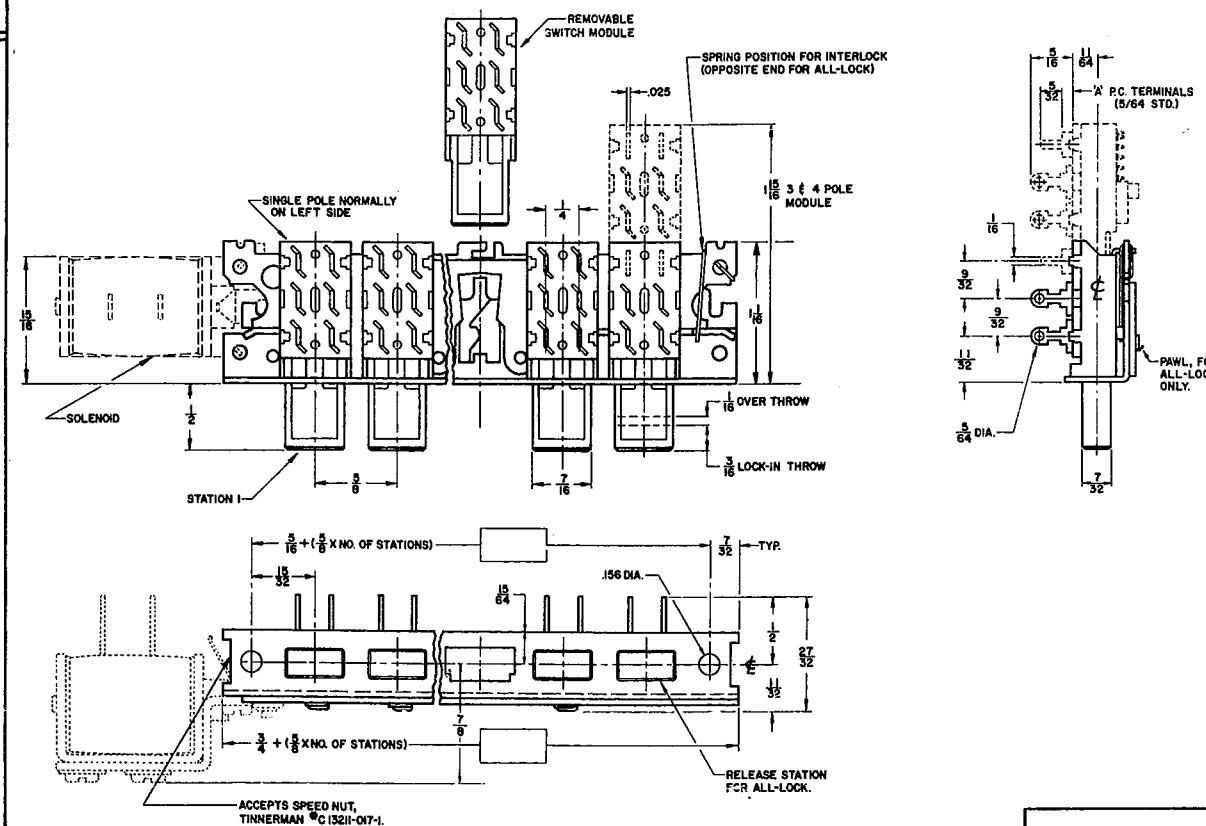
SERIES
65000

THIS PRINT DESCRIBES A DESIGN CONSIDERED PROPRIETARY IN NATURE, DEVELOPED AND MANUFACTURED BY SWITCHCRAFT, INC., AND IS RELEASED ON A CONFIDENTIAL BASIS FOR IDENTIFICATION PURPOSES ONLY.
WE RESERVE THE RIGHT TO CHANGE THE SPECIFICATIONS AND/OR PART NUMBERS CONTAINED HEREIN WHEN CIRCUMSTANCES MAKE IT NECESSARY.

CIRCUITS																		
PUSHBUTTON COLOR																		
HOT STAMPING (Indicate Orientation)																		
FOR SWITCHCRAFT USE ONLY	REAR SECTION																	
	FRONT SECTION																	
STATION NO.	1	2	3	4	5	6	7	8	9	10	11	12	13	14	15	16	17	18

FOR COMPLETE DATA, REFER TO SWITCHCRAFT DW "MULTI-SWITCH"® SWITCH CATALOG

- NO. OF STATIONS:** (Including Release Sta.)
- SWITCH MOUNTING POSITION:**
Horizontal ☐ Vertical ☐
- MECHANICAL FUNCTION:**
Interlock (to 12 Sta.) ☐
Non-Lock ☐
All-Lock (to 12 Sta.) ☐
Push-Lock/Push-Release ☐
Push-Lock/Push-Release (With common release) (to 12 Sta.) ☐
Special (Specify in "NOTE" Section) ☐
- LOCK-OUT FUNCTION:**
With ☐ Without ☐
- SPECIAL FEATURES:**
SOLENOID RELEASE—115 VAC, 60 Hz (Std) ☐
Other AC Source (Specify)
DC Source (Specify)
GANGED ASSEMBLIES—No. of Rows
No. of Stations, each Row
Twin Row (2 Rows Only, Back-to-Back, Row Centers, 3/4" (Std) ☐
Multiple Row (2 or More), Row Centers, 1 3/8" (Std) ☐
Row Centers, Special, to 3" (Specify)
Banking Only (No Interaction Between Rows) ☐
Banking and Coupling (Interaction Between Rows) ☐
DW ESCUTCHEON MODULES—DW-100 ☐ DW-200 ☐
Red ☐, Black ☐, White ☐, Other (Specify)
- PUSHBUTTON COLOR:**
Red ☐, Black (Std) ☐, White ☐, Other (Specify)
- CIRCUIT FORMS:** (Specify Above)
- CONTACT & TERMINAL PLATING:** Silver (Std) ☐
Other ☐ (Specify)
- TERMINALS:** Solder Type (Std) ☐
PC Type (Specify "A" Dim. from Catalog) ☐



"NOTES" FOR GANGED ASSEMBLY, SPECIAL SWITCH, OR OTHER SPECIAL REQUIREMENTS, INDICATE PANEL ARRANGEMENT, ENVELOPE SIZE, LEGEND HEIGHT, ETC., BELOW.

GENERAL SPECIFICATIONS

FRAME, LATCH BAR, HOUSING: Steel, Iridescent, Iridite over cad. plate (MIL-P-416A).
PUSHBUTTON ACTUATOR: POLYAMIDE THERMOPLASTIC (MIL-M-20693).
INSULATION: PHENOLIC (MIL-P-3115B).
CONTACTS: BRASS, SILVER PLATED (STD).
SWITCH MODULE RATING: 3 AMP. AC, .5 AMP DC; 125V.

NOTE: RETURN THIS TRANSPARENCY OR 3 COPIES WITH INQUIRY OR ORDER.

CUSTOMER		ENG.	DATE	ISSUE NO.
CUST. NO.		SWITCH-CRAFT PART NO.	SAMPLE NO. XM-25S-	
REF. NO.				

Mouser Electronics

Authorized Distributor

Click to View Pricing, Inventory, Delivery & Lifecycle Information:

[Switchcraft:](#)

[65121K206X](#) [65021K206X](#)