

- NOTES:
1. ALL PARTS TO BE BULK PACKED
  2. CONTACTS SUPPLIED UNASSEMBLED
  3. SEE DRAWING HPMISTD FOR HOLE PATTERN
  4. ALL DIMENSIONS ARE REFERENCE EXCEPT THOSE WITH A TOLERANCE



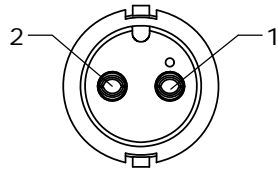
ASS'Y P/N	COUPLING RING COLOR
6380-XSG-3XXCC1	WHITE
6380-XSG-3XXCC2	RED
6380-XSG-3XXCC3	BLUE
6380-XSG-3XXCC4	LIGHT GREY
6380-XSG-3XXCC5	YELLOW
6380-XSG-3XXCC6	MAROON
6380-XSG-3XXCC7	GREEN

KIT P/N	GROMMET SIZE
6380-XSG-3DC	DAISY CHAIN
6380-XSG-311	CABLE O.D. .09-.14 [2.3-3.5mm]
6380-XSG-315	CABLE O.D. .15-.17 [3.8-4.3mm]
6380-XSG-318	CABLE O.D. .18-.20 [4.6-5.1mm]
6380-XSG-321	CABLE O.D. .21-.23 [5.3-5.8mm]

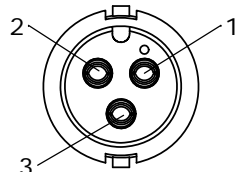
KIT P/N	NO. OF CONTACTS
6380-2SG-3XX	2 #16
6380-3SG-3XX	3 #16
6380-4SG-3XX	4 #16
6380-5SG-3XX	5 #16
6380-XSG-3XX	

GROMMET SIZE FOR SINGLE GROMMET OR "DC" FOR DAISY CHAIN

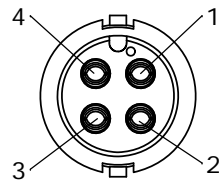
NO. OF CONTACTS



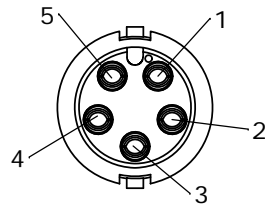
**FACE VIEW**  
6380-2SG-3XX



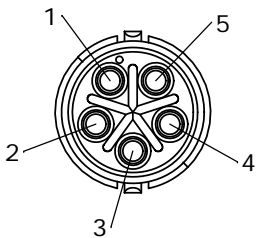
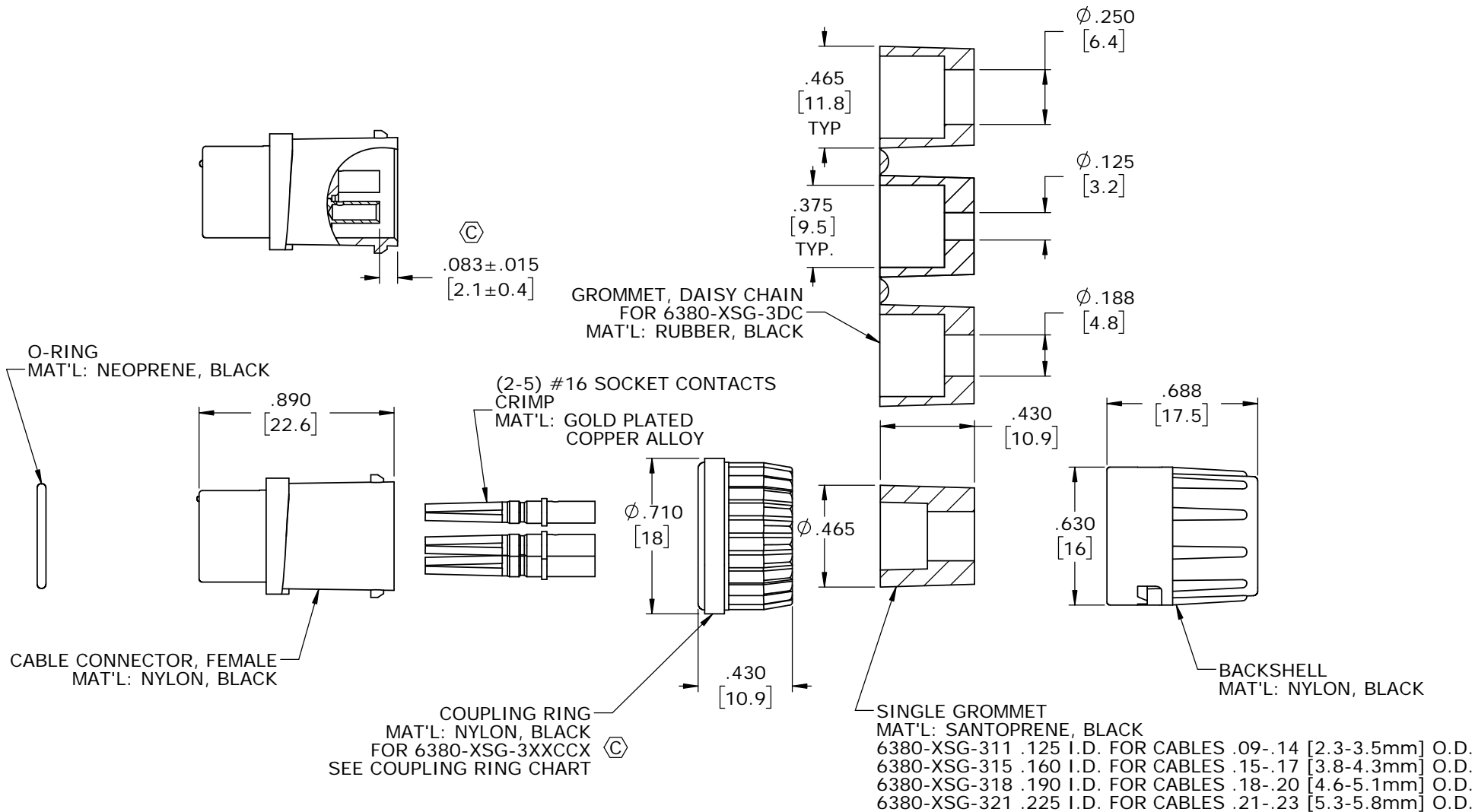
**FACE VIEW**  
6380-3SG-3XX



**FACE VIEW**  
6380-4SG-3XX



**FACE VIEW**  
6380-5SG-3XX




**WIRE VIEW**  
6380-5SG-3XX SHOWN

CUSTOMER APPROVAL

THIS DOCUMENT CONTAINS CONFIDENTIAL INFORMATION PROPRIETARY TO CONXALL CORPORATION. ANY REPRODUCTION, DISCLOSURE, OR USE OF THIS DOCUMENT /INFORMATION IS EXPRESSLY PROHIBITED UNLESS AUTHORIZED IN WRITING BY CONXALL CORPORATION.

APPROVED BY: \_\_\_\_\_  
DATE: \_\_\_\_\_

**RoHS COMPLIANT**

C	MA	04-17-20	ADDED COUPLING RING CHART AND CONTACT HEIGHT. DRAWING P/N WAS 6380-XSG-3XX PER DOR 20-E149SL-10	
B	BZ	11-04-09	CORRECTED DIMENSION, 10.9mm WAS 103.9mm PER ECR 7309	
A	BZ	09-29-09	DRAWING CREATED PER DOR 09-E149SL	
REV.	INIT.	DATE	DESCRIPTION	
	BZ	08-28-09	ORIG. DRAWN BY: BZ	 601 E. WILDWOOD VILLA PARK, IL 60181
			CHECKED BY:	
ALL INFORMATION ILLUSTRATED IS THE PROPERTY OF "CONXALL CORPORATION". UNAUTHORIZED DUPLICATION OR DISTRIBUTION OF THIS DOCUMENT IS PROHIBITED.			APPROVED BY:	TITLE: CABLE CONNECTOR KIT 2-5 #16 SOCKET CONTACTS MINI-CON-X STANDARD PRODUCT
ALL UNITS ARE IN FEET, INCHES, FRACTION OF INCHES AND DECIMALS.			SCALE: NTS	
			SIZE: B	CUSTOMER: 6380-XSG-3XX(CCX)
			SHEET: 1 OF 1	
			FILE: 6380-XSG-3XX(CCX)	PART NUMBER: 6380-XSG-3XX(CCX)
			DIRECTORY: SLW	REV C

DIMENSIONS IS BRACKETS [ ] ARE METRIC

# Mouser Electronics

Authorized Distributor

Click to View Pricing, Inventory, Delivery & Lifecycle Information:

[Switchcraft:](#)

[6380-4SG-3DC](#)