

## NOTES:

1. FINISHED PRODUCT TO BE PACKAGED 100 PIECES PER PARTITIONED BOX.
2. CONNECTOR ASSEMBLY SEALED WITH EPOXY AT PC TAIL END.

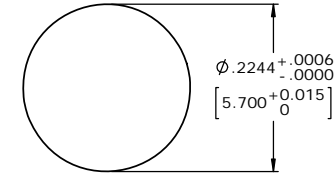
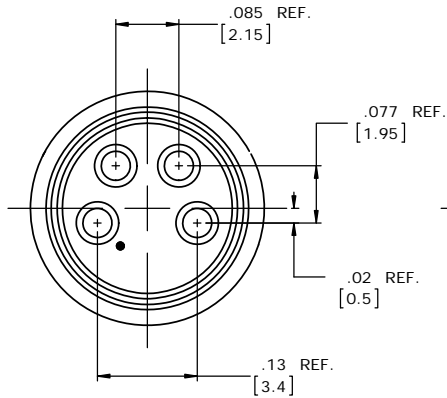
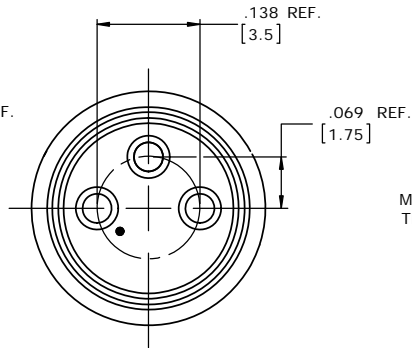
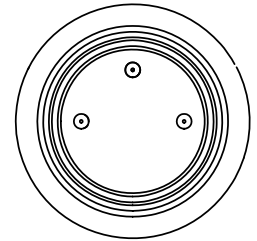
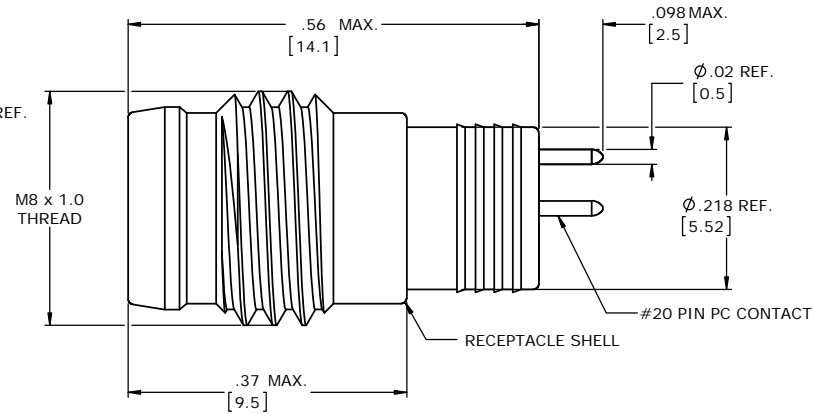
## CUSTOMER APPROVAL

THIS DOCUMENT CONTAINS CONFIDENTIAL INFORMATION PROPRIETARY TO CONXALL CORPORATION. ANY REPRODUCTION, DISCLOSURE, OR USE OF THIS DOCUMENT /INFORMATION IS EXPRESSLY PROHIBITED UNLESS AUTHORIZED IN WRITING BY CONXALL CORPORATION.

APPROVED BY: \_\_\_\_\_

DATE: \_\_\_\_\_

CXA PART NO.	NO. OF POS.
613PCBM	3
614PCBM	4

**PANEL CUT-OUT****MATING FACE**  
4 POSITIONS**MATING FACE**  
3 POSITIONS**P.C. TAIL END****PROPRIETARY**

THIS DOCUMENT CONTAINS CONFIDENTIAL INFORMATION PROPRIETARY TO CONXALL CORPORATION. ANY REPRODUCTION, DISCLOSURE, OR USE OF THIS DOCUMENT /INFORMATION IS EXPRESSLY PROHIBITED UNLESS AUTHORIZED IN WRITING BY CONXALL CORPORATION.

DIMENSIONS INCHES [MM]

**RoHS COMPLIANT**

B	AB	08-09-16	UPDATED MANUFACTURING NOTES PER ECR 9070.
A	AB	03-16-16	DRAWING CREATED PER RTM & DOR 10-2500JS-2
REV.	INIT.	DATE	DESCRIPTION
ORIG. DRAWN BY: DATE:		CLT	07-01-12
CHECKED BY:			
APPROVED BY:			
SCALE		SIZE	SHEET
NTS		B	1 OF 1
FILE		DIRECTORY:	PART
SAME AS P/N		SLW	NUMBER: 61XPCBM FAM
			REV B

**conxall**  
601 E. WILDWOOD VILLA PARK, IL 60181

TITLE: MALE RECEPTACLE, M8 THREAD  
STYLE BM (LONG)

CUSTOMER: STANDARD PRODUCT

# Mouser Electronics

Authorized Distributor

Click to View Pricing, Inventory, Delivery & Lifecycle Information:

[Switchcraft:](#)

[613PCBM](#)