

NOTES:

1. FINISHED PRODUCT TO BE PACKAGED 100 PIECES PER PARTITIONED BOX.
2. CONNECTOR ASSEMBLY SEALED WITH EPOXY AT PC TAIL END.

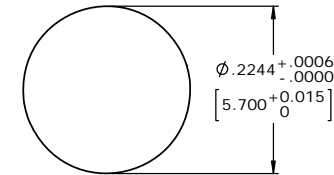
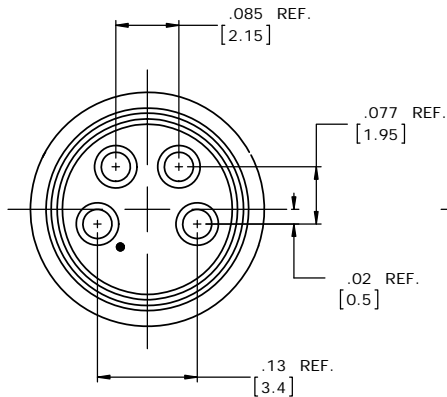
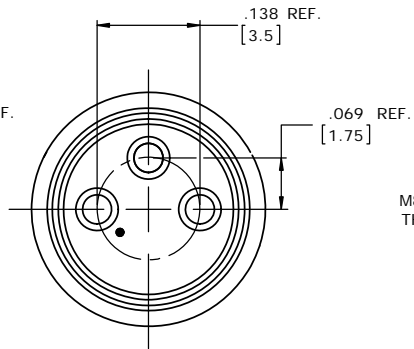
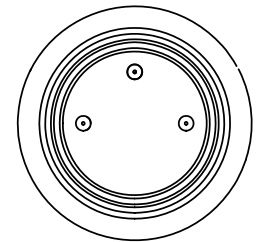
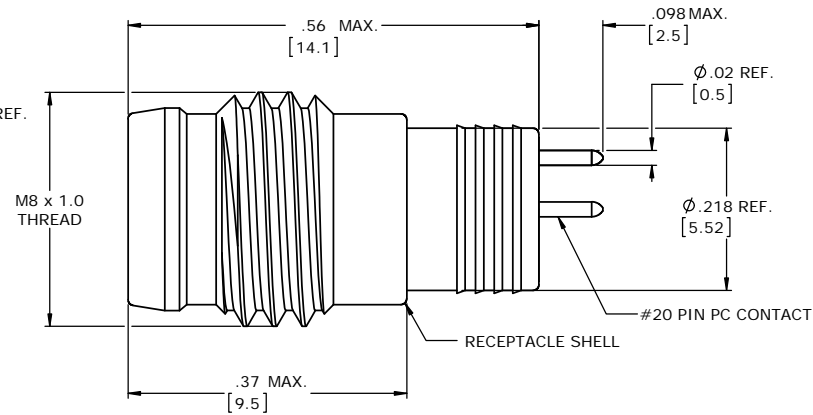
CUSTOMER APPROVAL

THIS DOCUMENT CONTAINS CONFIDENTIAL INFORMATION PROPRIETARY TO CONXALL CORPORATION. ANY REPRODUCTION, DISCLOSURE, OR USE OF THIS DOCUMENT /INFORMATION IS EXPRESSLY PROHIBITED UNLESS AUTHORIZED IN WRITING BY CONXALL CORPORATION.

APPROVED BY: _____

DATE: _____

CXA PART NO.	NO. OF POS.
613PCBM	3
614PCBM	4

**PANEL CUT-OUT****MATING FACE**
4 POSITIONS**MATING FACE**
3 POSITIONS**P.C. TAIL END****PROPRIETARY**

THIS DOCUMENT CONTAINS CONFIDENTIAL INFORMATION PROPRIETARY TO CONXALL CORPORATION. ANY REPRODUCTION, DISCLOSURE, OR USE OF THIS DOCUMENT /INFORMATION IS EXPRESSLY PROHIBITED UNLESS AUTHORIZED IN WRITING BY CONXALL CORPORATION.

DIMENSIONS INCHES [MM]

RoHS COMPLIANT

B	AB	08-09-16	UPDATED MANUFACTURING NOTES PER ECR 9070.
A	AB	03-16-16	DRAWING CREATED PER RTM & DOR 10-2500JS-2
REV.	INIT.	DATE	DESCRIPTION
ORIG. DRAWN BY: DATE: 07-01-12			
CHECKED BY:			
APPROVED BY:			
SCALE: NTS B 1 OF 1			
FILE: SAME AS P/N			
DIRECTORY: SLW			
PART NUMBER: 61XPCBM FAM			
REV B			

conxall
601 E. WILDWOOD VILLA PARK, IL 60181TITLE: MALE RECEPTACLE, M8 THREAD
STYLE BM (LONG)

CUSTOMER: STANDARD PRODUCT

Mouser Electronics

Authorized Distributor

Click to View Pricing, Inventory, Delivery & Lifecycle Information:

Switchcraft:

614PCBM 613PCBM