

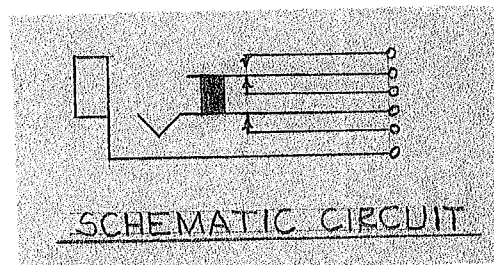
#### NOTES:

##### 1. MATERIALS:

FRAME - STEEL, NICKEL PLATED  
 BUSHING - BRASS, NICKEL PLATED  
 SPRINGS - SPRING TEMPERED, NICKEL SILVER  
 TERMINALS - LEAD FREE TIN DIPPED  
 CONTACTS - FINE SILVER  
 SPACERS AND LIFTER - PHENOLIC  
 GROUND TERMINAL - STEEL, TIN PLATED  
 TUBING - THERMOPLASTIC  
 TWIN NUT - STEEL, NICKEL PLATED  
 SCREWS - STEEL NICKEL PLATED  
 HARDWARE:  
 WASHER - STEEL, NICKEL PLATED  
 HEX NUT - BRASS, NICKEL PLATED

2. HARDWARE SHIPPED UNASSEMBLED.

3. THIS PRODUCT IS RoHS COMPLIANT.



**CUSTOMER DRAWING**

THIS DRAWING DESCRIBES A DESIGN CONSIDERED PROPRIETARY IN NATURE, DEVELOPED AND MANUFACTURED BY SWITCHCRAFT INC. AND IS RELEASED ON A CONFIDENTIAL BASIS FOR IDENTIFICATION PURPOSES ONLY.

						THIS DRAWING DESCRIBES A DESIGN CONSIDERED PROPRIETARY IN NATURE, DEVELOPED AND MANUFACTURED BY SWITCHCRAFT INC. AND IS RELEASED ON A CONFIDENTIAL BASIS FOR IDENTIFICATION PURPOSES ONLY.												
						UNLESS OTHERWISE SPECIFIED	SIZE		WIDTH		MULT		LBS/M		TEMPER			
						1. ALL DIMENSIONS IN INCHES [mm]  - TWO PLACE DECIMALS    ±0.02    [0.5]  - THREE PLACE DECIMALS    ±0.005    [0.13]	FINISH					MATERIAL						
					SPEC No.					SPEC No.								
					FIRST USED ON				SCALE 1:1		Switchcraft®							
					DATE DRAWN 10/13/22		BY TJK	CHKD TJK 10/13/22	APVD TJK 10/13/22									
A	26220	02-05-07	PC	TJK		NAME					PHONE JACK SHORT FRAME, RoHS					PART No.  55X		REV  A
REV	ECO NUMBER	DATE	BY	APVD		DO NOT SCALE DRAWING												
REVISIONS																		

SolidWorks CAD File



# Mouser Electronics

Authorized Distributor

Click to View Pricing, Inventory, Delivery & Lifecycle Information:

[Switchcraft:](#)

[55X](#)