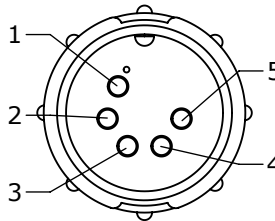
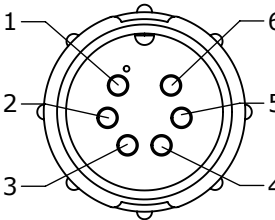


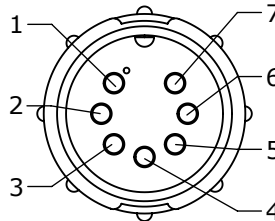
FACE VIEW
ASSY: 5280-4PG-3XX



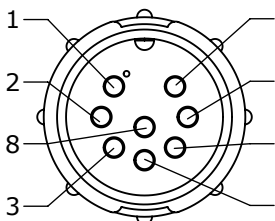
FACE VIEW
ASSY: 5280-5PG-3XX



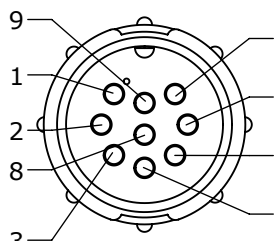
FACE VIEW
ASSY: 5280-6PG-3XX



FACE VIEW
ASSY: 5280-7PG-3XX

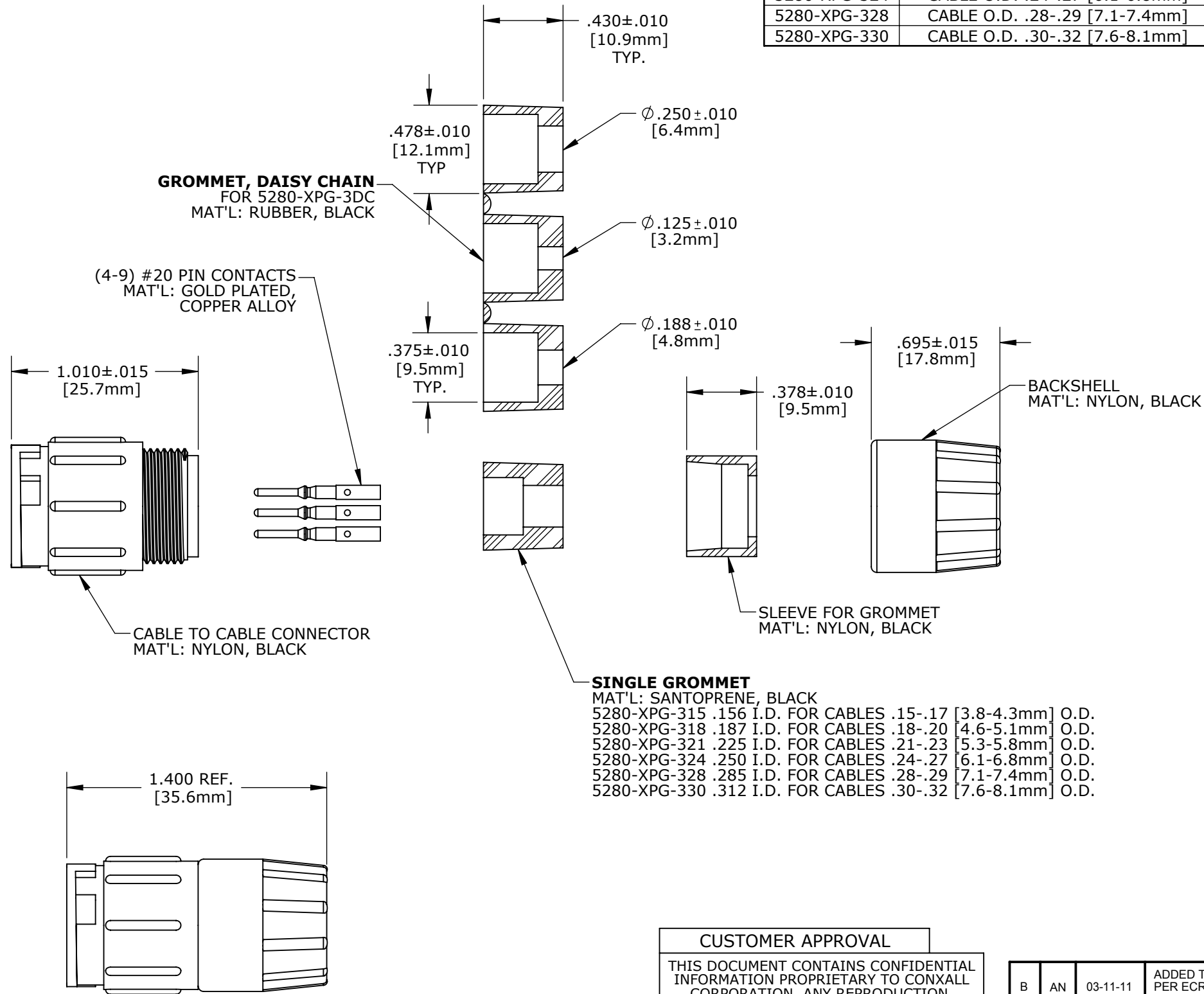


FACE VIEW
ASSY: 5280-8PG-3XX



FACE VIEW
ASSY: 5280-9PG-3XX

- NOTES:
1. ALL PARTS TO BE BULK PACKED.
2. ALL DIMENSIONS ARE REFERENCE ONLY.



SHOWN ASSEMBLED KIT
FOR CUSTOMER REFERENCE ONLY



DIMENSIONS IS BRACKETS [] ARE METRIC

KIT P/N	GROMMET SIZE
5280-XPG-3DC	DAISY CHAIN
5280-XPG-315	CABLE O.D. .15-.17 [3.8-4.3mm]
5280-XPG-318	CABLE O.D. .18-.20 [4.6-5.1mm]
5280-XPG-321	CABLE O.D. .21-.23 [5.3-5.8mm]
5280-XPG-324	CABLE O.D. .24-.27 [6.1-6.8mm]
5280-XPG-328	CABLE O.D. .28-.29 [7.1-7.4mm]
5280-XPG-330	CABLE O.D. .30-.32 [7.6-8.1mm]

KIT P/N	NO. OF CONTACTS
5280-4PG-3XX	4 #20
5280-5PG-3XX	5 #20
5280-6PG-3XX	6 #20
5280-7PG-3XX	7 #20
5280-8PG-3XX	8 #20
5280-9PG-3XX	9 #20
5280-XPG-3XX	

GROMMET SIZE
FOR SINGLE
GROMMET OR
"DC" FOR
DAISY CHAIN

NO. OF CONTACTS

CUSTOMER APPROVAL

THIS DOCUMENT CONTAINS CONFIDENTIAL
INFORMATION PROPRIETARY TO CONXALL
CORPORATION. ANY REPRODUCTION,
DISCLOSURE, OR USE OF THIS
DOCUMENT /INFORMATION IS EXPRESSLY
PROHIBITED UNLESS AUTHORIZED IN
WRITING BY CONXALL CORPORATION.

APPROVED BY: _____

DATE: _____

RoHS COMPLIANT

B	AN	03-11-11	ADDED TOLERANCES AND MATERIALS. ADDED ASSEMBLED VIEW. PER ECR 7783	
A	BZ	08-20-09	DRAWING CREATED PER DOR 09-E149SL	
REV.	INIT.	DATE	DESCRIPTION	
BZ		08-20-09	ORIG. DRAWN BY: DATE: 08-20-09	
ALL INFORMATION ILLUSTRATED IS THE PROPERTY OF "CONXALL CORPORATION." UNAUTHORIZED DUPLICATION OR DISTRIBUTION OF THIS DOCUMENT IS PROHIBITED.			CHECKED BY:	
ALL UNITS ARE IN FEET. INCHES, FRACTION OF INCHES AND DECIMALS.			APPROVED BY:	
= CRITICAL CHARACTERISTIC FLAG PER SPEC. XXXX			SCALE NTS	SIZE B
			SHEET 1 OF 1	
			FILE: 5280-XPG-3XX	DIRECTORY: SLW
			TITLE: CABLE TO CABLE CONNECTOR KIT 4-9 #20 PIN CONTACTS MULTI-CON-X STANDARD PRODUCT	
			CUSTOMER: STANDARD PRODUCT	
			PART NUMBER: 5280-XPG-3XX	
			REV B	

Mouser Electronics

Authorized Distributor

Click to View Pricing, Inventory, Delivery & Lifecycle Information:

Switchcraft:

[5280-4PG-318](#) [5280-4PG-3XX](#) [5280-5PG-3XX](#) [5280-6PG-3XX](#) [5280-7PG-3XX](#) [5280-8PG-3XX](#) [5280-9PG-3XX](#)