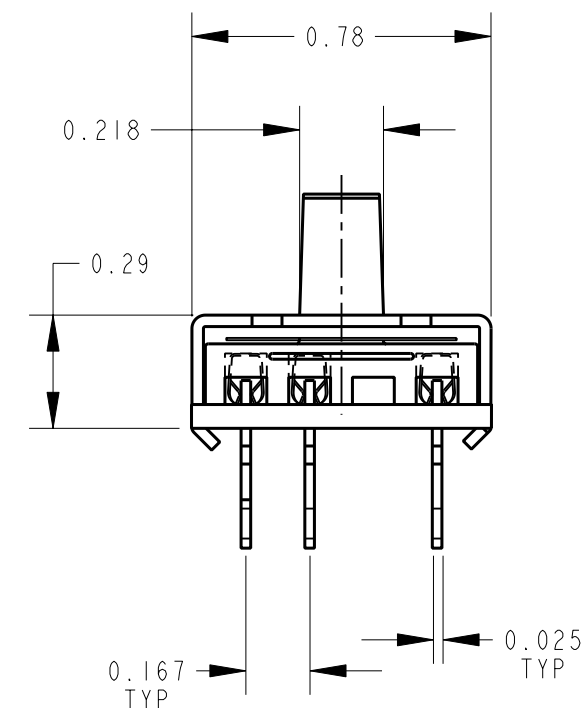
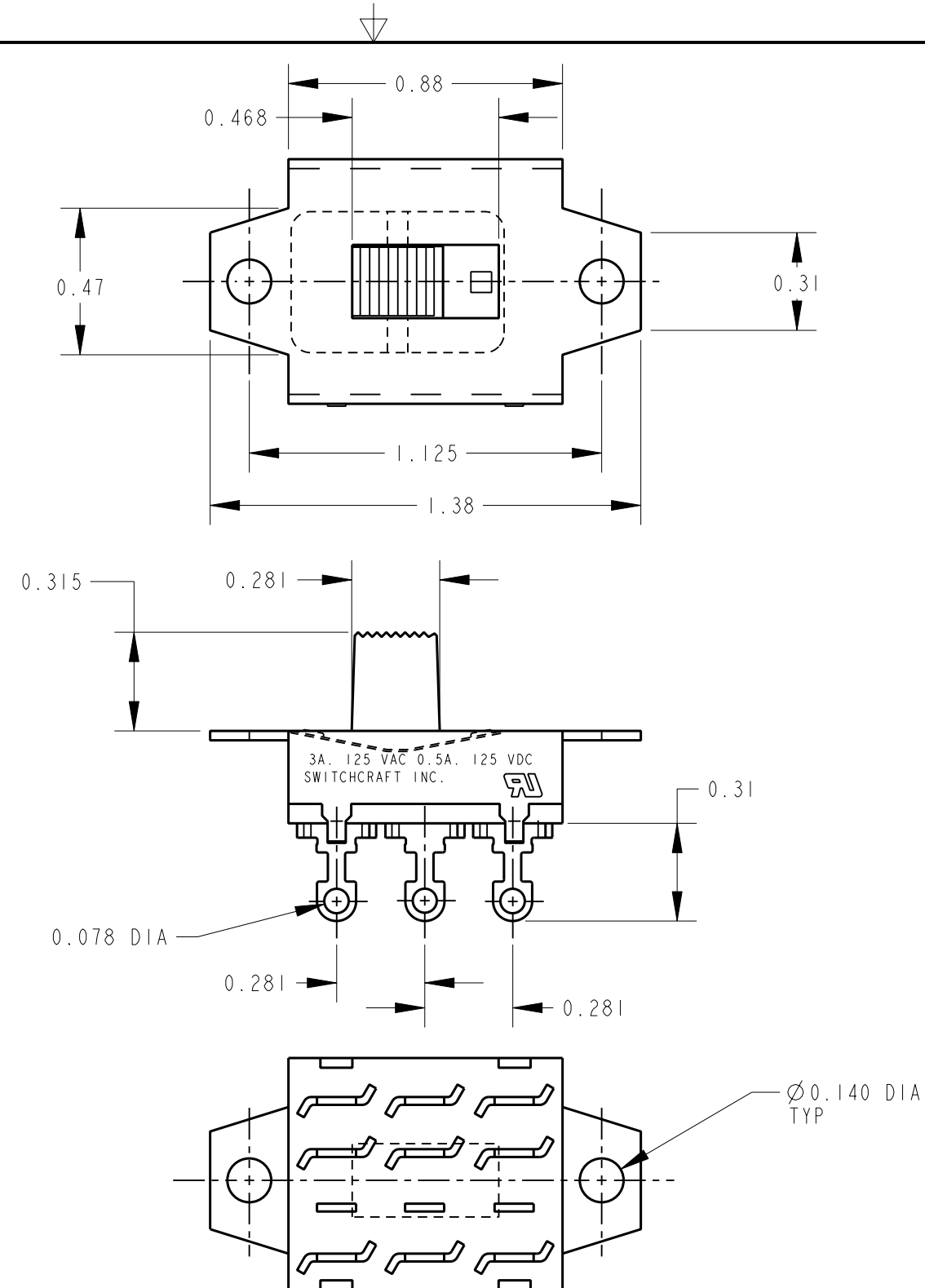


SCHEMATIC

3 POLE DOUBLE THROW



NOTE:

1. ALL DIMENSIONS ARE FOR REFERENCE UNLESS OTHERWISE SPECIFIED.
2. MATERIALS:  
HOUSING - STEEL, ZINC PLATED  
DETENT SHIM - NICKEL SILVER  
KNOB - THERMOPLASTIC, BLACK  
TERMINALS - BRASS, SILVER PLATED  
TERMINAL BOARD - PHENOLIC
3. THIS PRODUCT IS RoHS COMPLIANT.

CUSTOMER DRAWING

					<div>★ STAR SYMBOL DENOTES CRITICAL DIMENSION</div>	THIS DRAWING DESCRIBES A DESIGN CONSIDERED PROPRIETARY IN NATURE, DEVELOPED AND MANUFACTURED BY SWITCHCRAFT INC. AND IS RELEASED ON A CONFIDENTIAL BASIS FOR IDENTIFICATION PURPOSES ONLY.									
					UNLESS OTHERWISE SPECIFIED	SIZE	WIDTH		MULT		LBS/M		TEMPER		
					1. ALL DIMENSIONS IN INCHES -TWO PLACE DECIMALS ±0.01 -THREE PLACE DECIMALS ±0.005 -ANGLES ±1° -ALL DIA. CONCENTRIC WITHIN 0.005 T.I.R.	FINISH SPEC No.				MATERIAL SPEC No.					
					2. FEATURES ON THE SAME CENTERLINE MUST BE ALIGNED WITHIN ±0.002	FIRST USED ON			SCALE 1 = 0.5		<div>Switchcraft®</div>				
					3. REMOVE ALL BURRS	DATE DRAWN	BY	CHKD	APVD						
A	26044	6-24-06	JEB	TJK		22-Aug-08	JEB	JEB 08-22-08	TJK 08-24-08						
REV	ECO NUMBER	DATE	BY	APVD		NAME				PART No.		REV			
REVISIONS					DO NOT SCALE DRAWING	3 P.D.T. SLIDE SWITCH, RoHS				50209LX		A			

# Mouser Electronics

Authorized Distributor

Click to View Pricing, Inventory, Delivery & Lifecycle Information:

Switchcraft:

50209LX