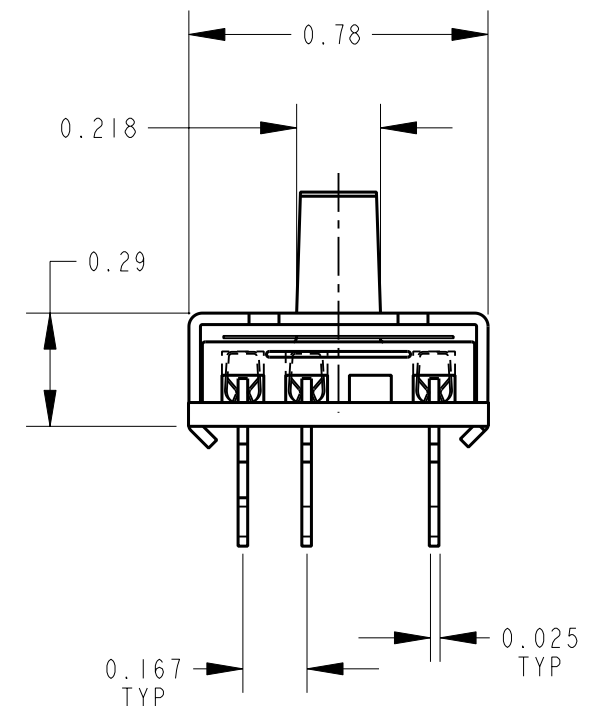
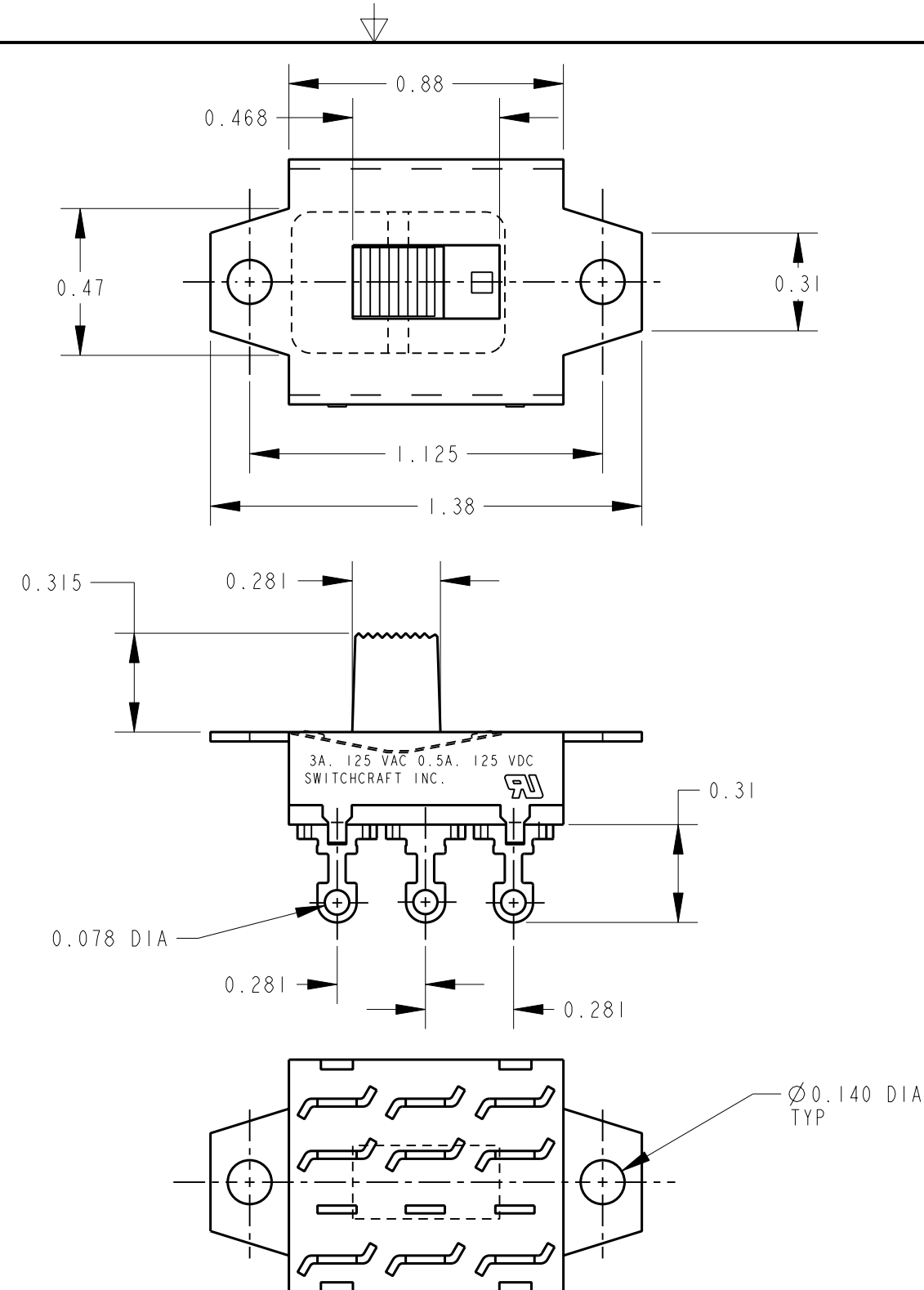


SCHEMATIC  
3 POLE DOUBLE THROW



NOTE:

1. ALL DIMENSIONS ARE FOR REFERENCE UNLESS OTHERWISE SPECIFIED.
2. MATERIALS:  
HOUSING - STEEL, ZINC PLATED  
DETENT SHIM - NICKEL SILVER  
KNOB - THERMOPLASTIC, BLACK  
TERMINALS - BRASS, SILVER PLATED  
TERMINAL BOARD - PHENOLIC
3. THIS PRODUCT IS RoHS COMPLIANT.

CUSTOMER DRAWING

					★ STAR SYMBOL DENOTES CRITICAL DIMENSION					THIS DRAWING DESCRIBES A DESIGN CONSIDERED PROPRIETARY IN NATURE, DEVELOPED AND MANUFACTURED BY SWITCHCRAFT INC. AND IS RELEASED ON A CONFIDENTIAL BASIS FOR IDENTIFICATION PURPOSES ONLY.				
					UNLESS OTHERWISE SPECIFIED					SIZE	WIDTH	MULT	LBS/M	TEMPER
					1. ALL DIMENSIONS IN INCHES - TWO PLACE DECIMALS ±0.01 - THREE PLACE DECIMALS ±0.005 - ANGLES ±1° - ALL DIA. CONCENTRIC WITHIN 0.005 T.I.R.					FINISH SPEC No.		MATERIAL SPEC No.		
					2. FEATURES ON THE SAME CENTERLINE MUST BE ALIGNED WITHIN ±0.002					FIRST USED ON		SCALE 1 = 0.5		Switchcraft®
					3. REMOVE ALL BURRS					DATE DRAWN	BY	CHKD	APVD	
A	26044	6-24-06	JEB	TJK						22-Aug-08	JEB	JEB 08-22-08	TJK 08-24-08	SHEET 1 OF 1
REV	ECO NUMBER	DATE	BY	APVD						NAME			PART No.	REV
REVISIONS					DO NOT SCALE DRAWING					3 P.D.T. SLIDE SWITCH, RoHS			50209LX	A

# Mouser Electronics

Authorized Distributor

Click to View Pricing, Inventory, Delivery & Lifecycle Information:

[Switchcraft:](#)

[50209LX](#)