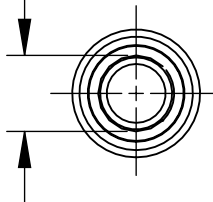


5/16-24 UNF-2B
TRUNCATED INTERNAL THREAD
0.301 MAJOR DIAMETER

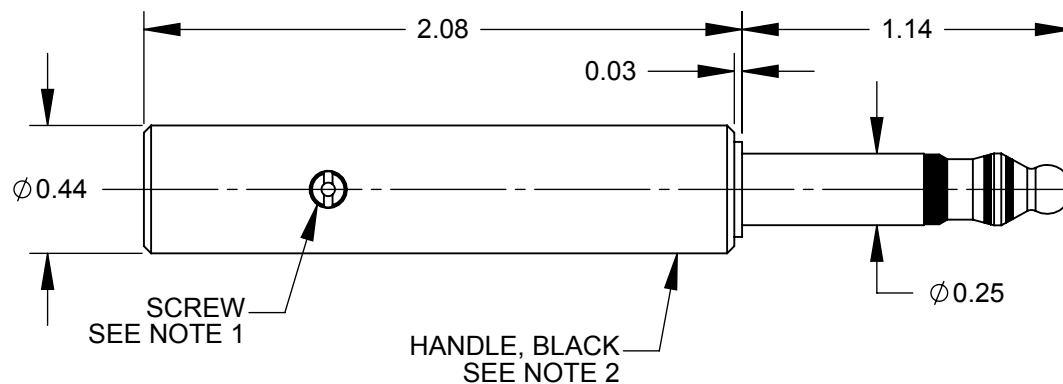
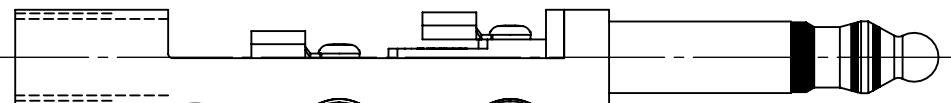
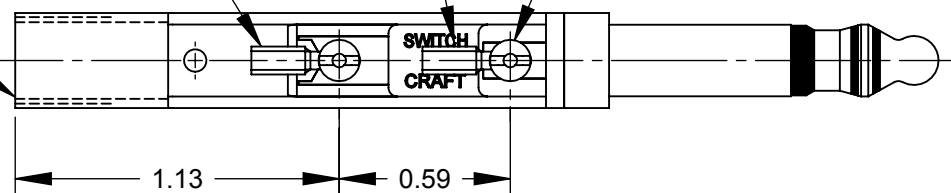
Ø 0.264
I.D. REF



RING TERMINAL
SEE NOTE 1

TIP TERMINAL
SEE NOTE 1

SCREWS (2)
SEE NOTE 1




SCREW
SEE NOTE 1

HANDLE, BLACK
SEE NOTE 2

NOTES:

1. TERMINALS AND SCREWS ARE SHIPPED UNASSEMBLED AS HARDWARE KIT K172.
2. HANDLE SHIPPED UNASSEMBLED.
3. MATERIALS:
TIP ROD, RING & SLEEVE - COPPER ALLOY
INSULATION - THERMOPLASTIC, BLACK
TERMINALS - COPPER ALLOY, TIN PLATED
SCREWS- COPPER ALLOY
HANDLE - THERMOPLASTIC, BLACK
4. THIS PRODUCT IS RoHS COMPLIANT.

CUSTOMER DRAWING

					THIS DRAWING DESCRIBES A DESIGN CONSIDERED PROPRIETARY IN NATURE, DEVELOPED AND MANUFACTURED BY SWITCHCRAFT INC. AND IS RELEASED ON A CONFIDENTIAL BASIS FOR IDENTIFICATION PURPOSES ONLY.				
					SIZE	WIDTH	MULT	LBS/M	TEMPER
					FINISH SPEC No.			MATERIAL SPEC No.	
					FIRST USED ON		SCALE 1.5:1		
					DATE DRAWN 8-1-13	BY TO	CHKD TO 8-1-13	APVD TJK 8-1-13	
					NAME LITTEL PLUG, RoHS				SHEET 1 OF 1
					PART No. 483X				REV A
UNLESS OTHERWISE SPECIFIED									
1. ALL DIMENSIONS IN INCHES									
- TWO PLACE DECIMALS ±0.02									
- THREE PLACE DECIMALS ±0.005									
A	27173	7-18-13	TO	TJK					
REV	ECO NUMBER	DATE	BY	APVD					
REVISIONS									
DO NOT SCALE DRAWING									

SolidWorks CAD File



Mouser Electronics

Authorized Distributor

Click to View Pricing, Inventory, Delivery & Lifecycle Information:

Switchcraft:

483 483X