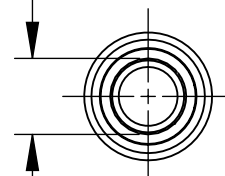


5/16-24 UNF-2B
TRUNCATED INTERNAL THREAD
0.301 MAJOR DIAMETER

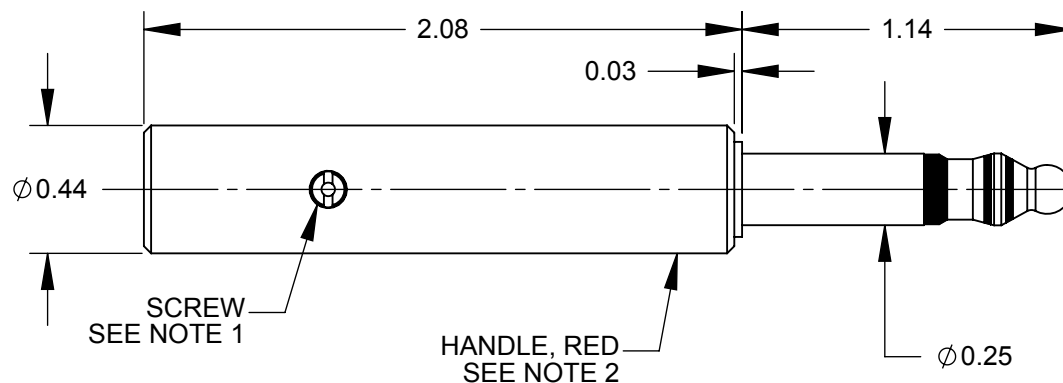
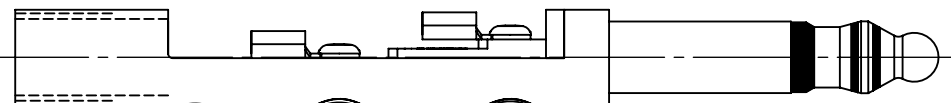
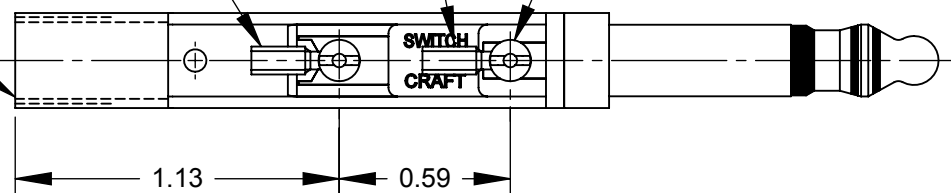
Ø 0.264
I.D. REF



RING TERMINAL
SEE NOTE 1

TIP TERMINAL
SEE NOTE 1

SCREWS (2)
SEE NOTE 1



NOTES:

1. TERMINALS AND SCREWS ARE SHIPPED UNASSEMBLED AS HARDWARE KIT K172.
2. HANDLE SHIPPED UNASSEMBLED.
3. MATERIALS:
TIP ROD, RING & SLEEVE - COPPER ALLOY
INSULATION - THERMOPLASTIC, BLACK
TERMINALS - COPPER ALLOY, TIN PLATED
SCREWS- COPPER ALLOY
HANDLE - THERMOPLASTIC, RED
4. THIS PRODUCT IS RoHS COMPLIANT.

CUSTOMER DRAWING

					<div>UNLESS OTHERWISE SPECIFIED</div> <div>1. ALL DIMENSIONS IN INCHES</div> <div>- TWO PLACE DECIMALS ±0.02</div> <div>- THREE PLACE DECIMALS ±0.005</div>	THIS DRAWING DESCRIBES A DESIGN CONSIDERED PROPRIETARY IN NATURE, DEVELOPED AND MANUFACTURED BY SWITCHCRAFT INC. AND IS RELEASED ON A CONFIDENTIAL BASIS FOR IDENTIFICATION PURPOSES ONLY.															
						SIZE	WIDTH		MULT		LBS/M		TEMPER								
						FINISH						MATERIAL									
						SPEC No.						SPEC No.									
						FIRST USED ON				SCALE		Switchcraft®									
										1.5:1											
						DATE DRAWN	BY	CHKD		APVD		SHEET 1 OF 1									
A	25653	6/14/07	RS	TJK	1/10/11	RS	RS		TJK												
							1/10/11		1/10/11												
REV	ECO NUMBER	DATE	BY	APVD	NAME						PART No.				REV						
REVISIONS					DO NOT SCALE DRAWING						LITTEL PLUG, RoHS						482X				A

DO NOT SCALE DRAWING

SolidWorks CAD File



Mouser Electronics

Authorized Distributor

Click to View Pricing, Inventory, Delivery & Lifecycle Information:

Switchcraft:

482 482X