

46202LRX

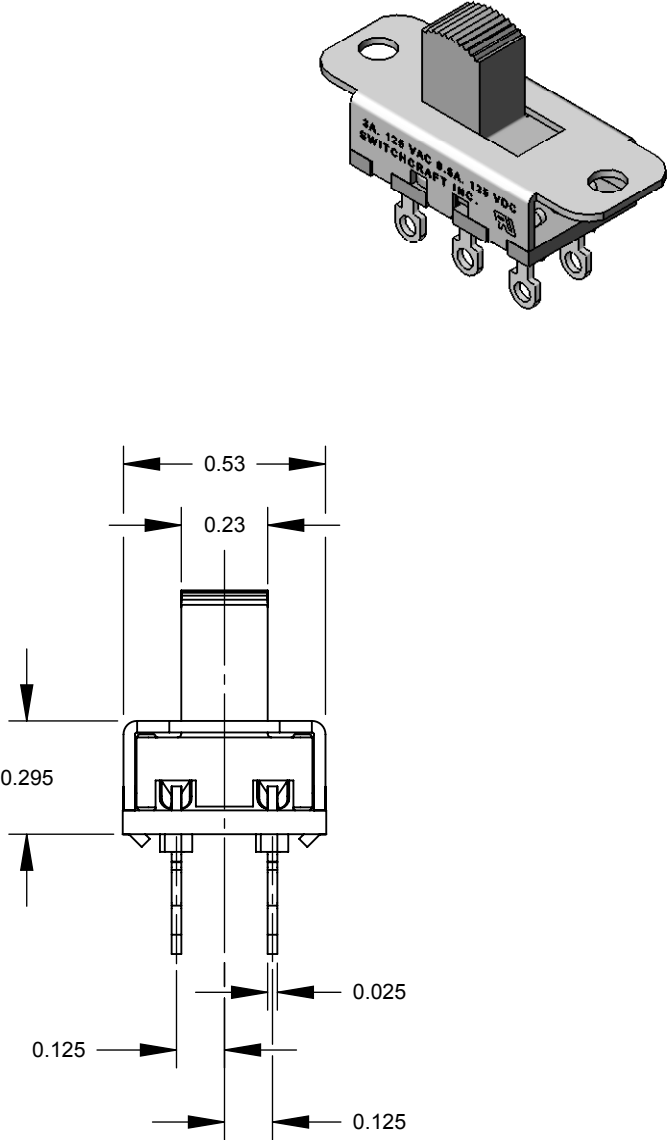
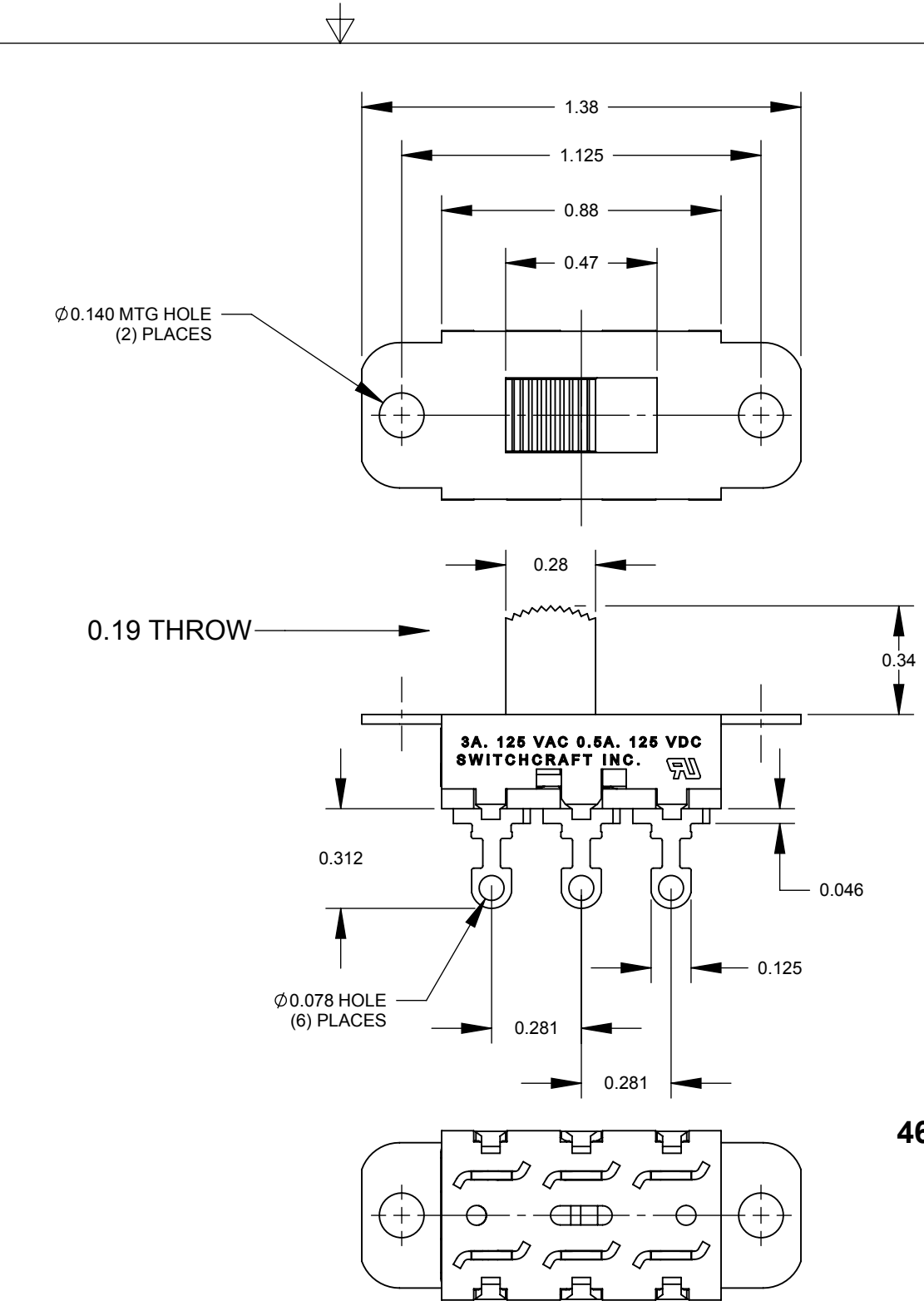
46203LRX

46203LSRX

46204LRX

46206LRX

46206LSRX



46206LRX SHOWN

CUSTOMER DRAWING

- NOTES:
- 1. ALL DIMENSIONS REFERENCE UNLESS OTHERWISE SPECIFIED.
 - 2. MATERIALS:
HOUSING - STEEL, ZINC PLATED
BUTTON - THERMOPLASTIC, BLACK
TERMINALS & CONTACT SLIDER - BRASS, SILVER PLATED
TERMINAL BOARD - PHENOLIC
 - 3. SWITCH RATING:
3 AMP, 125 V.A.C., 0.5 AMP, 125 V.D.C.
 - 4. THIS PRODUCT IS RoHS COMPLIANT.

					<div>UNLESS OTHERWISE SPECIFIED</div> <div>1. ALL DIMENSIONS IN INCHES</div> <div>- TWO PLACE DECIMALS ±0.02</div> <div>- THREE PLACE DECIMALS ±0.005</div>	THIS DRAWING DESCRIBES A DESIGN CONSIDERED PROPRIETARY IN NATURE, DEVELOPED AND MANUFACTURED BY SWITCHCRAFT INC. AND IS RELEASED ON A CONFIDENTIAL BASIS FOR IDENTIFICATION PURPOSES ONLY.							
						SIZE	WIDTH		MULT	LBS/M	TEMPER		
						FINISH				MATERIAL			
						SPEC No.				SPEC No.			
						FIRST USED ON			SCALE		Switchcraft®		
							2:1						
A	26008	8/5/06	RS	TJK		DATE DRAWN	BY	CHKD	APVD				
					2/19/09	RS	RS	TJK					
							2/19/09	2/19/09					
REV	ECO NUMBER	DATE	BY	APVD	NAME				PART No.		REV		
REVISIONS					DO NOT SCALE DRAWING		46200LR SERIES				46200LRX SERIES		A
							SLIDE SWITCH, RoHS						

Mouser Electronics

Authorized Distributor

Click to View Pricing, Inventory, Delivery & Lifecycle Information:

[Switchcraft:](#)

[46203LRX](#)