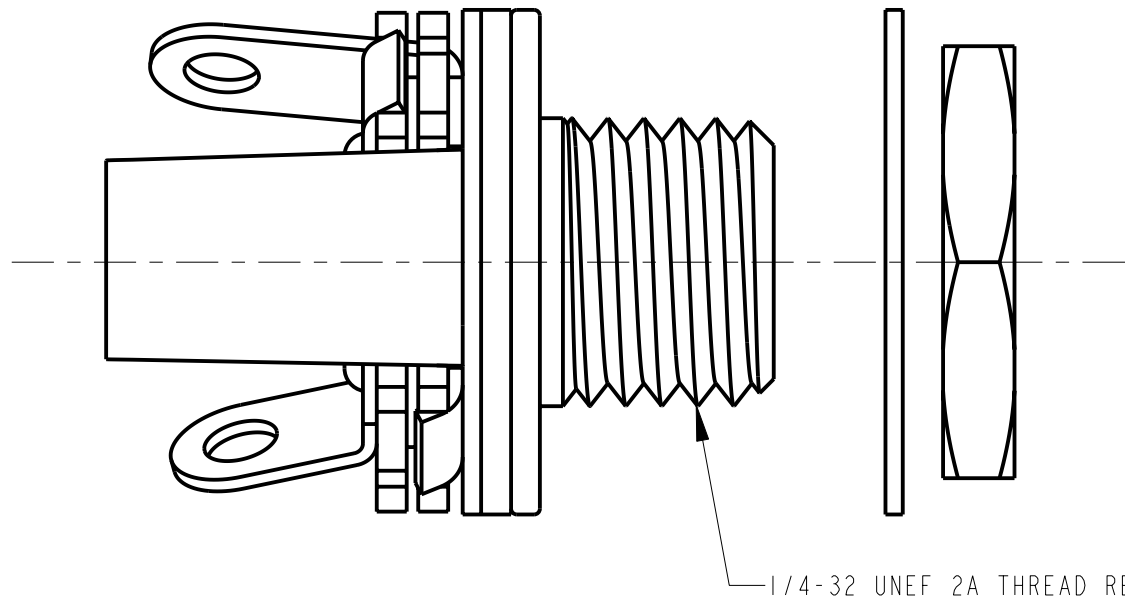
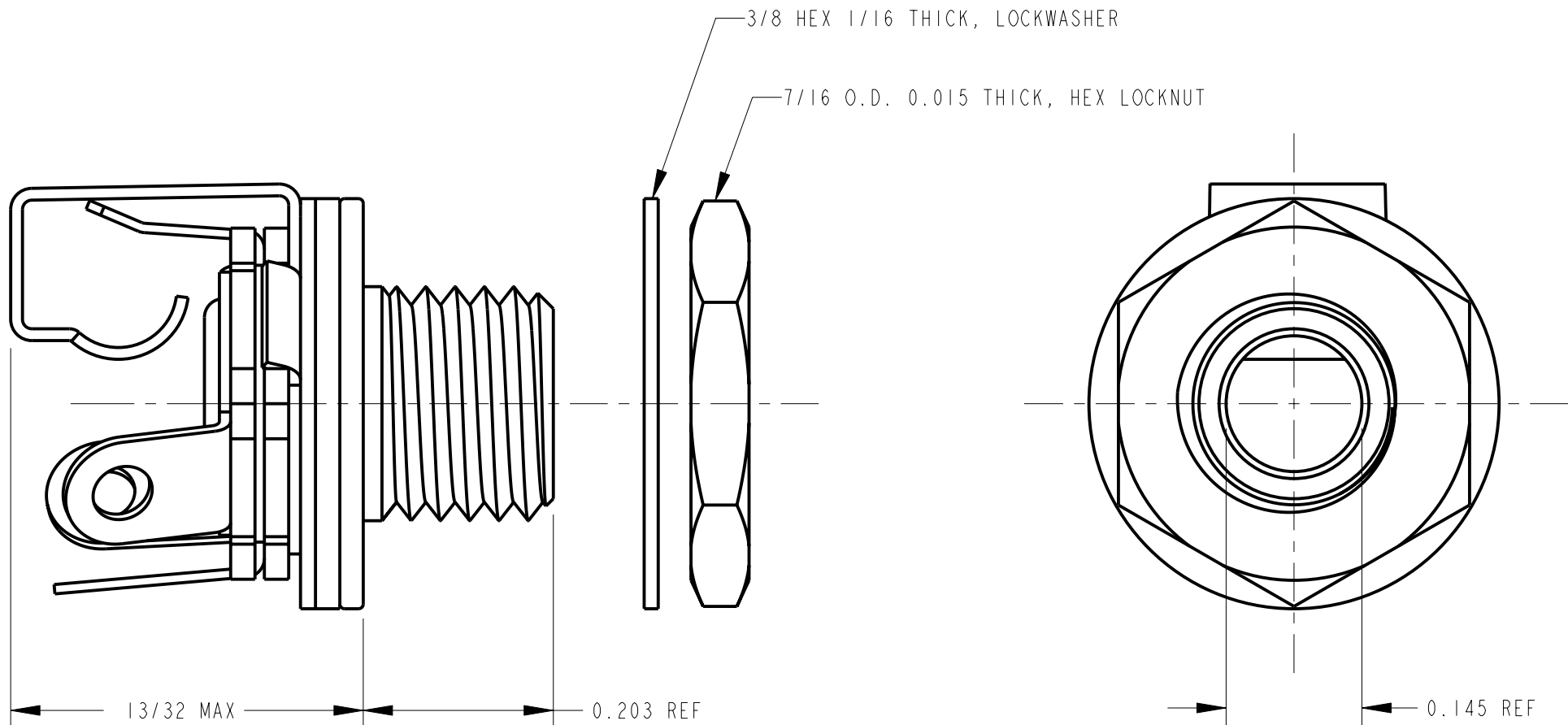
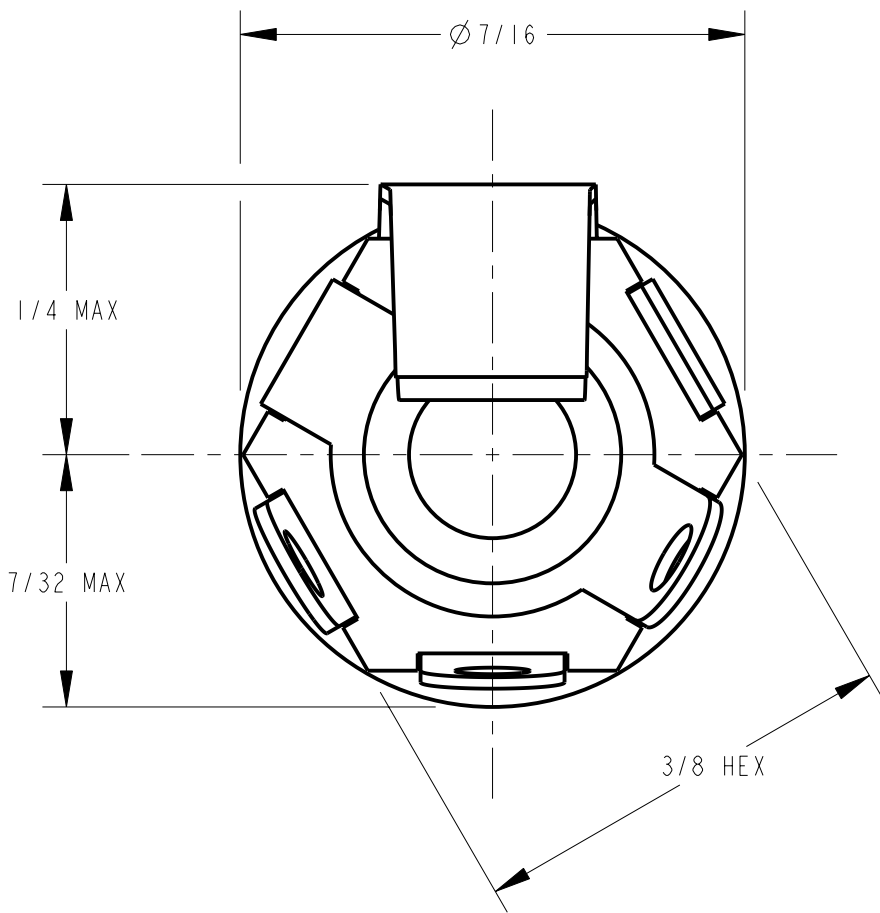


SCALE 4:1

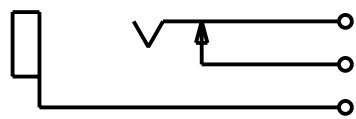


1/4-32 UNEF 2A THREAD REF



SPECIFICATIONS:

- BUSHING - BRASS, NICKEL PLATED
SPRING - NICKEL SILVER, SPRING TEMPERED
SPACERS - PAPER BASE BAKEUTE XXP
SLEEVE TERMINAL - BRASS, HOT TINNED
WASHER - STEEL, NICKEL PLATED
LOCKNUT - BRASS, NICKEL PLATED



SCHEMATIC CIRCUIT

						★ STAR SYMBOL DENOTES CRITICAL DIMENSION	THIS DRAWING DESCRIBES A DESIGN CONSIDERED PROPRIETARY IN NATURE, DEVELOPED AND MANUFACTURED BY SWITCHCRAFT INC. AND IS RELEASED ON A CONFIDENTIAL BASIS FOR IDENTIFICATION PURPOSES ONLY.				
						UNLESS OTHERWISE SPECIFIED	SIZE	WIDTH	MULT	LBS/M	TEMPER
						1. ALL DIMENSIONS IN INCHES - TWO PLACE DECIMALS ±0.01 - THREE PLACE DECIMALS ±0.005 - FRACTIONAL DIMENSIONS ±1/64 - ANGLES ±1° - ALL DIA. CONCENTRIC WITHIN 0.005 T.I.R.	FINISH			MATERIAL	
						2. FEATURES ON THE SAME CENTERLINE MUST BE ALIGNED WITHIN ±0.002	SPEC No.			SPEC No.	
						3. REMOVE ALL BURRS	FIRST USED ON		SCALE		Switchcraft®
						DO NOT SCALE DRAWING	DATE DRAWN	BY	CHKD	APVD	
E	REDRAWN BY REV.D ECO #20875	7-16-97	MM	JF			4-14-64	TRT	CJD 4-15-64	LG 4-21-64	
REV	ECO NUMBER	DATE	BY	APVD			NAME	PART No.			
REVISIONS							TINI-JAX 2 COND.			42A	E

CUSTOMER DRAWING

Mouser Electronics

Authorized Distributor

Click to View Pricing, Inventory, Delivery & Lifecycle Information:

[Switchcraft:](#)

[42A](#)