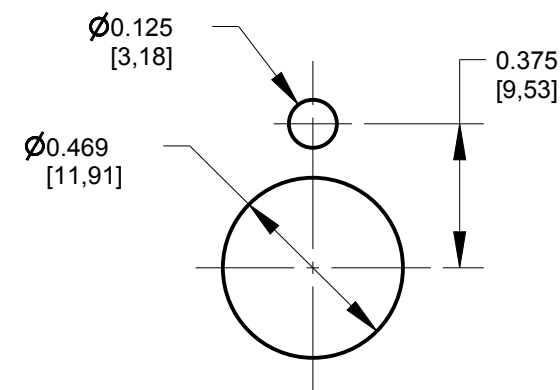
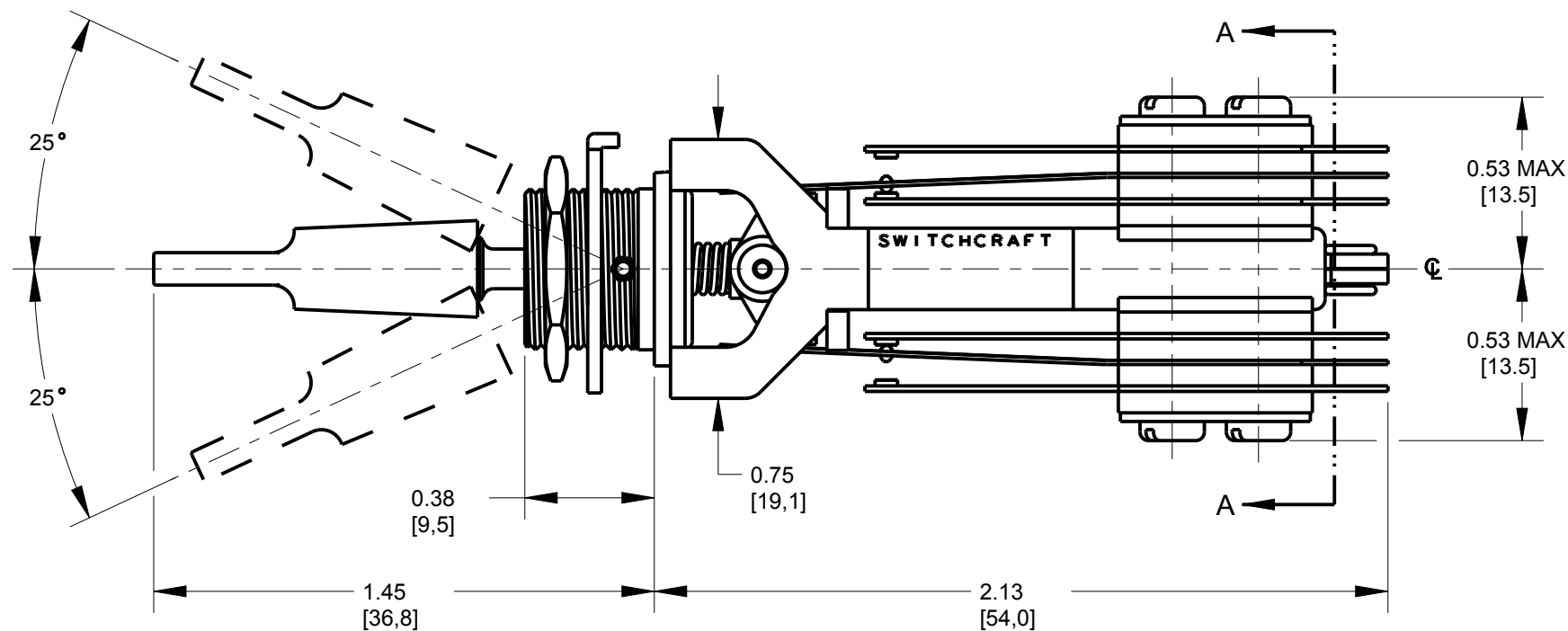
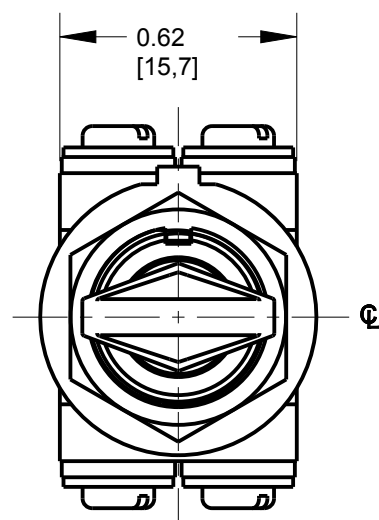
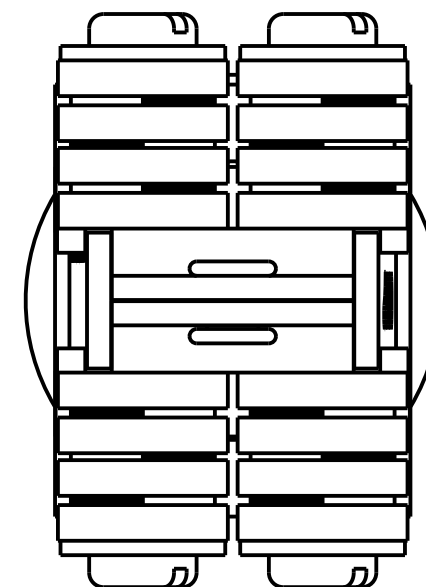


SCHEMATIC CIRCUIT
TYP (2)



RECOMMENDED PANEL CUT-OUT
FOR USE WITH NO-TURN WASHER



SECTION A-A
TERMINAL POSITIONS
SCALE 3:1

NOTES:
1. KNOB AND HARDWARE SHIPPED UNASSEMBLED.

2. MAX PANEL THICKNESS: 0.25 [6.4]

3. MATERIALS:
FRAME - CRS, ZINC PLATED
BUSHING & ACTUATOR - COPPER ALLOY, NICKEL PLATED
SPRINGS - SPECIAL COPPER ALLOY
TERMINALS - TINNED DIPPED SOLDER LUGS
INSULATORS - PHENOLIC
LIFTERS & ROLLERS - THERMOPLASTIC
SCREWS - CRS, NICKEL PLATED
HEX NUT - COPPER ALLOY, NICKEL PLATED
WASHER - CRS, NICKEL PLATED
KNOB - THERMOPLASTIC, BLACK

4. THIS PRODUCT IS RoHS COMPLIANT

REV	ECO NUMBER	DATE	BY	APVD
A	27887	05-12-17	PC	TJK
REVISIONS				

★ STAR SYMBOL DENOTES CRITICAL DIMENSION
UNLESS OTHERWISE SPECIFIED
1. ALL DIMENSIONS IN INCHES -TWO PLACE DECIMALS ±0.01 -THREE PLACE DECIMALS ±0.005 -ANGLES ±1° -ALL DIA. CONCENTRIC WITHIN 0.005 T.I.R.
2. FEATURES ON THE SAME CENTERLINE MUST BE ALIGNED WITHIN ±0.002
3. REMOVE ALL BURRS
DO NOT SCALE DRAWING

THIS DRAWING DESCRIBES A DESIGN CONSIDERED PROPRIETARY IN NATURE, DEVELOPED AND MANUFACTURED BY SWITCHCRAFT INC. AND IS RELEASED ON A CONFIDENTIAL BASIS FOR IDENTIFICATION PURPOSES ONLY.									
SIZE		WIDTH		MULT		LBS/M		TEMPER	
FINISH SPEC No.					MATERIAL SPEC No.				
FIRST USED ON			SCALE 2:1		<div>Switchcraft®</div>				
DATE DRAWN	BY	CHKD	APVD						
May-15-19	PC	PC 05-15-19	TJK 05-15-19		SHEET 1 OF 1				
NAME LT SERIES LEVER SWITCH 3 POSITION NON-LOCK, RoHS					PART No. 41312X				REV A

Mouser Electronics

Authorized Distributor

Click to View Pricing, Inventory, Delivery & Lifecycle Information:

Switchcraft:

[41312X](#) [41312](#) [41312L](#)