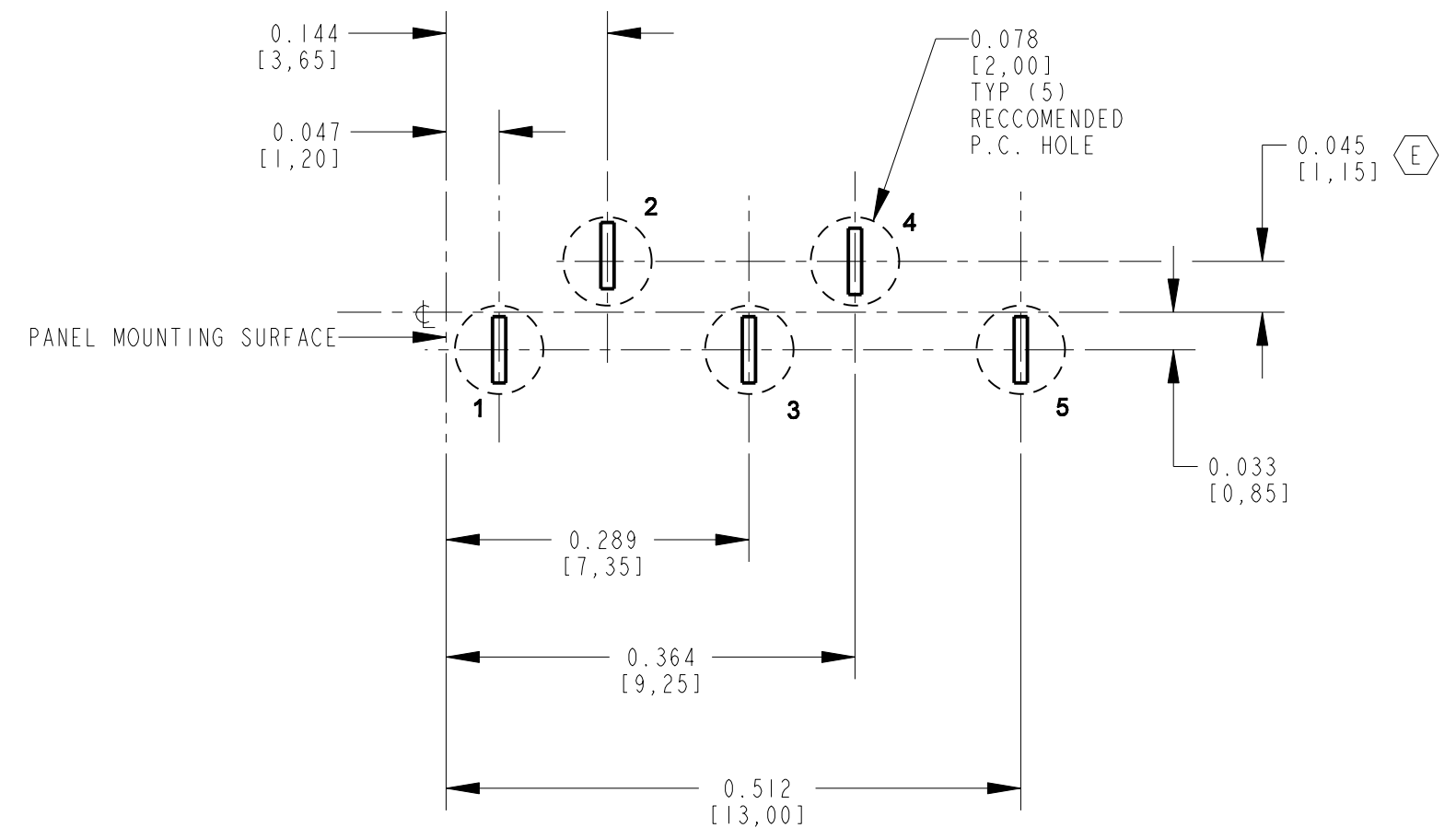
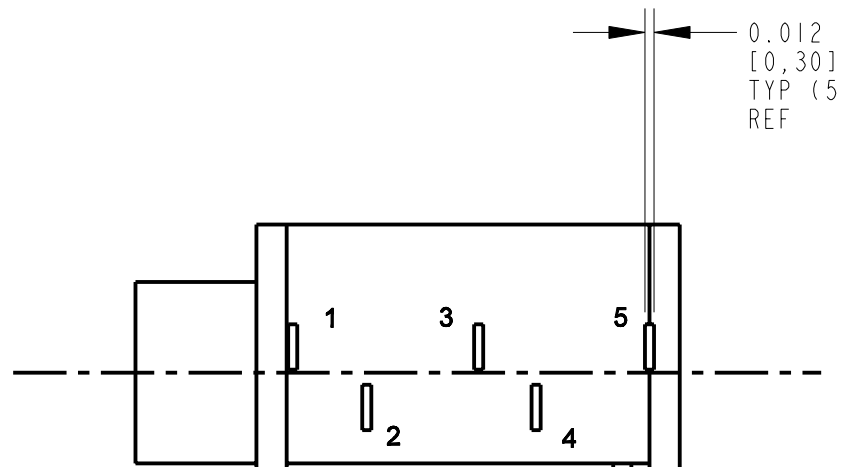
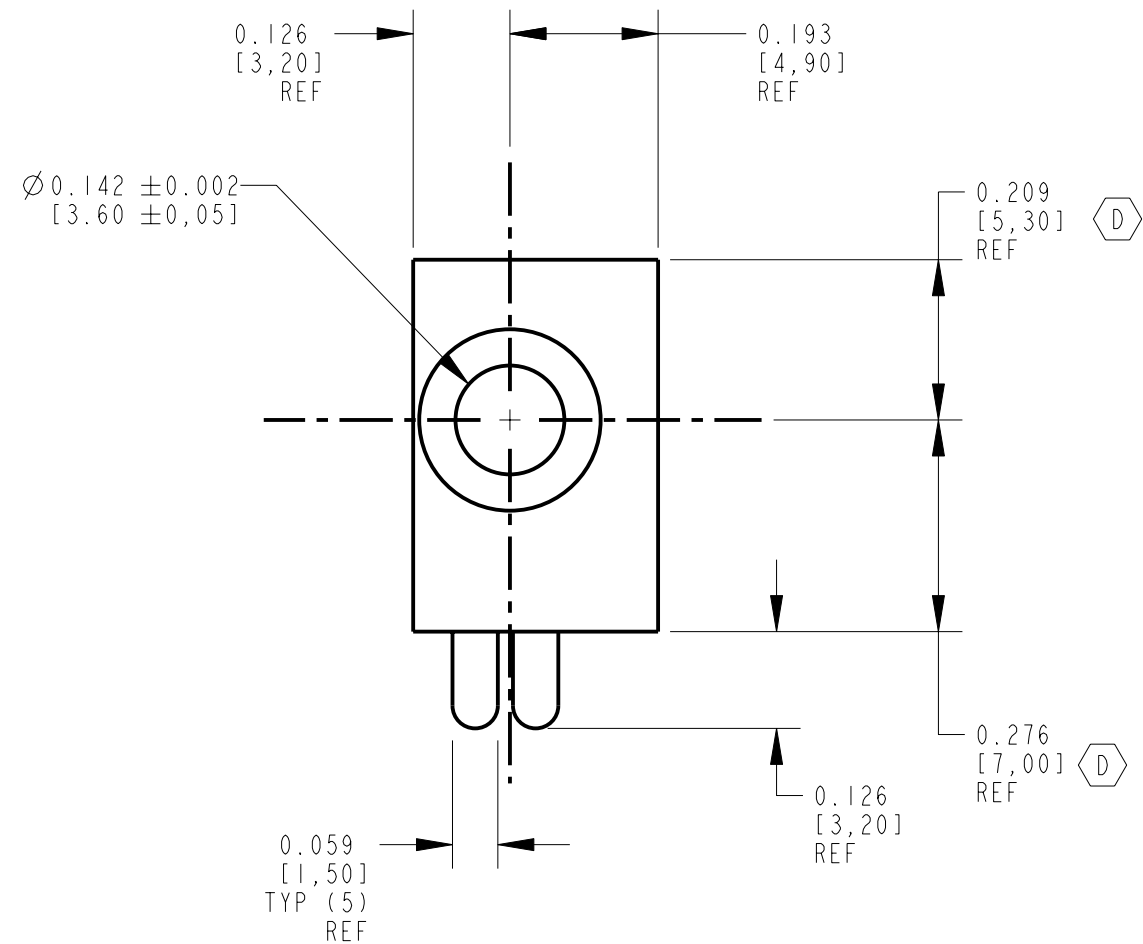


SCALE 4:1



| PART NO.    | SCHEMATIC |
|-------------|-----------|
| 35RAPC3BVN4 |           |
| 35RAPC4BVN4 |           |
| 35RAPC2BVN4 |           |
| 35RAPC2AVN4 |           |

- NOTES:
- ELECTRICAL:  
CONTACT RESISTANCE: 20 MILLIOHMS MAX, INITIAL  
50 MILLIOHMS MAX, AFTER LIFE  
INSULATION RESISTANCE: 50 MEGAOHMS MIN. AT 500 VDC  
DIELECTRIC WITHSTANDING VOLTAGE: 250 VAC
  - MECHANICAL:  
LIFE: 5000 CYCLES  
INSERTION FORCE: 0,4 KG TO 1,6 KG  
WITHDRAWAL FORCE: 0,4 KG TO 1,4 KG
  - MATERIALS:  
HOUSING: PBT +15% GLASS FILLED, BLACK, UL94V0  
BUSHING: BRASS, NICKEL PLATED  
SPRINGS: COPPER ALLOY, SILVER PLATED  
COVER: POLYCARBONATE, CLEAR, UL94V0.
  - THIS PRODUCT IS RoHS COMPLIANT.

|           |                               |          |     |      |   |  |          |           |        |        |
|-----------|-------------------------------|----------|-----|------|---|--|----------|-----------|--------|--------|
|           |                               |          |     |      | ★ STAR SYMBOL DENOTES CRITICAL DIMENSION  | THIS DRAWING DESCRIBES A DESIGN CONSIDERED PROPRIETARY IN NATURE, DEVELOPED AND MANUFACTURED BY SWITCHCRAFT INC. AND IS RELEASED ON A CONFIDENTIAL BASIS FOR IDENTIFICATION PURPOSES ONLY. |          |           |        |        |
| F         | 27551                         | 8-4-15   | TO  | TJK  | UNLESS OTHERWISE SPECIFIED<br>1. ALL DIMENSIONS IN INCHES<br>- TWO PLACE DECIMALS ±0.01<br>- THREE PLACE DECIMALS ±0.005<br>- FRACTIONAL DIMENSIONS ±1/64<br>- ANGLES ±1°<br>- ALL DIA. CONCENTRIC WITHIN 0.005 T.I.R.<br>2. FEATURES ON THE SAME CENTERLINE MUST BE ALIGNED WITHIN ±0.002<br>3. REMOVE ALL BURRS | SIZE   | WIDTH    | MULT      | LBS/M  | TEMPER |
| E         | 27312                         | 6-19-14  | TJK | TJK  |   | FINISH   | MATERIAL |           |        |        |
| D         | 26658                         | 11-10-10 | TO  | TJK  |   | SPEC No.   | SPEC No. |           |        |        |
| C         | ECO #21148                    | 6-4-97   | OM  | JJ   |   | FIRST USED ON  |          | SCALE 4:1 |        |        |
| B         | ECO #20182                    | 8-26-95  | SG  | TAO  |   | DATE DRAWN   | BY       | CHKD      | APVD   |        |
| A         | RELEASE TO MFG.<br>ECO #19561 | 5-4-95   | SG  | GHJ  |   | 4-May-95   | SG       | 5-8-95    | 5-8-95 |        |
| REV       | ECO NUMBER                    | DATE     | BY  | APVD |   | NAME   |          |           |        |        |
| REVISIONS |                               |          |     |      | DO NOT SCALE DRAWING  | 3.5 MM VERTICAL, NON THREADED MONO/STEREO JACK, RoHS   |          |           |        |        |
|           |                               |          |     |      |   | PART No. 35RAPC_VN4  |          |           |        | REV F  |

# Mouser Electronics

Authorized Distributor

Click to View Pricing, Inventory, Delivery & Lifecycle Information:

[Switchcraft:](#)

[35RAPC2BVN4](#)