

NOTES:

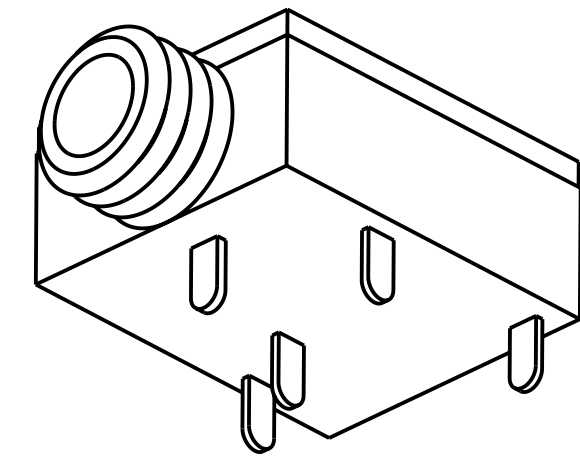
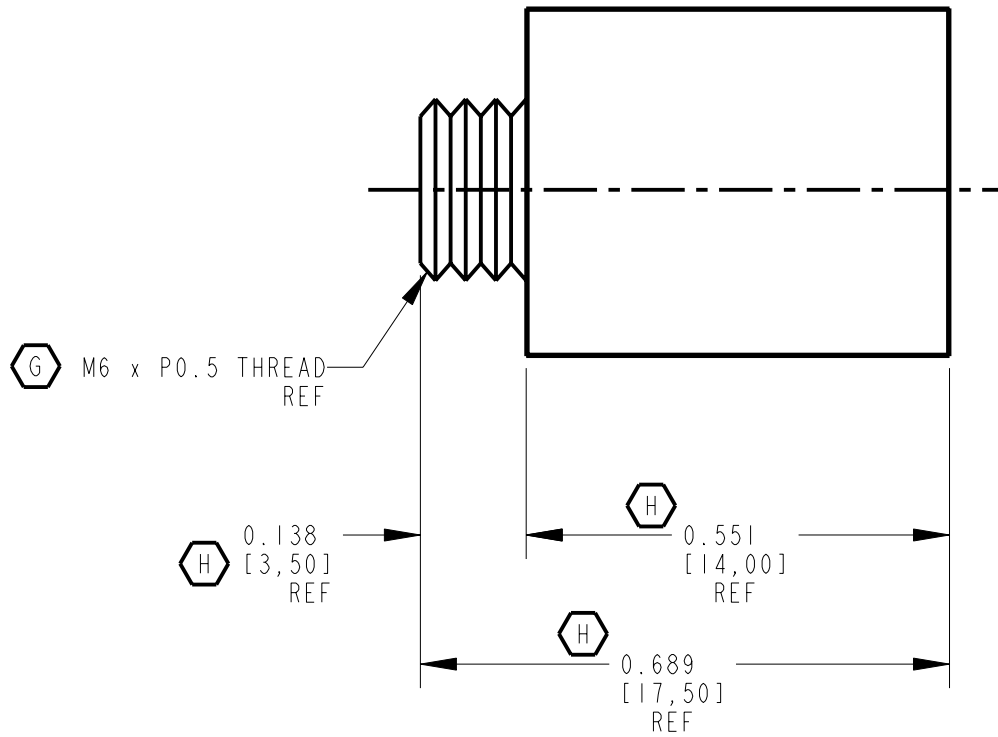
1. ELECTRICAL:
CONTACT RESISTANCE: 20 MILLIOHMS MAX. INITIAL
100 MILLIOHMS MAX. AFTER LIFE
INSULATION RESISTANCE: 100 MEGAOHMS MIN.
DIELECTRIC WITH STANDING VOLTAGE: 250 VAC.

2. MECHANICAL:
LIFE: 5000 CYCLES
INSERTION FORCE: 0,4 KG TO 1,6 KG
WITHDRAWAL FORCE: 0,4 KG TO 1,4 KG

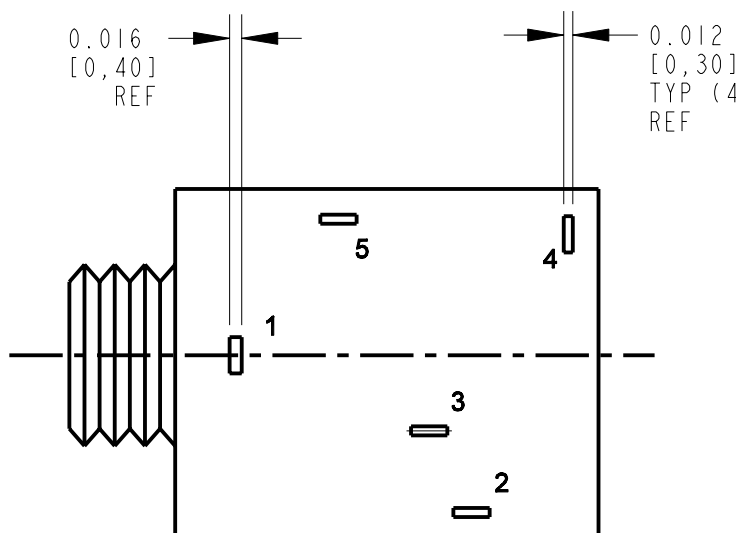
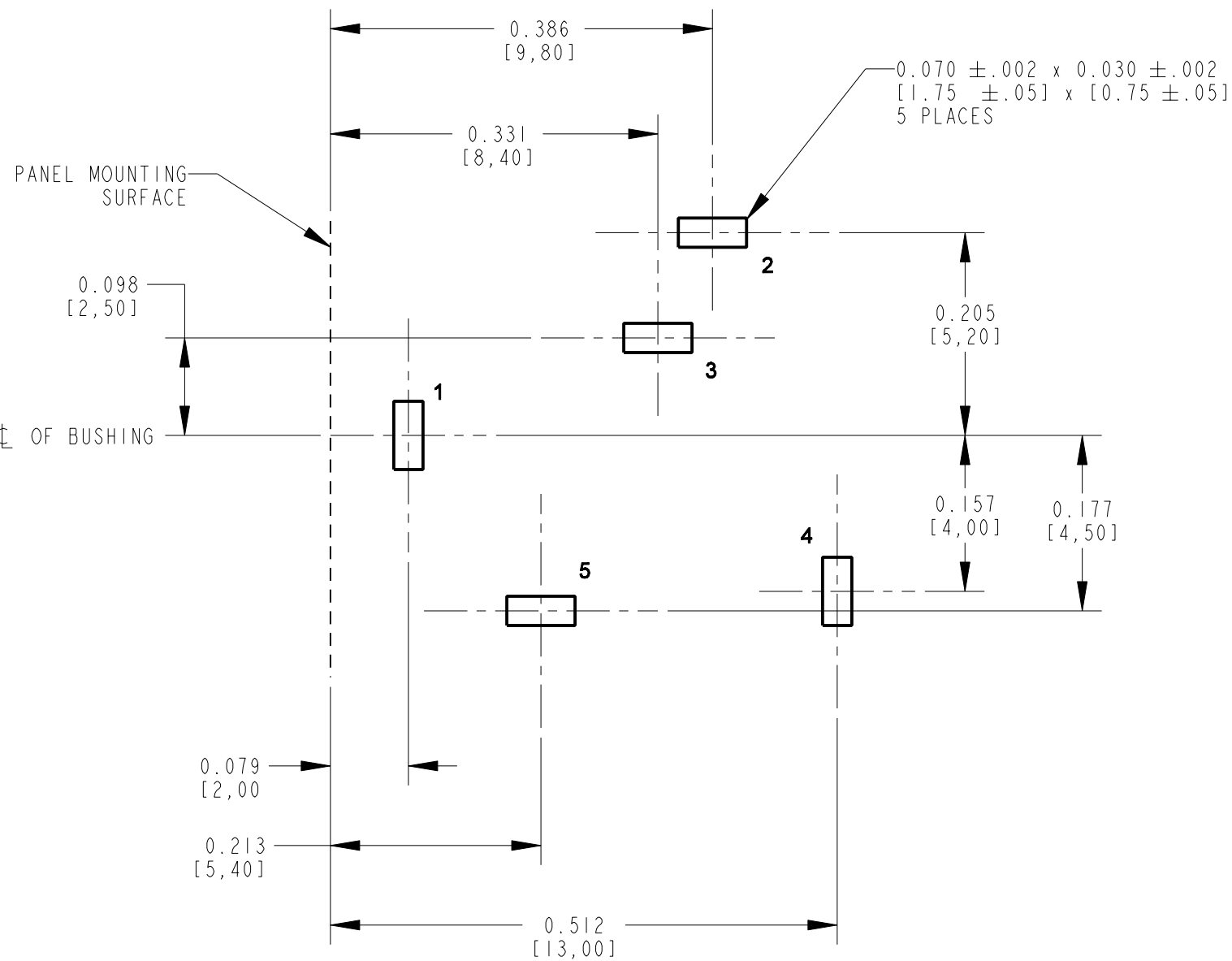
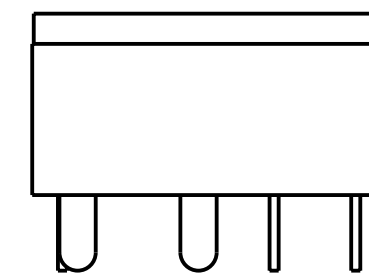
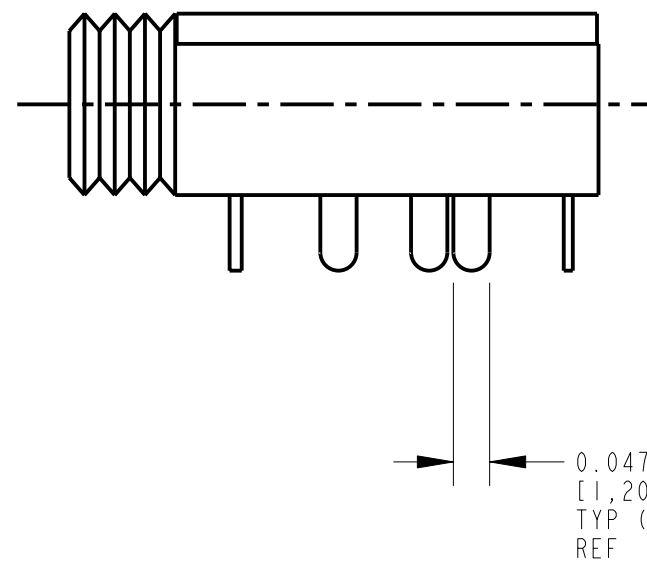
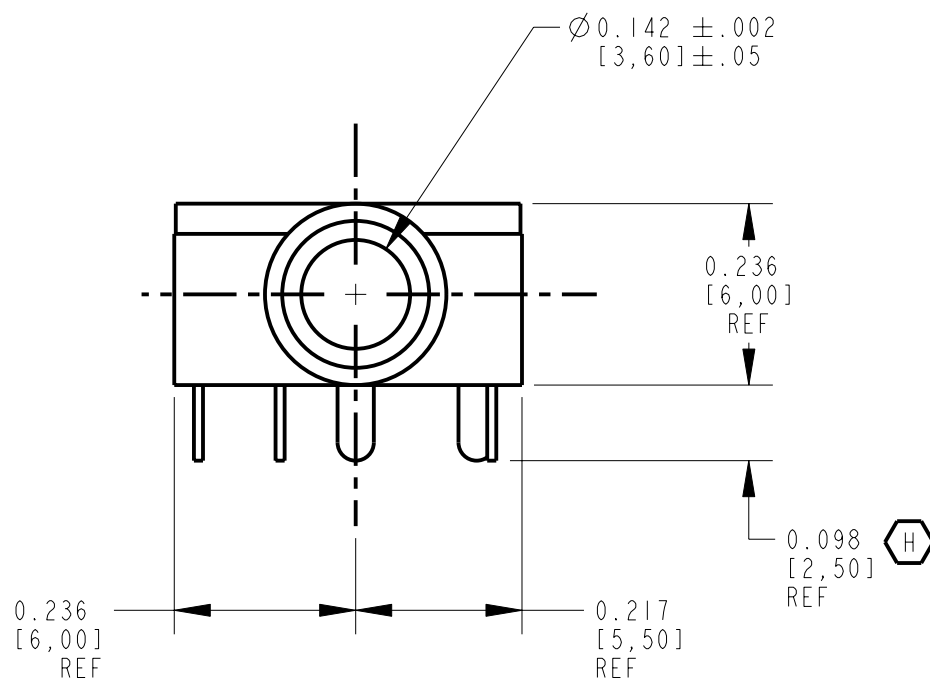
3. MATERIALS:
HOUSING: PBT BLACK, UL94-V0
BUSHING: BRASS, NICKEL PLATED
SPRINGS: COPPER ALLOY, SILVER PLATED
COVER: POLYCARBONATE, CLEAR, UL94-V0

4. MOUNTING NUT HARDWARE INCLUDED.

5. THIS PRODUCT IS RoHS COMPLIANT.



SCALE 4:1



PART NO.	SCHEMATIC
35RAPC3BH3	
35RAPC4BH3	
35RAPC2BH3	
35RAPC2AH3	

RECOMMENDED PC BOARD
COMPONENT SIDE

SUPPLIED WITH KNURL NUT

REV	ECO NUMBER	DATE	BY	APVD
J	27551	8-4-15	TO	TJK
H	26998	7-20-12	TO	TJK
G	26658	11-10-10	TO	TJK
F	26553	6-8-10	TJK	TJK
E	21847	7-29-97	RC	JJ
REVISIONS				

★ STAR SYMBOL DENOTES CRITICAL DIMENSION				
UNLESS OTHERWISE SPECIFIED				
1. ALL DIMENSIONS IN INCHES				
- TWO PLACE DECIMALS ±0.01				
- THREE PALCE DECIMALS ±0.005				
- FRACTIONAL DIMENSIONS ±1/64				
- ANGLES ±1°				
- ALL DIA. CONCENTRIC WITHIN 0.005 T.I.R.				
2. FEATURES ON THE SAME CENTERLINE MUST BE ALIGNED WITHIN ±0.002				
3. REMOVE ALL BURRS				
DO NOT SCALE DRAWING				

THIS DRAWING DESCRIBES A DESIGN CONSIDERED PROPRIETARY IN NATURE, DEVELOPED AND MANUFACTURED BY SWITCHCRAFT INC. AND IS RELEASED ON A CONFIDENTIAL BASIS FOR IDENTIFICATION PURPOSES ONLY.				
SIZE	WIDTH	MULT	LBS/M	TEMPER
FINISH			MATERIAL	
SPEC No.			SPEC No.	
FIRST USED ON			SCALE 4:1	
DATE DRAWN	BY	CHKD	APVD	
9-Dec-93	ES	ES	EBR	
NAME			PART No.	
3.5MM HORIZONTAL STEREO JACK, RoHS			35RAPC_H3	
REV			J	

CUSTOMER DRAWING

Mouser Electronics

Authorized Distributor

Click to View Pricing, Inventory, Delivery & Lifecycle Information:

[Switchcraft:](#)

[35RAPC2BH3](#)