

F

E

D

C

B

A

F

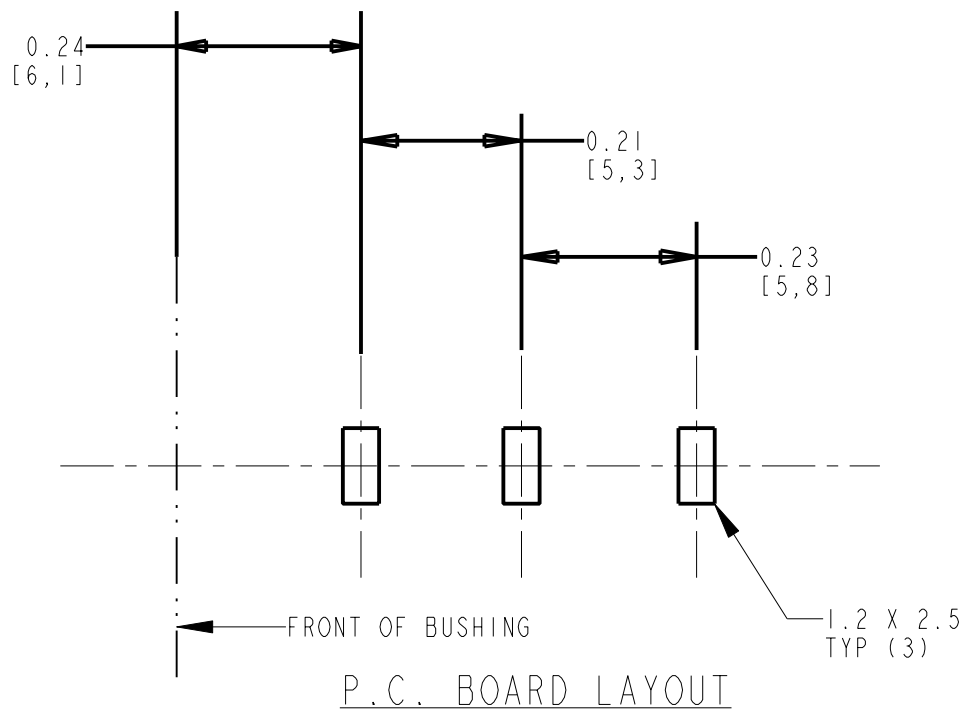
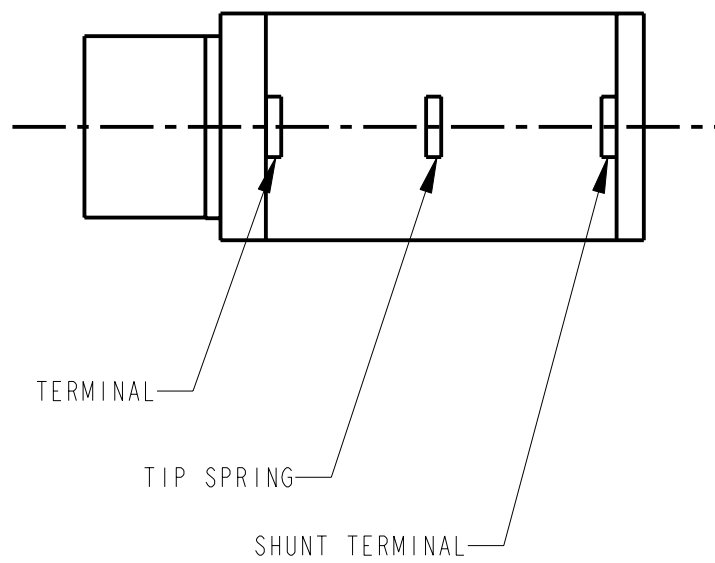
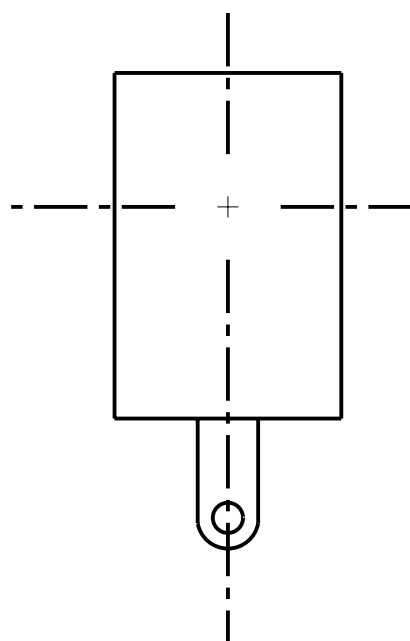
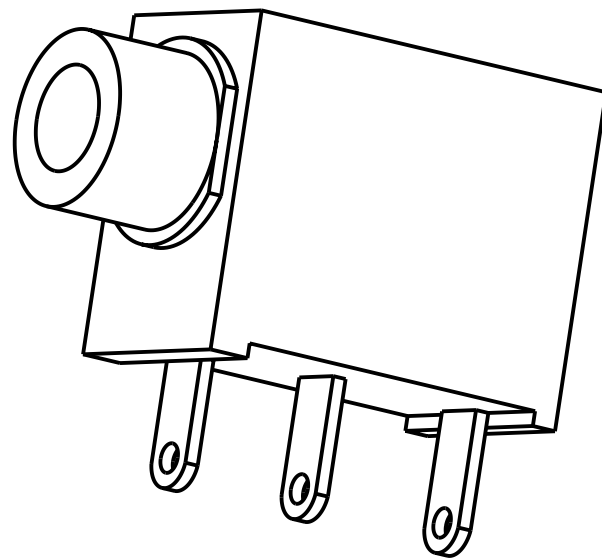
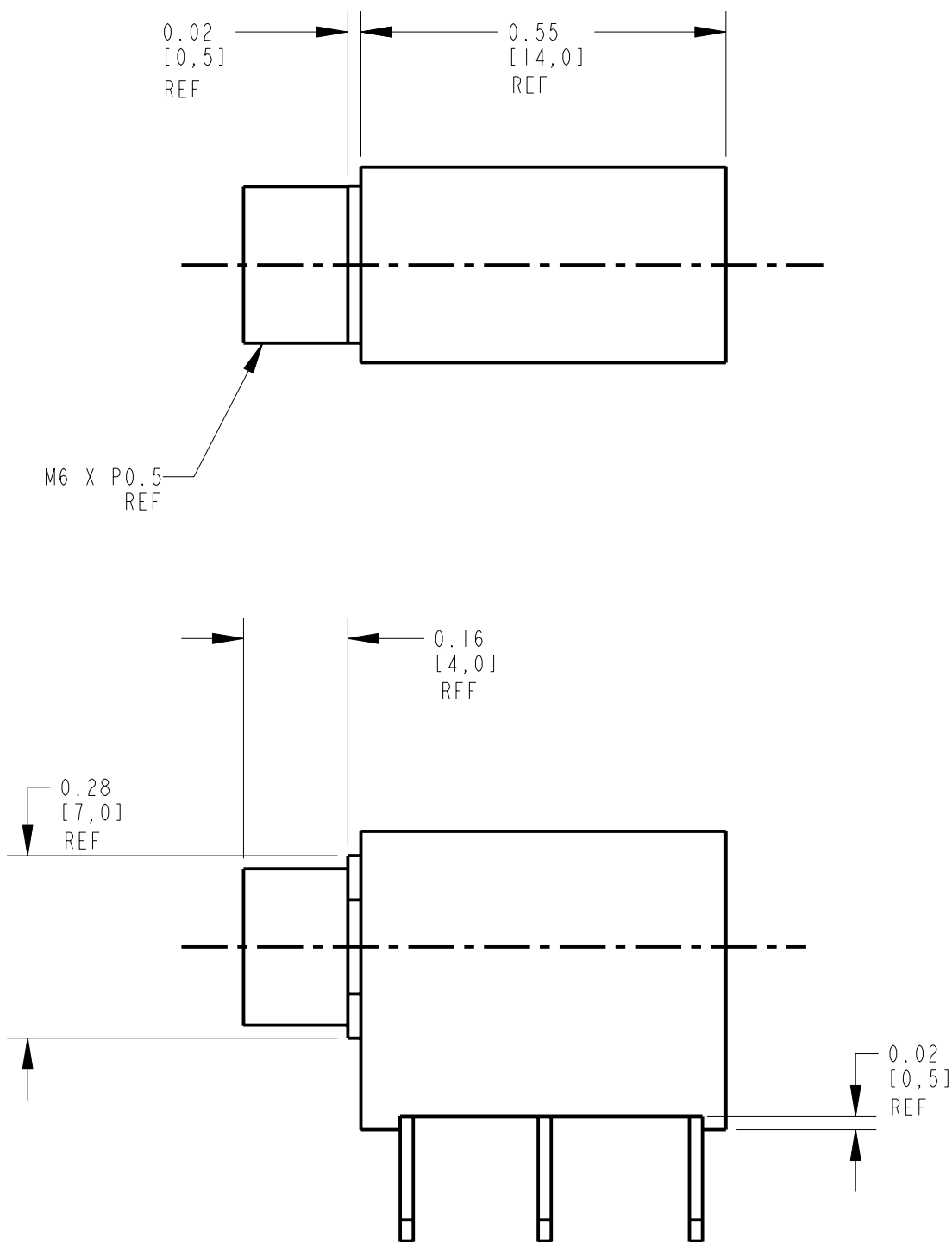
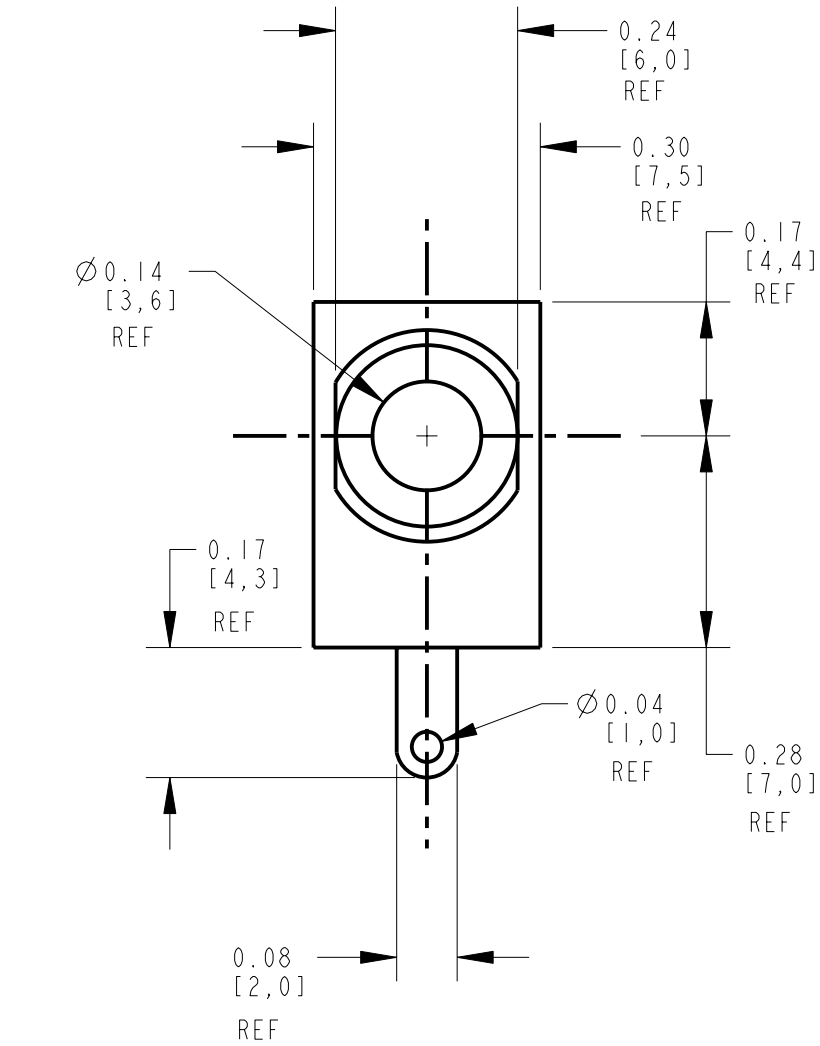
E

D

C

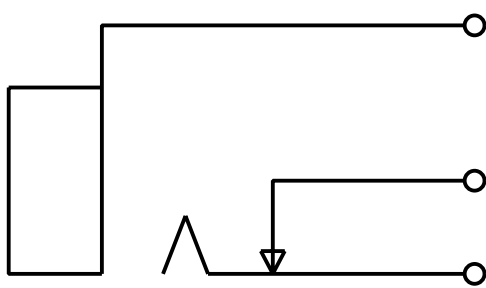
B

A



SPECIFICATIONS:

- CONTACT RESISTANCE: 20 mΩ MAX
- INSULATION RESISTANCE: 100 mΩ MIN. AT 250V DC.
- DIELECTRIC STRENGTH: 250V AC 1 MINUTE.
- LIFE TEST: JACK SHALL WITHSTAND 5000 CYCLES OF INSERTION AND WITHDRAWAL WITH TESTING PLUG, AFTER TEST THE CONTACT RESISTANCE SHALL NOT EXCEED 0.1 Ω
- MEASURING CONDITION: TEMPERATURE FORM 5°C TO 35°C
RELATIVE HUMIDITY FOR 40% TO 85%.
- INSERTION FORCE: 0.4Kg~1.6Kg.
- WITHDRAWAL FORCE: 0.4Kg~1.2Kg.



CIRCUIT DIAGRAM

						★ STAR SYMBOL DENOTES CRITICAL DIMENSION		THIS DRAWING DESCRIBES A DESIGN CONSIDERED PROPRIETARY IN NATURE, DEVELOPED AND MANUFACTURED BY SWITCHCRAFT INC. AND IS RELEASED ON A CONFIDENTIAL BASIS FOR IDENTIFICATION PURPOSES ONLY.											
						UNLESS OTHERWISE SPECIFIED		SIZE		WIDTH		MULT		LBS/M		TEMPER			
						1. ALL DIMENSIONS IN INCHES - TWO PLACE DECIMALS ±0.01 - THREE PALCE DECIMALS ±0.005 - FRACTIONAL DIMENSIONS ±1/64 - ANGLES ±1° - ALL DIA. CONCENTRIC WITHIN 0.005 T.I.R.		FINISH SPEC No.				MATERIAL SPEC No.							
						2. FEATURES ON THE SAME CENTERLINE MUST BE ALIGNED WITHIN ±0.002		FIRST USED ON				SCALE 4.000				Switchcraft®			
B	ECO #20278	11-5-96	MM	JC		3. REMOVE ALL BURRS		DATE DRAWN 28-Oct-93		BY LR	CHKD LR	APVD JC		SHEET					
A	FIRST DRAWN	10-28-93	LR	JC		DO NOT SCALE DRAWING		NAME 3.5 MM MONO JACK				PART No. 35RAPC2AV				REV B			
REV	ECO NUMBER	DATE	BY	APVD															
REVISIONS																			

Mouser Electronics

Authorized Distributor

Click to View Pricing, Inventory, Delivery & Lifecycle Information:

[Switchcraft:](#)

[35RAPC2AV](#)