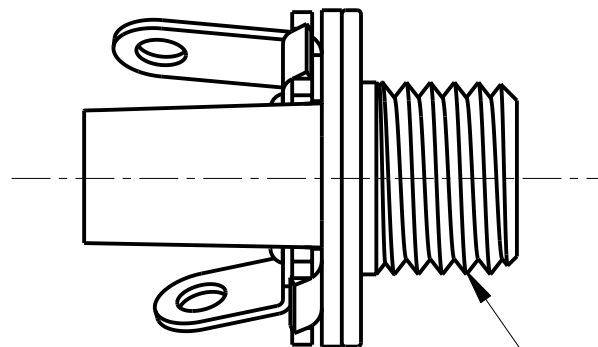
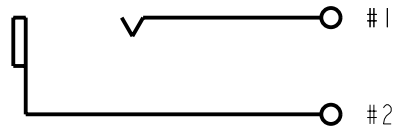


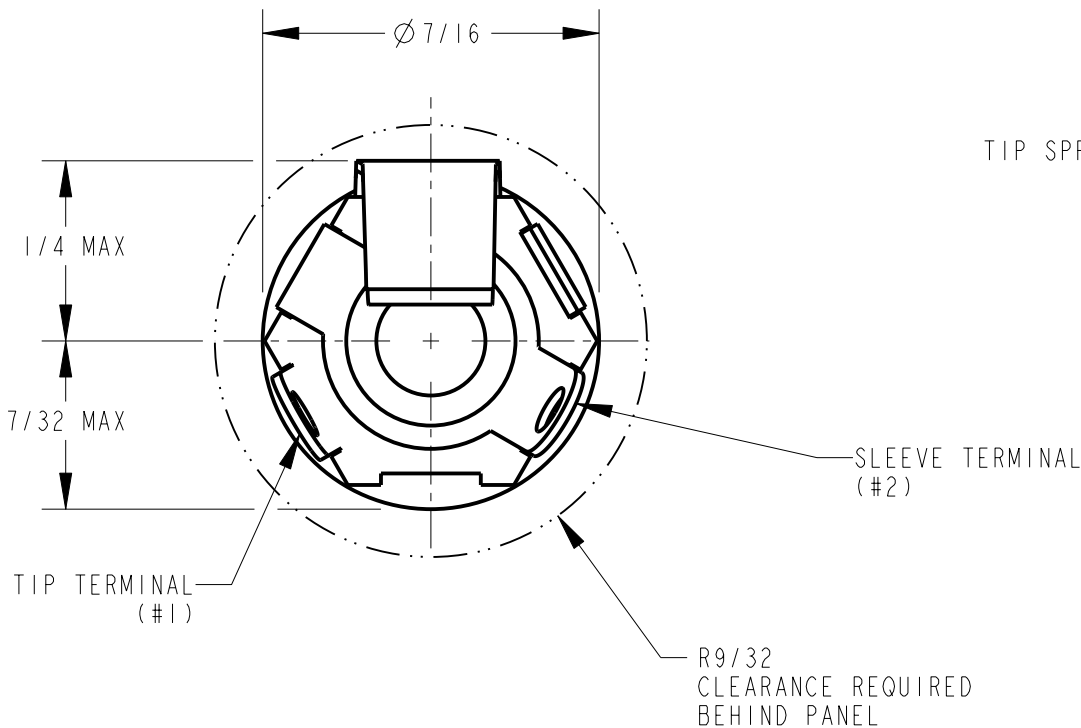
SCALE 3:1



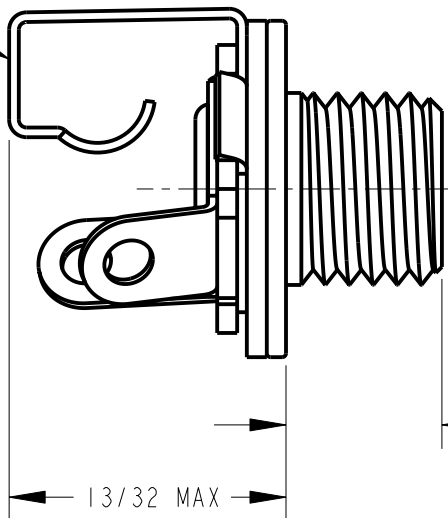
1/4-32 UNEF-2A THREAD



SCHEMATIC CIRCUIT

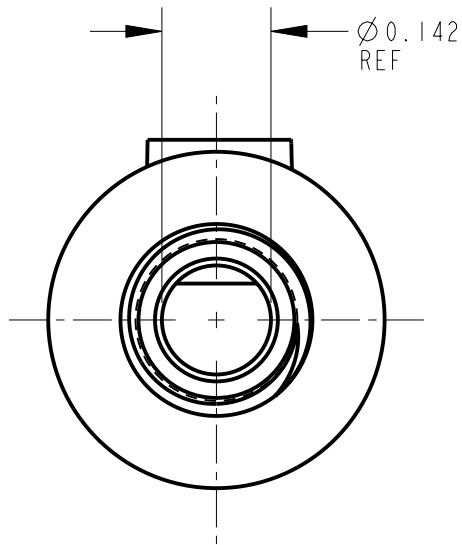


TIP SPRING



0.203 REF

13/32 MAX



NOTES:

1. K163A WASHER AND K163B NUT SHIPPED UNASSEMBLED.
2. REQUIREMENTS:  
SPRING LIFE: INSERTION AND WITHDRAWAL: 5000 CYCLES.  
DIELECTRIC STRENGTH: 250 VRMS A.C. BETWEEN TIP SPRING AND BUSHING.
3. MATERIALS:  
BUSHING - BRASS, NICKEL PLATED  
INSULATORS - PHENOLIC & THERMOPLASTIC  
TIP SPRING - NICKEL SILVER, SILVER PLATED  
SLEEVE TERMINAL - BRASS, HOT TIN DIPPED  
WASHER - STEEL, NICKEL PLATED  
NUT - COPPER ALLOY, NICKEL PLATED

CUSTOMER DRAWING

					★ STAR SYMBOL DENOTES CRITICAL DIMENSION	THIS DRAWING DESCRIBES A DESIGN CONSIDERED PROPRIETARY IN NATURE, DEVELOPED AND MANUFACTURED BY SWITCHCRAFT INC. AND IS RELEASED ON A CONFIDENTIAL BASIS FOR IDENTIFICATION PURPOSES ONLY.					
					UNLESS OTHERWISE SPECIFIED 1. ALL DIMENSIONS IN INCHES - TWO PLACE DECIMALS ±0.01 - THREE PLACE DECIMALS ±0.005 - FRACTIONAL DIMENSIONS ±1/64 - ANGLES ±1° - ALL DIA. CONCENTRIC WITHIN 0.005 T.I.R. 2. FEATURES ON THE SAME CENTERLINE MUST BE ALIGNED WITHIN ±0.002 3. REMOVE ALL BURRS	SIZE	WIDTH	MULT	LBS/M	TEMPER	
						FINISH				MATERIAL	
						SPEC No.				SPEC No.	
						FIRST USED ON		SCALE		<b>Switchcraft®</b>	
								4:1			
D	27196	8-28-13	TO	TJK		DATE DRAWN	BY	CHKD	APVD		
C	ECO #20875	7-10-97	MM	JF		31-Mar-94	SG	BD 4-18-94	GHJ 4-18-94		
B	20627	3-9-96	SG	SG							
A	FIRST DRAWN	3-31-94	SG	GHJ							
REV	ECO NUMBER	DATE	BY	APVD		NAME				PART No.	REV
REVISIONS					DO NOT SCALE DRAWING	3.5 MM 2 CONDUCTOR JAX				35PM1	D

# Mouser Electronics

Authorized Distributor

Click to View Pricing, Inventory, Delivery & Lifecycle Information:

[Switchcraft:](#)

[35PM1](#)