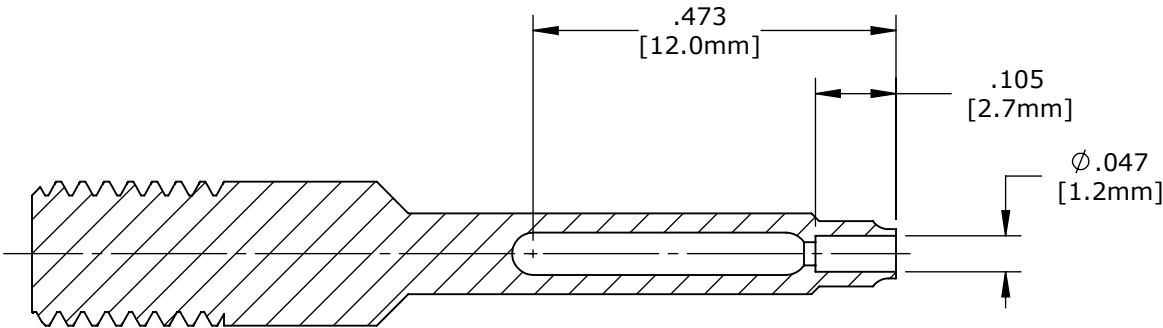
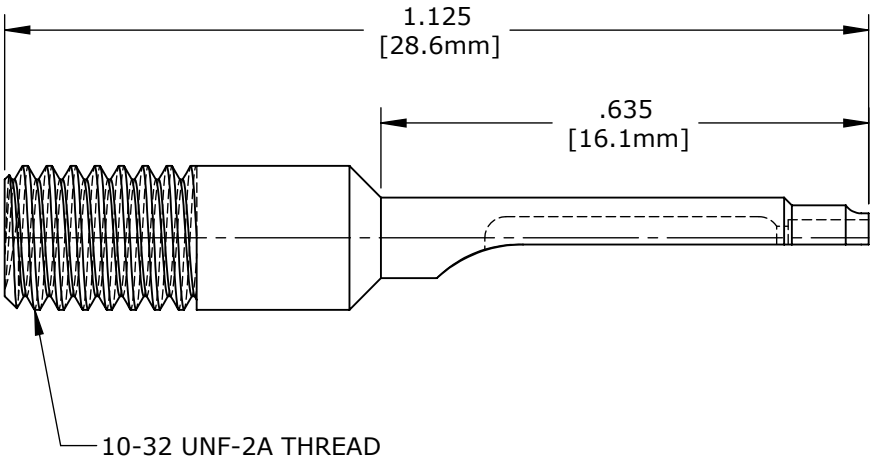
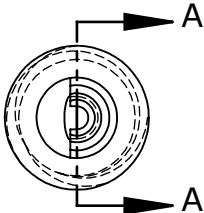


- NOTES:
- 1. MATERIAL: STAINLESS STEEL.
 - 2. HEAT TREAT: FINISHED HARDNESS
 - 3. ALL DIMENSION FOR REFERENCE ONLY.



SECTION A-A



PROPRIETARY

THIS DOCUMENT CONTAINS CONFIDENTIAL INFORMATION PROPRIETARY TO CONXALL CORPORATION. ANY REPRODUCTION, DISCLOSURE, OR USE OF THIS DOCUMENT /INFORMATION IS EXPRESSLY PROHIBITED UNLESS AUTHORIZED IN WRITING BY CONXALL CORPORATION.

DIMENSIONS IN BRACKETS [] ARE METRIC

D	AN	06-13-17	CREATED SHEET PER DOR 17-7819JS			
REV.	INIT.	DATE	DESCRIPTION			
ALL INFORMATION ILLUSTRATED IS THE PROPERTY OF "CONXALL CORPORATION." UNAUTHORIZED DUPLICATION OR DISTRIBUTION OF THIS DOCUMENT IS PROHIBITED. ALL UNITS ARE IN FEET, INCHES, FRACTION OF INCHES AND DECIMALS. = CRITICAL CHARACTERISTIC FLAG PER SPEC. XXXX			ORIG. DRAWN BY: DATE: PAK 01/25/11		 601 E. WILDWOOD VILLA PARK, IL 60181	
			CHECKED BY:			
			APPROVED BY:		TITLE: CONTACT INSERTION BIT #26 CONTACTS PIN / SOCKET SIZE 24 AWG BARREL	
			SCALE NTS	SIZE A	SHEET 1 OF 1	CUSTOMER: STANDARD PRODUCT
FILE: 356-26		DIRECTORY: SLW	PART NUMBER: 356-26	REV D		

Mouser Electronics

Authorized Distributor

Click to View Pricing, Inventory, Delivery & Lifecycle Information:

Switchcraft:

356-26-K