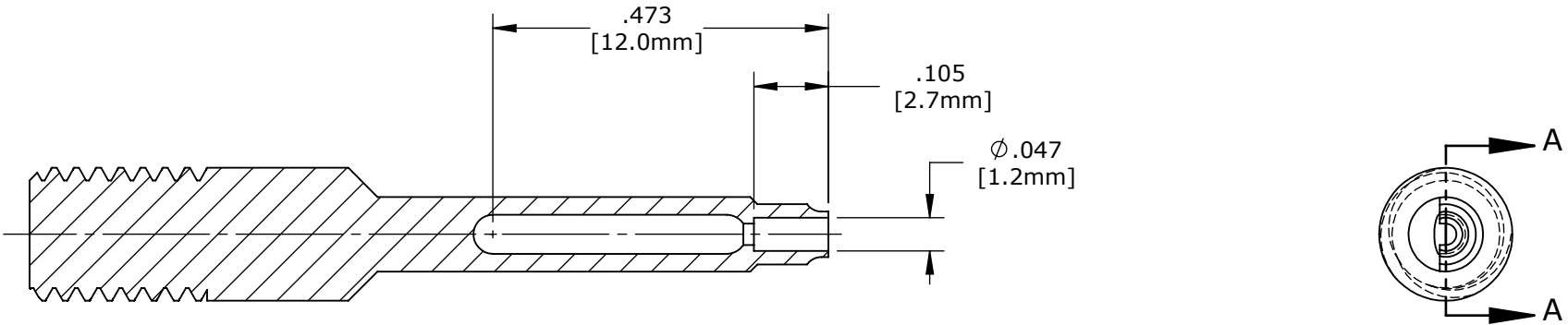
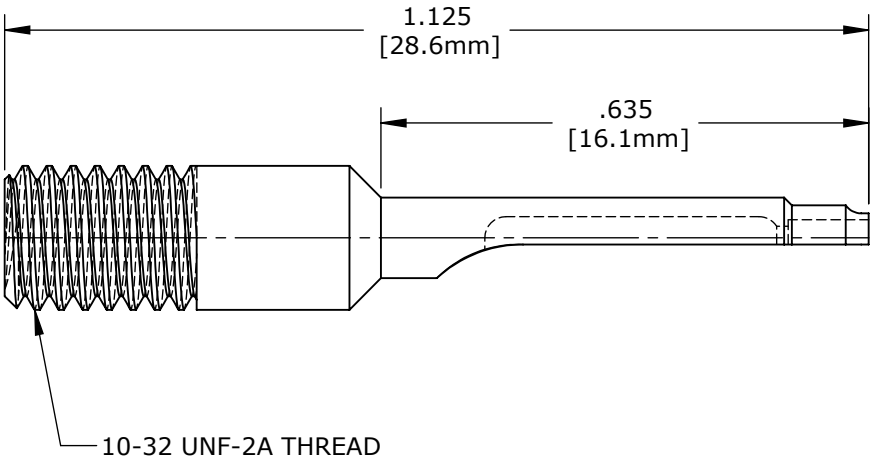


- NOTES:
- 1. MATERIAL: STAINLESS STEEL.
 - 2. HEAT TREAT: FINISHED HARDNESS
 - 3. ALL DIMENSION FOR REFERENCE ONLY.




SECTION A-A



PROPRIETARY

THIS DOCUMENT CONTAINS CONFIDENTIAL INFORMATION PROPRIETARY TO CONXALL CORPORATION. ANY REPRODUCTION, DISCLOSURE, OR USE OF THIS DOCUMENT /INFORMATION IS EXPRESSLY PROHIBITED UNLESS AUTHORIZED IN WRITING BY CONXALL CORPORATION.

DIMENSIONS IN BRACKETS [] ARE METRIC

D	AN	06-13-17	CREATED SHEET PER DOR 17-7819JS			
REV.	INIT.	DATE	DESCRIPTION			
ALL INFORMATION ILLUSTRATED IS THE PROPERTY OF "CONXALL CORPORATION." UNAUTHORIZED DUPLICATION OR DISTRIBUTION OF THIS DOCUMENT IS PROHIBITED.			ORIG. DRAWN BY: DATE:		 601 E. WILDWOOD VILLA PARK, IL 60181	
			PAK 01/25/11			
ALL UNITS ARE IN FEET, INCHES, FRACTION OF INCHES AND DECIMALS.			CHECKED BY:		TITLE: CONTACT INSERTION BIT #26 CONTACTS PIN / SOCKET SIZE 24 AWG BARREL	
			APPROVED BY:			
= CRITICAL CHARACTERISTIC FLAG PER SPEC. XXXX			SCALE	SIZE	SHEET	CUSTOMER: STANDARD PRODUCT
			NTS	A	1 OF 1	
FILE:			DIRECTORY:	PART NUMBER:	REV	
356-26			SLW	356-26	D	

Mouser Electronics

Authorized Distributor

Click to View Pricing, Inventory, Delivery & Lifecycle Information:

Switchcraft:

[356-26-K](#)