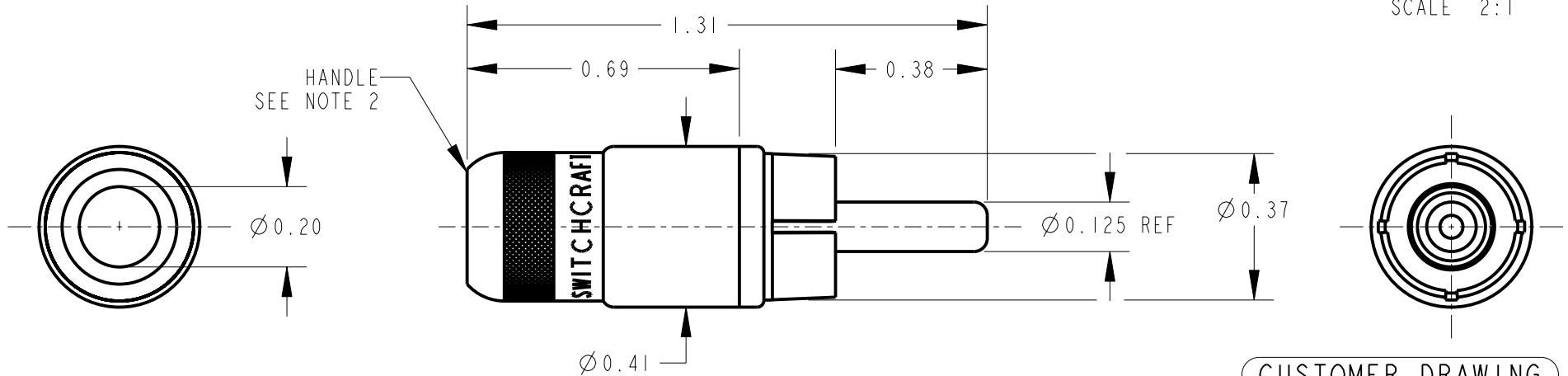
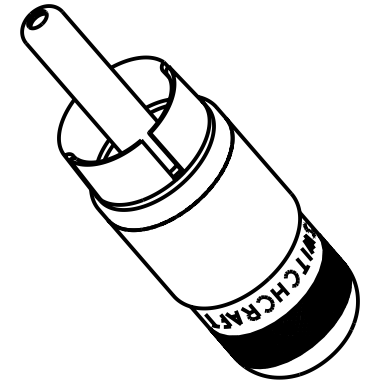
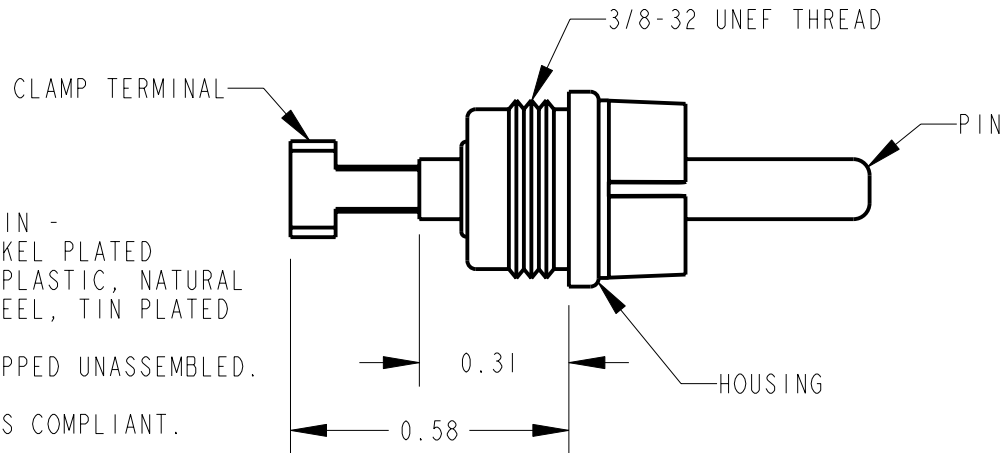


NOTES:

1. MATERIALS:  
HANDLE, HOUSING & PIN -  
COPPER ALLOY, NICKEL PLATED  
INSULATORS - THERMOPLASTIC, NATURAL  
CLAMP TERMINAL - STEEL, TIN PLATED
2. K221 HANDLE KIT SHIPPED UNASSEMBLED.
3. THIS PRODUCT IS RoHS COMPLIANT.



STAR SYMBOL DENOTES CRITICAL DIMENSION

UNLESS OTHERWISE SPECIFIED

1. ALL DIMENSIONS IN INCHES  
- TWO PLACE DECIMALS  $\pm 0.01$   
- THREE PLACE DECIMALS  $\pm 0.005$   
- ANGLES  $\pm 1^\circ$   
- ALL DIA. CONCENTRIC WITHIN 0.005 T.I.R.

2. FEATURES ON THE SAME CENTERLINE  
MUST BE ALIGNED WITHIN  $\pm 0.002$

3. REMOVE ALL BURRS

DO NOT SCALE DRAWING

THIS DRAWING DESCRIBES A DESIGN CONSIDERED PROPRIETARY IN NATURE, DEVELOPED AND MANUFACTURED BY SWITCHCRAFT INC. AND IS RELEASED ON A CONFIDENTIAL BASIS FOR IDENTIFICATION PURPOSES ONLY.

SIZE		WIDTH		MULT		LBS/M		TEMPER	
FINISH					MATERIAL				
SPEC No.					SPEC No.				
FIRST USED ON			SCALE		<b>Switchcraft®</b>				
			5:2						
DATE DRAWN		BY	CHKD	APVD					
16-Apr-13	TO		TO	TJK					
			4-16-13	4-16-13	SHEET   OF				
NAME					PART No.				REV
PHONO PLUG ASSEMBLY, RoHS					3507				E

REV	ECO NUMBER	DATE	BY	APVD
E	27141 REDRAWN	5-7-13	TO	TJK
REVISIONS				

# Mouser Electronics

Authorized Distributor

Click to View Pricing, Inventory, Delivery & Lifecycle Information:

[Switchcraft:](#)

[3507](#)