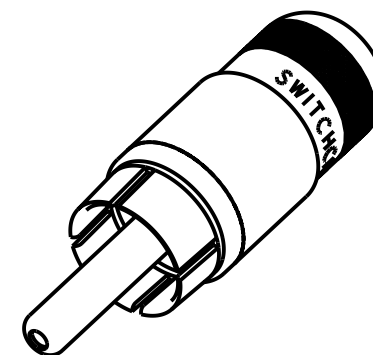
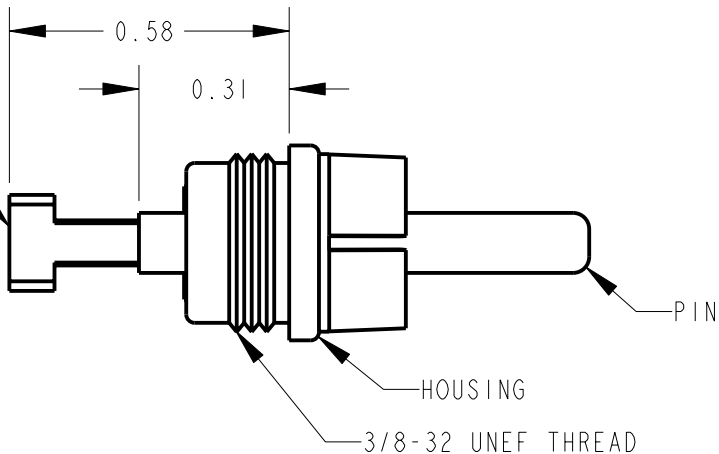


NOTES:

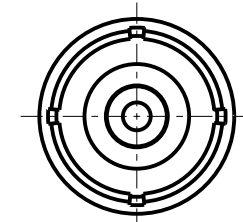
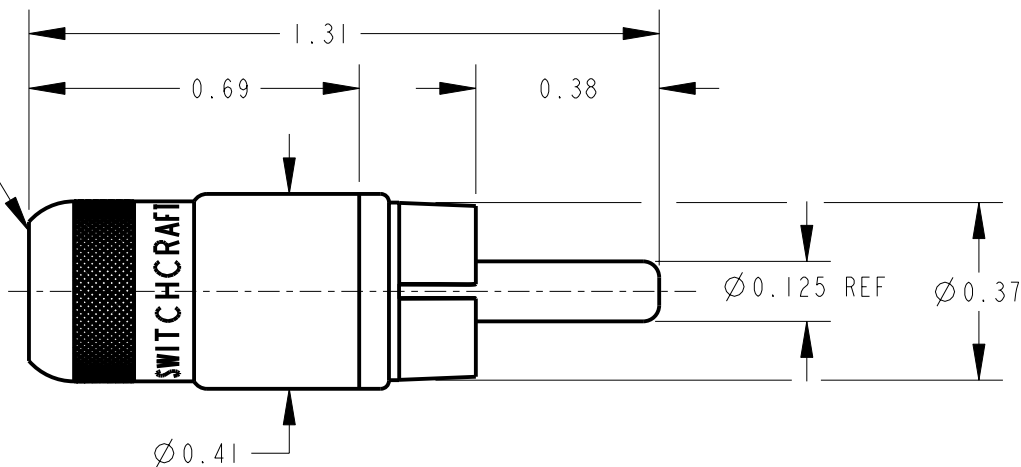
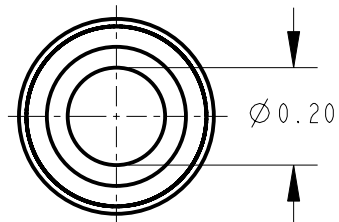
1. MATERIALS:  
HANDLE, HOUSING & PIN -  
COPPER ALLOY, NICKEL PLATED  
INSULATING WASHERS - PHENOLIC  
CLAMP TERMINAL - STEEL, TIN PLATED
2. K221 HANDLE KIT SHIPPED UNASSEMBLED.
3. THIS PRODUCT IS RoHS COMPLIANT.

CLAMP TERMINAL



SCALE 2:1

HANDLE  
SEE NOTE 2



CUSTOMER DRAWING



STAR SYMBOL DENOTES CRITICAL DIMENSION

THIS DRAWING DESCRIBES A DESIGN CONSIDERED PROPRIETARY IN NATURE, DEVELOPED AND MANUFACTURED BY SWITCHCRAFT INC. AND IS RELEASED ON A CONFIDENTIAL BASIS FOR IDENTIFICATION PURPOSES ONLY.

UNLESS OTHERWISE SPECIFIED

1. ALL DIMENSIONS IN INCHES  
- TWO PLACE DECIMALS  $\pm 0.01$   
- THREE PLACE DECIMALS  $\pm 0.005$   
- ANGLES  $\pm 1^\circ$   
- ALL DIA. CONCENTRIC WITHIN 0.005 T.I.R.

2. FEATURES ON THE SAME CENTERLINE  
MUST BE ALIGNED WITHIN  $\pm 0.002$

3. REMOVE ALL BURRS

SIZE	WIDTH	MULT	LBS/M	TEMPER
------	-------	------	-------	--------

FINISH	MATERIAL
SPEC No.	SPEC No.

FIRST USED ON	SCALE
	5:2

DATE DRAWN	BY	CHKD	APVD
15-Apr-13	TO	TO	TJK
		4-15-13	4-15-13

**Switchcraft®**

REV	ECO NUMBER	DATE	BY	APVD
E	27141 REDRAWN	5-7-13	TO	TJK

REVISIONS

DO NOT SCALE DRAWING

NAME	PART No.	REV
PHONO PLUG ASSEMBLY, RoHS	3502	E

Pro/Engineer CAD File

A

# Mouser Electronics

Authorized Distributor

Click to View Pricing, Inventory, Delivery & Lifecycle Information:

[Switchcraft:](#)

[3502](#)