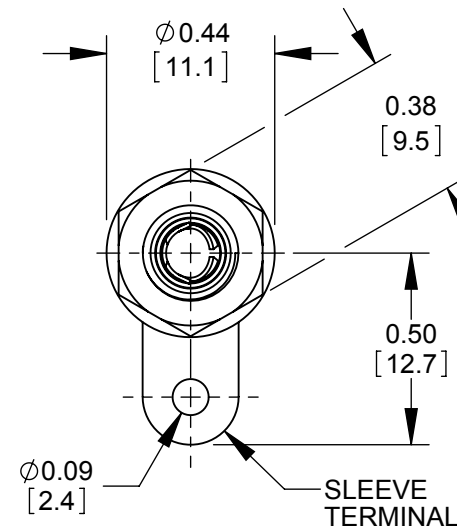
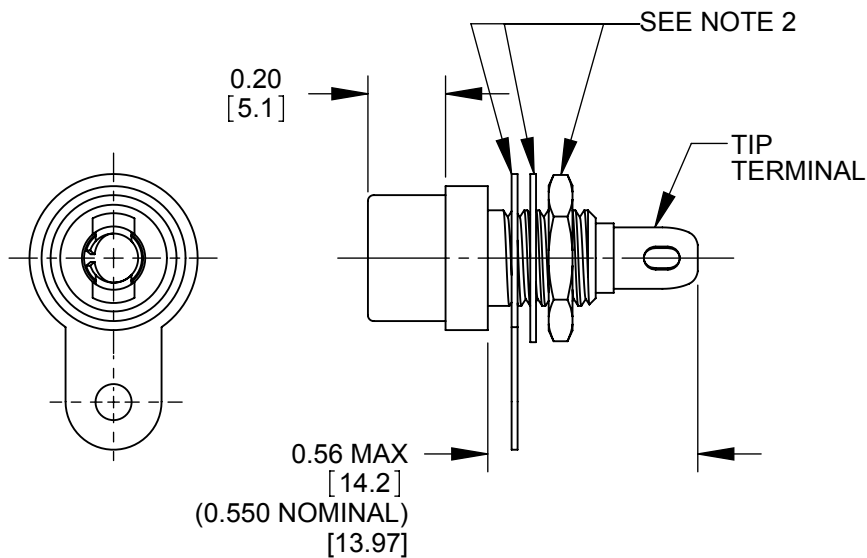


#### NOTES:

1. MATES WITH STANDARD  $\phi$  1/8 PHONO PLUG.
2. SLEEVE TERMINAL, WASHER, AND HEX NUT PACKAGED UNASSEMBLED.
3. MATERIALS  
HOUSING - COPPER ALLOY, TIN PLATED  
INSULATORS - THERMOPLASTIC  
TIP TERMINAL - COPPER ALLOY, MATTE TIN PLATED  
SLEEVE TERMINAL - STEEL, TIN PLATED  
WASHER - STEEL, NICKEL PLATED  
HEX NUT - COPPER ALLOY, NICKEL PLATED
4. THIS PRODUCT IS RoHS COMPLIANT.



**CUSTOMER DRAWING**

					<div>UNLESS OTHERWISE SPECIFIED</div> <div>1. ALL DIMENSIONS IN INCHES</div> <div>- TWO PLACE DECIMALS    ±0.02</div> <div>- THREE PLACE DECIMALS    ±0.005</div>	THIS DRAWING DESCRIBES A DESIGN CONSIDERED PROPRIETARY IN NATURE, DEVELOPED AND MANUFACTURED BY SWITCHCRAFT INC. AND IS RELEASED ON A CONFIDENTIAL BASIS FOR IDENTIFICATION PURPOSES ONLY.													
						SIZE	WIDTH		MULT		LBS/M		TEMPER						
						FINISH						MATERIAL							
						SPEC No.						SPEC No.							
C	27760	8-31-16	TO	TJK		FIRST USED ON				SCALE 2:1		Switchcraft®							
B	25504	12/8/06	RS	TJK		DATE DRAWN	BY	CHKD		APVD									
A	26172	10/20/06	RS	TJK		12/16/08	RS	RS 12/16/08		TJK 1/23/09		SHEET    1                      OF    1							
REV	ECO NUMBER	DATE	BY	APVD		NAME                      PHONO JAX						PART No.		REV					
REVISIONS					DO NOT SCALE DRAWING					FRONT PANEL MOUNT, RoHS						3501FPX		C	

SolidWorks CAD File



# Mouser Electronics

Authorized Distributor

Click to View Pricing, Inventory, Delivery & Lifecycle Information:

Switchcraft:

3501FPX