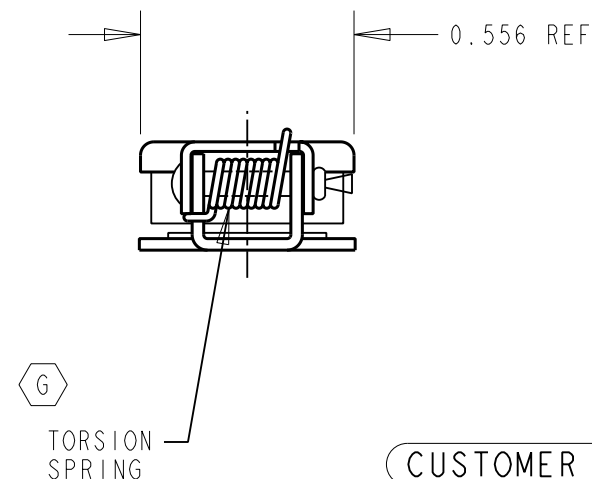
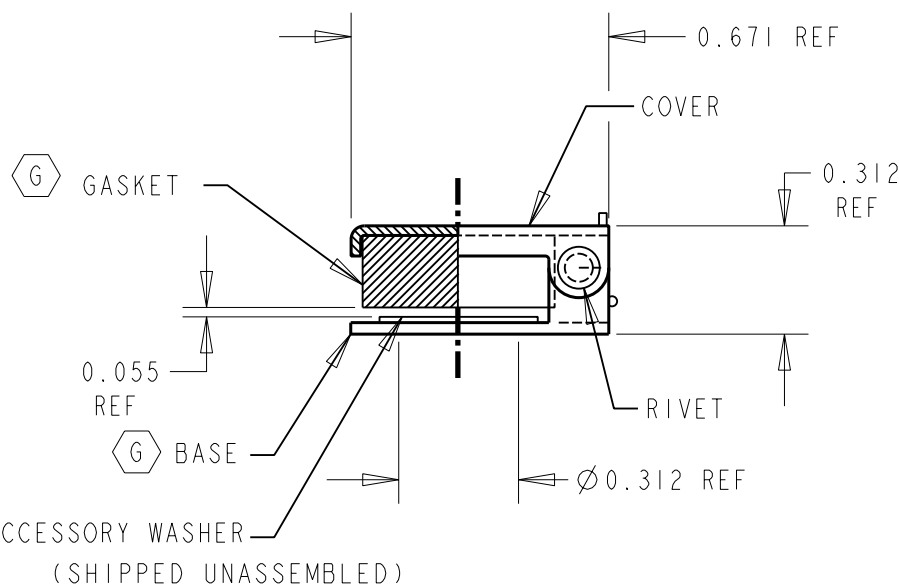


# NOTES:

- COVER & BASE - STEEL  
-FINISH - MIL-F-14072 (SIG.-C)  
-BASIC FINISH#P-211 TYPE EXPOSURE 1  
-FINAL FINISH PER TT-E-529 ENAMEL  
SYNTHETIC SEMI-GLOSS BLACK PER -AI
- GASKET - SYNTHETIC RUBBER
- TORSION SPRING - STAINLESS STEEL
- RIVET - STAINLESS STEEL
- RIVET WASHER - BRASS.
- ACCESSORY WASHER - STEEL, NICKEL PLATE



CUSTOMER DRAWING

★ STAR SYMBOL DENOTES CRITICAL DIMENSION

THIS DRAWING DESCRIBES A DESIGN CONSIDERED PROPRIETARY IN NATURE, DEVELOPED AND MANUFACTURED BY SWITCHCRAFT INC. AND IS RELEASED ON A CONFIDENTIAL BASIS FOR IDENTIFICATION PURPOSES ONLY.

UNLESS OTHERWISE SPECIFIED

- ALL DIMENSIONS IN INCHES  
-TWO PLACE DECIMALS  $\pm 0.01$   
-THREE PLACE DECIMALS  $\pm 0.005$   
-ANGLES  $\pm 1^\circ$   
-ALL DIA. CONCENTRIC WITHIN 0.005 T.I.R.

- FEATURES ON THE SAME CENTERLINE MUST BE ALIGNED WITHIN  $\pm 0.002$

- REMOVE ALL BURRS

DO NOT SCALE DRAWING

SIZE	WIDTH	MULT	LBS/M	TEMPER
FINISH	MATERIAL			
SPEC No.	SPEC No.			
FIRST USED ON		SCALE		
		2 : 1		
DATE DRAWN	BY	CHKD	APVD	<b>Switchcraft®</b>
3-21-88	EB	JF 8-3-90	DLV 8-3-90	
NAME			PART No.	REV
TIP JAX COVER ASS'Y BLACK			2C1072	G

REV	ECO NUMBER	DATE	BY	APVD
G	23140	4-20-00	DA	DK
F	ECO #22434	10-29-98	RC	JF
REVISIONS				

Pro/Engineer CAD File

A

# Mouser Electronics

Authorized Distributor

Click to View Pricing, Inventory, Delivery & Lifecycle Information:

[Switchcraft:](#)

[2C1072](#)