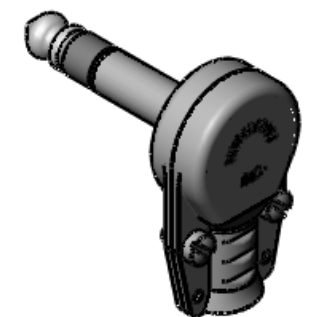
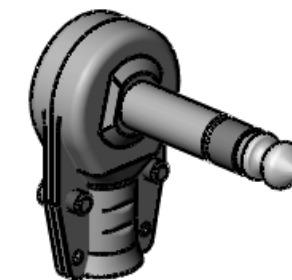


SECTION A-A  
SCALE 3 : 1



CUSTOMER DRAWING

NOTES:

1. MATERIALS:  
TIP ROD AND SLEEVE: BRASS, BRIGHT NICKEL PLATED  
TERMINALS: BRASS, ELECTRO-TINNED  
HANDLE AND COVER: NICKEL PLATED STEEL
2. HANDLE COVER AND SCREWS SHIPPED UNASSEMBLED.
3. THIS PRODUCT IS RoHS COMPLIANT.

					<div>UNLESS OTHERWISE SPECIFIED</div> <div>1. ALL DIMENSIONS IN INCHES</div> <div>- TWO PLACE DECIMALS    ±0.02</div> <div>- THREE PLACE DECIMALS    ±0.005</div>	THIS DRAWING DESCRIBES A DESIGN CONSIDERED PROPRIETARY IN NATURE, DEVELOPED AND MANUFACTURED BY SWITCHCRAFT INC. AND IS RELEASED ON A CONFIDENTIAL BASIS FOR IDENTIFICATION PURPOSES ONLY.										
						SIZE	WIDTH		MULT		LBS/M		TEMPER			
						FINISH SPEC No.						MATERIAL SPEC No.				
						FIRST USED ON				SCALE 2:1		<div>Switchcraft®</div> <div>SHEET 1 OF 1</div>				
						DATE DRAWN 02/24/12	BY BL	CHKD TJK 02/24/12	APVD TJK 02/24/12							
A	25295	02/21/06	BL	TJK	<div>DO NOT SCALE DRAWING</div>	NAME 3 CONDUCTOR FLAT PLUG, RoHS						PART No. 238X				REV A
REV	ECO NUMBER	DATE	BY	APVD												
REVISIONS																

# Mouser Electronics

Authorized Distributor

Click to View Pricing, Inventory, Delivery & Lifecycle Information:

[Switchcraft:](#)

[238X](#)