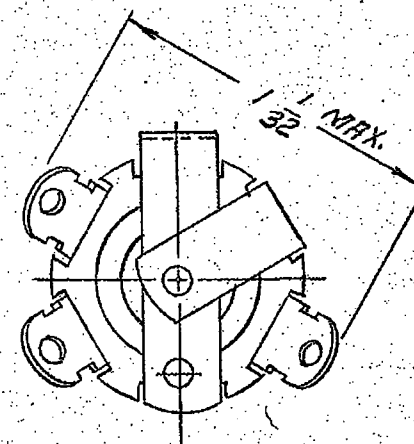
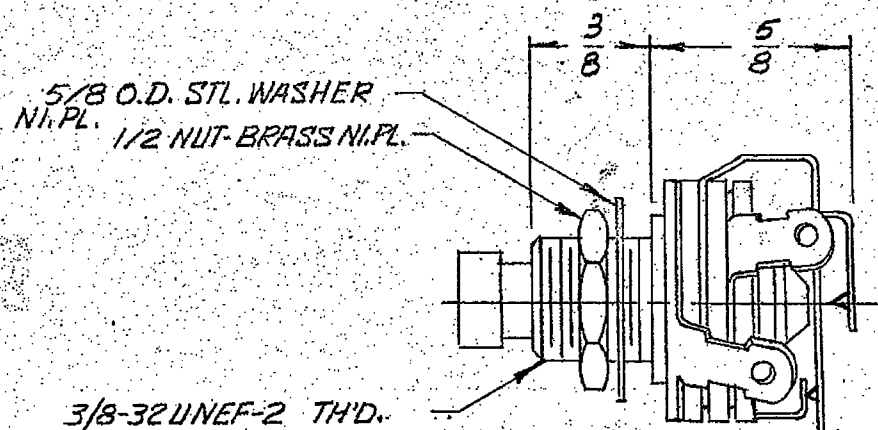


AR

203



SCHEMATIC

**MATERIALS:**

1. BUSHING-BRASS-NI. PL.
2. SPRINGS-NI. SILVER-SPG. TEMP.
3. SPACERS-PAPER BASE PHENOLIC
4. PUSHBUTTON-BLACK

CUSTOMER DRAWING

DATE	5-6-64	THIS DRAWING DESCRIBES A DESIGN CONSIDERED PROPRIETARY IN NATURE, DEVELOPED AND MANUFACTURED BY SWITCHCRAFT, INC., AND IS RELEASED ON A CONFIDENTIAL BASIS FOR IDENTIFICATION PURPOSE ONLY.	
BY	KT	UNLESS OTHERWISE SPECIFIED:	DRAWN BY
REVISION	1	1 - DECIMAL DIMENSIONS ± .005	CHEKED BY
1	REDRAWN	2 - FRACTIONAL DIMENSIONS ± 1/64	DATE
2	ECO 14111	3 - ANGLES ± 1/2°	5-17-64
3	ECO 20627	4 - ALL DIA'S CONCENTRIC WITHIN .005 T.I.R.	APPROVED BY
4		5 - ALL DIMENSIONS IN INCHES	LG
5		6 - FOR THREADS USE UNIFIED PLUG AND RING GAGES ONLY.	DATE
6		7 - REMOVE ALL BURS.	5-19-64
7		8 - PART TO BE FABRICATED AS SPECIFIED. MAKE NO DIMENSIONAL ALLOWANCES FOR APPLIED FINISHES, I.E., PLATING, PAINTING, ETC.	SCALE
8		9 - HOLES OR SAME CENTERLINE MUST BE ALIGNED WITHIN ± .002	2:1
9		DO NOT SCALE DRAWING	FIRST USED ON
10			NAME
11			NON-LOCKING
12			LITTEL SWITCH
13			PART NO.
14			203
15			ISSUE
16			A
17			SHEET
18			OF

101, 105, 112, 146.

# Mouser Electronics

Authorized Distributor

Click to View Pricing, Inventory, Delivery & Lifecycle Information:

[Switchcraft:](#)

[203](#)