

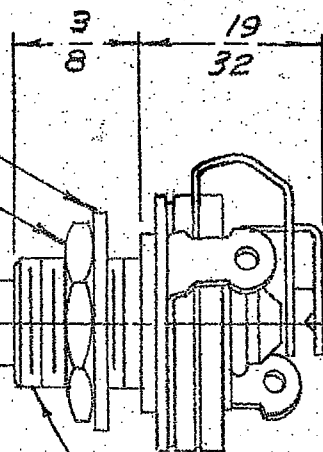
AR

201

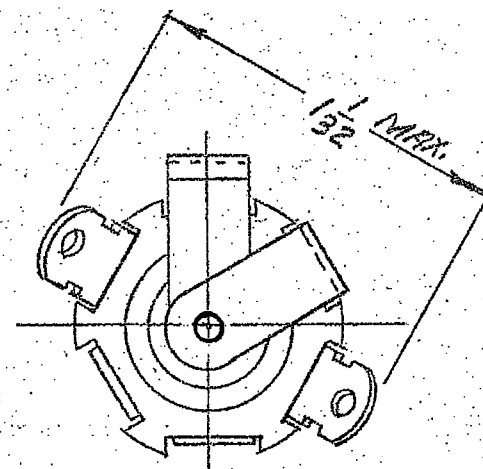
5/8 O.D. STL. WASHER
NI. PL.

1/2 NUT BRASS
PL.

PUSH BUTTON
(BLACK)



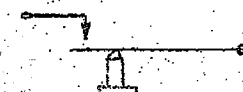
3/8-32 UNEF-2A TH'D.



MATERIALS:

1. BUSHING - BRASS - NI. PL.
2. SPRINGS - NI. SIL. - SPG. TEMP.
3. SPACERS - PAPER BASE PHENOLIC

CUSTOMER DRAWING



SCHEMATIC

REV	DATE	BY	REVISION
1	5-5-62	1/1	REWORK
2	5-5-62	1/1	ECO 14111
3	5-5-62	1/1	ECO 20627

THIS DRAWING DESCRIBES A DESIGN CONSIDERED PROPRIETARY IN NATURE, DEVELOPED AND MANUFACTURED BY SWITCHBOARD, INC., AND IS RELEASED ON A CONFIDENTIAL BASIS FOR IDENTIFICATION PURPOSE ONLY.

UNLESS OTHERWISE SPECIFIED:

1. DECIMAL DIMENSIONS $\pm .001$
2. FRACTIONAL DIMENSIONS $\pm 1/64$
3. ANGLES $\pm 1/2^\circ$
4. ALL DIA'S CONCENTRIC WITHIN .005 T.I.R.
5. ALL DIMENSIONS IN INCHES
6. FOR THREADS USE UNIFIED PLUG AND RING GAGES ONLY.
7. REMOVE ALL BURRS.
8. PART TO BE FABRICATED AS SPECIFIED. MAKE NO DIMENSIONAL ALLOWANCES FOR APPLIED FINISHES, I.E., PLATING, PAINTING, ETC.
9. HOLES ON SAME CENTERLINE MUST BE ALIGNED WITHIN .005

DO NOT SCALE DRAWING.

DRAWN BY R.L.S.	DATE 5-5-64
CHECKED BY MW	DATE 2-4-88
APPROVED BY L.G.	DATE 5-19-64
SCALE 2:1	
FIRST USED ON	

FINISH	
PER FINISH SPEC. NO.	
MATERIAL	
PER MAT. SPEC. NO.	

NAME
**NON-LOCKING
LITTEL SWITCH**

PART NO. 201	ISSUE B
SHEET OF	

101, 105, 112, 146.

Mouser Electronics

Authorized Distributor

Click to View Pricing, Inventory, Delivery & Lifecycle Information:

[Switchcraft:](#)

[201](#)